



16" REVERSIBLE WINDOW FAN  
 16" (40,64 cm)  
 Model 2EJR6G/9155G

**READ AND SAVE THESE INSTRUCTIONS**

READ CAREFULLY BEFORE ATTEMPTING TO ASSEMBLE, INSTALL, OPERATE OR MAINTAIN THE PRODUCT DESCRIBED. PROTECT YOURSELF AND OTHERS BY OBSERVING ALL SAFETY INFORMATION. FAILURE TO COMPLY WITH INSTRUCTIONS COULD RESULT IN PERSONAL INJURY AND/OR PROPERTY DAMAGE! RETAIN INSTRUCTIONS FOR FUTURE REFERENCE.

**Description**

The Air King® window fan features three intake and three exhaust speeds and fits windows 26 1/2" (67,3 cm) to 34 1/2" (87,6 cm) wide to 22" (55,9 cm) high. The adjustable side panels are designed to accommodate fan mounting either inside or outside interior window trim. The 16" (40,64 cm), 3-paddle fan blade is driven by a permanently prelubricated motor, 6 foot (1,8 m), 18/3 cord set.

**Specifications**

Motor..... 120V, 60 Hz  
 Blade size ..... 16" (40,6 cm)  
 Speeds..... 3 intake, 3 exhaust  
 Control ..... Rotary switch  
 Approvals..... ETL Listed. Close mesh fan guard meets OSHA requirements.

MODEL	2ERJ6G/9155G		
SPEED	HIGH	MED	LOW
CFM	2470	1700	1360
M <sup>3</sup> /s	1.17	0.80	0.64
RPM	1480	1110	820
Amps	0.80	0.63	0.50
Watts	90	76	61
dB A	64	50	47

**GENERAL SAFETY INFORMATION**

**When using electrical appliances, basic precautions should always be followed to reduce the risk of fire, electric shock and injury to person, including the following:**

1. Read all instructions before using Fan.
2. Make certain that the room is equipped with a working smoke detector.
3. Use this Fan only as described in this manual. Any other use not recommended by the manufacturer may cause fire, electrical shock, or injury to persons.
4. To reduce the risk of personal injury and electric shock, the Fan should not be played with or placed where small children can reach it.

**WARNING: DO NOT DEPEND UPON THE ON-OFF SWITCH AS THE SOLE MEANS OF DISCONNECTING POWER WHEN INSTALLING OR SERVICING THE FAN. ALWAYS UNPLUG THE POWER CORD.**

5. Unplug power cord before installing, servicing, or moving the Fan.
6. This Fan must **NOT** be used in potentially dangerous locations such as flammable, explosive, chemical-laden or wet atmospheres where gasoline, paint or flammable liquids are used or stored.
7. The power cord is equipped with a three-prong grounded plug that must be inserted into a matching receptacle. Under no circumstances must the grounding prong be cut off the plug. Where a two-prong wall receptacle is encountered, it must be replaced with a properly grounded three-prong receptacle installed in accordance with the National Electrical Code (NEC) and all applicable local codes and ordinances. This work must be done only by a qualified electrician, using copper wire only.

**WARNING: USE OF A THREE-PRONG TO TWO-PRONG ADAPTER IS NOT RECOMMENDED. IMPROPER CONNECTION MAY CREATE THE RISK OF ELECTROCUTION. USE OF SUCH ADAPTERS IS NOT PERMITTED IN CANADA.**

**WARNING: THIS PLUG IS A SAFETY FEATURE. TO REDUCE THE RISK OF FIRE, ELECTRIC SHOCK AND PERSONAL INJURY, DO NOT REMOVE, REPLACE, REPAIR OR TAMPER WITH THE ORIGINALLY SUPPLIED PLUG. IF THE FAN DOES NOT FUNCTION PROPERLY, IT MAY BE DUE TO THE SAFETY DEVICE INCORPORATED IN THIS PLUG.**

8. This Fan is rated for use as a Window Fan, however, we recommend that during rain, this Fan be removed from the window.
9. Where possible, avoid the use of extension cords. If they must be used, minimize the risk of overheating by ensuring that they are UL listed. **NEVER** use a single extension cord to operate more than one Fan.
10. **DO NOT** operate any Fan with a damaged cord or plug or after the Fan malfunctions, has been dropped or damaged in any manner. Return Fan to authorized service facility for examination, electrical or mechanical adjustment or repair.
11. **DO NOT** insert or allow fingers or foreign objects to enter any ventilation or exhaust opening as it may cause an electric shock or fire, or damage the Fan. **DO NOT** block or tamper with the Fan in any manner while it is in operation.
12. This Fan is not intended for use in wet or damp locations. Never locate a Fan where it may fall into a bathtub or other water container.
13. **DO NOT** use Fan outdoors.
14. This Fan is not suitable for use in agricultural facilities including areas where livestock, poultry or other animals are confined. Please refer to National Electric Code (NEC) Article 547-7 (2008), or applicable state or local codes or standards relating to electrical requirements for Agricultural Buildings. **THIS FAN DOES NOT MEET THE REQUIREMENTS OF NEC ARTICLE 547-7 (2008).**
15. This Fan is not suitable for use in hazardous locations. Please refer to National Electric Code (NEC) Article 500 or applicable state or local codes or standards relating to electrical requirements for Hazardous locations. **THIS FAN DOES NOT MEET THE REQUIREMENTS OF NEC ARTICLE 500 (2008).**

**WARNING: REDUCE THE RISK OF FIRE OR ELECTRIC SHOCK – DO NOT USE THIS FAN WITH ANY SOLID STATE SPEED CONTROL DEVICES.**

**SAVE THESE INSTRUCTIONS**

**Installation**

The large number of window styles and types makes it impossible to describe one universal installation procedure. The methods outlined below are recommended as being well-suited for most common styles of double-hung windows. Whichever method you choose should allow the window to be closed easily for security and protection of home furnishings against the weather. Refer to illustrations while following Methods A or B below.

**METHOD A: (Outside of Trim)**

**Tools Required:** Screwdrivers  
**Hardware Provided:** Four - #8 x 3/4" slotted head screws

1. Loosen screws "B" and extend side panels to clear the outer edge of trim on each side of window.

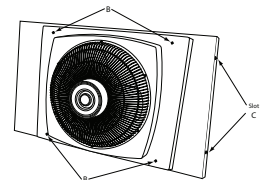


Figure 1

2. Rest fan on window sill with flange on side panels over trim. Push in side panels tight against outer edge of trim.

3. With side panel in position, mark screw locations at top of slot "C" and drive in the 4 wood screws "A" (provided) until tight.

4. Tighten 4 screws "B" in fan housing to complete installation.

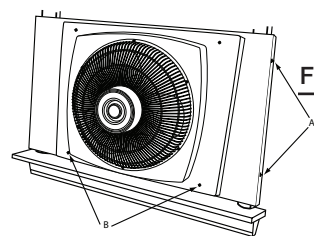


Figure 2

**METHOD B: (Inside of Trim)**

**Tools Required:** Screwdrivers  
**Hardware Provided:** Four - #8 x 3/4" slotted head screws

1. Mark screw locations on inside edges of window trim using enclosed template as shown in illustration.
2. Drive 4 screws "A" into trim. DO NOT TIGHTEN FLUSH. Leave 1/8" (3.2 mm) space between screw heads and window trim.

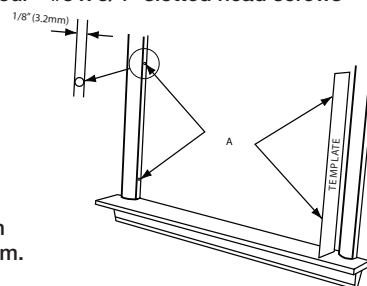


Figure 3

3. Loosen 4 screws "B" and extend panels on each side of housing until the fan fits snugly between right and left window trim.

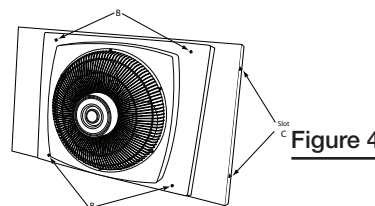


Figure 4

4. Mount fan in window by engaging slots "C" with screws "A" on inside edge of trim. Lower fan on screws "A" until it rests on window sill or sash moulding.

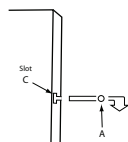


Figure 5

5. Tighten screw "B" on housing to secure fan in position.

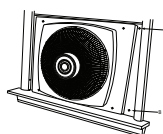


Figure 6

**Operation**

This Air King® window fan is powered by a durable electrically-reversible 3 speed split capacitor motor. (Hi, Medium, and Low speed settings are available for both intake and exhaust mode.) The motor control switch is conveniently located on the motor cover. Adjust knob to direction and speed desired.

**MAINTENANCE**

**WARNING: ALWAYS UNPLUG THE CORD BEFORE SERVICING.**  
**CLEANING:** Use a soft cloth and a mild soap solution such as liquid dish washing detergent.  
**NEVER IMMERSE ELECTRICAL PARTS IN WATER.**  
**CAUTION:** Do not use gasoline, benzene, thinner, harsh cleaners, etc. which will damage the fan.  
 Dry all parts with a soft cloth completely before reconnecting to power supply.  
**STORAGE:** When not in use, keep unit in a clean dry place.  
**MOTOR IS PERMANENTLY LUBRICATED.**

**LIMITED WARRANTY**

**WHAT THIS WARRANTY COVERS:** This product is warranted against defects in workmanship and/or materials.

**HOW LONG THIS WARRANTY LASTS:** This warranty extends only to the original purchaser of the product and lasts for one (1) year from the date of original purchase or until the original purchaser of the product sells or transfers the product, whichever first occurs.

**WHAT AIR KING WILL DO:** During the warranty period, Air King will, at its sole option, repair or replace any part or parts that prove to be defective or replace the whole product with the same or comparable model.

**WHAT THIS WARRANTY DOES NOT COVER:** This warranty does not apply if the product was damaged or failed because of accident, improper handling or operation, shipping damage, abuse, misuse, unauthorized repairs made or attempted. This warranty does not cover shipping costs for the return of products to Air King for repair or replacement. Air King will pay return shipping charges from Air King following warranty repairs or replacement.

**ANY AND ALL WARRANTIES, EXPRESSED OR IMPLIED (INCLUDING, WITHOUT LIMITATION, ANY IMPLIED WARRANTY OF MERCHANTABILITY), LAST ONE YEAR FROM THE DATE OF ORIGINAL PURCHASE OR UNTIL THE ORIGINAL PURCHASER OF THE PRODUCT SELLS OR TRANSFERS THE PRODUCT, WHICHEVER FIRST OCCURS AND IN NO EVENT SHALL AIR KING'S LIABILITY UNDER ANY EXPRESS OR IMPLIED WARRANTY INCLUDE (I) INCIDENTAL OR CONSEQUENTIAL DAMAGES FROM ANY CAUSE WHATSOEVER, OR (II) REPLACEMENT OR REPAIR OF ANY HOUSE FUSES, CIRCUIT BREAKERS OR RECEPTACLES. NOTWITHSTANDING ANYTHING TO THE CONTRARY, IN NO EVENT SHALL AIR KING'S LIABILITY UNDER ANY EXPRESS OR IMPLIED WARRANTY EXCEED THE PURCHASE PRICE OF THE PRODUCT AND ANY SUCH LIABILITY SHALL TERMINATE UPON THE EXPIRATION OF THE WARRANTY PERIOD.**

Some states and provinces do not allow limitations on how long an implied warranty lasts, or the exclusion or limitation of incidental or consequential damages, so these exclusions or limitations may not apply to you. This warranty gives you specific legal rights. You may also have other rights which vary from state to state and province to province.

Proof of purchase is required before a warranty claim will be accepted.

**GARANTÍA LIMITADA**

**QUÉ CUBRE ESTA GARANTÍA:** Este producto está garantizado contra defectos de mano de obra y/o materiales.

**CUÁNTO DURA ESTA GARANTÍA:** Esta garantía se extiende únicamente al comprador original del producto y dura un (1) año a partir de la fecha original de compra o hasta que el comprador original del producto venda o transfiera el producto, cualesquiera de ambas que ocurriera en primer lugar.

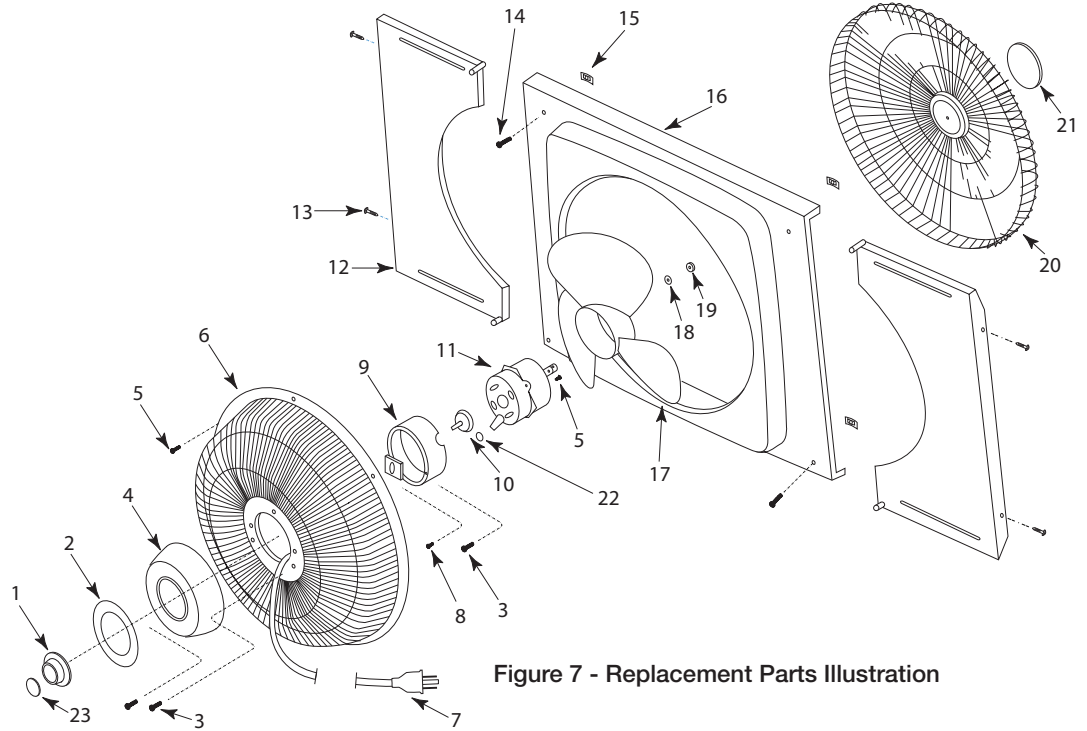
**QUÉ HARÁ AIR KING:** Durante el período de garantía, Air King, a opción propia, reparará o reemplazará cualquier parte o partes que demuestren ser defectuosas o reemplazará el producto completo por el mismo modelo u otro comparable.

**QUÉ NO CUBRE ESTA GARANTÍA:** Esta garantía no tiene validez si el producto fue dañado o falló debido a un accidente, manipulación u operación inadecuadas, daño en el envío, abuso, mal uso, reparaciones no autorizadas hechas o el intento de hacerlas. Esta garantía no cubre los costos de envío para la devolución de productos a Air King para su reparación o reemplazo. Air King abonará los cargos de envío de devolución a Air King con posterioridad a las reparaciones o el reemplazo bajo garantía.

**CUALESQUIERA Y TODAS LAS GARANTÍAS, EXPLÍCITAS O IMPLÍCITAS (INCLUYENDO, SIN LIMITACIÓN, CUALESQUIERA GARANTÍA IMPLÍCITA DE COMERCIABILIDAD), DURAN UN AÑO A PARTIR DE LA FECHA ORIGINAL DE COMPRA O HASTA QUE EL COMPRADOR ORIGINAL DEL PRODUCTO VENDA O TRANSFIERA EL PRODUCTO, CUALESQUIERA DE AMBAS QUE OCURRIERA EN PRIMER LUGAR Y EN NINGÚN CASO LA RESPONSABILIDAD DE AIR KING BAJO CUALQUIER GARANTÍA EXPLÍCITA O IMPLÍCITA INCLUIRÁ (I) DAÑOS INCIDENTALES O POR CONSECUENCIA POR CUALQUIER CAUSA QUE FUERE, O (II) REEMPLAZO O REPARACIÓN DE CUALESQUIERA FUSIBLES HOGAREÑOS, CORTA-CIRCUITOS O TOMACORRIENTES. INDEPENDIENTEMENTE DE CUALQUIER DECLARACIÓN CONTRARIA, EN NINGÚN CASO LA RESPONSABILIDAD DE AIR KING BAJO CUALQUIER GARANTÍA EXPLÍCITA O IMPLÍCITA PODRÁ EXCEDER EL PRECIO DE COMPRA DEL PRODUCTO Y DICHA RESPONSABILIDAD TERMINARÁ AL VENCIMIENTO DEL PERÍODO DE GARANTÍA.**

Algunos estados y provincias no permiten limitaciones sobre la duración de una garantía implícita, o sobre la exclusión o limitación de los daños incidentales o por consecuencia, por lo tanto dichas exclusiones o limitaciones podrían no aplicarse en su caso. Esta garantía le otorga a usted derechos legales específicos. Usted también podría tener otros derechos que varían de estado en estado y de provincia en provincia.

Se requiere prueba de compra antes que se acepte un reclamo bajo garantía.



**Figure 7 - Replacement Parts Illustration**

**Replacement Parts List**

REF NO.	DESCRIPTION	PART NO.	QTY.	REF NO.	DESCRIPTION	PART NO.	QTY.
1	Knob	2010115	1	13	Wood Screw, #8 x 3/4"	*	4
2	Switch plate	02065209	1	14	Screw, #10 x 3/4"	2090005	4
3	Screw, #8 x 5/8" HWH	*	9	15	Speed nut, tinnerman	2090006	4
4	Motor Cover	2010609	1	16	Body	2011805	1
5	Screw, #6 x 5/8"	*	6	17	Blade	2011227	1
6	Inside guard	02096025W	1	18	Lockwasher, 1/4" ext. tooth	*	1
7	Cordset	02050054FB	1	19	Nut, 1/4 -20 LH	2090124	1
8	Screw, #8 x 3/8" HWH	2091169	1	20	Outside guard	2011215	1
9	Motor cover brkt.	2010703	1	21	Name plate	02065508G	1
10	Switch	2055052	1	22	Lockwasher, #8 ext. tooth	*	1
11	Motor	02030116	1	23	Knob insert	02070027	1
12	Side panel	2011815	2				

(\*) Standard hardware item, available locally