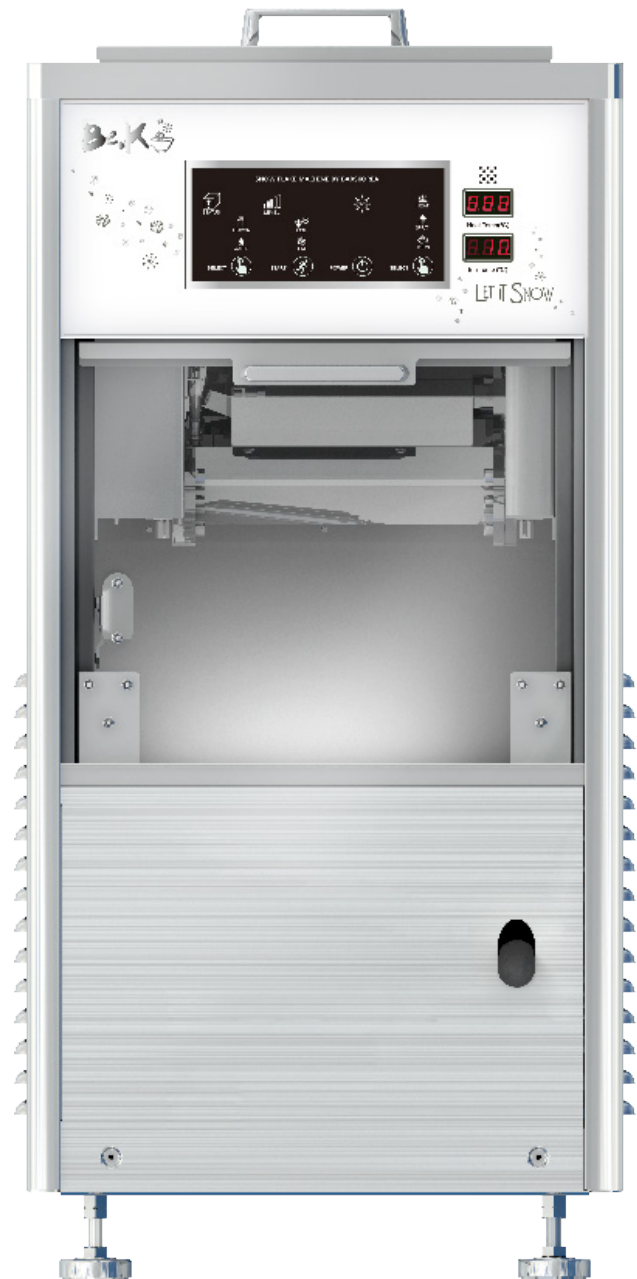


SUPER SNOW

USER'S GUIDE & INSTALLATION INSTRUCTIONS

SUF-200NW-CK



Safety Information

This product is SINGLE PHASE ONLY.
Do NOT modify to three phase.

Before using your new BARSKOREA SUPER SNOW Machine, please read this manual thoroughly to ensure that you know how to operate the features and functions that your new appliance offers safely and efficiently.

This product is qualify for international uses.

If you have any question, contact us
at 82-32-581-3466 or email us at
barskorea@hanmail.net

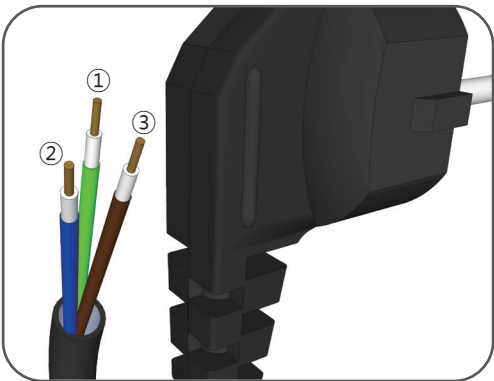
ATTENTION! Before install
'Super Snow Machine'

※ This product is **SINGLE PHASE ONLY**.
Do NOT modify to three phase.

TECHNICAL SPECS

Model	SUF-200NW-CK
Ice type	Snow shaved/flavored snow ice
Cooling Type	Air Cooling
Hydraulic Pressure	0.05~78 Mpa (0.5~8 Kgf/cm2)
Weight	65Kg
Capacity/Day	125kg/day
Bin Capacity	6.0kg (41bw/200g) - 80min
Dimension	392 x 610 x 811 mm
100-120V Power Specifications	100-120V/60Hz, Single phase
	0.9kw/9Amps
220V Power Specifications	220V/60Hz, Single phase
	0.65kw/4.5Amps
230-240V Power Specifications	230-240V/60Hz, Single phase
	0.65kw/4.5Amps

[To modify to different code]



The power code is form in three different wires. The wires represent:

- 1) Green colored wire: GROUND
- 2) Blue colored wire: (A)
- 3) Brown colored wire: (N)

- To replace into different code, make sure ground wire connect to the ground part.

CONTENTS

GENERAL INFO

The List of part	4-5
about SUPER SNOW	6
Warning and Safety	7-15
Warning & Safety	7
Power Related Precaution	8
Precaution	9-13
Cleaning Precaution	14
Other Precaution	15

INSTALLATION METHOD

Installation	16-23
Grounding in horizontal installaion	17-18
Connecting the water supply hose	19-21
How to connect/disconnect the	22-23
Stainless vat	

OPERATING SUPER SNOW

Using related method	24-25
Basic function of button	26-27
How to produce snow flakes	28-29
Cleaning method	30-34

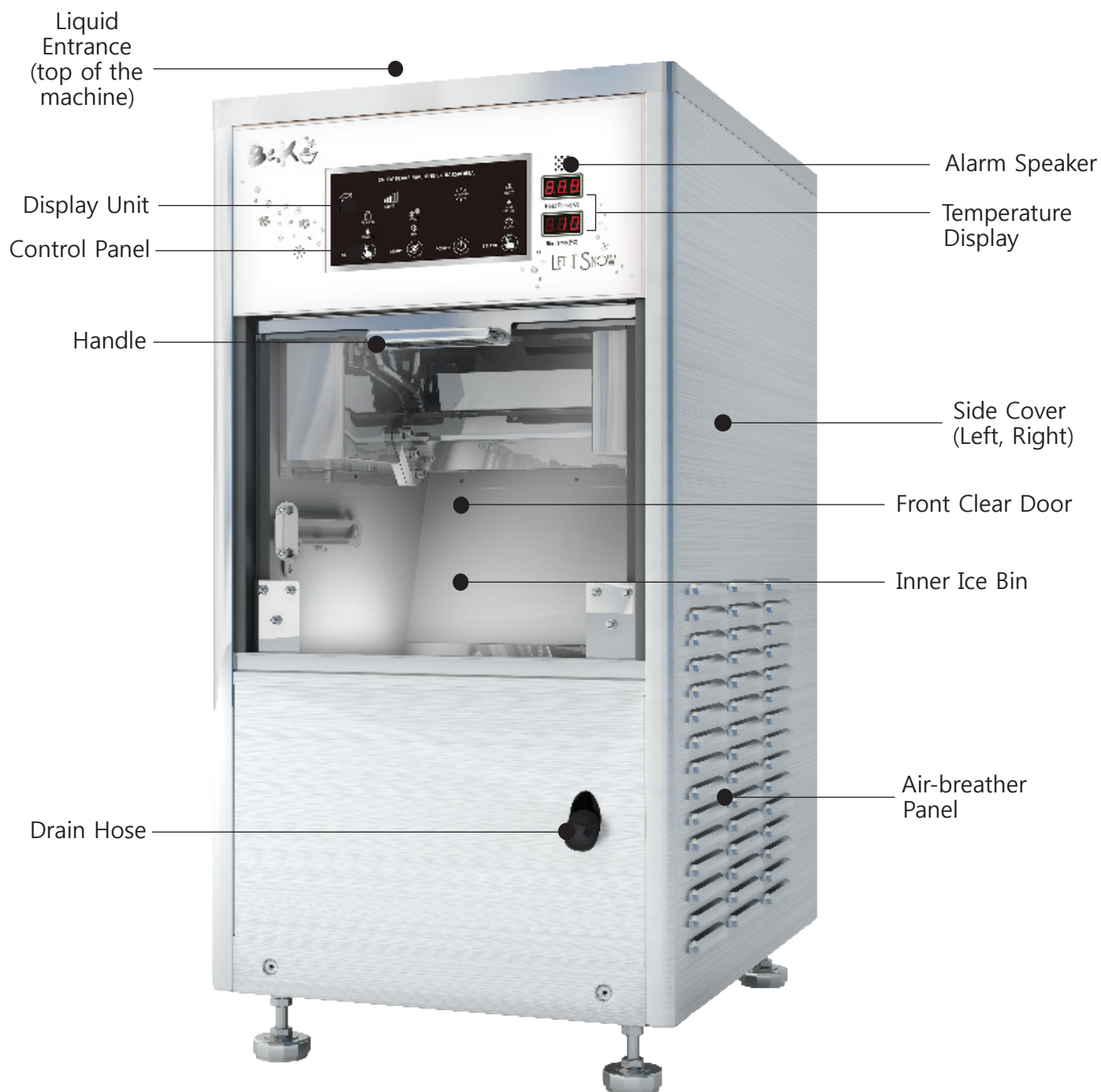
OTHER INFO

Troubleshooting	35-37
Disposal method	38
Specification	39

THE LIST OF PART

Use this page to become more familiar with the parts and features of the Super Snow Machine.

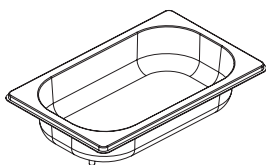
SIDE VIEW



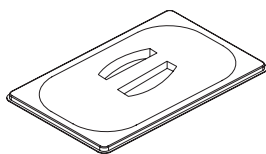
BACK VIEW



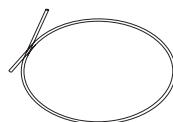
Accessories



Stainless Vat



Pan Cover



Silicone Hose



Fuse



User Manual

ABOUT SUPER SNOW...

- * It produces the snowflake by rotation of the cooling drum.
- * It produces the any liquid or beverages to produce the fine texture of the snowflake.
- * Able to see the freezing of the drum during the operation; easy to clean after use.

CLEANING PRECAUTIONS...

- * If using the machine in high humidity area for long period, it causes the bacteria grows inside of the machine and result of serious health problem.
- * After using the machine, please clean thoroughly and spray with sanitizer to prevent the bacteria and mold.
- * Service applies for 1yr warranty from the date of purchase. However, additional cost might apply. Please read the 'Warranty of the product' carefully before use.

CHECK

SAFETY CHECK POINT

SAFETY CHECK REQUIRE

Does your Super Snow Machine have these conditions?

- Power cord and/or plug are extremely hot or damaged.
- Electric shock when touching the machine.
- Burning smell or smoke emitting from the machine during operation.
- Random machine does not work, even power is on
- Water continuously leaks from the machine.
- The drum does not rotate.
- Machine keep wobbling even on flat surfaces.
- Machine shut down when water supply is on.

Stop use the Super Snow Machine with above circumstances

- Unplug your Super Snow before making any repairs
- Call for service. Service should be performed by a qualified technician.

✂ Please do not attempt to repair the machine.

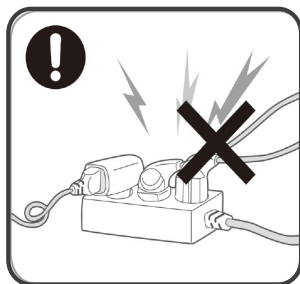
IMPORTANT SAFETY SYMBOLS and PRECAUTIONS

⚠ WARNING Hazards or unsafe practices that may result in severe personal injury or death.

⚠ CAUTION Hazards or unsafe practices that may result in minor personal injury or property damage.

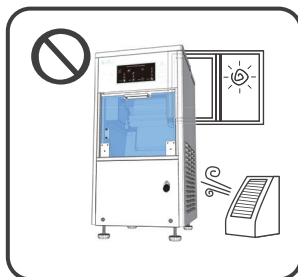
- ⚠ Follow directions carefully.
- ⊘ Do NOT attempt.
- ⚡ Make sure the appliance is grounded to prevent electric shock.
- 🔌 Unplug the power plug from the wall socket.
- ⊘ Do NOT disassemble.

⚠ Please use a 220V/60Hz, 30A or higher rated power supply for the machine. Do not over extend the power cord.



- ▶ Using a power strip with other devices may cause electric shock and/or fire.
- ▶ Using an electrical transformer may cause electric shock and/or fire if not properly installed.
- ▶ Using a different voltage/frequency may cause electric shock and/or fire.

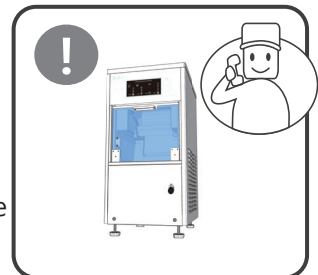
⚠ Do not install the machine close to: heat sources, moist, oily, dusty areas, direct sunlight, water, or leaking gas areas.



- ▶ Could cause of electrical shock, fire, mechanical problem, and personal injury

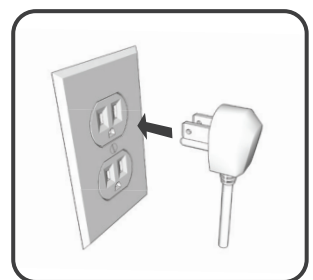
⚠ Please ask a technician to install the Super Snow Machine.

- ▶ Improper installation may cause electric shock, mechanical problem, explosion, injury, and/or fire.



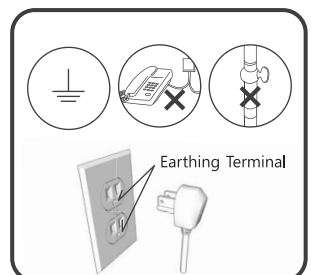
⚠ Please use a grounded outlet.

- ▶ Machine should be connected to earth wired (ground wire) socket directly or to another area to prevent electrical shock from the machine.



⚠ For your safety, be sure to use a ground wire. Please do not ground wire with gas pipe, plastic water pipe, and telephone line.

- ▶ Causes electrical shock, fire, mechanical problem, and explosion.

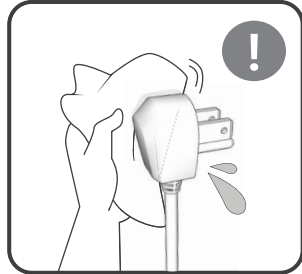


POWER RELATED PRECAUTION



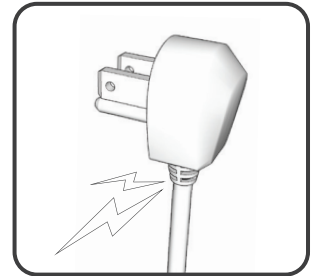
With a dry cloth frequently clean off any accumulating dust, water, etc.

► Improper maintenance may cause electrical shock and/or fire.



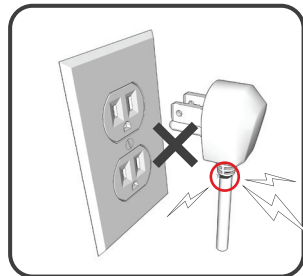
Unplug the power cord from the outlet when not using the machine for prolonged periods of time.

► Improper surge protection may causes electrical shock and/or fire.



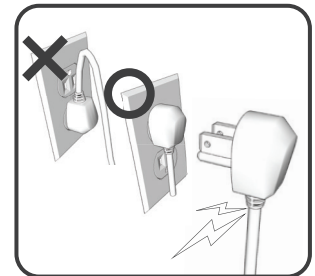
The power cord should fit into the outlet securely. Do not use the power cord if damaged or loosened.

► Improper maintenance may cause electrical shock and/or fire.



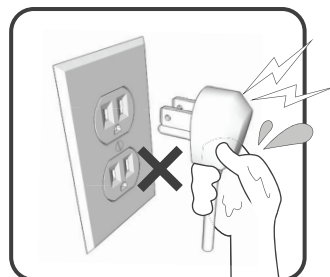
Insert the power cord with the cord flowing in a downward direction.

► Improper installation may causes electrical shock.



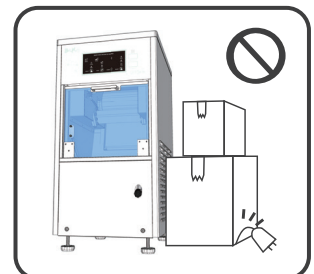
Do not glad a power cord during the switch off

► Please glad a power plug head during the switch off. Otherwise could cause the electrical shock and/or fire.

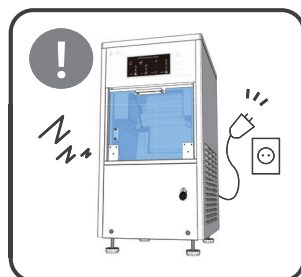


Do not forcefully bend, pull, twist or sinch the cable. Do not place any metal or heavy objects on top of the machine. Do not place the machine close to other objects.

► Improper installation may causes electrical shock.



If the power cord is damaged, please contact customer service for repair.

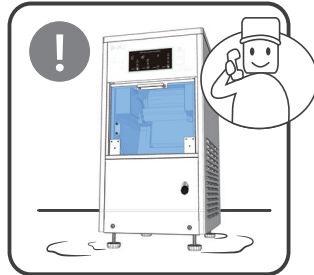


PRECAUTION



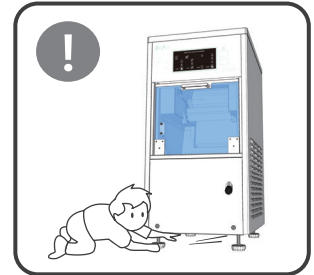
Call service center, for water flooded Super Snow

► Fully dry the machine before use, to prevent electrical shock and/or fire.



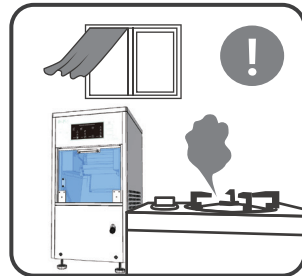
Do not insert metal objects underneath the machine.

► May cause personal injury.



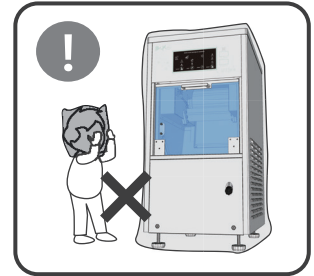
If leaking gas has been detected around the machine, properly circulate and vent the air outside before directly touching the power plug or machine.

► Sparks may ignite a fire and/or explosion.

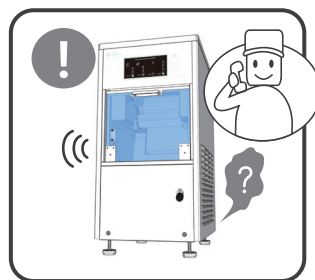


Discard or properly store the plastic cover from the machine.

► May cause suffocation.

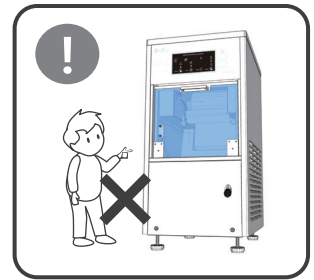


If any foreign noise, odor, or smoke is detected from the machine, immediately power off the machine and call the service center.



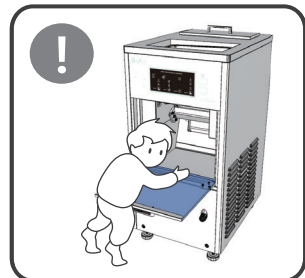
For the safety reasons, make sure children or inexperienced persons do not operate the machine.

► Electrical shock, burn, and/or personal injuries may occur.



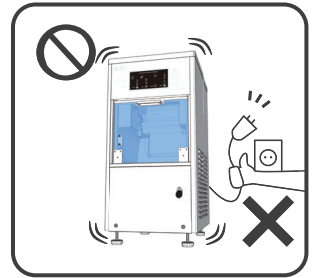
Keep children away from the machine, and properly power down after operation.

► May cause electrical shock, serious injury, and/or death could occur



Do not pull the power plug during operation.

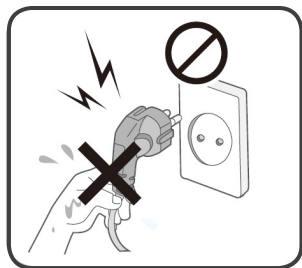
► Spark or electrical shock may occur.





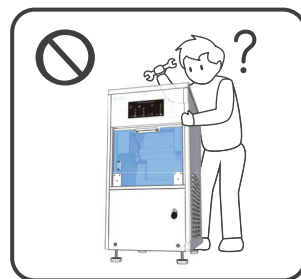
Do not touch the power plug with wet hands.

► May cause electrical shock.



Do not disassemble, repair, or modify.

► Do not repair anything except the fuse. Please contact the service center for repair.



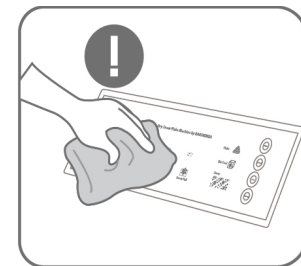
Do not pour hot water into the drum, during operation

► May cause mechanical problems and/or personal injury.



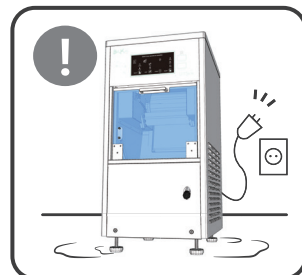
If control panel becomes dirty (soil, food waste, etc), turn off the machine and use a soft cloth with non-toxic sanitizer or soapy water to clean.

► Toxic sanitizers may cause discoloration, deformation, damage and/or rust.



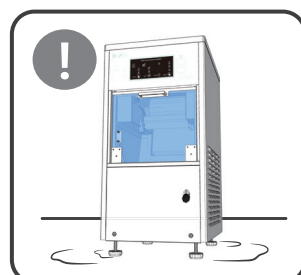
Do NOT use corrosive products: acidic substances, toxic substances, liquid, or foreign objects in the machine

► May damage the machine and cause fire and/or serious injury.
► Please contact the service center if the machine is damaged.



If water leaks during operation, please ensure the water line connections are secure.

► Water leakage may cause of electrical shock and/ or fire.

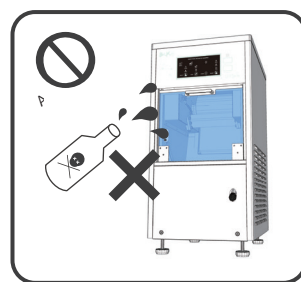


Close the front acrylic door during operation to prevent personal injury.



If the machine is in contact with water or foreign substances, please pull the power plug and contact the service center.

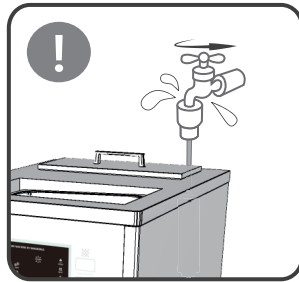
► Electrical shock and/or fire may occur.





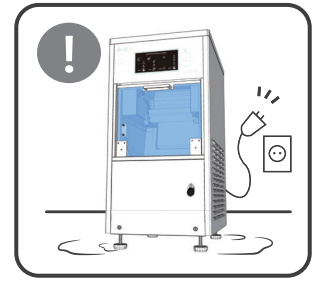
When reinstalling, examine the water hose connection for foreign objects or damage before connecting.

- ▶ Damage to the machine may occur.
- ▶ Water leak may cause electrical shock and/or serious injury.



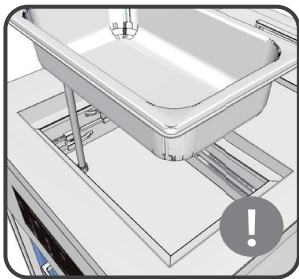
If the water supply hose becomes disconnected from the faucet and becomes flooded with water, please disconnect the power plug

- ▶ Electrical shock and/or personal injury may occur.



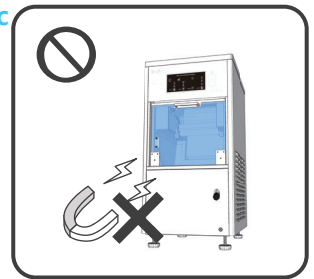
Insert the silicone hose carefully

- ▶ When other substance clog the liquid entrance, can cause of damage of ice, machine damage, and water leak



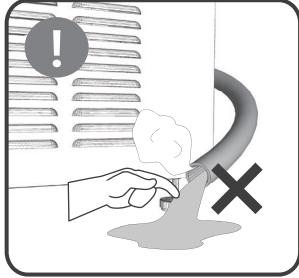
Do not use magnetic products around the machine.

- ▶ May cause mechanical difficulties.



During operation, the coolant may be hot. Do not touch with unprotected hands.

- ▶ May cause skin burn
- ▶ Harmful to health, electrical shock, fire, and/or mechanical problems.



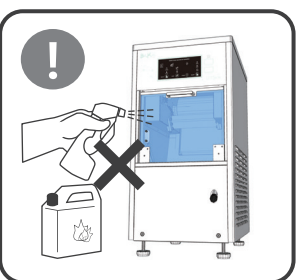
Use edible liquids only in the machine. Do not use harmful or poisonous liquids.

- ▶ Damage of the product and/or injury may occur.



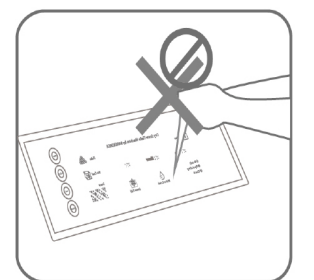
Do not use: pesticides, flammable products, sprays, or temperature sensitive products, etc.

- ▶ May be harmful for your body, or cause electrical shock, fire, and/or mechanical difficulty.



Do not use sharp object on the control panel.

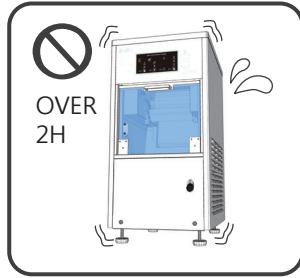
- ▶ May cause electrical shock and/or injury.





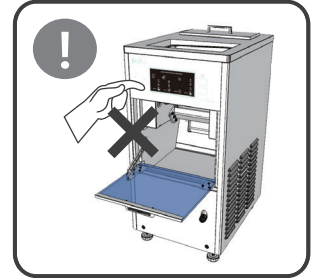
Do NOT overwork the machine.

- More than 2 hours of continuous operation may cause mechanical damage to the machine. Vibrations may happen due to the overwork.



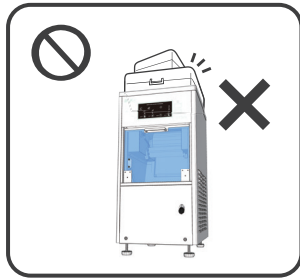
Do NOT operate the machine with opened water bin inside the machine.

- May cause electrical shock and/or injury.



Do NOT step on or heavy objects, and/or flammable materials on top of the machine.

- Electrical shock, fire, and/or mechanical problem may occur.



Do NOT use hot water.

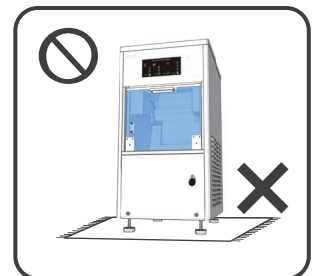
- May cause mechanical problems.



Do NOT use skin product such as oils, creams or lotions on the machine.

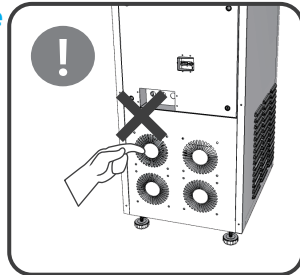


Do NOT clog the ventilation opening with carpet, mats, etc.



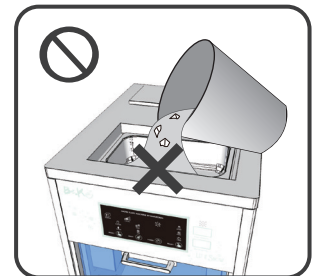
Do NOT touch the compressor while in operation.

- This may cause skin burn due to the high temperature of the compressor.



Do NOT use semi-solid liquid.

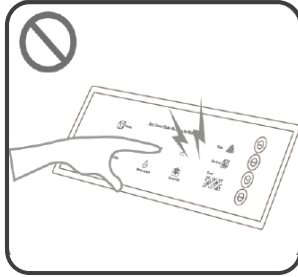
- Solidifying inside the machine may cause leakage.





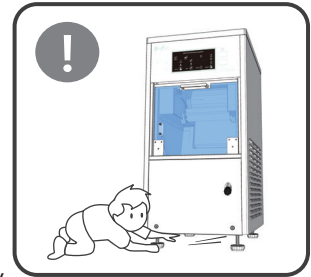
Do NOT operate the machine with wet hands.

► Electrical shock and/or injury may occur.



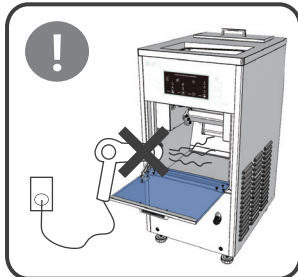
Do NOT touch the inside of the machine with bare hands or metal objects.

► Electrical shock and/or injury may occur.



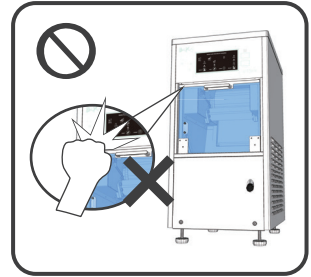
Do NOT use a hair dryer or scented candles inside the bin to dry out or remove the odors.

► Electrical shock and/or fire may occur.



Allow at least 39in (100cm) in front of the Super Snow machine to open the door

► Door section below is lower in the position that could possibility of the injury
► Do not give pressure on the door
- occur the injury do to the broken part

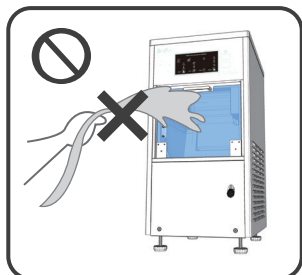


CLEANING PRECAUTION



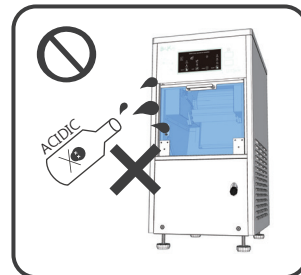
Do NOT spray with water directly.
Do NOT wipe off with benzene, thinner, or alcohol.

► May cause color changes, transform, damage to the machine; electrical shock or fire may occur.



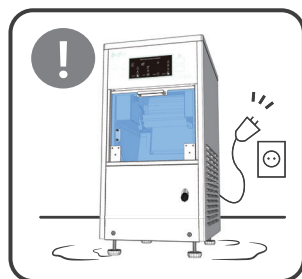
Do NOT use strong acidic cleaners

► May cause corrosion to the machine and mechanical damage.



Disconnect the power plug during a short circuit.

► Electrical shock and/or fire may occur.



OTHER PRECAUTIONS

- ▶ Please maintained the structure attached to Super Snow machine
- ▶ We do not recommended to use the mechanism not recommended by the technician or over work with the speed defrost system (the system to remove the frost).
Could affect or performance of the machine.
- ▶ Recycle the packing materials in eco-friendly way
- ▶ Please manage the machine to ensure the safe use. This product is not intended to be used for: physical, sensory, mental ability, or lack of experience and knowledge to insufficient supervision or oversight, can use the machine safely without no indication (children)
- ▶ This product is available as a commercial and similar purposes as follow:
 - Shops, offices, and other working environment
 - Farms and hotels, motels and other users of residential environment
 - Accommodation in an environment that provides breakfast
 - Food service and similar non-retail applications

[Notes on the Refrigerant]

- ▶ This product used R-404a, non-flammable gas for the refrigerant. Please do not damage the refrigerant when you move the product
- ▶ The refrigerant to reduce the air pollution potential expected to leak, the Super Snow machine in accordance with the amount of refrigerant used. Require of space (R-404a 8 in 1m³ space required per g) need for this product need to be install.
The used amount of refrigerant is marked on the label

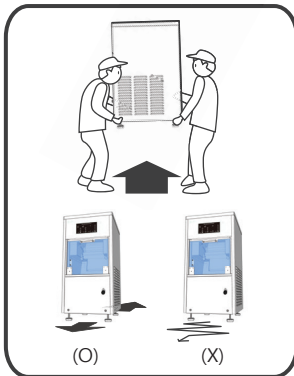
[Disposal considerations]

- ▶ This product is consisting of: non-flammable refrigerant gas, R-404a and insulation with cyclopentane. Please contact with district office or community center for safety disposal
- ▶ Do not damage the pipe

This product is for housewares use only.

Please contact service center for qualified technician for the service

TRANSPORT AND INSTALLATION

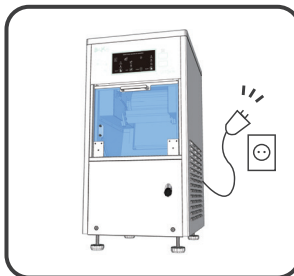


Remove all food and liquid from the Super snow machine.
Tap secure the clear door in the closed position.

Transport upright over long distances. Transport the machine with two people. (figure reference).

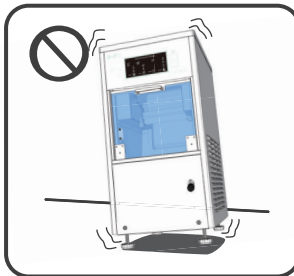
Please move the product in a straight direction (front and rear) during installation, repair, and cleaning.

Moving in zigzag pattern may result in internal damage.



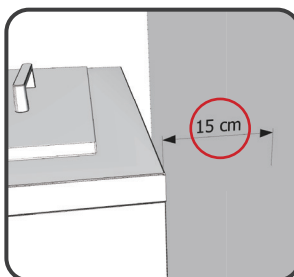
Install in a secure place with easy access to the power cord.

Avoid places where possible electric shock and fire may occur.



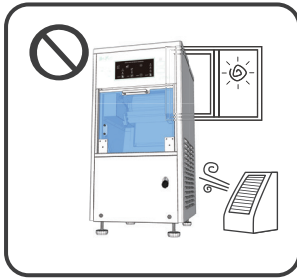
Install the machine on a sturdy and level floor close to a water drain.

Uneven floors may cause vibrations and noise.



Install and maintain the proper spacing around the machine.

Install 15cm away from the back wall. Inadequate spacing may cause a lack of ventilation, which may result in condensation and will shorten the life of the machine.

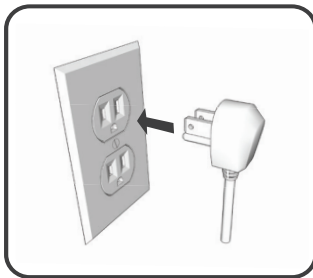


Please avoid installation in places of direct sunlight and extreme cold.

Install within temperatures of 5°C and high in 25°C

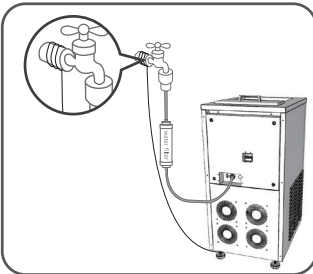
If the temperature is too high or low this may result in an overworked machine.

INSTALLATION – GROUNDING METHOD



Please ground electrical to prevent a short circuit or electric shock.

Insure all electrical outlets are grounded properly.

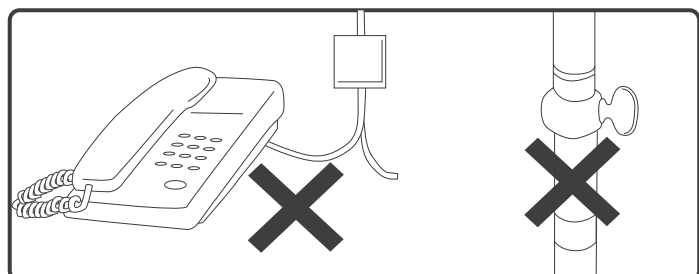


If a grounded terminal outlet is missing, ground the machine using copper wire to the water faucet.

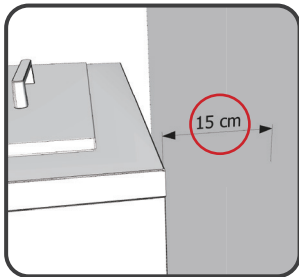
Please coil up about 2~3 times with copper wire on faucet.



- Do not ground on gas pipes, plastic pipes or telephone lines.
- Ground wires are available from the BK Korea service center (S-cubism) and connect to the back of the machine.

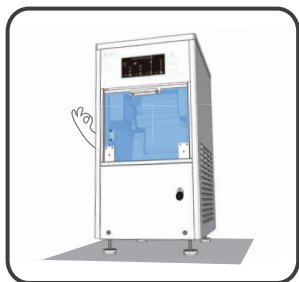


INSTALLATION METHOD



1. Select the place where you like to install

Leave space between 15cm from machine to wall

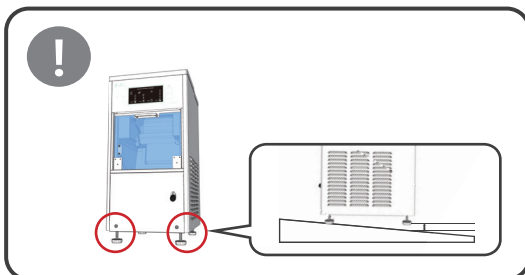


2. Make the bottom level of the place you want to install and adjust the height

Please adjust the plank that can adjust the height. Press the left and right corners during the operation, to check machine is moving

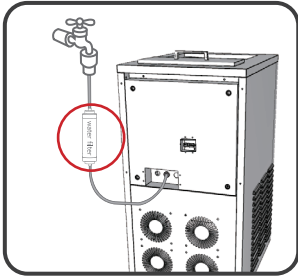
The floor surface is horizontal when machine is not shaken

[Installation on a uneven surface]



Lightly hold the machine, adjust the machine horizontal by put shingles on the low side.

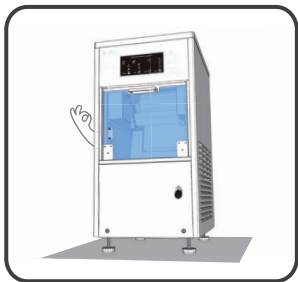
CONNECTING THE WATER SUPPLY HOSE



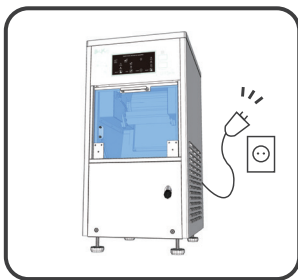
1) Connect the water filter as shown on the picture on the left.

Do not connect with hot water, cause the mechanical damage

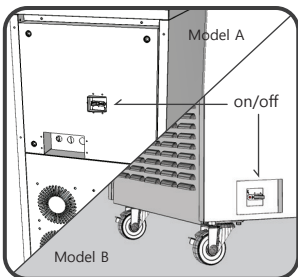
Do not use the old water hose. Please connect with the new one that came with this machine



2) Make sure the machine maintains level.



3) Connect the power cord.



4) Turn on the power switch 'On' and check the LED light is on inside of the ice bin and control panel.

When LED light is on inside of ice bin, the 'STATUS' icon will flash with white color light.

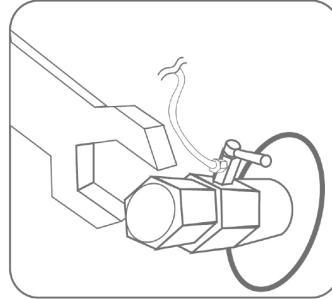
The power switch is located either backside or right side below.

[Water supply hose connection]

If water leaks after connection



► Disassemble the water supply hose.



► Properly check the valve for any damage or debris. Apply teflon tape and thread tightly. If water still leaking, please call BarsKorea service center for the repair.



- If the water faucet and the water supply hose are different in sizes, please purchase the correct water faucet adapter to fit the supply hose.
- Lock the water faucet when not in use for a prolonged period of time.
- Water cooling type can cause damage and overheating.
- Feed house and hose connector can be purchase separately in Bars Korea service center.

[Using the water hose extension]



Try this method if product is fall away from the water faucet



1. Purchase the water hose and connect

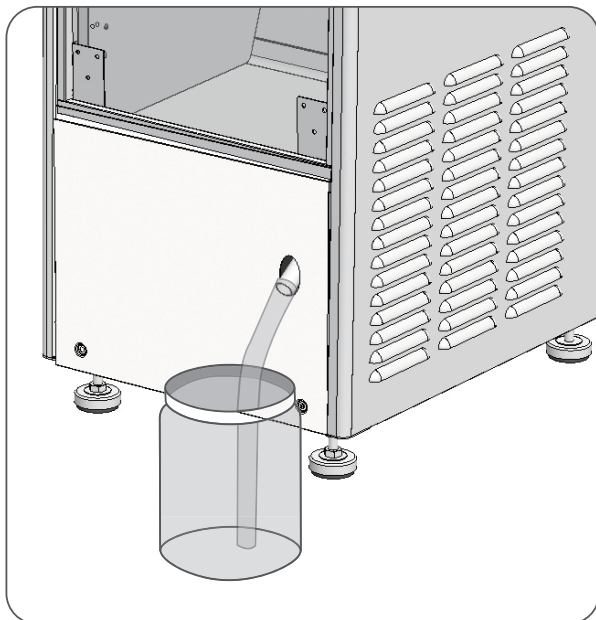
- Purchase the extended water hose from Bars Korea service center
- Contact a qualified technician or service representative

2. Connect using the spare hose.

- Use the cold water connection only
- Purchase from the Bars Korea service center for supply hoses and hose connectors.

[Connecting the drain hose]

See detail after connect the drain hose



Water and ice may leak over the drain.

Installing the drain hose, lower than the drain
(Picture on the left).

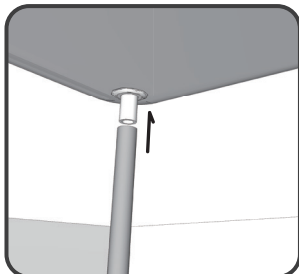
Do not extend the length more than 1.0m.
This can cause failure of drainage.

Drain pipe is located in front side cover.

Connect rubber hose on the drain pipe and
container underneath the hose - as shown on the
picture on the left. This will prevent water leakage
during operation and cleaning.

VAT (MILK CONTAINER) INSTALLS AND REMOVES

[Install]

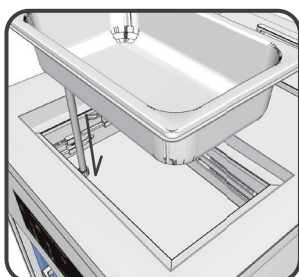


1. **First of all, push the silicone hose one end connect with deep pan, and other end insert on the hole.**

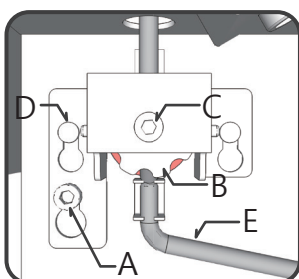
Make sure the deep pan whole stays in right rear side.

Insert an about half of the protrusions. Makes it difficult to remove when insert too much.

Silicone hose is a consumable item, so please wash toughly after use. Change the new hose every month.



2. **Insert the silicone hose on the hole carefully.**



3. **The names and functions of the parts**

- Important to know the part during the install and separate the vat from the super snow machine

A. Mounting bolt for stop-bar - The bolt that holds the stop-bar not to move.

B. Interval control disk - The disk that is to fix the mounting bolt(C) after adjust.

C. Mounting bolt - The bolt that adjusts the gap between silicone hose and stop-bar.

D. Stop-bar pin - The pin that functions as rail to move the stop-bar.

E. Silicon hose - The hose that liquid flows from Vat container.

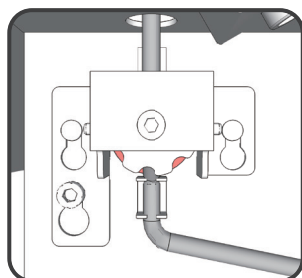
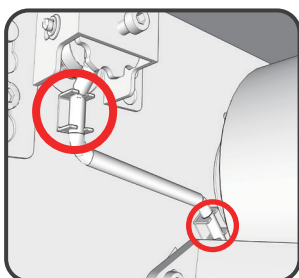
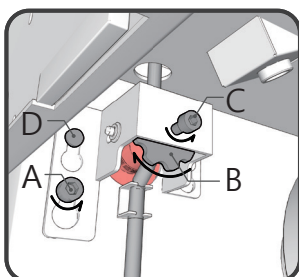
4. **Check the silicone hose, make sure insert correctly, adjust the stop-bar and stop-bar pin hole together.**

- Place Stop-bar pin(D) and Mounting bolt for stop-bar(A) on stop-bar pin hole and push down stop-bar (see figure on the left)

- Tighten the mounting bolt for stop-bar(A) in clockwise.

- Turn clockwise the mounting bolt(C) until silicone hose is pressed to back disk.

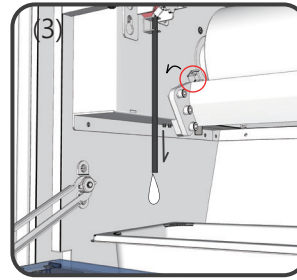
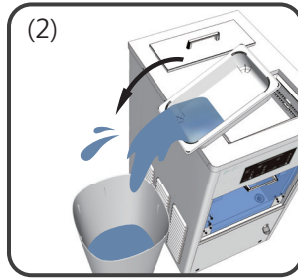
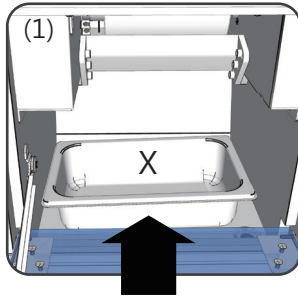
- Turn couter clockwise the interval control disk(B) until tighten between the silicon hose and disk.



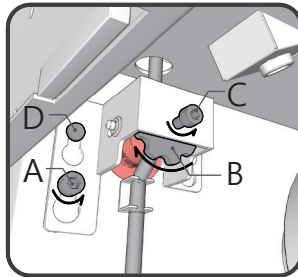
5. **Fix the silicone hose on the silicone hose guide to let liquid flow into the water pan.**

- Check the silicone hose and the stop-bar, make sure the part are tighten in the super snow machine.

[Separation Method]

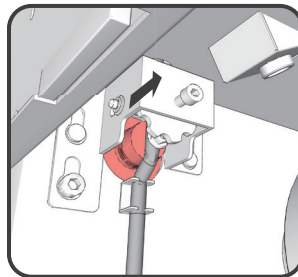
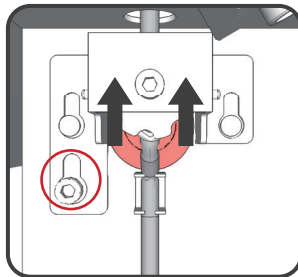


1. Please prepare a container(x) before remove the Vat container from the machine and put it in bin storage. (1)
- Please empty out the liquid from Vat container.
(2)
- Remove silicone hose from the alignment pin.
(3)

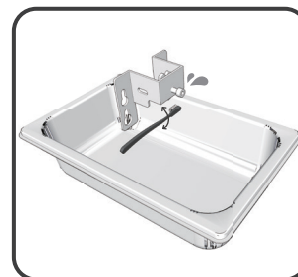
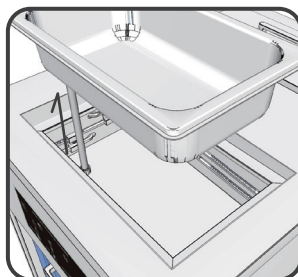


2. Turn Interval control disk (B) on Stop-Bar clock wise 2~3times and then turn Mounting bolt(C) Counter-clock wise.

- Remained liquid will flow down into container(X) though silicone hose.



3. Turn counter clockwise the mounting bolt for stop-bar(A) 2~3times and lift up the stop-bar and remove from the super snow machine.



4. Remove the silicone hose from the bracket and lift up the stainless vat to remove.

Clean the separate part and stainless vat with dish soap and sponge. Rinse and let it dry.

Keep the separated part carefully - do NOT lose it.

[Note before pouring liquid in to the Deep Pan]

Do NOT use any strong acid substance or toxic substance into the machine

Causes of infection, electrical shock, injury, damage of machine, and fire

Check the silicon hose

Please keep clean of Solenoid silicone cover (Red part in above picture).



Wreck of cleaning silicon hose cause of the malfunction and shortened life of the machine. Also cause of illness.

USING RELATED METHODS

[Check before use]

When the smell in the Super Snow machine

- ▶ Please follow the 'cleaning method', clean the machine and open the top and front acrylic door and let it dry
- ▶ Please remove tapes and any attachment causes odor

First activation of Super Snow Machine

- ▶ Please let it run for 20~30min until refrigerant work properly. If refrigerant is not active, the drum does not freeze well

Hear the big noise in first activation

- ▶ During the first activation, drum/inner compressor and motor begin to lower the temperature by rotating in high speed rotation. The noise will get quite after 2~3days

Black out during use

- ▶ Please remove the ice inside of bin and turn off the power switch. When power is back on, it prevent the mechanical damage

Super Snow Machine stop during the activation

- ▶ Super snow machine stop automatically when machine is over-heated. Do NOT turn on the power; let it rest for 20~30min. Check the water supply/drain and radiator fan also

Check the inside of before use

- ▶ Please check the inside the deep pan, silicone hose, and the all the surface for the dust or foreign substance. Clean the drainage holes every week.
- ▶ Please follow the instruction to prevent damage of machine

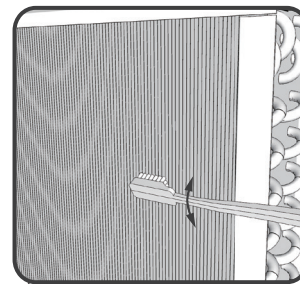
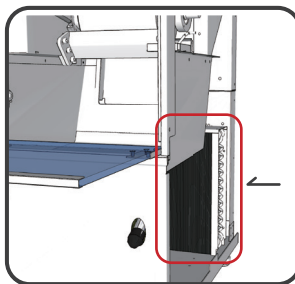
Do NOT leave the content in the deep pan for long time. The fungi or insects may develop inside of the deep pan and machine.

Product damaged due to negligence of the customer will be charged additional fees for service requests.

[How to Use Super Snow Machine - Condenser]

To improve the cooling efficiency...

Please open the back side and both side of the machine, and clean thoroughly all over the surface (reference the photo on right).



The dirt and foreign substance in condenser, causes the deterioration of freezing function.

The drum will not freeze properly, due to the dust and dirt all over the compressor and motor. Also cleaning on a regular basis helps prevents the odor and hygiene of product produced in machine.

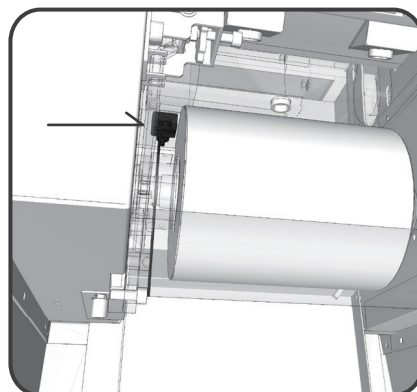
[Using related methods]

Drum is not freezing properly and machine is shutting down during the operation

- ▶ The cooling fan is not working properly. Let natural cooling down the over-heated compressor or motor for 30 min

The liquid over flow inside the water bin

- ▶ The milk (liquid) film might cover the sensor inside. Sensor located behind the drum.
(Please wipe down the sensor gently - check figure on the right - wear latex glove)



Milk (or liquid) does not coming out

- ▶ Check the silicone hose – make sure silicon hose well fit into the valve

Check the silicone hose – make sure silicon hose well fit into the valve

- ▶ Check the water is turned on the strong regulation. If yes, please lower it down
- ▶ If the texture of snow flake is like hair, adjust the blade inside the machine and level of the refrigerant (call Bars Korea for our qualified technician)
- ▶ If snow comes out in one side, please adjust in horizontal

Drum is freezing during the 'Clean' mode

- ▶ Turn off the power, call Bars Korea service representative for the service

Phenomenon of water on the floor

- ▶ Check the water hose is removed

















BASIC KEY FUNCTIONS OF KEY

[Prepare of operating]

1. Connect the power plug (power plugs are varies from country to country) to the outlet (recommend more than 20A) and turn on power switch located on the back/right side.
2. Use single power cord for super snow machine. Do not use the multi tap.
3. Connect the stainless vat on top of the machine and connect the silicone hose on the valve. Make sure the silicone hose is connect correctly. Pour the liquid in the vat and use the 'Select' button to the desired function.

[Control panel]



- ① Indicator lamp - Producing indicator      
- ② Indicator lamp - Cleaning and optional function indicator  
- ③ Power indicator lamp 
- ④ Touch control panel    
- ⑤ Alarm speaker 
- ⑥ Condenser temperature (hot) 
Heat Temp(°C)
- ⑦ Inner bin temperature 
Bin Temp (°C)

[Indicator and button functions]

Touch Switch	Number	Indicator Lamp	Method of operation
Power Switch (located in the right or back side of the super snow machine)			► Indicated when power switch is on
POWER	1st Touch 'On'		1st Touch: Machine is automatically selected on 'Flavor' and 'One' mode - the lamp indicated on: 'POWER', 'WATER', and 'ONE' - The white LED light indicated on 'Statue' (exclamation box icon)
	2nd Touch 'On'		2nd Touch: The machine back to the initial state
STATUS	STATUS	<p>■ During the 'Power' mode, - the 'Status' lamp indicates on the control panel - Flickering with red light</p> <p>■ During the 'Start' mode, - the 'Status' lamp flickering on the control panel - Green light indicated on the 'Status' icon</p>	► Flickering red light: Stand by indicator before change to 'Power' mode to 'Start' mode.
			► Flickering green light: indicated when water/liquid still supplying on the machine. ► Green light on: indicated the snow are producing normally
SELECT Located on the left	SELECT 1st 2nd 3rd 4th		<p>When power in on, 'Flavor' and 'One' mode is set as standard. 'Water' and 'One' indicated on the control panel.</p> <p>1st Select ► Set as 'Flavor' and 'Cont' mode, the icons will indicated with LED light</p> <p>2nd Select ► Set as 'Water' and 'One' mode, the icons will indicated with LED light</p> <p>3rd Select ► Set as 'Water' and 'Cont' mode, the icons will indicated with LED light</p> <p>4th Select ► Set as 'Flavor' and 'One' mode, the icons will indicated with LED light</p> <p>※ Press 'Start' button, after set desired select mode.</p>
START	START ON		<p>► by pressing 'Start' button, begin to activate the super snow machine by selected mode.</p> <p>※ Super snow machine activates depends on the select mode from the left select button and right select button by pressing 'Start' button.</p>
	WATER LEVEL ON		► When 'Water' lamp indicated, water or liquid from the stainless vat begin to supply the liquid to the machine.
			<p>※ After finished supply the liquid on the machine, 'Level' indicator will off.</p> <p>► During the clean mode (by selecting 'Spray' or 'heat' mode) 'Level' light indicates when soap or water is needed for cleaning. The light automatically off when soap/water are supplied.</p>
SELECT Located on the right	SELECT 1st 2nd (Optional function button)	<p>2nd: Water Spray</p> <p>1st: Table Turn</p>	<p>2nd Water Spray</p> <p>► Mode for hand wash. Press the mode on 'SPRAY' to set as a clean mode. During the clean mode, press 'START' button drum will automatically rotate without freezing.</p> <p>► Press 'START' again to stop rotation of drum</p> <p>1st Turn Table (Optional function)</p> <p>► Turn table attached on the machine. Need to place the bowl in the middle of the turn table to get snow from the machine.</p> <p>※ The optional function are located on the right side of the control panel. Just select the desire function mode and press 'Start' to activate.</p>
Alarm Speaker		Located above the heat temperature screen	Alarm rings as notification of water or liquid from the stainless vat is not supplying on the super snow machine.

[How to activate the Super Snow Machine]

1. Activate and produce snow method (Use 'Select' button on the left)

- ① Turn on the power switch located on the back side or right side of the machine.
 - 'STATUS' indicated with LED light.
- ② Press 'POWER' button.
 - Drum begin to rotate and compressor begin to activate in after 5 seconds.
- ③ Use 'SELECT' button on the left, set desired mode to producing the snow.
 - 'FLAVOR' and 'ONE' mode is set as standard mode. If you like to change to different mode, use select button to change the mode. (Japanese model does not applied the 'water' mode)
 - Use 'SELECT' button to select the portion size of the snow: 'ONE' or 'CONT' mode.
- ④ Press 'START' to activate the super snow machine.
 - The super snow machine automatically stop after produce one bowl of the snow, when mode is select in 'One'.
 - During the 'Cont' mode, the alarm ring if liquid from the stainless vat is empty.
 - When inner ice bin temperature drop to -10°C, it start producing the snow to prevent from melting.
 - If liquid does not supply on the machine in a minute, the alarm rings again and automatically turn off the 'Power' indicator and begin to activates the inner freezing system to keeps the snow inside of the bin.
- ⑤ By change to the 'POWER' mode, the inner freezing system automatically activates.
 - Able to use inner freezing system while using producing mode.
 - The inner freezing system automatically turns off, after done with producing snow.
- ⑥ To stop producing the snow, press 'POWER' button.

2. Activate optional function method (Use 'Select' button on the right)

※ 'Clean' mode only activates in 'Power' off condition.

- ① **Turn Table** (Optional)
 - ※ Use in either 'POWER' mode or 'START' mode.
 - Use 'SELECT' button on the right to set the 'TURN' mode.
 - Place bowl on the middle of the turn table.
 - Press 'SELECT' and turn table begin to rotate and get falling snow from the machine. By pressing 'SELECT' button again to stop the turn table. You can take out the bowl now.
- ② **Clean Mode** ('SPRAY' functions are available for cleaning purposes)
 - I. Use 'Select' button on the right and choose 'SPRAY' mode to cleaning the machine.
SPRAY: Cleaning mode by self hand washing of Super Snow Machine.
 - II. During the 'SPRAY' mode by pressing 'START' button to cleans the drum easily - drum rotates. Press 'START' button again the stop rotate of drum.
 - III. To turn off 'CLEAN' mode
Press 'SELECT' button sequentially: Spray On → 'SPRAY' and shut off.
- ③ To turn off the clean mode
 - I. Use the 'SELECT' button on the right, just press sequentially until set as off mode.

HOW TO PRODUCE SNOW FLAKE

[Produce with WATER]

1. Turn on the power switch.
2. Use 'SELECT' button located on the left, select the mode to 'WATER' and press 'SELECT' button again. Select the amount mode of: single or continuously of snow.

It takes about 30 seconds to freeze the drum. Check the color of exclamation mark icon (status). The green light is on, when drum is activating. The red light is on, when drum is NOT activating.
3. Press 'START' button. As soon as Super Snow done with warming up, it begin to produce snow flake.
4. The freezing system will automatically turn on, when Super Snow stop produces the snow flakes to prevent from melting.
5. To produce snow again, press 'START' button again.



If water is not coming out from the water line, please check the water supply valve.

[Produce with Flavored liquid: juice, milk, etc.]

ex)



1. Add desire liquid on the stainless vat located on top of the machine. The liquid has to be edible and runny consistency.
2. Use 'SELECT' button located on the left, select the mode to 'FLAVOR'.
3. Press 'SELECT' button again and change the amount mode of: single or continuously of snow.

It takes about 30 seconds to freeze the drum. Check the color of exclamation mark icon (status). The green light is on, when drum is activating. The red light is on, when drum is NOT activating.
4. Press 'START' button. As soon as Super Snow done with warming up, it begin to produce snow flake.
5. The freezing system will automatically turn on, when Super Snow stop produces the snow flakes to prevent from melting.
6. To produce snow again, press 'Start' button again.



If flavor liquid is not coming out from the silicone hose, please check the silicone hose and valve. Make sure silicone hose go through the valve correctly.

CLEANING METHOD

[Cleaning method]

- ※ The bacteria and fungi in the air, could grow with humidity during the humid summer or indoor pollution
- ※ You may see the changing color of water do to the not used long time plumbing or water supply and aging plumbing connection.

Latex gloves are recommended during cleaning.

- ▶ Do NOT put your hand underneath the machine, personal injury may occur.
- ▶ Do NOT disassemble the machine.
- ▶ Do NOT use: acetone, thinner, alcohol, flammable substances and/or benzene as cleaning materials.

[Cleaning the drain hose]

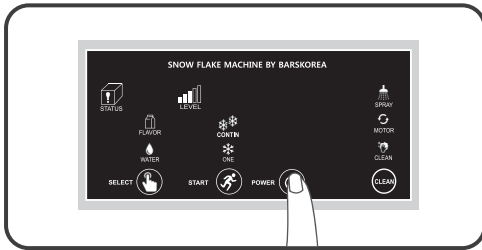
Pull out the drain hose from the machine and use high pressure water to clean the inside of water hose. Spray with sanitizer after cleaning.

[Cleaning the front lower cover]

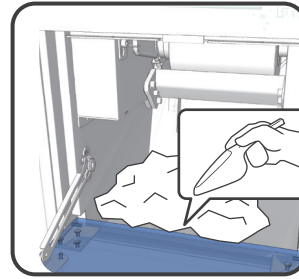
Gently remove the cleaning cover (located on top) and lower cover from the machine, wash the both cover in the sink and dry. Insert the front lower cover.

Wipe down the water from inside the bottom of the machine.

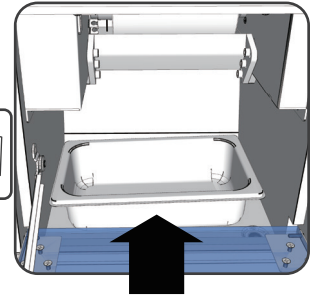
[How to clean Super Snow Machine]



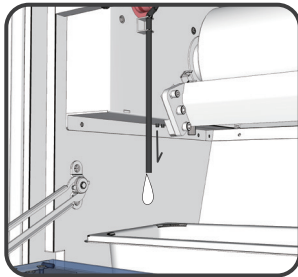
1. Press 'POWER' button to stop activating the machine. Make sure check the compressor is completely stopped. Use 'Select' button on the right, set the mode to 'Spray' mode.



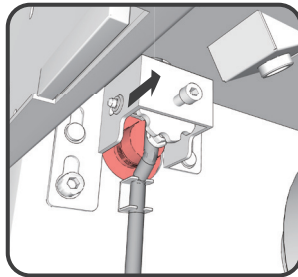
2. Use kitchen-use plastic ice scoop to remove all the ice inside of inner ice bin.



3. Place a container in Bin Storage to take remained liquid from Vat container and Silicone Hose

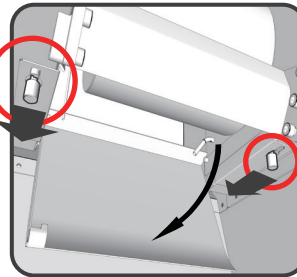


4. Remove Silicone hose from the alignment pin

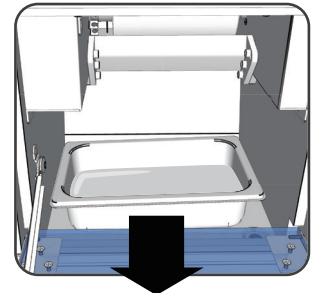


5. Refer to page 23; remove the stainless vat and stop-bar from the machine.

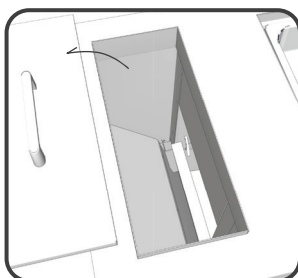
Be careful with separated parts - do not lose the part



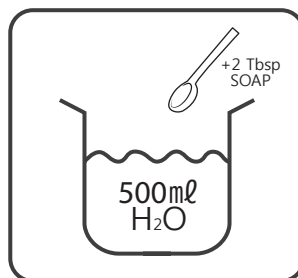
6. Open front clear door, push inward of both hold-level to open inner bin. Remove all the water or liquid inside of inner bin.



7. Please remove container from Bin Storage.

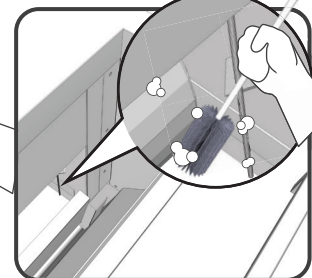
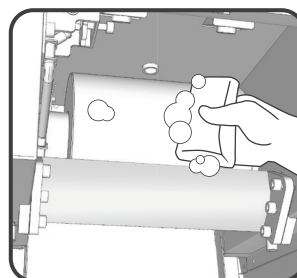


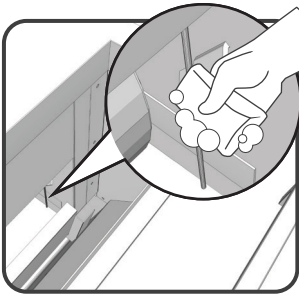
8. Remove the top cleaning cover. Pre-rinse the inside of machine with lukewarm water 100-110°F (37.7-33.3°C). Water temperature should not exceed 120°F (48.9°C). Rinse thoroughly. Use cleaning hose attached with machine for corner cannot reach with hand.



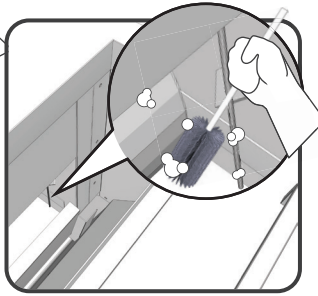
9. Use bucket add 500ml of hot water (160-170°F/71.1-76.7°C) and 2 tbsp. (30ml) of dish detergent to make dish solution. The **dish detergent must contain alkaline or chlorine** to dissolve milk fats and proteins from the machine. Use non-scratch scrub sponge to wash the machine. With sponge and dish solution, wash: drum, inner storage, and inner bin. The surface cannot reach with hand; use baby bottle cleaning brush to clean give up-down motion.

During the 'Spray' mode, press 'Start' button to clean drum easily- drum rotates automatically. Press 'Start' button again to stop.

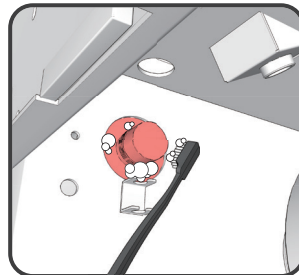
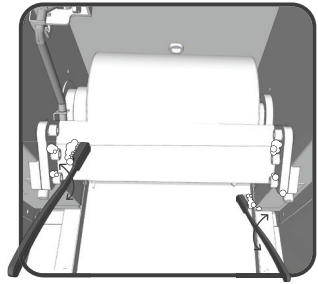
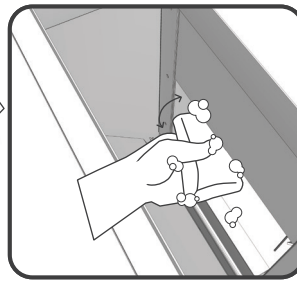




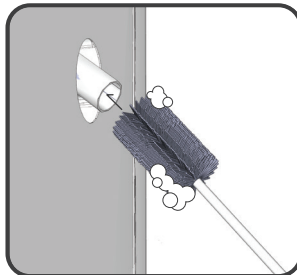
10. Cleaning the sensor with non-scratch scrub sponge. Just be careful while cleaning. The sensor will break if give too much pressures.



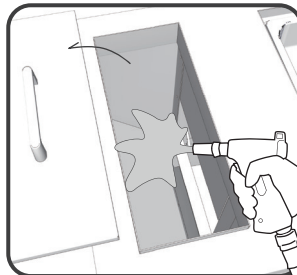
11. Double check the edge and side, make sure clean thoroughly with dish solution with baby bottle cleaning brush. Especially check the drum bolt part
- use toothbrush to clean the bolt.



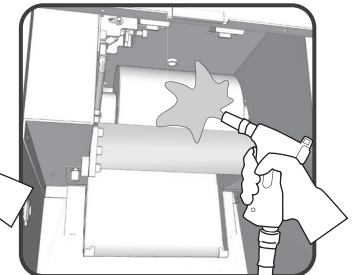
12. Clean the place where stop-bar has removed from with dish detergent. (Solenoid Silicone Cover)



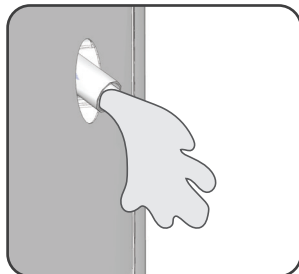
13. Use thin cleaning brush with dish solution to clean drain hose. Give up-down motion to clean inside. Make acid rinse solution by mixing 1oz(28.3g) of acid(example :distilled white vinegar) and 5gallons (18.9L) of tap water. Flushing through the drain hose for 2-3minutes.



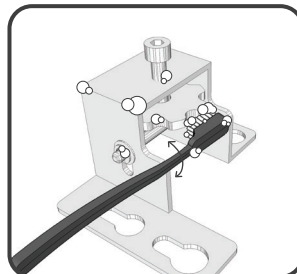
14. Rinse the inside of machine with lukewarm water 100°F (37.7°C) to 110 °F (43.3 °C) thoroughly for minimum 3-5 minutes on each side/section. Especially drum and inner bin, and sensor area. Use cleaning hose for rinse corner as well.



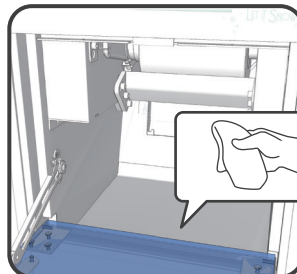
15. Change the position rinse the inside of machine with lukewarm water and rinse off the soapy water all over the surface.



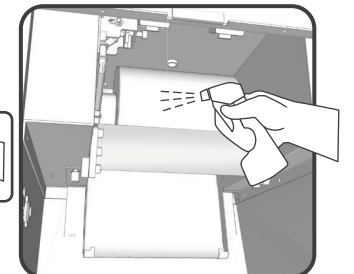
16. Flushing enough water to rinse off inside of drain hose. Flushing through the drain hose for 3~5minutes.



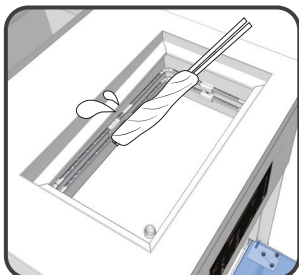
17. Please clean removed Vat container, Silicone hose and Stop-bar (According to pg.33, pg.34)



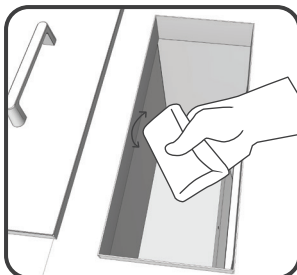
18. After remove all the soapy water from the machine, use clean dry white linen to wipe off the water.



19. Use non-toxic sanitizer (sanitizer must comply with 40 CFR 180.940) spray all over the machine includes top fridge system part, drum, and inner storage.



20. For the stainless vat fridge part, use stick (chopstick) wrapped with clean cloth in the end, wipe off the gap and edges with non-toxic sanitizer (sanitizer must comply with 40 CFR 180.940). Wipe the bottom hole as well.
Q-tips are recommended to use the gap and corner.

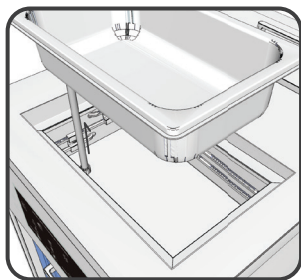


21. Wipe off the sanitizer with clean dry white linen.

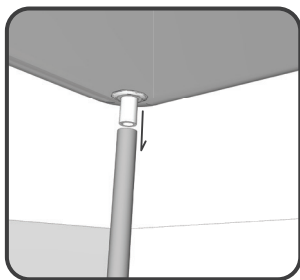


22. Wipe off the machine thoroughly and let open the front clear door and top cleaning cover for overnight for fully dry.

[How to clean stainless vat]



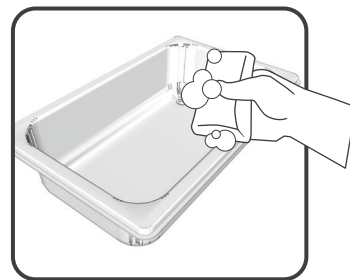
1. Remove the stainless vat from the top (Remove the silicone hose as well)



2. Separate the silicone hose from stainless vat.



3. Pre-rinse the stainless vat and silicon hose with lukewarm water 100-110°F (37.7-43.3°C). Water temperature should not exceed 120°F (48.9°C). Discard pre-rinse water and flushing until relatively clear.



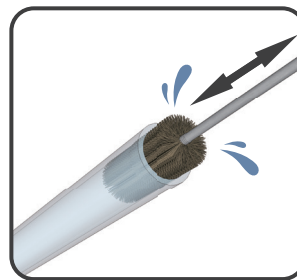
4. Add 1 tbsp. (30ml) of dish detergent and 500ml of hot water (160-170°F/71.1-76.7°C) together and make dish solution. The dish detergent **must contains alkaline or chlorine** to dissolve milk fats and proteins from the stainless vat. Use non-scratch scrub sponge to wash the stainless vat and silicone hose.



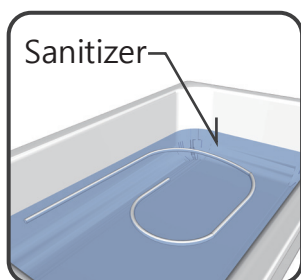
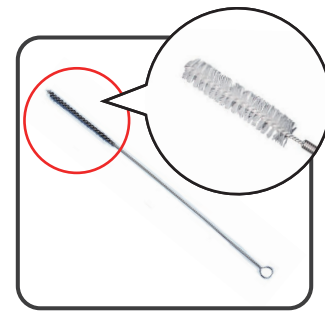
5. Rinse stainless vat and silicon hose with lukewarm water 100°F (37.7°C) to 110 °F (43.3 °C) thoroughly for minimum 2-3minutes.



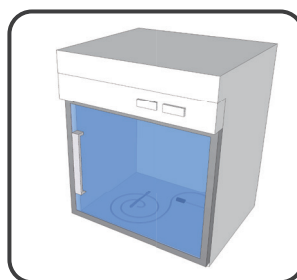
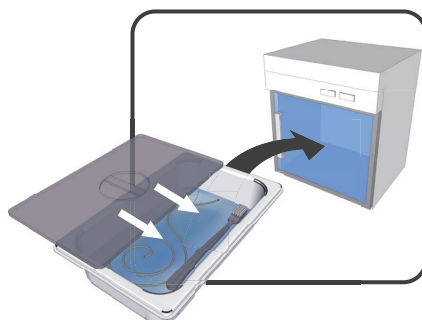
6. Wipe off the water with clean dry white linen. Spray with non-toxic sanitizer (**sanitizer must comply with 40 CFR 180.940**) on the stainless vat and wipe off with different clean dry white linen.



7. Clean the silicone hose using brush for hose with sanitizer.



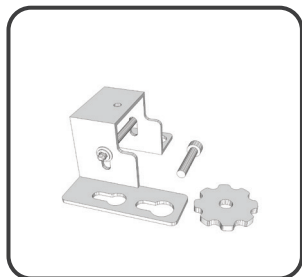
8. Put hose and Parts of stop-bar, other cleaning tools in sanitizer after clean.



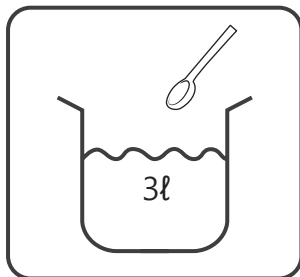
9. Keep silicone hose and other cleaning tools in germicidal detergents and place in sterilizer with cover on or keep silicone hose and other cleaning tools in sterilizer in dried condition.

- Parts of stop-bar
- Brush for hose
- Ice scoop
- Linen

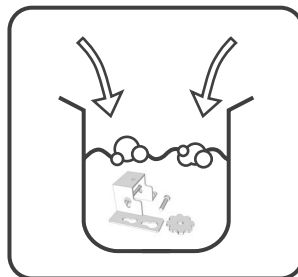
[How to clean 'Stop-bar']



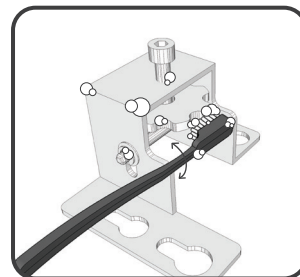
1. Remove the stop-bar and part from the machine. Pre-rinse the stop-bar and parts with lukewarm water 100-110°F (37.7-43.3°C). Water temperature should not exceed 120°F (48.9°C)



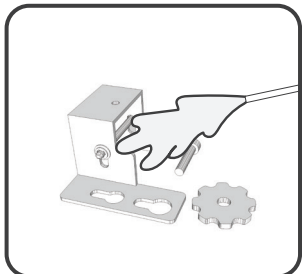
2. Use 5 liter sized bucket, add 3L of hot water (160-170°F/71.1-76.7°C) and 180ml of dish detergents and make dish solution. The dish detergent **must contain alkaline or chlorine** to dissolve milk fats and proteins from the stop-bar and parts.



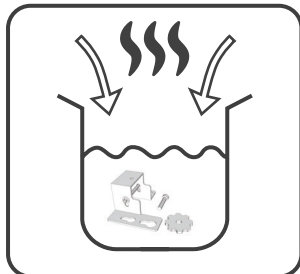
3. Add all the part on the dish solution for 5 minutes.



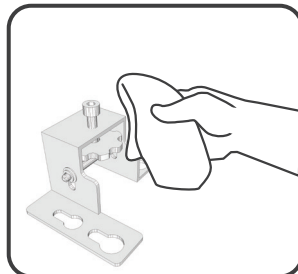
4. Pull out the part one-by-one and scrub carefully with toothbrush. Brush all parts thoroughly. After brushing stop-bar and parts, drain the dish solution.



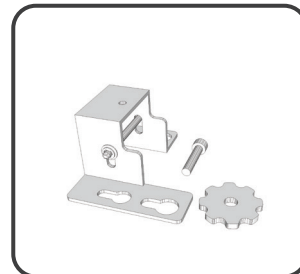
5. Rinse stop-bar and parts with lukewarm water 100°F (37.7°C) to 110 °F (43.3 °C) thoroughly for minimum 2-3minutes. .



6. Pour 82.2°C (180°F) of hot water on the clean bucket and put all the rinsed stop-bar and parts for sanitize.



7. After 30 seconds, remove the part from the bucket. Wipe off the water from the part with clean dry white linen and let it dry.



8. Be careful not to lose the part during the cleaning process.

BEFORE REQUESTING REPAIR/SERVICE

[Solution after Checking Mechanic Problem]

The Phenomenon of water on the floor.

- ▶ Check if water supply or drain hose removed from the machine

Hear 'tok' sounds in the machine (any noises come out from the machine

- ▶ The sound components increase or decrease when the temperature changes, while in the machine
- ▶ A similar sound occurs, when frost from the cooler begin to defrost

Heard the 'rattle' sounds from the machine!

- ▶ The noise comes from compressor or fan depending on the product begin to start or end. The ambient temperature or condition of the machine, such a rotation of compressor or fan could affect the noise of the machine also.
This is similar fundamental of starting car engine and accelerating of car.

Just finished the installation, but noises are really loud!

- ▶ When the super snow machine operating in first time, the compressor and the fan will rotate rapidly to reduce the temperature inside the machine quickly.
The sounds can be heard, and large. As long as 2 or 3 days after, falls below a certain temperature is lowered and the rotation speed of the compressor or fan noises will reduce.

There is a strange sound and severe noise

- ▶ Install the machine in flat and sturdy surface of floor
- ▶ Leave space of side and back between 15cm from the wall
- ▶ Make sure nothing around the machine
- ▶ Do not place heavy objects on top of the machine

No Power

- ▶ The power is off of the machine? Turn on the power button please
- ▶ Maybe the circuit box is down? Please turn ON the circuit box switch.
- ▶ Power plug is removed maybe? Please plug the power plug back.
- ▶ Maybe earth leakage breaker is Off? Please turn ON the earth leakage breaker
- ▶ Maybe fuse is out? Please replace the new fuse

Super Snow machine is not working

- ▶ Water supply is locked maybe? Please turn back on the water supply.
- ▶ Use the multi tap or extension code? The may result in fire due to the overheating of the power weakened. Please do not use the multi tap and extension code

Machine is not operating even power is on

- ▶ Machine automatically stopped when compressor is overheated. For the 'Water-cooling type machine' please open the front lower cover and let it cool down for 10min. Check the water drain is working properly. Start the machine again after cooling.
- ▶ For the 'Air-cooling type machine' please open the lower cover and let it cool down for 10min. Starts back again.

※ Please call Bars Korea service center if machine is still NOT working properly**Water is over floating in internal water bin**

- ▶ Water pressure is too high maybe? Please lower the water pressure, valve located in back side of the machine
- ▶ Have you cleaned the water sensor? Please wipe off the water sensor.

Milk is not coming out

- ▶ The valve from the deep pan hose is dirty or opener is not opening properly?
Please use it after clean the opening valve and dry.

Water is not coming out

- ▶ Have you turn off the water supply? Please turn on and try again.

Ice is freezing slowly or not freezing

- ▶ The water pressure is too low maybe? Please check the water pressure
- ▶ The machine is too close to wall maybe? Please leave a space of minimum 15cm (5.9in) from the back wall. .

Loud noise and vibration during the operation

- ▶ The machine filled too much of refrigerant. Please contact Bars Korea service center.

Machine off and on back and forth

- ▶ The front panel is pressed maybe? Please slightly tightened the four screw around the panel and check again

Rough grinding noise from the drum

- ▶ The remaining refrigerant gas cause the noise in drum (only apply to the freezing phenomenon during clean mode)
- ▶ The refrigerant operates as a completely discharged, please change back to water or flavor mode and operate little while and turn off the machine. When drum is stop, please turn back on the power, set as clean mode again and rotate the drum again by pushing flake button

Note: the coolant remaining in the drum, can cause rough grinding noise from the drum when creates the water or flavored snowflakes. Please follow the steps above, will help the drum back to normal condition.

※ If error occurs beside of this circumstance, please call Bars Korea Service center.

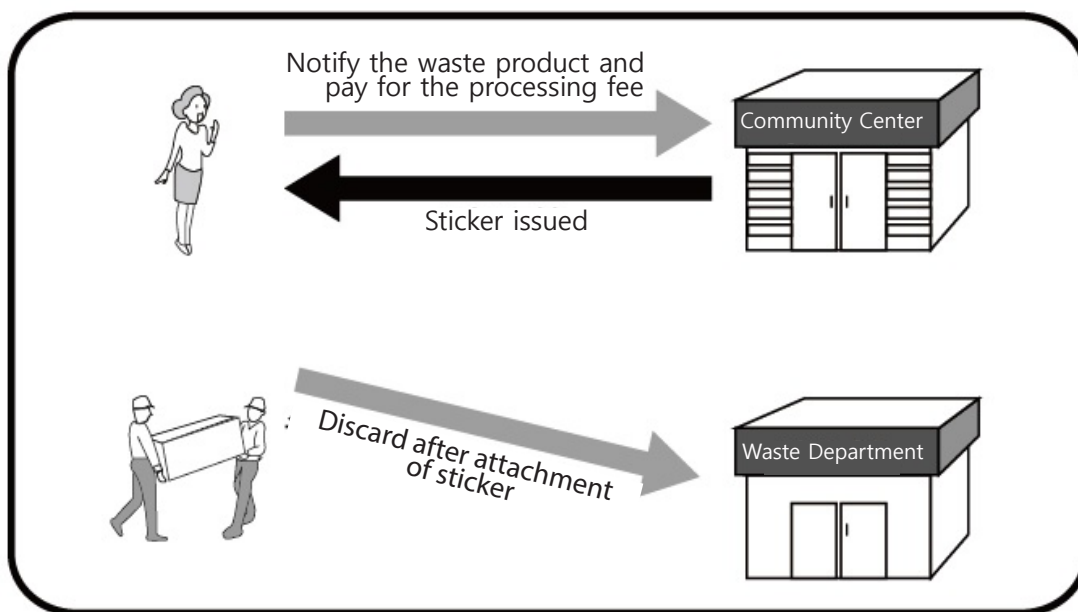
OTHER INFORMATION

※ Waste Treatment of Product

For the environmental protection purposes and recycling the waste electronic products should be handled properly

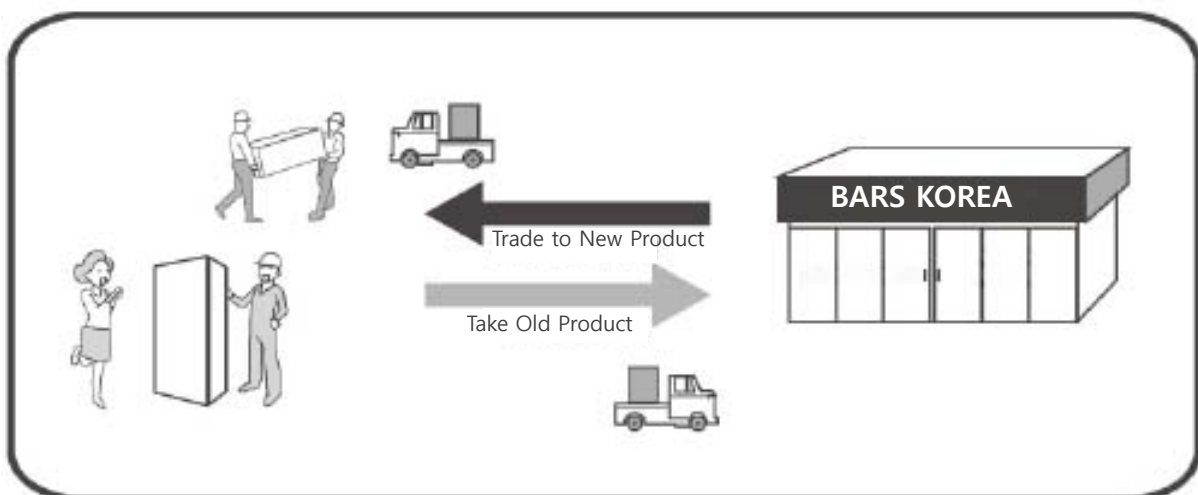
[Processing Fee]

If you like to discard without purchasing new product, please call your local community center or waste department to be discard your machine



[Free Treatment]

If you like to trade-in or purchasing new Super Snow machine from the Bars Korea, we will handle the machine for you without service fee.



TECHNICAL SPECS

Model	SUF-200NW-CK
Ice type	Snow shaved/flavored snow ice
Cooling Type	Air Cooling
Hydraulic Pressure	0.05~78 Mpa (0.5~8 Kgf/cm2)
Weight	65Kg
Capacity/Day	125kg/day
Bin Capacity	6.0kg (41bw/200g) - 80min
Dimension	392 x 507 x 811 mm
100-120V Power Specifications	100-120V/60Hz, Single phase
	0.9kw/9Amps
220V Power Specifications	220V/60Hz, Single phase
	0.65kw/4.5Amps
230-240V Power Specifications	230-240V/60Hz, Single phase
	0.65kw/4.5Amps

- ※ The design and specifications are subject to change without prior notice for quality improvement.
- ※ This instruction manual is public guide. The image used in instruction manual may not same as the product.

NOTES



Wonmigu, Jomaruro 403, 3F
Gyeong-gido, Bucheon City, South Korea

Tel: 032.581.3466

Fax: 032.581.8937

E-mail: barskorea@naver.com

Web: www.icemakerplus.com