

INSTALLATION / PHENOLIC FLOOR TO CEILING



1 INSPECTION
The components for this project have been custom fabricated. They are guaranteed with respect to workmanship and materials. Before beginning work, the units should be inspected. If damage occurred in transit, or if any other agencies that may have caused the damage.

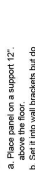
2 POSITION PANEL
a. Place panel on a support 12".
b. Set it into wall brackets but do not fasten panel at this time.



3 WALL BRACKETS AND FLOOR BRACKETS
a. Review the layout drawings and package lists that have accompanied this job.
b. Establish and mark panel center line from back wall.
c. Establish and mark panel center line from side wall.
d. Establish plaster floor anchor locations from side wall according to shop drawings (NOTE: anchors will be set in concrete prior to plaster).



4 POSITION PANEL
a. Place panel on a support 12".
b. Set it into wall brackets but do not fasten panel at this time.



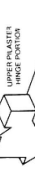
5 PILASTER PREPARATION
a. Align "U" brackets in position on rear of pilasters. Refer to layout drawing.
b. Fasten "U" brackets to pilasters with screws.
c. Pilasters at wall do not require support nuts. Pilasters at floor require support nuts (and floor fastening) as required by layout.



6 INSTALL PILASTERS
a. Slide shoes into pilaster.
b. Insert threaded rods to support pilaster.
c. Tighten door openings by setting support nuts to desired position.
d. Tighten locking nuts on top of pilaster.
e. Fasten panel to wall brackets using through bolts with barrel nuts.
f. Remove panel support device.



7 SECURING PILASTERS AND PANELS
Plasters must be both plumb and level. When erecting multi-compartment installations adjustments should start with level each pilaster by adjusting support nuts to desired position.
a. Level each pilaster by adjusting support nuts to desired position.
b. Fasten "U" brackets to pilasters with screws and fasten the door opening by setting support nuts to desired position.
c. Establish door openings by setting support nuts to desired position on threaded rods.
d. Tighten locking nuts on top of pilaster.
e. Fasten panel to wall brackets using through bolts with barrel nuts.
f. Remove panel support device.



8 DOOR ASSEMBLY AND HANGING
a. Review the layout drawings and package lists that have accompanied this job.
b. Establish and mark panel center line from back wall.
c. Establish and mark panel center line from side wall.
d. Establish plaster floor anchor locations from side wall according to shop drawings (NOTE: anchors will be set in concrete prior to plaster).



9 DOOR ASSEMBLY AND HANGING
a. Review the layout drawings and package lists that have accompanied this job.
b. Establish and mark panel center line from back wall.
c. Establish and mark panel center line from side wall.
d. Establish plaster floor anchor locations from side wall according to shop drawings (NOTE: anchors will be set in concrete prior to plaster).



10 MISCELLANEOUS HARDWARE
a. Install door bumper (and hook) in proper position.



11 CARE AND MAINTENANCE OF TOILET PARTITIONS
In order to provide toilet partitions with proper care and maintenance, the following instructions must be followed:
a. All surfaces must be kept clean with water and a mild soap solution only. Abrasive cleansers should not be used.



12 INSTALLATION PILASTER SHOES
a. Side shoe over anchoring.
b. Attach using vandal resistant screw.



13 CARE AND MAINTENANCE OF WALL PARTITIONS
Under no circumstances should these components be subjected to:
- Abrasive powders or pads - Water closet cleaners - Ceramic tile cleaners
- Solutions containing more than 1% by volume of ammonia
- Solutions containing acids or lye - Solutions containing enzymes



14 CARE AND MAINTENANCE OF OVERHEAD BRACED WALL PARTITIONS
Under no circumstances should these components be subjected to:
- Abrasive powders or pads - Water closet cleaners - Ceramic tile cleaners
- Solutions containing more than 1% by volume of ammonia
- Solutions containing acids or lye - Solutions containing enzymes



INSTALLATION / PHENOLIC OVERHEAD BRACED

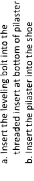


1 INSPECTION
The components for this project have been custom fabricated. They are guaranteed with respect to workmanship and materials. Before beginning work, the units should be inspected. If damage occurred in transit, or if any other agencies that may have caused the damage.

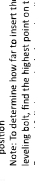
2 POSITION PANEL
a. Place panel on a support 12".
b. Set it into wall brackets but do not fasten panel at this time.



3 WALL BRACKETS AND FLOOR BRACKETS
a. Review the layout drawings and package lists that have accompanied this job.
b. Establish and mark panel center line from back wall.
c. Establish and mark panel center line from side wall.
d. Establish plaster floor anchor locations from side wall according to shop drawings (NOTE: anchors will be set in concrete prior to plaster).



4 POSITION PANEL
a. Place panel on a support 12".
b. Set it into wall brackets but do not fasten panel at this time.



5 PILASTER PREPARATION
a. Align "U" brackets in position on rear of pilasters. Refer to layout drawing.
b. Fasten "U" brackets to pilasters with screws.
c. Pilasters at wall do not require support nuts. Pilasters at floor require support nuts (and floor fastening) as required by layout.



6 INSTALL PILASTERS
a. Insert the leveling bolt into the threaded insert at bottom of pilaster.
b. Level the top of all pilasters by adjusting leveling bolts.
c. Note: To determine low/high leveling bolt, find the highest point on the leveling bolt and adjust leveling bolts that will be mounted in that location. Adjust all other leveling bolts accordingly.
d. Fasten panel to wall brackets using through bolts with barrel nuts.
e. Remove panel support device.



7 SECURING PILASTERS AND PANELS
Plasters must be both plumb and level. When erecting multi-compartment installations adjustments should start with level each pilaster by adjusting support nuts to desired position.
a. Level each pilaster by adjusting support nuts to desired position.
b. Fasten "U" brackets to pilasters with screws and fasten the door opening by setting support nuts to desired position on threaded rods.
c. Establish door openings by setting support nuts to desired position on threaded rods.
d. Tighten locking nuts on top of pilaster.
e. Fasten panel to wall brackets using through bolts with barrel nuts.
f. Remove panel support device.



8 DOOR ASSEMBLY AND HANGING
a. Review the layout drawings and package lists that have accompanied this job.
b. Establish and mark panel center line from back wall.
c. Establish and mark panel center line from side wall.
d. Establish plaster floor anchor locations from side wall according to shop drawings (NOTE: anchors will be set in concrete prior to plaster).



9 DOOR ASSEMBLY AND HANGING
a. Review the layout drawings and package lists that have accompanied this job.
b. Establish and mark panel center line from back wall.
c. Establish and mark panel center line from side wall.
d. Establish plaster floor anchor locations from side wall according to shop drawings (NOTE: anchors will be set in concrete prior to plaster).



10 MISCELLANEOUS HARDWARE
a. Install door bumper (and hook) in proper position.



11 CARE AND MAINTENANCE OF TOILET PARTITIONS
In order to provide toilet partitions with proper care and maintenance, the following instructions must be followed:
a. All surfaces must be kept clean with water and a mild soap solution only. Abrasive cleansers should not be used.



12 INSTALLATION PILASTER SHOES
a. Side shoe over anchoring.
b. Attach using vandal resistant screw.



13 CARE AND MAINTENANCE OF WALL PARTITIONS
Under no circumstances should these components be subjected to:
- Abrasive powders or pads - Water closet cleaners - Ceramic tile cleaners
- Solutions containing more than 1% by volume of ammonia
- Solutions containing acids or lye - Solutions containing enzymes



14 CARE AND MAINTENANCE OF OVERHEAD BRACED WALL PARTITIONS
Under no circumstances should these components be subjected to:
- Abrasive powders or pads - Water closet cleaners - Ceramic tile cleaners
- Solutions containing more than 1% by volume of ammonia
- Solutions containing acids or lye - Solutions containing enzymes



1 INSPECTION
The components for this project have been custom fabricated. They are guaranteed with respect to workmanship and materials. Before beginning work, the units should be inspected. If damage occurred in transit, or if any other agencies that may have caused the damage.

2 POSITION PANEL
a. Place panel on a support 12".
b. Set it into wall brackets but do not fasten panel at this time.



3 WALL BRACKETS AND FLOOR BRACKETS
a. Review the layout drawings and package lists that have accompanied this job.
b. Establish and mark panel center line from back wall.
c. Establish and mark panel center line from side wall.
d. Establish plaster floor anchor locations from side wall according to shop drawings (NOTE: anchors will be set in concrete prior to plaster).



4 POSITION PANEL
a. Place panel on a support 12".
b. Set it into wall brackets but do not fasten panel at this time.



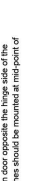
5 PILASTER PREPARATION
a. Align "U" brackets in position on rear of pilasters. Refer to layout drawing.
b. Fasten "U" brackets to pilasters with screws.
c. Pilasters at wall do not require support nuts. Pilasters at floor require support nuts (and floor fastening) as required by layout.



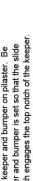
6 INSTALL PILASTERS
a. Insert the leveling bolt into the threaded insert at bottom of pilaster.
b. Level the top of all pilasters by adjusting leveling bolts.
c. Note: To determine low/high leveling bolt, find the highest point on the leveling bolt and adjust leveling bolts that will be mounted in that location. Adjust all other leveling bolts accordingly.
d. Fasten panel to wall brackets using through bolts with barrel nuts.
e. Remove panel support device.



7 SECURING PILASTERS AND PANELS
Plasters must be both plumb and level. When erecting multi-compartment installations adjustments should start with level each pilaster by adjusting support nuts to desired position.
a. Level each pilaster by adjusting support nuts to desired position.
b. Fasten "U" brackets to pilasters with screws and fasten the door opening by setting support nuts to desired position on threaded rods.
c. Establish door openings by setting support nuts to desired position on threaded rods.
d. Tighten locking nuts on top of pilaster.
e. Fasten panel to wall brackets using through bolts with barrel nuts.
f. Remove panel support device.



8 DOOR ASSEMBLY AND HANGING
a. Review the layout drawings and package lists that have accompanied this job.
b. Establish and mark panel center line from back wall.
c. Establish and mark panel center line from side wall.
d. Establish plaster floor anchor locations from side wall according to shop drawings (NOTE: anchors will be set in concrete prior to plaster).



9 DOOR ASSEMBLY AND HANGING
a. Review the layout drawings and package lists that have accompanied this job.
b. Establish and mark panel center line from back wall.
c. Establish and mark panel center line from side wall.
d. Establish plaster floor anchor locations from side wall according to shop drawings (NOTE: anchors will be set in concrete prior to plaster).



10 MISCELLANEOUS HARDWARE
a. Install door bumper (and hook) in proper position.



11 CARE AND MAINTENANCE OF TOILET PARTITIONS
In order to provide toilet partitions with proper care and maintenance, the following instructions must be followed:
a. All surfaces must be kept clean with water and a mild soap solution only. Abrasive cleansers should not be used.



12 INSTALLATION PILASTER SHOES
a. Side shoe over anchoring.
b. Attach using vandal resistant screw.



13 CARE AND MAINTENANCE OF WALL PARTITIONS
Under no circumstances should these components be subjected to:
- Abrasive powders or pads - Water closet cleaners - Ceramic tile cleaners
- Solutions containing more than 1% by volume of ammonia
- Solutions containing acids or lye - Solutions containing enzymes



14 CARE AND MAINTENANCE OF OVERHEAD BRACED WALL PARTITIONS
Under no circumstances should these components be subjected to:
- Abrasive powders or pads - Water closet cleaners - Ceramic tile cleaners
- Solutions containing more than 1% by volume of ammonia
- Solutions containing acids or lye - Solutions containing enzymes



FLOOR MOUNTED

CEILING HUNG



NOTE: FLOOR MUST BE CONCRETE

2 LAYOUT



3 WALL BRACKETS AND FLOOR BRACKETS



Before proceeding confirm that backing of walls is level. Proceed with the following steps to secure mounting of the solid compartment units.

- Drill holes for wall brackets and floor brackets.
- Insert anchoring devices in walls and secure wall brackets.
- Insert anchoring devices in floor and secure floor brackets.

1 INSPECTION

The components for this project have been custom fabricated. They are guaranteed with a 5-year warranty.

2 LAYOUT



3 WALL BRACKETS AND FLOOR BRACKETS



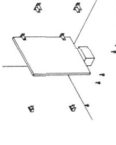
Before proceeding confirm that backing of walls is level. Proceed with the following steps to secure mounting of the solid compartment units.

- Drill holes for wall brackets and floor brackets.
- Insert anchoring devices in walls and secure wall brackets.
- Insert anchoring devices in floor and secure floor brackets.

Before proceeding confirm that backing of walls is level. Proceed with the following steps to secure mounting of the solid compartment units.

- Drill holes for wall brackets and floor brackets.
- Insert anchoring devices in walls and secure wall brackets.
- Insert anchoring devices in floor and secure floor brackets.

4 POSITION PANEL



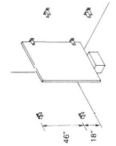
6 INSTALL PILASTERS



Pilasters must be both plumb and level.

- Plumb pilaster and fasten pilaster to panel using through bolts with washers.
- Establish bottom door opening by setting pilaster mounting to desired position.

5 PILASTER PREPARATION



Align 'U' brackets in position on rear of pilasters. Refer to layout drawing for location of support pilaster mounting bars on rear of pilasters.

- Fasten 'U' brackets to pilasters with screws.
- 'U' brackets should be prepared for wall and floor fastening as required by layout.

7 SECURING PILASTERS AND PANELS



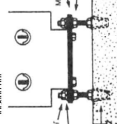
When erecting multi-compartment installations adjustments should start with the floor pilaster.

- Line up each pilaster by adjusting support nuts to desired position.
- Plumb each pilaster and fasten the pilaster mounting bar to desired position.
- Establish door openings by setting pilaster mounting nuts to desired position.
- Tighten locking nuts on top of pilaster mounting bars with barrel nuts.
- Remove panel support device.

9 DOOR ASSEMBLY AND HANGING



10 SLIDE LATCH ASSEMBLY

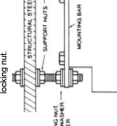


Install slide latch on door opposite the hinge side of the door. All slide latches should be mounted at mid-point of the door.

11 MISCELLANEOUS HARDWARE



12 CARE AND MAINTENANCE OF TOILET PARTITIONS



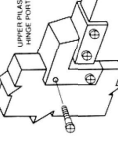
In order to provide toilet partitions with the proper care and maintenance, the following instructions must be followed:

- All surfaces must be kept clean with a mild soap solution.
- The finish must be wiped dry following cleaning.

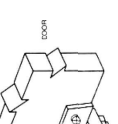
In order to provide toilet partitions with the proper care and maintenance, the following instructions must be followed:

- All surfaces must be kept clean with a mild soap solution.
- The finish must be wiped dry following cleaning.

11 MISCELLANEOUS HARDWARE

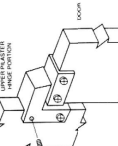


10 SLIDE LATCH ASSEMBLY



Install slide latch on door opposite the hinge side of the door. All slide latches should be mounted at mid-point of the door.

12 CARE AND MAINTENANCE OF TOILET PARTITIONS



In order to provide toilet partitions with the proper care and maintenance, the following instructions must be followed:

- All surfaces must be kept clean with a mild soap solution.
- The finish must be wiped dry following cleaning.

In order to provide toilet partitions with the proper care and maintenance, the following instructions must be followed:

- All surfaces must be kept clean with a mild soap solution.
- The finish must be wiped dry following cleaning.

12 CARE AND MAINTENANCE OF TOILET PARTITIONS



10 SLIDE LATCH ASSEMBLY



Install slide latch on door opposite the hinge side of the door. All slide latches should be mounted at mid-point of the door.

11 MISCELLANEOUS HARDWARE



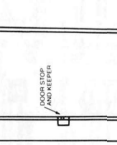
12 CARE AND MAINTENANCE OF TOILET PARTITIONS



In order to provide toilet partitions with the proper care and maintenance, the following instructions must be followed:

- All surfaces must be kept clean with a mild soap solution.
- The finish must be wiped dry following cleaning.

11 MISCELLANEOUS HARDWARE

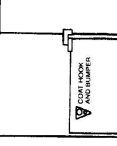


10 SLIDE LATCH ASSEMBLY



Install slide latch on door opposite the hinge side of the door. All slide latches should be mounted at mid-point of the door.

12 CARE AND MAINTENANCE OF TOILET PARTITIONS



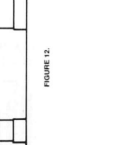
In order to provide toilet partitions with the proper care and maintenance, the following instructions must be followed:

- All surfaces must be kept clean with a mild soap solution.
- The finish must be wiped dry following cleaning.

In order to provide toilet partitions with the proper care and maintenance, the following instructions must be followed:

- All surfaces must be kept clean with a mild soap solution.
- The finish must be wiped dry following cleaning.

12 CARE AND MAINTENANCE OF TOILET PARTITIONS

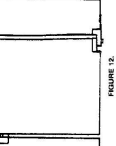


10 SLIDE LATCH ASSEMBLY



Install slide latch on door opposite the hinge side of the door. All slide latches should be mounted at mid-point of the door.

11 MISCELLANEOUS HARDWARE



In order to provide toilet partitions with the proper care and maintenance, the following instructions must be followed:

- All surfaces must be kept clean with a mild soap solution.
- The finish must be wiped dry following cleaning.

In order to provide toilet partitions with the proper care and maintenance, the following instructions must be followed:

- All surfaces must be kept clean with a mild soap solution.
- The finish must be wiped dry following cleaning.