

# Ultrasound Simulation

realistic, customizable ultrasound simulation even in mobile settings



## VausSim™ Ultrasound Simulation

Create your own ultrasound simulator. The VausSim™ ultrasound simulator, thanks to a network of high-fidelity sensors, makes the skin of any simulator or manikin ultrasound scannable even in mobile settings. This simulator allows the instructor to independently create, through the use of a powerful editor, a customized and exclusive casebook of real US images/videos/volumes. The instructor is able to change the pathological ultrasound status of the patient in real-time during the scenarios. VausSim™ is also completely independent and not sensitive to magnetic field, and guarantees continuous functioning, even during transportation and movement of the patient.



### SMART STAT, SMART STAT Basic, and STAT training options:

- Software that includes:
  - An Emergency module with 8 different cases FAST, eFAST, and RUSH acquired and validated by universities and scientific associations
  - A realistic “user interface” with integrated controls for the modulation (contrast, brightness, etc.) or the analysis (freeze, measurements, etc.) of the image
  - A user-friendly, browser-based “instructor interface” that can be used on a PC, tablet, or smartphone connected via network to the user interface and allows the use of VausSim™ during advanced simulation scenarios
- 3 different realistic probes (curved, linear, and phase array), including pressure sensor and a bright LED for orientation of probe
- Set of 18 sensors that can be placed anywhere on the simulator directly by the instructor in order to create new ultrasound scanning points
- Software license
- User manual
- Transport case

Available bundled with new simulation systems or as an upgrade to existing SMART STAT (101-8000U), SMART STAT Basic (101-8002U), SMART STAT Complete (101-8001U), or STAT simulators (101-300U and 101-310U).

## STAT with VausSim™

Includes STAT manikin (101-310U), plus the VausSim™ ultrasound simulator described above.

**101-7530U** Sh. wt. 125 lbs.

## SMART STAT with VausSim™

Includes SMART STAT manikin (101-8000U), plus the VausSim™ ultrasound simulator described above.

**101-7510U** Sh. wt. 145 lbs.

## Overlays with VausSim™

VausSim™ upgrade kit for existing manikins.  
Sh. wt. 10 lbs.

**101-7570U** For STAT Manikins

## SMART STAT Basic with VausSim™

Includes SMART STAT Basic manikin (101-8002U), plus the VausSim™ ultrasound simulator described above.

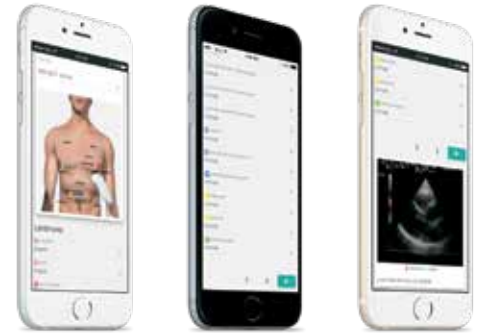
**101-7520U** Sh. wt. 135 lbs.

## SMART STAT Complete with VausSim™

Includes SMART STAT Complete manikin with iPad® (101-8001U), plus the VausSim™ ultrasound simulator described above.

**101-7500U** Sh. wt. 192 lbs.

**101-7560U** For Basic SMART STAT Manikins



**101-7550U** For SMART STAT Manikins

## VausSim™ Kit

• Standalone option can be used on any manikin or standardized patient

### Options for VausSim™ Kit:

- Set of 18 sensors that can be placed anywhere on the simulator directly by the instructor in order to create new ultrasound scanning points
- A realistic "user interface" with integrated controls for the modulation (contrast, brightness, etc.) or the analysis (freeze, measurements, etc.) of the image
- A user-friendly, browser-based "instructor interface" that can be used on a PC, tablet, or smartphone connected via network to the user interface and allows the use of VausSim™ during advanced simulation techniques
- 3 different realistic probes (curved, linear, and phase array), including pressure sensor and a bright LED for orientation of probe

### What's included:

- End user can load their own library of video and images to support the location they want to train on
- Software license

**101-7540U** Sh. wt. 5 lbs.

### Scenario set options (8 cases each)

**600-7600U** Abdominal Module

**600-7610U** Pleural Module

**600-7620U** Cardiac Module

\*iPad® is a trademark of Apple, Inc., registered in the U.S. and other countries.



Update your existing SMART STAT with the VausSim™ Kit standalone option

## ECLSim™ Screen Based Extracorporeal Life Support Simulator

ECLSim software, lifetime license key and digital user manual

- Installation support and remote training
- Lifetime free software updates and upgrades

### System Requirements:

- 15" monitor with 1024 x 768 resolution
- 8GB RAM
- Language: English
- CPU: Intel Core i-5
- Windows 10 Pro (64 bit)
- 128 GB hard drive

**ECL** Sh. wt. 6 lbs.



### VausSim™ Cardiac I Module

**VAUCARI**

### VausSim™ Pediatric I Module

**VAUPEDI**

### VausSim™ OB/GYN PPHI Module

**VAUPPHI**

### VausSim™ RFID Tags, 30-Pack

**VAU2ORFID**

### VausSim™ Pleural I Module

**VAUPLI**

### VausSim™ Emergency I Module

**VAUEMSI**

### VausSim™ Intrapartum I Module

**IUSIMI**

### VausSim™ Simulated Reference System Module

**VAURRS**

### VausSim™ Abdominal I Module

**VAUABDI**

### VausSim™ Emergency Covid I Module

**VAUCOVI**

### VausSim™ Intrapartum 2 Module

**IUSIM2**

## VausSim™ Simulated Ultrasound Convex Probe

- 8 in. x 8 in. x 4 in.

**VAUCXP** Sh. wt. 2.2 lbs.

## VausSim™ Simulated Ultrasound Phase Array Probe

- 20 in. x 16 in. x 8 in.

**VAUPAP** Sh. wt. 11 lbs.

## VausSim™ Simulated Ultrasound Linear Probe

- 20 in. x 16 in. x 8 in.

**VAULRP** Sh. wt. 11 lbs.