



Professional Card Design Software

# CardStudio™

Setup and Install Guide

Susan  
Long

EMPLOYEE # 743921



WorldCorp





## Introduction

*CardStudio* is a full-feature card design and printing software application with complete capabilities for card layout and design. It is provided in three editions: Classic, Standard, and Professional.

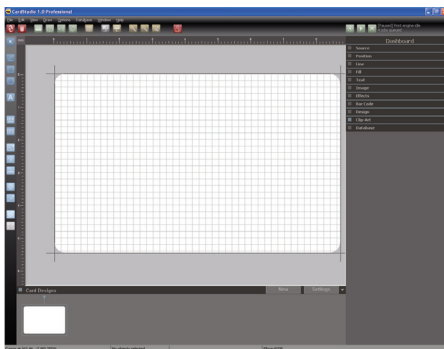
All three editions integrate the required features for ID Card design and production.

**Classic:** Main application for card design and printing. Includes easy-to-use card template designs.

**Standard:** Adds the ability of printing and workflow options using a CSV or Microsoft Excel Database connection (included with *CardStudio* design templates).

**Professional:** Allows full internal database and external management via ODBC drivers as well as Contact, Contactless, UHF, and Biometric encoding. Also included are advanced print and security features and functionality.

*CardStudio* software drastically reduces the time necessary to create professionally designed cards with high-quality graphics.



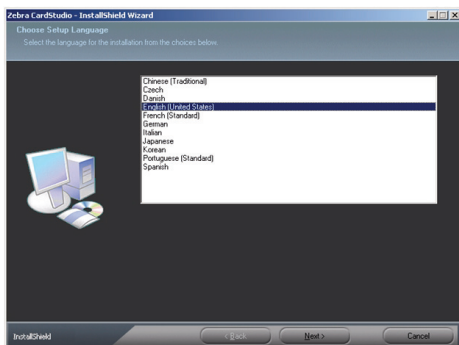
Easy-to-use template designs include a collection of standard card design backgrounds, logos, and design elements for quickly creating custom cards.

Simply edit text, data, and graphics of pre-designed cards or build your own unique card design.

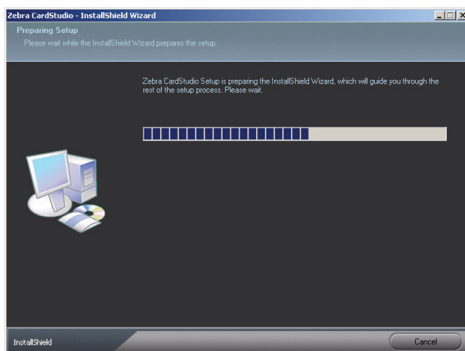
To install *CardStudio*, follow the steps starting on the next page.

## Installation

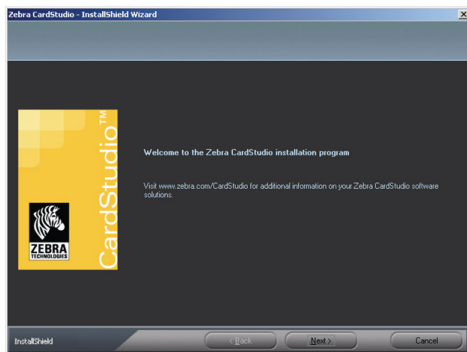
- Step 1. Insert the Installation CD into the CD drive of your computer. The CD should start automatically. If the CD does not start, go to *Start > Run*; and type in `D:\SETUP.EXE` (where D: is the drive letter of your CD drive).
- Step 2. The **InstallShield Wizard** window will open. Select the appropriate language; and click on the **Next** button.



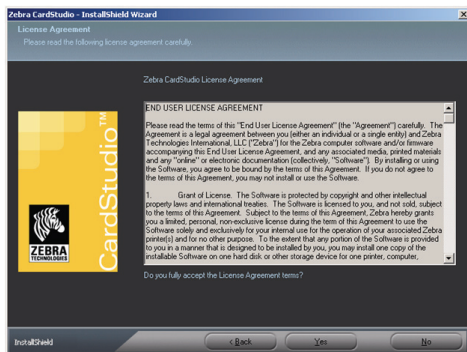
- Step 3. Observe the *Preparing Setup* window.



Step 4. The **Welcome** window will open. To proceed with the installation, click the **Next** button.

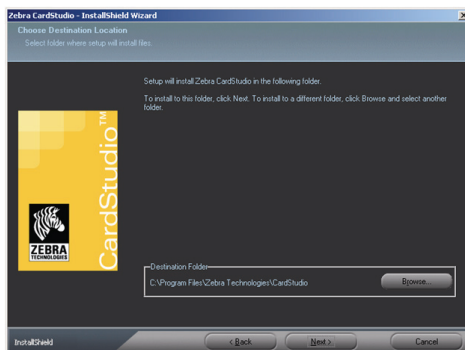


Step 5. This will bring up the **License Agreement** window. If you fully accept the License Agreement terms, click the **Yes** button.

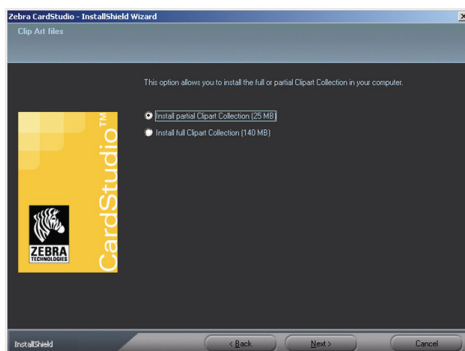


Step 6. This will bring up the **Choose Destination Location** window.

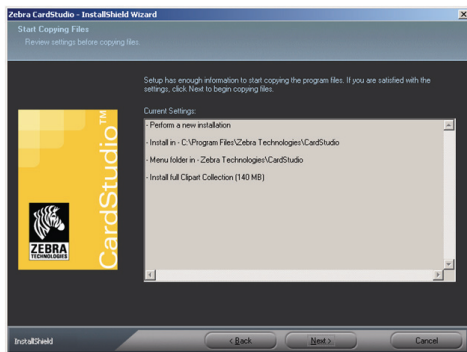
- To *accept* the default destination location where setup will install the files, click the **Next** button.
- To *select* a destination location, click on the **Browse** button ; select the folder where setup will install the files; and then click the **Next** button.



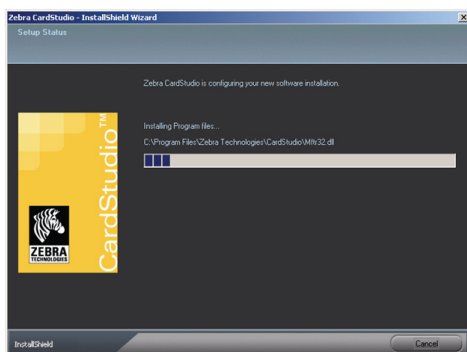
Step 7. This will bring up the **Clip Art files** window, which allows you to install the full or partial Clipart Collection.



- Step 8. This will bring up the **Start Copying Files** window. If you are satisfied with the settings, click the **Next** button.

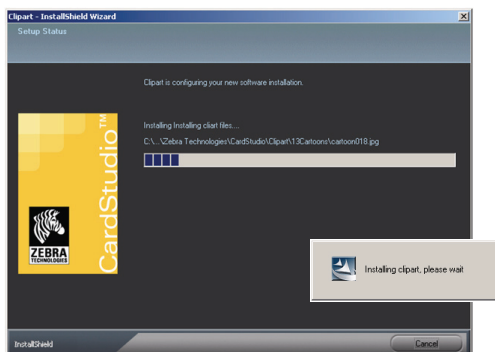


- Step 9. Observe the **Setup Status** window for program files.

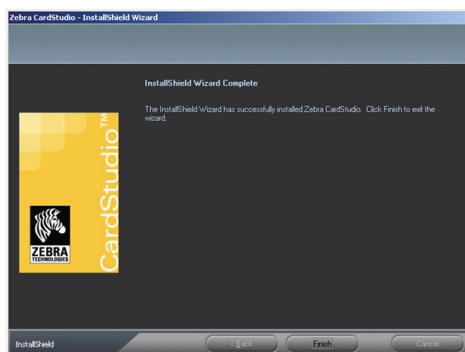




Step 10. Observe the **Setup Status** window for clipart files.



Step 11. When the **InstallShield Wizard Complete** window appears, click the **Finish** button.



Step 12. This completes *Zebra CardStudio* installation.







**Corporate Headquarters**

+1 800 423 0442  
inquiry4@zebra.com

**Asia-Pacific Headquarters**

+65 6858 0722  
apacchannelmarketing@zebra.com

**EMEA Headquarters**

+44 (0)1628 556000  
mseurope@zebra.com

**Latin America Headquarters**

+1 847 955 2283  
inquiry4@zebra.com

Other Locations

**USA:** California, Georgia, Rhode Island, Texas, Wisconsin

**Europe:** France, Germany, Italy, Netherlands, Poland, Spain, Sweden

**Asia Pacific:** Australia, China, India, Japan, South Korea

**Latin America:** Argentina, Brazil, Florida (USA), Mexico

**Africa/Middle East:** Russia, South Africa, United Arab Emirates

[www.zebra.com](http://www.zebra.com)

P1031323-001

©2010 ZIH Corp. All rights reserved.