

White Paper

What's New in BarTender v9.3

Improved Print-Time Data Entry Forms,
Powerful New Weighing Scale Support,
Improved IBM WebSphere Functionality,
Serial Port Triggers and more!

Overview of BarTender v9.3	6
Some BarTender Editions Renamed; Some Features Moved	6
Price of RFID Support Lowered.....	6
Windows 2000 No Longer Supported.....	6
Easier and More Powerful Print-Time Data Entry Forms.....	6
Industry-Leading Weighing Scale Support.....	7
Improved IBM WebSphere Support in Commander.....	9
Other Commander Improvements.....	9
.NET SDK Assemblies are now Strong-Named.....	9
New Human Readable Support for 2D Bar Codes	9
“On-the-Fly” Object Automation	10
New Document-Level VB Script Support.....	10
Distributed and Orphan Alignment Options for Paragraphs.....	10
GHS Labeling	10
Numerous User-Interface Enhancements	10
Improvements to BarTender’s Files and Folders Setup.....	11
New Printer License "Grace Period" and Usage Metering.....	11
Some BarTender Editions Renamed; Some Features Moved	12
Edition Summary	12
Basic Edition.....	13
Professional Edition	13
Automation Edition.....	13
Enterprise Automation Edition	13
RFID Price Lowered	13
RFID now Available at a new, lower Price	13
Windows 2000 No Longer Supported.....	14
Easier, More Powerful Print-Time Data Entry Forms	14
Quick Review of Data Entry Forms	14
Now Design Data Entry Forms Independently of the Label.....	14
Linking Data Entry Controls with your Label Design	15
New Toolbox for Data Entry Forms.....	15
Object Creation	16
Sub-string Linking	16
New Controls for Data Entry Forms.....	17

Picture Objects.....	17
Radio Buttons.....	17
Check Boxes.....	17
Combo List Boxes.....	17
Background Color.....	18
Separate Display Values vs. Data Values.....	18
Add your own Pop-up Tips for Form Controls.....	19
Write your own Help Text for Data Entry Forms.....	19
Define Tab Order.....	19
Built-in Text Labels for Most Controls.....	20
New “Snap To” Positioning for Text Labels.....	20
Improved Text Objects.....	21
Industry-Leading Weighing Scale Support.....	21
Easy “Drag and Drop” Creation on Data Entry Forms.....	21
Eight Scale Displays to Choose From.....	22
Links the Same way as other Data Entry Objects.....	23
Selecting the Scale to Read From.....	23
Numerous Predefined Scale Configurations.....	23
Also Supports Unlisted Scales.....	24
Tare Options.....	24
Using the Tare Button and/or Clear Tare Button on the Scale Display’s Toolbar	24
Data Sourcing the Tare Weight.....	25
Improved IBM WebSphere Support in Commander.....	25
Previous Support was Unidirectional.....	25
New XSL Transforms for WebSphere Sensor Events.....	26
New Sample Task Lists for WebSphere Sensor Events.....	26
Other Commander Improvements.....	26
New “Send to Web Server” Command.....	26
New Serial Port Triggers in Commander.....	26
New Commander Variables.....	27
Bar Code Improvements.....	27
New Human Readable Support for 2D Bar Codes.....	27
Split Display Above and Below GS1 Composite Bar Codes.....	28
New Object String Data Source Options.....	28
Support for New GS1 Application Identifiers.....	28
Improved Object Automation.....	28

Programmatically Modifying Label Object Properties	29
On-the-fly Modification of Object Properties	29
New Document-Level VB Script Support	29
List of New Document-Level Events.....	29
Support for Data-Sourced VB Script.....	30
.NET SDK Assemblies are now Strong-Named	30
New Alignment Options for Paragraph Text Objects	31
Distributed Alignment.....	31
Orphan Control for Justified or Distributed Alignment.....	32
The “Auto” Orphan Alignment Option	32
Sample GHS Label Format	33
Prints one or more GHS Symbols.....	33
Numerous User-Interface Improvements	33
Overview	33
Automatic Switching to Large Icons on Toolbar	34
Manually Controlling Toolbar Resolution	34
About Lower Resolution Monitors.....	35
New “Insert Symbols or Special Characters” Dialog.....	36
Font Toolbar Now Displays Font Sample	37
Ruler and Grid Improvements	37
Object Movement Improvements.....	38
Object Creation Improvements	38
Zoom Improvements	38
New “Fit all Objects in Window” Function	39
New Click-Wheel Support for Zoom.....	39
Pan Improvements.....	39
Panning Up and Down	39
Panning Left and Right.....	39
Panning Using the Arrow Keys.....	39
Status Bar Improvements.....	40
Improvements to BarTender’s Files and Folders Setup	40
Import and Export Configuration Settings.....	40
New Printer-Limit-Exceeded "Grace Period" and Usage Metering.....	40
Automation Editions Now Regulate Weekly Printer Usage	41

A More Forgiving Approach to Printer License Violation..... 41
Understanding the 30-day Printer-Limit-Exceeded Grace Period 41
 Initiating the Printer-Limit-Exceeded Grace Period..... 41
 Temporary Access to Twice as Many Printers!..... 42
 Resetting the Grace Period..... 42
 Expiration of the Grace Period 42

Overview of BarTender v9.3

This section provides a condensed overview of the many improvements introduced with BarTender version 9.3 upgrade. Extended details (including numerous graphics) are found later in this same document.

Some BarTender Editions Renamed; Some Features Moved

New names for two editions of BarTender make it easier for users to figure out which edition they need. The new names are:

- **Automation edition:** The editions formerly called “Enterprise” and “RFID Enterprise” have been combined into what is now called the “Automation” edition.
- **Enterprise Automation edition:** The edition formerly called “Enterprise Print Server” is now called “Enterprise Automation.”

In addition, the “lite” version of Printer Maestro is no longer included with the Professional edition.

Price of RFID Support Lowered

There is no longer a separate edition named specifically for RFID. Instead, RFID support is now included in the Automation edition at prices (depending on the number of printers used) close to what we formerly charged for the previously-named “Enterprise” edition. (RFID continues to be supported by the Enterprise Automation edition, which was previously called Enterprise Print Server.)

Windows 2000 No Longer Supported

BarTender 9.3 cannot be installed on or used with Windows 2000. (BarTender editions up through version 9.2 continue to support Windows 2000.)

Easier and More Powerful Print-Time Data Entry Forms

We have simplified and improved the design of print-time data entry forms. We've also added several new types of data entry objects, including weighing scales, new types of list controls, radio buttons, checkboxes, and pictures.

Design Data Entry Forms Independently of the Label

You no longer need to design labels before designing your data entry forms. You can now design in whatever order you prefer and “link” them later.

New Toolbox

The data entry form designer now includes a tabbed toolbox somewhat similar to the toolbox that has been supported by the BarTender label designer for years. This makes it quicker and easier to create data entry objects and link them with label data.

New Controls for Data Entry Forms

You can now increase the power and usability of your data entry forms with:

- Weighing Scales
- Picture Objects
- Radio Buttons
- Checkboxes
- Additional types of List Boxes and Dropdown Lists

Built-in Text Labels for Most Controls

Now, when you create controls on a data entry form, a built-in text label object is automatically created next to each one, saving you the trouble of having to create them separately.

Add your own Pop-up Help for Form Controls

Create help text for individual form controls that automatically pop-up when you hover over the control.

Write your own Help Text for Data Entry Forms

You can also author help for the form (rather than just individual controls) and have it pop up when you press the F1 (help) key.

Define Tab Order

You can now explicitly set the order in which the controls on your data entry forms ask for data. (Previously, the order was determined by their location on the form.)

Industry-Leading Weighing Scale Support

BarTender 9.3 introduces by far the most powerful and versatile support for weighing scales available in any label software package. (Available with Automation and Enterprise Automation editions.)

Easy “Drag and Drop” Creation

Add weighing scales to your data entry forms using the same easy “drag and drop” motions you use for creating any other object on a form or label.

Eight Scale Displays to Choose From

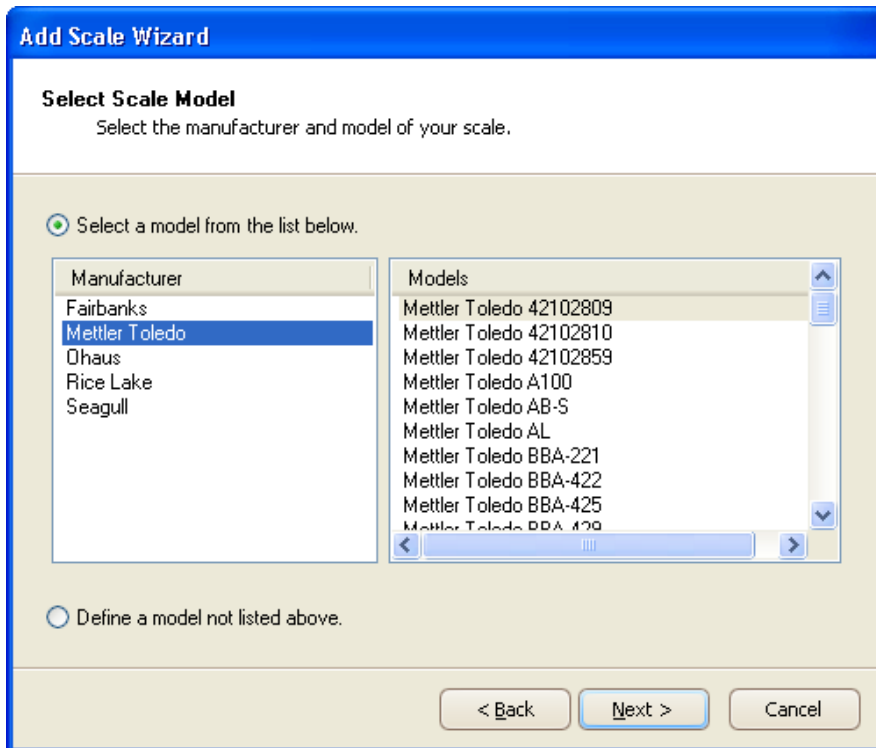
Choose from eight varieties of scale display, each of which can be customized for color, size, maximum display value, custom toolbar buttons and extra display values.



BarTender supports eight types of scale displays, each of which has numerous customizable parameters.

Numerous Predefined Scale Configurations

BarTender's Add Scale Wizard has a generous predefined list of major scale manufacturers and models. So you often need to do nothing more than select your scale from the list and you're done. If your scale isn't listed, options are provided for defining your scale's communication protocols within the Add Scale Wizard. (With other label software companies, this second method is all that they offer.)



The Add Scale Wizard contains a sizeable, predefined list of scale manufacturers and models.

Tare Options

The “tare” weight is the weight that you subtract from the gross weight to account for containers and packaging in order to calculate the net weight. BarTender supports manual “taring” of the scale from within BarTender, as well as automatic data sourcing of different tare values for different objects to be weighed.

Improved IBM WebSphere Support in Commander

BarTender’s Commander companion application has offered an IBM-certified WebSphere Sensor Events printing interface for many years. That support is now bidirectional. Commander also now provides three new XSL transforms and sample task lists specific to supporting WebSphere Sensor Events.

Other Commander Improvements

Additional Commander improvements include:

New “Send to Web Server” Command

Commander now offers a new **Send to Web Server** command that can send data to a web server using any of five HTTP Request methods.

New Serial Port Triggers

Commander now adds support for serial port triggers to the large variety of trigger types that it supports. Among other uses, this makes it easier to set up automated scale applications.

New Commander Variables

The introduction to Commander of support for variables means you can store values into a single location and reference them from multiple different Commander commands, instead of your having to copy the same value again and again into each of the commands.

.NET SDK Assemblies are now Strong-Named

New support for strong names by the BarTender .NET SDK assemblies allows the assemblies to be stored in the .NET Global Assembly Cache (or GAC). This allows for easy reference by multiple user applications (including strong-named applications).

New Human Readable Support for 2D Bar Codes

Human readable characters are now supported for 2D bar codes in the same way that they are for linear (or one-dimensional) bar codes. In addition, a new **Split** option allows for automatic placement of the primary data above the bar code and the secondary data below when using GS1 Composite bar codes.

“On-the-Fly” Object Automation

BarTender 9.3 adds automation commands to support changing an object's position, size, color, and visibility under programmatic control. ActiveX Automation can modify label formats at the beginning of a label job. However, when the object automation commands are executed from within BarTender using VB Script, they can modify the label format *right in the middle of a label print job*.

New Document-Level VB Script Support

BarTender's VB Script functionality has been enhanced to support the execution of document-level events, including file open, close, save and a variety of print-time events.

Distributed and Orphan Alignment Options for Paragraphs

Version 9.3 adds support for Distributed paragraph alignment, which is frequently used with Japanese, Korean and Chinese text. Support for orphans has also been added.


GHS Labeling

A sample label format is included that will assist users in creating GHS (Globally Harmonized System for Classification and Labeling of Chemicals) compliant labels.

Numerous User-Interface Enhancements

A large number of user-interface enhancements have been added. Considered individually, many of the improvements are minor. However, considered altogether, this is the most significant upgrade in usability we've introduced in years.

New, More Powerful Special Character Insertion Dialog

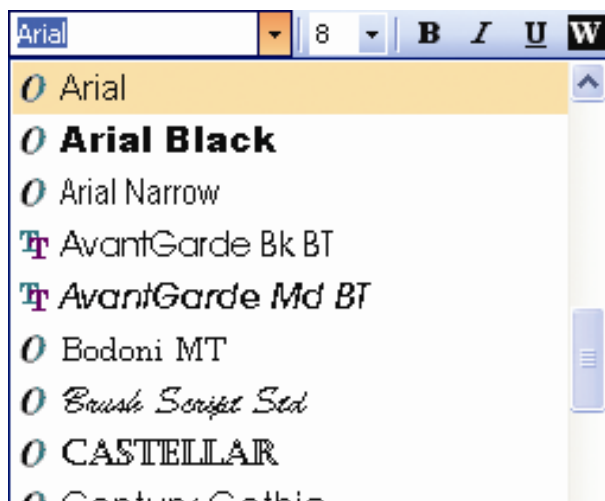
Until now, BarTender had a right-arrow button next to some edit boxes that accessed a dialog used to enter control characters only. The symbol on that button has now been changed to an Omega character  and the button now brings up the brand new **Insert Symbol or Special Characters** dialog, which allows you to insert literally *any* character available within the selected font.

Font Toolbar Now Displays Font Sample

With BarTender version 9.3, when you drop down the list of fonts on the font toolbar, each font name is now displayed using that font (instead of all of the names being displayed in the same default font).

Ruler and Grid Improvements

Right-clicking on either of the on-screen rulers along the perimeter of the label design



area now brings up a context menu that allows you to make common changes, such as selecting the units of measure. This is quicker than having to find the options in the **View** menu.

Automatic Switching to Large Icons on Toolbar

To take advantage of the increasing popularity of higher resolution monitors, BarTender can automatically switch to using larger 32 x 32 pixel icons in its main Toolbars when you have a large-enough display. The larger, higher-resolution icons are more attractive and more-clearly describe the functions that they represent.

Object Movement Improvements

When moving very small objects in the label design area, the square handles could seem so large relative to the image that they obscured the view of the selected object. Now, the handles are automatically hidden while you move the object.

Zoom and Pan Improvements

Simpler, quicker **Zoom In** and **Zoom Out** functions have been introduced. Some additional methods of panning have also been introduced. Also, if your mouse has a click-wheel, you can now easily zoom and pan in the design area without pushing any toolbar buttons at all. Finally, when you don't care about seeing the surrounding blank area of your label, there is a new **Fit all Objects in Window** function that automatically zooms in as far as you can on all of your objects.

Status Bar Improvements

The status bar located just below the design area now displays a greater variety of data and provides pop-up tips. In addition, the data in the status bar is no longer simply display-only – you can now double-click it to edit the values.

Improvements to BarTender's Files and Folders Setup

Enhancements to the **File and Folder Setup** dialog in BarTender and Commander make it easier to use. Also, these settings are now saved globally for access by all users on a given PC, instead of applying only to the active user. You can also import and export the settings to and from other copies of BarTender and Commander.

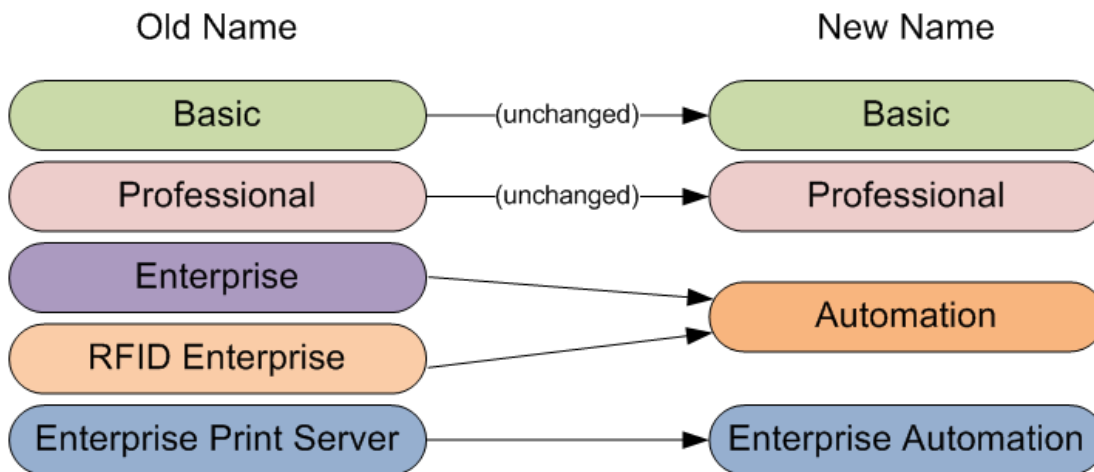
New Printer License "Grace Period" and Usage Metering

BarTender's Seagull License Server (SLS) now tracks printer usage based on the total number of printers used per week, instead of per 24 hours. However, in the event that a user exceeds his or her maximum allowable number of printers, users have a full 30 days in which to either bring their BarTender printer usage back into compliance or purchase a larger printer license.

Some BarTender Editions Renamed; Some Features Moved

New names for two editions of BarTender make it easier for users to figure out which edition they need.

Prior to BarTender version 9.3, there were five editions, as listed in the “Old Name” column in the illustration below. Three of the five editions had the word “Enterprise” in them, which led to some confusion. Two of these editions have now been renamed and one of them has been eliminated. This leaves the four editions listed in the “New Name” column.



With BarTender 9.3, RFID functionality is now available at the price of the previously-named “Enterprise” edition (now called “Automation”).

The key difference in the new naming structure is:

It is now clearer that, unlike Basic and Professional (which are for “stand-alone” use), the most powerful two editions can be “automated” (that is, controlled from within other software).

In addition, it now becomes clearer that the Enterprise Automation edition builds upon the functionality of the Automation edition. It does this by adding powerful management functions, centralized printing, and other features often needed by large “Enterprise” companies. (All four editions continue to be fully network compatible.)

Edition Summary

The following highlights important information about the four editions available with BarTender version 9.3. (For more details on the features available in each edition, please visit the interactive “[Features and Editions Comparison Chart](#)” on our web site.)

Basic Edition

No changes.

Professional Edition

The “lite” version of Printer Maestro is no longer included in the Professional edition. In order to benefit from this enterprise print management utility, you must use one of the two Automation (formerly “Enterprise”) editions.

Automation Edition

The Automation edition is functionally equivalent to our previously-named RFID Enterprise edition, but it is priced similarly to our old Enterprise edition. This is our entry level edition for automated printing. (That is, this is the least expensive version of BarTender that can be controlled from within other software.)

Enterprise Automation Edition

The Enterprise Automation edition is functionally equivalent and priced similarly to our previously-named Enterprise Print Server edition. This is our highest edition level, with numerous functions designed for large “Enterprise” printing environments. This edition also offers a variety of features dedicated to meeting the requirements of highly regulated environments, such medical and pharmaceutical, and highly secure environments, such as military and chemical. (This edition continues to provide RFID support.)

RFID Price Lowered

With the release of BarTender version 9.3, there is no longer a separate edition named specifically for RFID.

RFID now Available at a new, lower Price

The RFID support previously available in what had been the “RFID Enterprise” edition is now included in the Automation edition at prices (depending on the number of printers used) close to what we formerly charged for the previously-named “Enterprise” edition. The effective result is that RFID support is now available at a significantly lower price than before. (The “Enterprise Automation” edition, formerly called “Enterprise Print Server,” continues to provide RFID functionality.)

Windows 2000 No Longer Supported

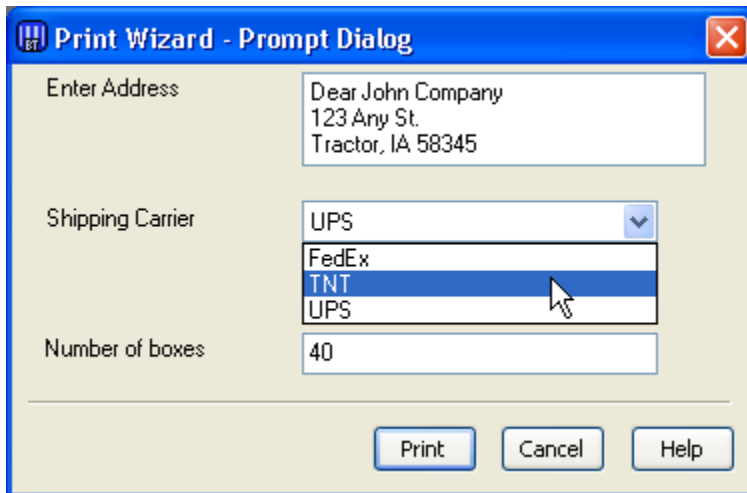
BarTender 9.3 cannot be installed on or used with Windows 2000. (BarTender editions up through version 9.2 continue to support Windows 2000.)

Easier, More Powerful Print-Time Data Entry Forms

We have simplified and improved the design of print-time data entry forms. We've also added several new types of data entry objects (also called "controls"), including radio buttons, checkboxes, pictures, and weighing scales.

Quick Review of Data Entry Forms

BarTender has long had the ability to optionally pop-up data entry forms at print time to request data from users prior to printing. This data can be typed in (with a keyboard) or scanned (with a bar code reader) into data entry fields for one or more label objects prior to printing the label. Labels can consist completely of data entered at print-time or they can combine that data with data read from a database or file.



A simple data entry form designed with an older version of BarTender.

Now Design Data Entry Forms Independently of the Label

Until now, the design of label objects always had to precede the design of data entry forms. This is because, in order to create a data entry input control on the form, you first had to:

1. Create a text or bar code object in the label design area.
2. Double-click on the object in order to bring up the **Modify Selected Object** dialog.

3. Click on the **Data Source** tab, the **More Options** button, and then the **Prompting** tab.
4. Enable the **Prompt at Print-Time** checkbox
5. Click **Ok**.

This is nowhere near as long a process as the above sequence suggests and only takes a few seconds. Still, this used to be the only way to create objects in the data entry form to prompt for data at print time. BarTender version 9.3 continues to fully support this established design method. However, there are now additional options that many users will find more intuitive.

Linking Data Entry Controls with your Label Design

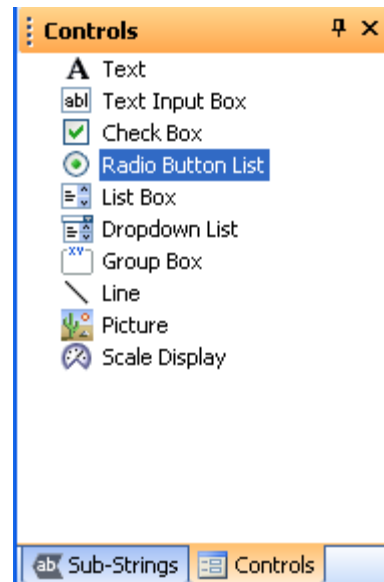
The key to designing data entry forms separately from your label objects is the new ability to link the data entry objects with data sub-strings from your labels any time that you want. There are now two ways to do this. In addition to the traditional double-click method already described above for use in the label design area, a nearly identical method is now also available in the data entry form designer. (Similarly, you just: 1. Double-click on the data entry control, 2. Select the **Linked Sub-String** tab and 3. Select the desired sub-string from the list.)

Even easier than these dialog-based data linking methods is the new, very user-friendly “drag and drop” method supported by the data entry forms designer’s new toolbox. (Please see next section.)

New Toolbox for Data Entry Forms

In the data entry form designer, there is now a tabbed toolbox that somewhat resembles the toolbox long supported by the BarTender label designer. It is, however, especially made for creating controls on data entry forms and linking those controls to label objects and data fields. This new toolbox contains two tabs:

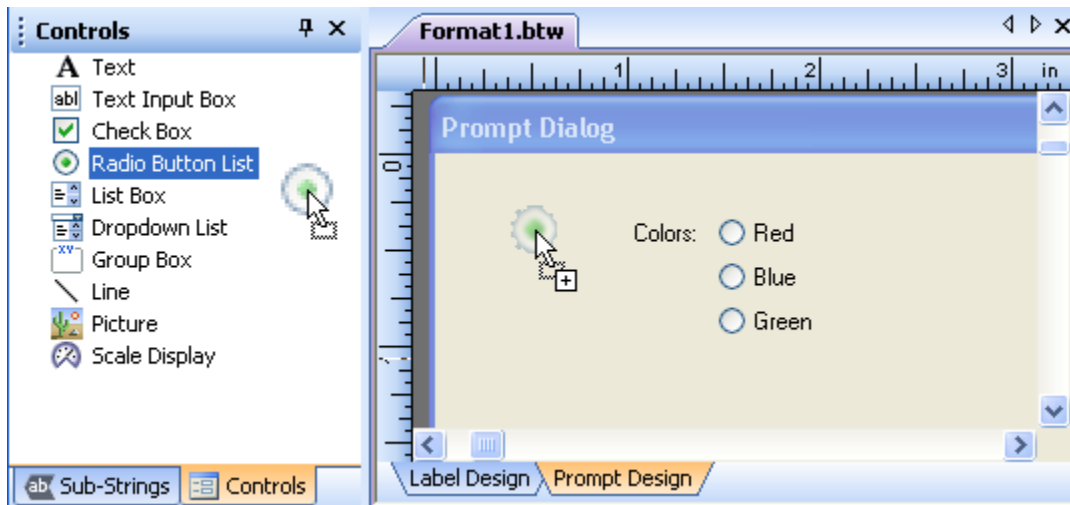
- Controls
- Sub-Strings



The new toolbox in the data entry form designer makes it easier to create controls and link them to label objects and data fields.

Object Creation

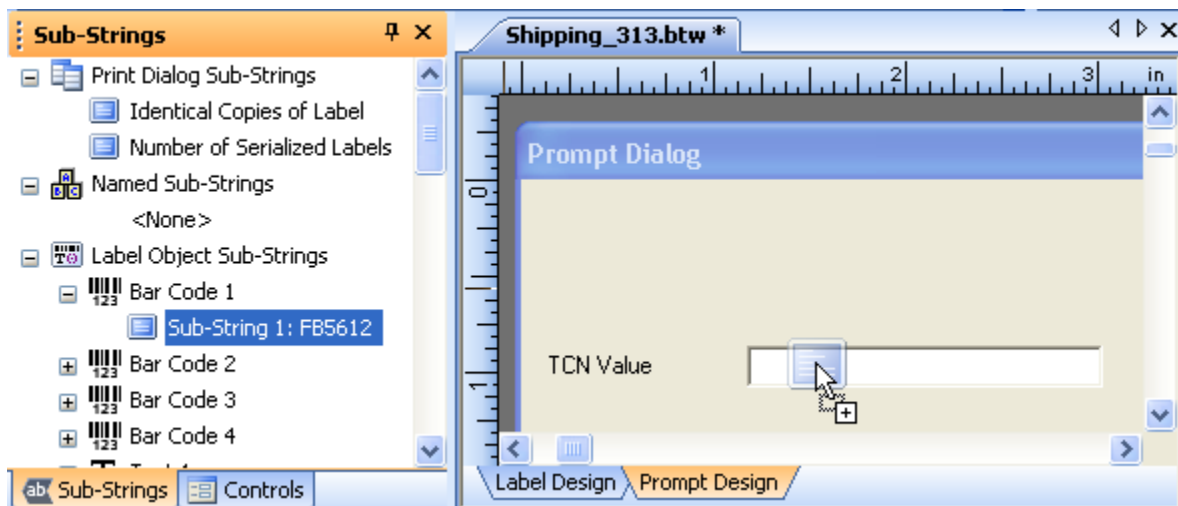
Using the new **Controls** pane, you can now create data entry controls on your data entry form designer using a simple drag and drop mouse motion.



Simply drag new objects from the Controls tab into the data entry form design area.

Sub-string Linking

Using the **Sub-Strings** tab of the new toolbox, you can “drag-and-drop” to link data sub-strings already defined in the label design area with data entry controls you have added to your data entry form. When you then enter values into data entry controls at print-time, those values set the contents of the sub-strings that they are linked to, and therefore affect the appearance of the associated label objects as they print.



With BarTender 9.3, you can associate any sub-string with any form control using simple drag-and-drop motions.

New Controls for Data Entry Forms

BarTender version 9.3 adds several new control types to improve the quality and usability of your data entry forms.

Picture Objects

You can now add picture objects to your data entry forms in order to communicate important visual information to data entry operators (or just make your forms look nicer). As with the label designer, graphics can be either linked or embedded.

Radio Buttons

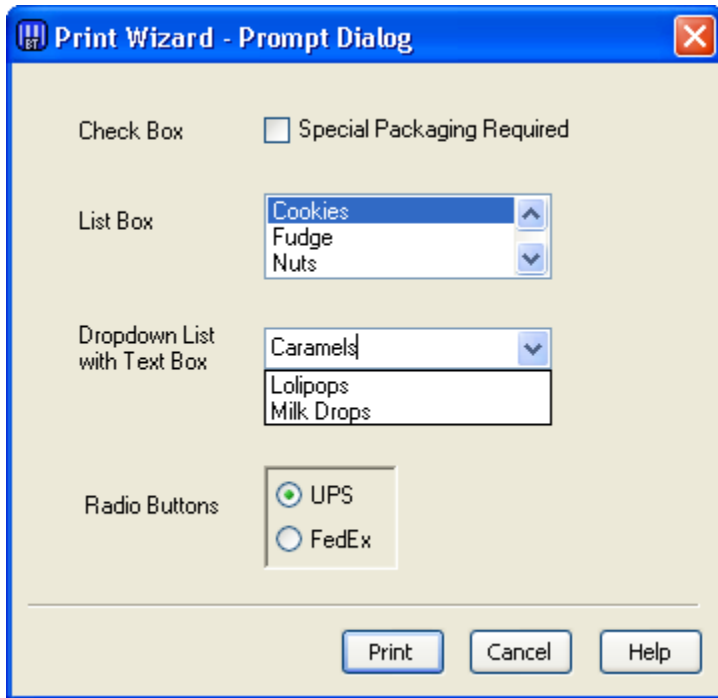
Radio buttons are useful for speeding up data entry and reducing errors when the number of allowable data entry options is relatively small.

Check Boxes

Check boxes are great for simple “Yes/No” and “On/Off” (and similar) types of data entry.

Combo List Boxes

BarTender’s data form designer has supported “dropdown lists” and “list boxes” for some time. Now, version 9.3 adds support for “combo list boxes,” which is basically a combination of a text box on top of a list box. To use the combined feature, double click on a list box, select the **List Box** tab, and check the box for **Add Text Input Box on top**.



The data entry form designer in BarTender 9.3 supports a greater variety of list controls.

Background Color

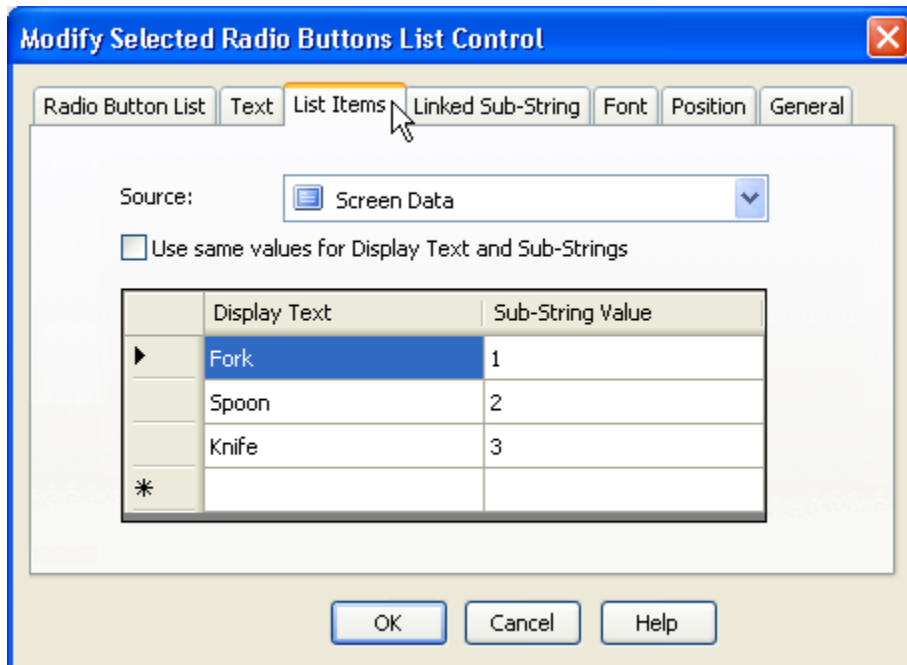
BarTender 9.3 adds the ability to set the background color for a control. This allows you to optionally bring attention to important controls in a data entry form (or just define some color because you think it “looks nice.”)

Separate Display Values vs. Data Values

For the various types of list controls, radio buttons and checkboxes, the data entry form can now show a “display value” to the user performing the data entry and source a different value to the data sub-string used on the label. For example, suppose that you have three radio buttons and you want to display these values:

- Fork
- Spoon
- Knife

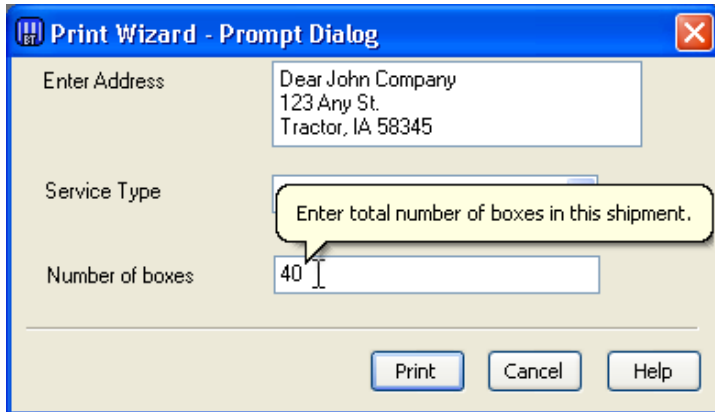
With version BarTender 9.3, you can now optionally supply values such as “1”, “2”, or “3” to the linked sub-string instead of the above sample text strings. Using the **List Items** tab of the form object's **Modify Selected Control** dialog, you will see options both for the text to be displayed on the data entry form and the corresponding text or value that is to be supplied to the linked sub-string.



You can now maintain separate display and data values for list controls.

Add your own Pop-up Tips for Form Controls

Controls on data entry forms now have an option called **Show comments as a pop-up tip**. Located in each control's **General** tab, this option causes text that has been entered into the **Comment** text option be available as a pop-up tip for the associated control when executing the data entry form. When users hover their mouse cursor over such a control when being prompted by a data entry form, the tip automatically pops up.



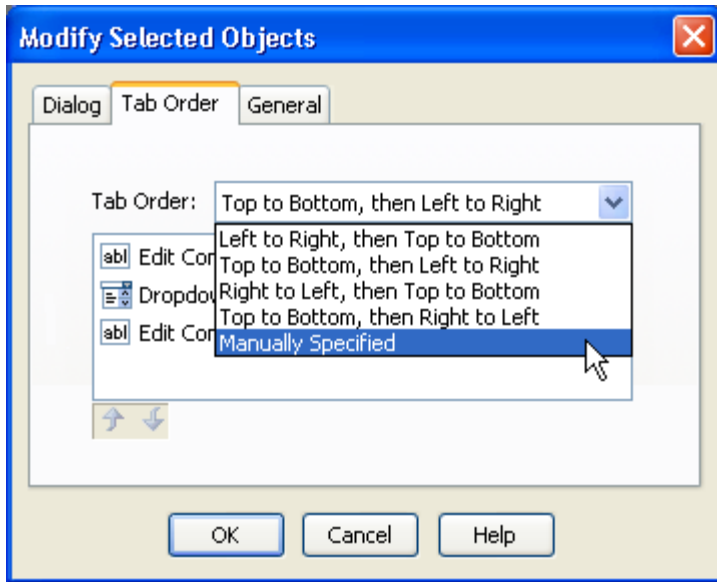
The data entry form designer in BarTender 9.3 now supports pop-up tips in response to certain hover actions.

Write your own Help Text for Data Entry Forms

The data entry form designer now offers a new checkbox called **Show comments when Help (F1) is pressed**. This option, located in the **General** tab for the form, allows you to specify that the text in the **Comments For This Object:** option be viewable as help text during execution of the data entry form.

Define Tab Order

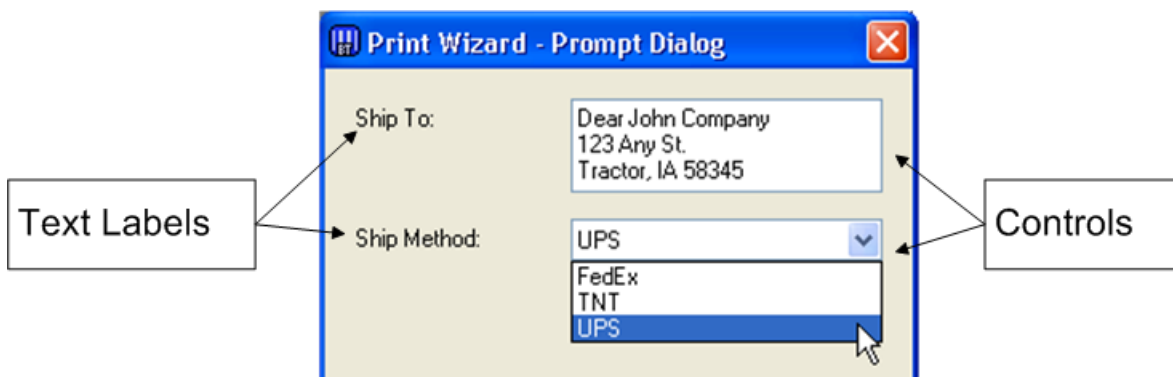
Prior to version 9.3, tab order (the order in which controls on a data entry form receive the focus when users press the Tab key) was determined by the location of the data entry controls on the form. Now you can explicitly set the tab order using the **Tab Order** tab on the data entry form's **Modify** dialog. You can select one of four preset order sequences that are based on the positions of the objects in the form, or you can manually specify an arbitrary tab order using a list control.



Choose one of four predefined data entry sequences or define a custom tab order.

Built-in Text Labels for Most Controls

With BarTender version 9.3, when you create list objects, radio buttons and checkboxes in the data entry form designer, built-in text label objects are now automatically created next to these objects. This avoids the effort of having to create them separately and offers the added convenience of the text labels moving automatically with the primary object.



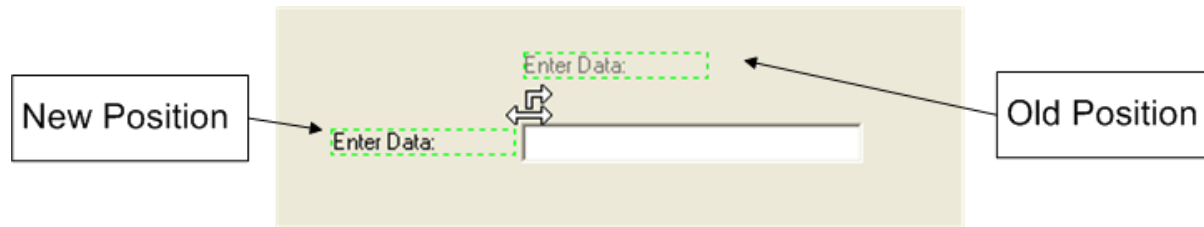
Text label objects are now automatically created for most controls on data entry forms.

The use of built-in text label objects is optional, but it defaults to being enabled for all controls except Radio Buttons.

New “Snap To” Positioning for Text Labels


Although newly-created text label objects will by default appear to the side or the top of the control that is created at the same time, you can easily pick up the text label with your mouse

and reposition it. The text will conveniently “snap” into a position above or to the left side of the control, or you can define a “free-form” position for precise, arbitrary positioning.



Improved Text Objects

The behavior of the **Text** object has been improved so that it now displays by default as a single line of text. In addition, the text is part of a control whose width automatically expands *and* contracts based on the amount of text. Previously, when the amount of text exceeded the default width of a **Text** object, the text wrapped to multiple lines. Now, instead, you have to explicitly enable paragraph wrapping if you want the text label to wrap to multiple lines.

(This can be done using the  buttons in the toolbar or the

Single Line Paragraph options in the **Text** tab of the **Modify Text Object** dialog.)

Industry-Leading Weighing Scale Support

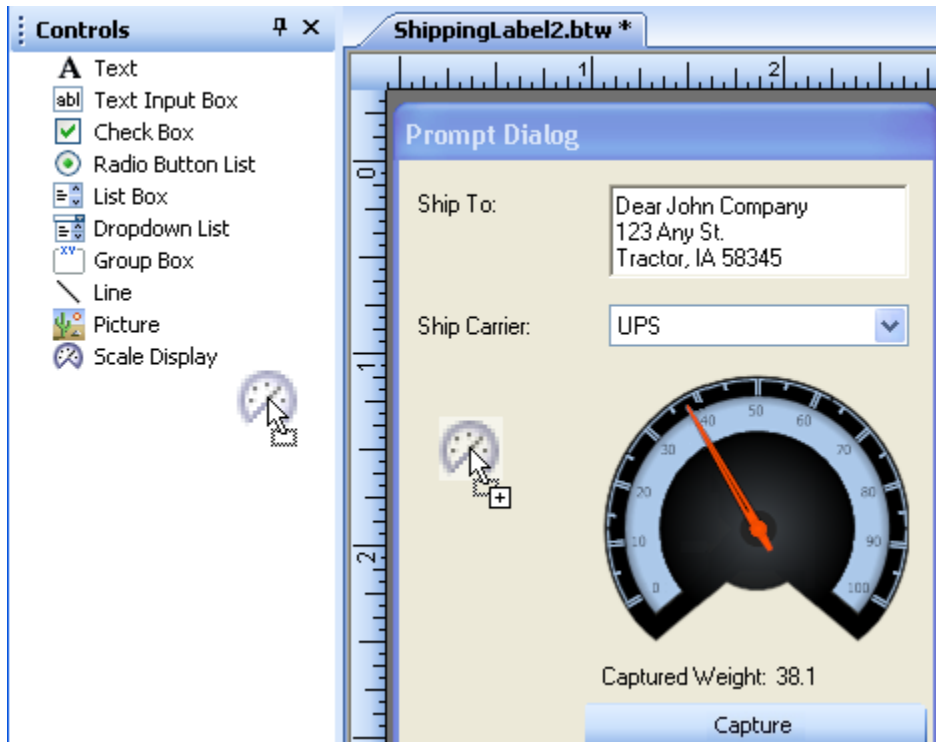
With version 9.3, the BarTender Application Suite introduces by far the most powerful and versatile support for weighing scales available in any label software package. (Scale support is offered by the Automation and Enterprise Automation editions of BarTender.)

(In addition to BarTender’s new ability to read weighing scale data into data entry forms, Commander now supports serial port triggers. This allows Commander to simplify the design of systems where placing an object on a scale automatically launches a print job. For more information on using Commander’s serial port triggers with scales, please see the Commander white paper.)

In addition to the information available in this section, extensive details on BarTender’s scale support are available in the [“Weighing Scales” white paper](#).

Easy “Drag and Drop” Creation on Data Entry Forms

From within BarTender’s prompt design view, you simply drag a weighing scale control from the Toolbox into a data entry form, just as you would any other type of control.



You “drag and drop” scale objects to create them on forms just like any other data entry object.

Eight Scale Displays to Choose From

There are eight basic varieties of scale display you can choose from, including four analog-style and four digital-style displays. In addition, each of these eight scale displays can be customized for color, size, maximum display value, number of decimal digits, type of weight to display (gross, net, tare) and weight units.



BarTender supports eight types of scale displays, each of which has numerous customizable parameters.



You can even add your own custom toolbar to your scale display.

Links the Same way as other Data Entry Objects

You link an on-screen scale display with a bar code or text object the same way that you do any other control on your data entry form: You simply “drag” a sub-string from the Toolbox on the left of the design area and “drop” it onto the scale.

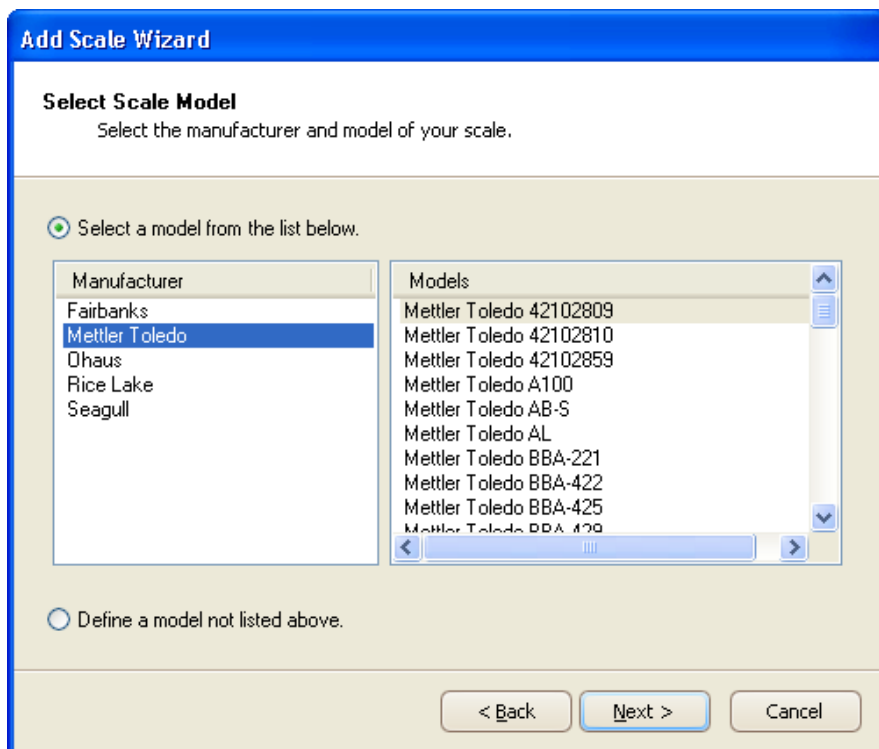
Selecting the Scale to Read From

After you add a scale display to your data entry form, you can immediately start customizing its display appearance as desired. However, before you can read data from a scale into your forms or print scale data on your labels, you will need to complete an appropriate scale setup procedure.

Numerous Predefined Scale Configurations

To configure BarTender to read from a given model of scale, you either:

- Double-click on the scale control in your data entry form and choose the desired scale from a drop-down list. (If no scales have yet been installed on your computer, you can select **New...** to launch the Add Scale Wizard.)
- Or, use the **Weighing Scale Setup** option of the **Administer** menu in BarTender and select the **Add Scale...** option to launch the Add Scale Wizard.



The Add Scale Wizard contains a sizeable, predefined list of scale manufacturers and models.

Once you have selected your scale model and the port it is connected to, you can start reading scale data into BarTender's data entry forms.

Also Supports Unlisted Scales

If your scale (or a similar scale) is not listed in the Add Scale Wizard, you would select the **Define a model not listed above** radio button in the Add Scale Wizard (see above) and press **Next** to manually enter the significant protocol parameters for your scale.

Tare Options

The “tare” weight is the weight that you subtract from the gross weight to account for containers and packaging in order to calculate the net weight. “Tare” is also used as a verb used to describe the process of setting the zero point of the scale. In addition to whatever front panel controls your scale may have, there are two ways to “tare” your scale from within BarTender:

Using the Tare Button and/or Clear Tare Button on the Scale Display's Toolbar

You can actually add your own custom toolbar to BarTender's Scale Displays. Among the available buttons are Tare  and Clear Tare , which will work very similarly to the scale's own front panel Tare control.



The buttons available for use on your on-screen Scale Display include Tare and Clear Tare .

Data Sourcing the Tare Weight

You may sometimes use your scale to weigh many different types of items, each with its own tare weight. If the various tare weights are known in advance, you can read these different values in from your database while running your print-time data entry forms, thereby properly and automatically taring each different item as it is weighed.

Improved IBM WebSphere Support in Commander

WebSphere is an application development and integration environment from IBM. As SAP and Oracle do, WebSphere offers a suite of applications for managing ERP, supply chain and other business processes, as well as tools for connecting with other software environments and applications. One such tool is IBM's Sensor Events application (formerly Premises Server and RFID Premises Server).

Previous Support was Unidirectional

Through use of BarTender's Commander companion application, BarTender has offered an IBM-certified WebSphere Sensor Events printing interface for many years, including the ability to receive label printing requests from either a file drop or over a TCP/IP socket. However, prior to version 9.3, BarTender's WebSphere Sensor Events print support was *unidirectional*. This means that:



- The calling application sends a print request.
- BarTender prints the job.
- But, with a unidirectional print interface, the calling application does not receive back print status information from BarTender. That means that the calling application has no way to confirm whether the requested print job launched or successfully completed.

Although BarTender has long been able to log the print status of jobs to the BarTender System Database, the calling application cannot necessarily get at this data. Fortunately, WebSphere Sensor Events defines a standard for returning print status information to the calling application, thereby allowing us to implement a bidirectional print interface using Commander. (Improved Unidirectional support is available in both Automation editions. Bidirectional printing is supported in Enterprise Automation only.)

New XSL Transforms for WebSphere Sensor Events

Commander now provides three new XSL transforms specific to supporting WebSphere Sensor Events:

- **IBM WebSphere Sensor Events XML to BTXML:** Used by Commander to transform the incoming print request from WebSphere Sensor Events into BTXML for execution by BarTender in support of *unidirectional* printing.
- **IBM WebSphere Sensor Events XML to BTXML with Print Status:** Similar to the previous XSL transform, but supports *bidirectional* printing.
- **BTXML Print Response to IBM WebSphere Sensor Events:** Once the initial BTXML commands are executed by BarTender, this last transform converts the BTXML Print Response from BarTender into print status information that is understandable by WebSphere Sensor Events.

New Sample Task Lists for WebSphere Sensor Events

To simplify the integration of BarTender with IBM WebSphere Sensor Events, Commander now includes sample Task Lists for handling unidirectional and bidirectional WebSphere Sensor Events print jobs.

Other Commander Improvements

New “Send to Web Server” Command

In addition to Commander's existing **Save to File** and **Send to TCP/IP Socket** commands, Commander now offers a new **Send to Web Server** command. It can send data to a web server using any of five HTTP Request methods: Get, Post, Head, Put and Delete. It also allows you to specify the type of authentication required, as well as define the successful return codes. (Supported in Enterprise Automation edition only.)

New Serial Port Triggers in Commander

The Commander integration utility has long supported triggers for files, emails, and TCP/IP sockets. Now, with the release of BarTender 9.3, Commander can also accept triggers from

serial ports, thereby offering integration support for a wide variety of serial devices, including weighing scales. For example, Commander can now automatically accept weights from scales and then launch a BarTender print job to output labels that include the measured weight – all without manual intervention. (Supported by both Automation editions.)

The new Commander options for handling serial port triggers are very similar to the existing Commander options for TCP/IP sockets.

New Commander Variables

The **File** menu in the new version of Commander includes a new dialog called **Task List Options**. The **Variables** tab on this new dialog allows you to create a list of Commander Variables and to define the initial values they will have each time Commander processes a trigger. The value of Commander variables can be referenced by numerous Commander commands that you might execute within a Commander task. You can even modify Commander variables by executing Commander script. (Supported by both Automation editions.)

The use of Commander variables allows you to store values into a single location and reference them from multiple different Commander commands, instead of your having to copy the same value again and again into each of the commands. For example, you might need to reference a URL or folder name multiple times. The option to store these values in a single, centralized variable means that any change that you need to make to the initial value can be made more quickly and reliably.

The new **Task List Options** dialog also offers a new **Comments** property that allows you to define notes that can optionally pop up when a task list is opened.

Bar Code Improvements

New Human Readable Support for 2D Bar Codes

Prior to BarTender version 9.3, only one-dimensional (or “linear”) bar codes could automatically print the bar code data in human readable form beneath (or above) the bar code. To do this with two-dimensional bar codes, you had to create a separate text object and link its data source with the bar code. Now, with BarTender version 9.3, two-dimensional bar codes support printing of the data in human-readable form in the same way that one-dimensional bar codes have for years. (Supported in all editions.)



Also, when used as an object for the Object String data source in BarTender, 2D bar codes now support the Human Readable property, just as linear bar codes do.

Split Display Above and Below GS1 Composite Bar Codes

The standard for display of the human readable characters for GS1 Composite bar codes is to print the Primary Data above the bar code and the Secondary Data below the bar code. This is optionally supported by using the new **Split** setting of BarTender's **Human Readable Placement** control. You can also continue to specify the **Above Symbol** and **Below Symbol** settings commonly used with linear bar codes.



New Object String Data Source Options

When using a GS1 Composite bar code as an object for the Object String data source, in addition to the existing **Main Data Source** and **Human Readable Text** options, there are now four new options:

- **Primary Data**
- **Secondary Data**
- **Primary Human Readable Text**
- **Secondary Human Readable Text**

These are helpful when you want to retrieve just the primary or secondary portion of the data source or human readable text of a GS1 Composite bar code.

Support for New GS1 Application Identifiers

Expanding the extensive list of Application Identifiers (AIs) already supported in BarTender's GS1 Application Identifier Data Source Wizard, we have added support for three new AIs.

- **254:** GLN Extension Component
- **8110:** Coupon Code Identification For Use in North America
- **9012Q:** Cover Price

Improved Object Automation

When we talk about “automating” BarTender, we refer to the general process of controlling BarTender from within other software. When we talk about *object* automation, we are referring more specifically to the process of manipulating individual objects on the label, such as bar codes and text. This is in contrast to *application* automation functions, such as loading a label format or printing it. (Object automation is supported by both Automation editions.)

Programmatically Modifying Label Object Properties

BarTender 9.3 adds automation commands to support changing an object's position, size, color, and visibility under programmatic control. These commands can be issued from inside BarTender using VB Script or issued from outside of BarTender using our ActiveX Automation interface.

- To modify label objects using VB Script, please see the [Document Level VB Script Support](#) section below.
- For details on how to modify label objects using ActiveX automation, see the "Automating BarTender" section in the BarTender online help system.

On-the-fly Modification of Object Properties

Object automation commands originating within BarTender using VB Script can modify label object properties right in the middle of a print job. In contrast, when using our standard ActiveX Automation command set to control BarTender, you cannot modify label objects once a print job has started.

The new ActiveX Automation commands for controlling the previously-mentioned label object properties are not yet supported by the BarTender .NET SDK. However, even when taking advantage of the SDK for other purposes, it is quite easy to directly access BarTender's full ActiveX Automation interface (including the new object-level commands) using the .Net languages.

New Document-Level VB Script Support

BarTender's VB Script Assistant has long made it easy for users with limited programming experience to author Visual Basic Scripts to modify, validate and source label sub-strings in the middle of print jobs. However, these scripts have until now only been useful for affecting data on the label. Now, with version 9.3, BarTender adds support for the execution of VB Script in response to a variety of document-level events, including open, close, save and a variety of print-time events. Used in combination with the newly-added object automation commands described in the previous section, you can now programmatically modify BarTender label objects before and even *during* print jobs. (Supported by both Automation editions.)

List of New Document-Level Events

In BarTender's **File, Label Format Options** dialog, there is a new **VB Script** tab that allows you to define scripts for the following document-level events:

- OnOpen
- OnClose
- OnSave
- OnPrintJobStart
- OnNewRecord
- OnSerialize
- OnIdenticalCopy
- OnPrintJobEnd
- OnPrintJobCancel

For example, you could use the OnNewRecord event to perform on-the-fly modification of properties such as color, size, and visibility of the objects to be printed based on the values of fields in the database record.

Support for Data-Sourced VB Script

You can even feed VB Script into BarTender from external sources, such as a database or a program that is controlling BarTender. For example, you could have a field in a database contain VB Script code. Then, when BarTender reads the data record that contains that field, VB Script code in BarTender can use the VB “Execute” statement to execute the imported VB Script code.

.NET SDK Assemblies are now Strong-Named

Since the debut of BarTender 9.0, developers of custom integrations for controlling BarTender have been able to build their code around the BarTender SDKs (short for Software Development Kits), instead of writing applications entirely from scratch. Use of these prewritten procedures allows VB.NET and C# developers to write, debug and finish their integration projects much faster than they can when limited to basic ActiveX Automation commands.

The BarTender SDKs contain partially compiled code libraries called “.NET assemblies” that can be easily referenced by user’s custom applications. Previously, these assemblies were “simple-named,” but now they are “strong-named,” which allows developers to:

- Reference the BarTender SDK from their own strong-named .NET applications.
- Write strong-named assemblies that reference The BarTender SDK’s strong-named .NET assemblies.

- Store strong-named assemblies from the BarTender SDK, or assemblies that depend on them, in the .NET Global Assembly Cache (GAC). This allows multiple applications to reference a single copy of the .NET assembly in the GAC, instead of each application requiring its own copy.

In order to be strong-named, a .NET assembly must contain some extended identification information, including:

- Its simple text name
- A version number
- A public key
- A digital signature

(There is also some additional optional information that you can add.)

New Alignment Options for Paragraph Text Objects

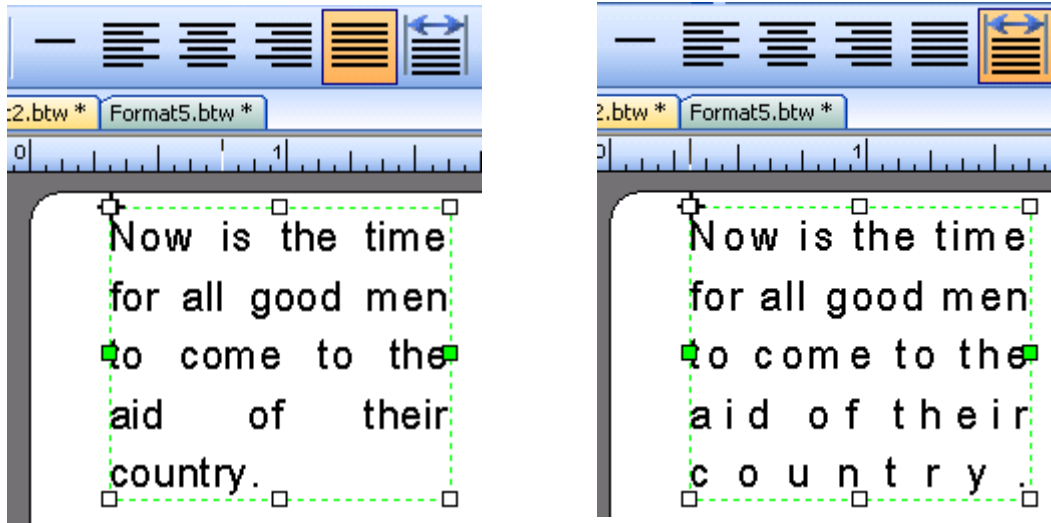
BarTender's paragraph text objects have long supported **Left**, **Right**, **Centered**, and **Justified** alignment. Version 9.3 now adds support for **Distributed** alignment, which is frequently used with Japanese, Chinese, and Korean text, as well as an **Orphan Alignment** option. (These options are available in all editions of BarTender.)

Distributed Alignment

Distributed alignment is similar to justified alignment, in that both the left and right edges of the paragraph are evenly flush. However, **Distributed** alignment accomplishes this in a different way.

- **Justified** alignment works by varying the space between *words*.
- **Distributed** alignment works by varying the space between *each character*.

This is most easily understood by examining the two side-by-side illustrations below. The image on the left shows a paragraph that has been aligned using the common “justified” method. The spaces between the words vary in width on each line so that it is both flush left and flush right (except for the last line). In contrast, in the example of “distributed” alignment on the right, not only the spaces between the words, but also the spaces between each character are varied. Note that, in contrast to the justified example, even the very last line of text is flush on both the left *and* right.



Justified alignment (left-hand image) and distributed alignment (right-hand image) align the paragraph flush both left and right. However, only “distributed” alignment aligns the last line of text on both the left and right.

Orphan Control for Justified or Distributed Alignment

When (as in the above example on the left) the last line of a justified paragraph contains only a single word, that word cannot be aligned both flush left and right. However, it can be if distributed alignment is used (as in the above example on the right). The one exception is that, if the last line of a paragraph happens to contain just a single character (instead of a full multi-character word), that character cannot be aligned both flush left and right regardless of the alignment method used. Any time the last line of text in paragraph cannot be aligned both flush left and right when using justified or distributed alignment, that last line is referred to as an “orphan.”

It is common in Western languages to keep orphans flush left when using justified alignment. However, this is not necessarily always the preferred treatment. Therefore, BarTender version 9.3 adds an **Orphan Alignment** option that supports both justified and distributed alignment. The options are **Left**, **Right**, **Center**, and **Auto**, the last of which is the default setting.

The “Auto” Orphan Alignment Option

When **Orphan Alignment** is set to **Auto**, orphans are aligned as follows in each of the following writing systems:

- With Hebrew and Arabic scripts, orphans are aligned to the right.
- With Asian scripts, orphans are centered.
- With all other scripts (including Western scripts), orphans are aligned to the left.

Sample GHS Label Format

The BarTender\Formats sub-folder of your Documents folder now contains:

- GHS_Demo.btw (a label format)
- GHS_Demo.txt (a delimited ext file containing data)

When BarTender prints the GHS_Demo.btw label format, BarTender reads the GHS_Demo.txt text file and merges the data into the label design to demonstrate BarTender's ability to print GHS symbols. (GHS stands for Globally Harmonized System of Classification and Labeling of Chemicals.) (The GHS labeling demo is supported by both Automation editions.)

Prints one or more GHS Symbols

You can have one or more fields in your database or text file signal BarTender to render one or more GHS symbols. These symbols communicate information such as health hazards or risk of fire. For more information, please see our [GHS Labeling](#) whitepaper.

Numerous User-Interface Improvements

BarTender has received so much recognition for its ease of use that most of our upgrades during the past 5 years have centered on power features and enterprise management. Now, with version 9.3, we have reviewed a variety of user interface functions that we haven't adjusted in quite a few years and made numerous improvements designed to make BarTender even easier to use. Considered individually, no one user-interface enhancement represents a major change. However, considered all together, this is the most significant improvement in usability we've introduced in years. (All of the improvements described below are supported by all BarTender editions.)

Overview

Users with moderately high-resolution displays will automatically benefit from our **Large Icons** toolbar. We've also introduced a brand new character insertion tool to make it much easier to select symbols and special characters for addition to your labels. In addition, the **Font** toolbar now automatically displays previews of the available typefaces, thereby making it easier to select the desired font. We've also improved our ruler and grid functions, the status bar, object movement, object creation, zooming and panning.

Automatic Switching to Large Icons on Toolbar

For years, all toolbar buttons in BarTender were 16 x 16 pixels in size. Then, to take advantage of the increasing popularity of higher resolution monitors, version 8.0 of BarTender (released on March 20, 2007) introduced larger 32 x 32 pixel toolbar icons. Larger, higher-resolution icons tend to be more attractive and to more-clearly describe the functions that they represent. Furthermore, with *very* high-resolution monitors, the 16 x 16 icons can actually begin to look undesirably small.

Although the 32 x 32 pixel icons have been available for years in BarTender, users unfortunately had no easy way to stumble upon this feature and the higher-resolution icons were often therefore unused. Now, with BarTender version 9.3, the use of 32 x 32 icons is *automatic!* Instead of your having to find and modify the appropriate **View** option, BarTender analyzes your monitor's horizontal resolution and automatically enables the use of 32 x 32 icons if there is room for them to fit. Otherwise, BarTender uses the older-style 16 x 16 pixel icons.



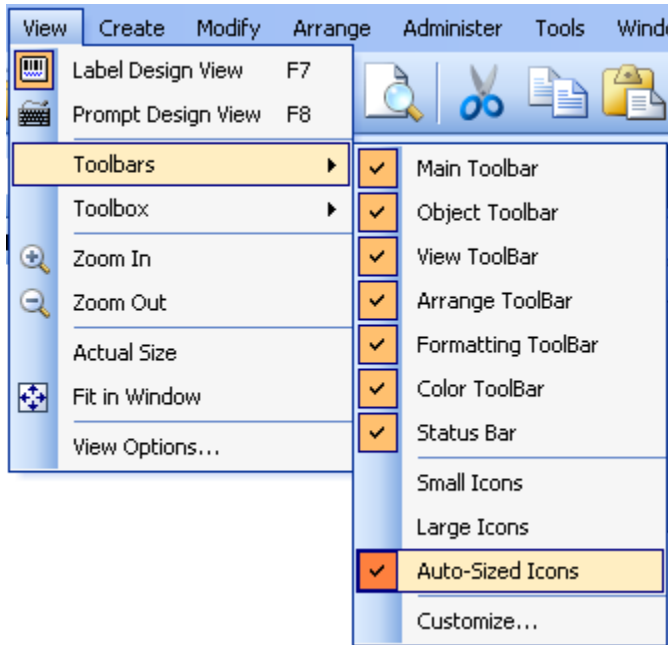
The 32 x 32 pixel toolbar icons (shown on top) are more detailed, more attractive and easier to see than the older 16 x 16 icons (shown on the bottom).

Manually Controlling Toolbar Resolution

If you don't want BarTender to automatically choose for you between 32 x 32 and 16 x 16 toolbar icon resolution, you can manually specify the setting yourself. In the **View, Toolbars** menu, there are now three options:

- Small Icons
- Large Icons
- Auto-Sized Icons

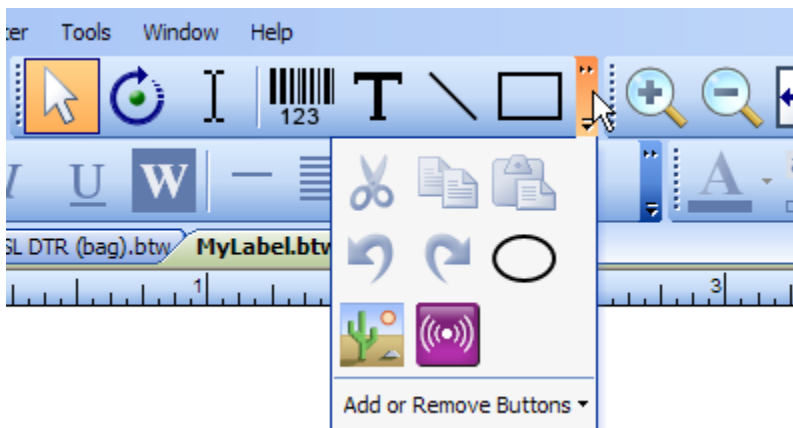
The default setting is **Auto-Sized Icons**. To force BarTender to use small or large icons regardless of the screen resolution, pull down the **View, Toolbars** menu and select the desired option.



The View, Toolbars menu lets you select between three different icon resolution modes.

About Lower Resolution Monitors

Just because your monitor's horizontal resolution is not high enough to fit all of the "large" icons on screen at once does not necessarily prevent you from enjoying the larger toolbar icons. However, if you force display of **Large Icons** when you don't have room for all of them, some of the icons will become hidden and can only be accessed by pulling down the Toolbar Options button located at the right of each of the toolbar sections.

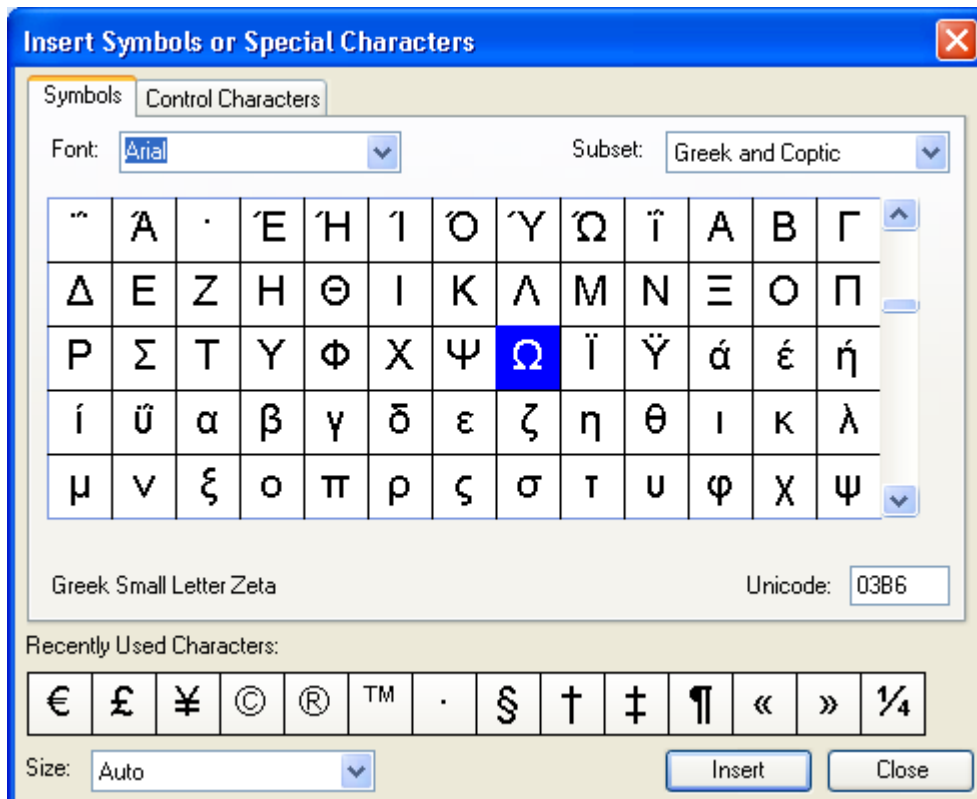


If you override the "Auto" option and force the use of large icons on too small of a monitor, the icons will not all fit. In this case, the suppressed icons can still be seen by pulling down the Toolbar Options button in the any of the toolbars.

New “Insert Symbols or Special Characters” Dialog

Sometimes it is not obvious how to type certain characters that you may want to manually enter into a label. Previously, BarTender had a right-arrow button next to some edit boxes that accessed a dialog used to enter control characters only. That symbol on that button has now been changed to an Omega character Ω and the button now brings up the brand new **Insert Symbol or Special Characters** dialog, which allows you to insert literally any character available within the font assigned to the selected label object. Depending on the selected font, this may include:

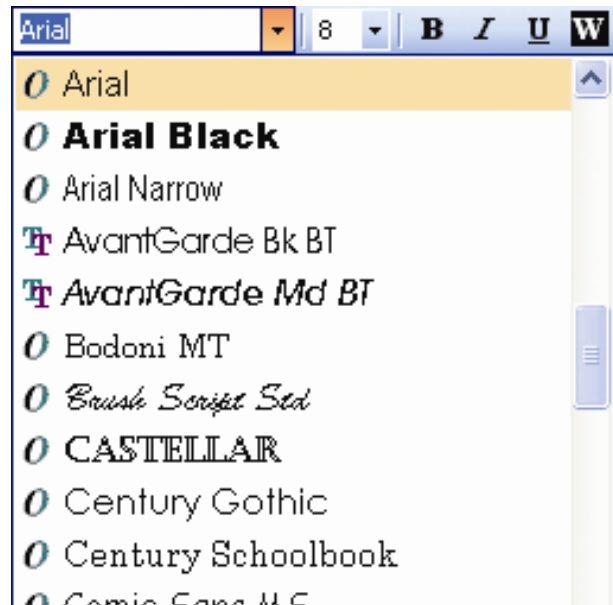
- Symbols in a symbol font
- Control characters
- Various characters with diacritics above them (such as is found with many European characters)
- Any of the numerous Asian characters
- And every other Unicode character in existence!



The new “Insert Symbols or Special Characters” dialog lets you insert into your labels any character available with the selected font.

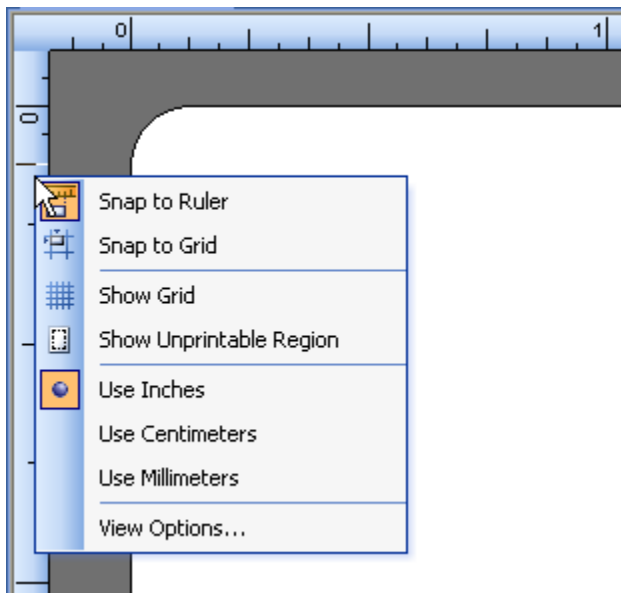
Font Toolbar Now Displays Font Sample

With BarTender version 9.3, when you drop down the list of fonts on the font toolbar, each font name is now displayed using that font (instead of all of the names being displayed in the same default font). This makes it easier to see how each font looks, thereby speeding up selection of the desired font. (BarTender's **Modify Object, Font** dialog has long had a display window for previewing the appearance of each font. Only the font toolbar did not.)



Ruler and Grid Improvements

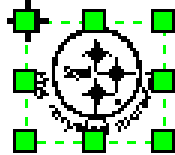
Right clicking on either of the on-screen rulers along the perimeter of the label design area now brings up a context menu that allows you to make common changes, such as selecting the units of measure. We've also added the option to snap to the grid (in addition to the long-existing option of snapping to the ruler). New options can also now be found in the **View Options** dialog for customizing the style and color of the grid display.



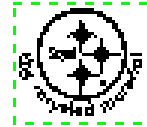
With BarTender version 9.3, a quick, simple right-click on either ruler is enough to access the various grid and ruler options.

Object Movement Improvements

When moving very small objects in the label design area, the square handles could seem so large relative to the image that they obscured the view of the selected object. Now, the handles are automatically hidden while you move the object. This makes it much easier to quickly and more accurately place objects.



Prior to BarTender 9.3, selected small objects could be obscured by their handles, making it more difficult to finely position them.



With BarTender 9.3, the handles of selected objects are hidden during object moves, making it much easier to finely position small objects.

Object Creation Improvements

Object creation using the Toolbox has always supported two object creation methods:


- **Double-click**, to immediately add the object to the design area. (You then have to move it to place it into the exact desired location.)
- **Click-and-drag**, to let you precisely specify the position of objects at the moment of creation.

Previously, however, single-click had no effect. Now, with BarTender version 9.3, single-clicking on an object or component in the Toolbox gives you an object creation cursor in the design area. You then click again in the design area to create the previously selected object in the desired position.


Zoom Improvements

For many years, the **Zoom In** and **Zoom Out** functions of BarTender required two steps:

1. Click on the desired zoom button (either **Zoom In** or **Zoom out**).
2. Click again in the design area.

After the zoom operation was completed, you then had to click on the button in the Toolbar with the arrow-shaped  image in order to change from having a zoom cursor back to the normal pointer cursor. Wherever you clicked in the design area was considered the center of

the desired **Zoom In** or **Zoom out** function. This could save you from ever having to pan once you were done resizing your design area. However, this also required more steps just to perform a simple zoom.

Now, with BarTender 9.3, clicking on the **Zoom In** or **Zoom Out** Toolbar buttons *immediately* causes the design area to be resized on screen. In addition, a new **Zoom to Rectangle** button  has been added to the Toolbar. Although this button *looks* new, it actually performs that same function as BarTender's old **Zoom In** button. That is, you click on this Toolbar button to get a zoom cursor and you then click, drag, and release in the design area to define the area of the rectangle that you want to zoom into.

New “Fit all Objects in Window” Function

When your on screen objects only consume *part* of your screen and you don't mind giving up the view of the blank edges of your design area, the new **View, Fit all Objects in Window** function let's you zoom in as far as you can on these objects. This function is also a very quick way of changing to a zoom size and position that displays objects on screen that you may have temporarily left outside of the design area.

New Click-Wheel Support for Zoom

If your mouse has a click-wheel, you can easily zoom into and out of the design area without clicking on either of the zoom buttons. Simply hold down the **Ctrl** button on your keyboard and then rotate your click wheel to precisely define your desired zoom level.

Pan Improvements

You can now pan the design area up and down and left and right using a number of alternative methods to the scrollbars on the edges of the design area.

Panning Up and Down

If your mouse has a click-wheel, using it will scroll the design area up and down. (Remember, as described in the previous section, if you first hold down the **Ctrl** keyboard key, the click-wheel controls the zoom level instead.)

Panning Left and Right

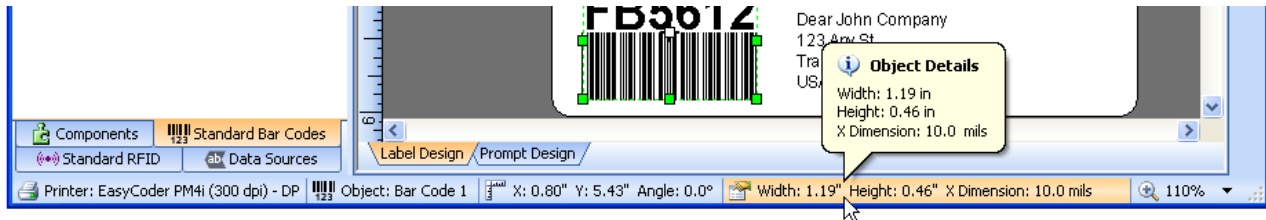
For mice with click-wheels that sense sideways movement or pressure, this can be used to pan the design area left and right. For mice that don't, holding down the **Shift** key on your keyboard allows your standard click-wheel to control side-to-side panning.

Panning Using the Arrow Keys

When no objects are selected in the design area, the arrow keys on your keyboard will now pan the design area.

Status Bar Improvements

With BarTender 9.3, the status bar located just below the design area now displays a greater variety of data and provides pop-up tips. In addition, the data in the status bar is no longer simply display-only – you can now click on the values and make changes in the corresponding dialogs that pop up.



Improvements to BarTender's Files and Folders Setup

There have been some enhancements made to the **File and Folder Setup** dialog in BarTender and Commander to make it easier to use. More importantly, these settings are now saved globally for access by all users on a given PC, instead of applying only to the active user. This ensures that changes made to the **File and Folder Setup** properties will remain in effect regardless of whether BarTender is being manually used by an individual or controlled by another program in an automated printing environment.

Import and Export Configuration Settings

You can now easily import or export the locations of configuration files or resource folders. In addition, you can export multiple separate configuration files into a single file for later importing. This makes it easier to take all of the configuration settings in use by one copy of BarTender and duplicate them for another copy of BarTender.

New Printer-Limit-Exceeded "Grace Period" and Usage Metering

Since version 9.01, BarTender has offered a 72-hour SLS-connectivity "grace period" during which BarTender could lose connectivity with the Seagull License Server (SLS) but still keep on printing. This allowed IT managers time to recover from network problems and failed servers without being denied print jobs just because SLS could not be detected. BarTender version 9.3 adds a second type of "grace period" and introduces a new way to count printers. Together, these features allow BarTender to be more forgiving when users exceed the number of printers that their BarTender license allows *as long as the license violation does not continue for more than 30 consecutive days*.

Automation Editions Now Regulate Weekly Printer Usage

Prior to version 9.3 of BarTender, the previously-named Enterprise editions tracked printer usage on a *daily* basis. Instead, starting with version 9.3, both Automation editions now track the number of different printers used over a *seven day* period (instead of just a single day).

A More Forgiving Approach to Printer License Violation

Prior to version 9.3 of BarTender, if the number of printers actually used exceeded the allowable number of licensed printers, print jobs to certain printers would immediately start being denied. It could then take up to 24 hours to return to full compliance with your printer license. Accordingly, in order to allow for quicker “emergency” recovery from a printer license violation, the Seagull License Manager allowed users to manually delete printers from their list of recently-used printers.

Now, starting with version 9.3, BarTender is *much* more forgiving of temporary printer license violations. Users now receive a 30-day grace period in which to correct the cause(s) of a license violation. At the same time, because of this licensing flexibility, it is no longer necessary for the Seagull License Server to be able to manually delete printers from the list of recently-used printers in an “emergency.” Accordingly, this feature has been eliminated.

(None of this applies to the Basic and Professional editions, which continue to be licensed based on the number of computers, rather than the number of printers.)

Understanding the 30-day Printer-Limit-Exceeded Grace Period

Because Seagull License Server now counts printer usage for 7 days instead of just 24 hours, it is easier to temporarily exceed your maximum allowable printer license count for legitimate reasons. For example, suppose that you brought 10 new printers into a label printing operation that was already running close to its maximum allowable printer count. You wouldn't want to have print jobs denied just because you disconnected old printers that you no longer needed (or that had failed) and started using new printers. The generous new 30-day printer license grace period gives you plenty of time in which to complete any printer upgrades and/or (if necessary) purchase a BarTender license that allows use of more printers.

Initiating the Printer-Limit-Exceeded Grace Period

The 30-day grace period is automatically initiated any time you use more printers than your printer license count allows. The main console screen of the Seagull License Server (SLS) will display a message that you have 30 days to correct the problem. In addition, if the **Alert Setup** option has been properly configured (which is *strongly* recommended), an email message will be sent out notifying an IT manager (or other target) of the license violation. Follow up emails will be sent once per day until the issue is resolved.

When activating Seagull License Server (SLS), the last page of the Activation Wizard provides you with an **Alert Setup** option and informs you of the importance of using it.

Temporary Access to Twice as Many Printers!

During the 30-day Printer-Limit-Exceeded Grace Period (or until you resolve your problem), SLS will temporarily allow for *double* the normally-allowed number of printers. This fully addresses the worst-case scenario of all of every single printer failing in a label printing operation all at once and *every single one* of them needing to be replaced. (This is obviously a *very* unlikely scenario. However, since the recently-used printers list in SLS can no longer be modified or deleted, this is the best way to ensure that it is not possible for properly-licensed BarTender users to ever be denied even one print job.)

Resetting the Grace Period

Ending your printer license violation is very straight-forward:

You simply have to go 7 consecutive days without using more printers than your BarTender license normally allows.

Once you return to compliance with your printer license for 7 days, SLS will respond with a message on its main console screen and will (if the **Alert Setup** option was properly set up) send out a similar message by e-mail. Thereafter, a new 30-day grace period is available if you happen to again exceed your maximum allowable number of printers.

Expiration of the Grace Period

If you go a full 30 days without resuming compliance with your printer license, you will be informed that your grace period has expired by a message on the main console screen in SLS and by daily emails. SLS will at that time also begin denying print jobs, starting with BarTender print jobs sent to the *least* recently used printers. (You continue to have access to the full number of printers that your BarTender printer license allows, but only the *most recently* used printers. This is the best way to provide you with a quick and easy return to compliance with your license.)

Available Seagull White Papers

General White Papers

- The Advantage of Drivers by Seagull

Companion Applications

- Printer Maestro, Part 1: Enterprise Print Management
- BarTender Security Center
- BarTender Web Print Server

Recent Upgrades

- What's New in the Latest BarTender

Integration White Papers

- Integration Overview
- Commander
- Commander Examples
- BarTender's .NET SDKs
- BarTender's ActiveX Automation Interface
- Exporting Printer Code Templates
- Using BarTender with Terminal Services and Citrix MetaFrame
- Integration with Oracle's WMS and MSCA
- Integration with IBM WebSphere Sensor Events
- Integration with SAP

Miscellaneous White Papers

- Weighing Scales
- Dynamically Changing Objects at Print-Time using VB Script
- GHS Labeling
- Licensing for BarTender's Automation Editions
- Printing International Characters Using BarTender
- BarTender Software Activation
- Using BarTender's Application Identifier Wizard
- Optimizing Label Printing Performance
- Status Monitor Overview
- Silent Install

For downloadable versions, visit:

www.seagullscientific.com/aspx/whitepapers.aspx

