

# The Sizes



The Standard Bottle Locks fit most 750 mL bottles.



The Large Bottle Locks fit most 1.75 L and 750 mL bottles with a slightly larger neck.



The XL Bottle Locks fit most Patron and 1800 750 mil bottles.



The 2XL Bottle Locks fit most 1.75 L Patron and 1800 bottles

Contact us at  
**AlcoholControls.com**  
**800-285-BEER (2337)**  
**Profit@alcoholcontrols.com**

# Related Products

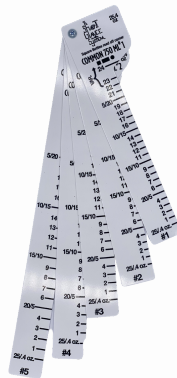


## Liquor Clickers

Specialized liquor dispenser designed to prevent excessive pouring and deter theft by bartenders.

## Heat Shrink Seals

Prevent bartenders from removing the spouts to enable free-pouring of liquor.



## Shot Glance

This facilitates quick and accurate inventory management, enabling the inventory of 60 bottles in under 10 minutes.

# Bottle Lock Instructions



# Directions

## 1. Choose your size

Select the correct size Bottle LoX that you will need to lock up your liquor bottles.

## 2. Attaching

Place an open Bottle LoX on top of the desired bottle as far it will go with the clear size facing front.

## 3. Secure

Squeeze the Bottle LoX to lock into place



# Removing Bottle LoX

1. Grab Bottle with Bottle LoX  
Grab the bottle with the Bottle LoX attached that you want to open.

## 2. Locate Magnet

Locate the designated magnet used to remove the Bottle LoX from the liquor bottles.

## 3. Detaching

Firmly wrap the dome on the back of the Bottle LoX on the center of the detacher magnet.



5. Removing  
Carefully pull up on the Bottle LoX to free the bottle and begin use.



## 5. Storing

After removing the Bottle LoX, place it in a storage bin or container where it can be used again