

Draft Beer Counter

Battery replacement

Step # 1:



Here is the replacement kit you will need.

Step # 2:



Remove the cover using a small screwdriver.

AlcoholControls.com

800.285.2337

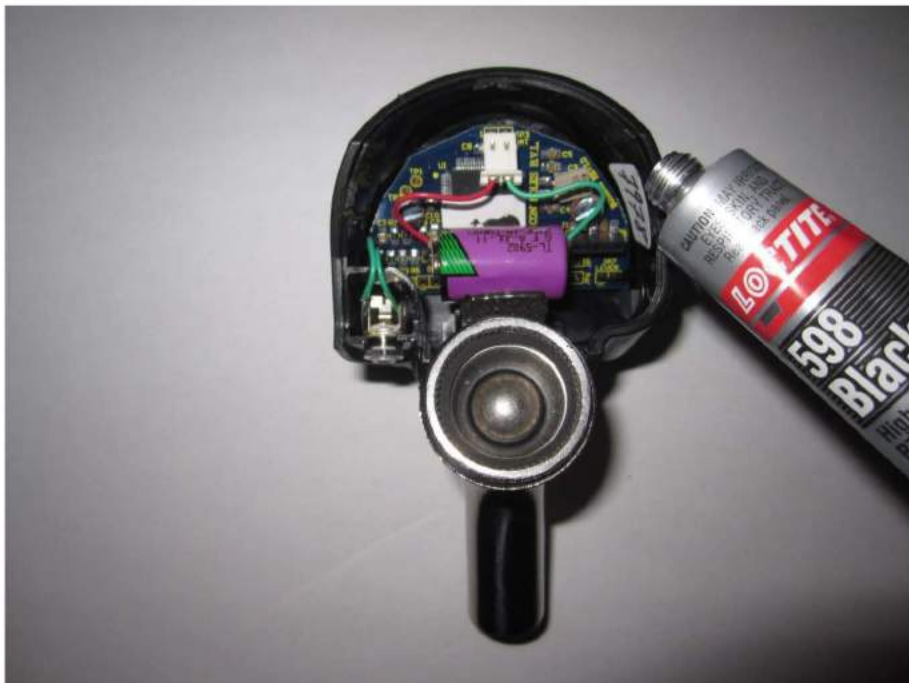
Draft Beer Counter

Step # 3:



Remove the old battery. When you plug the white connector into the two pins, ***be sure that the RED wire is on the LEFT hand side.***

Step # 4:



Check if the Draft Beer Counter is working properly. After, place the new battery inside the casing and apply silicone on the inside rim of the casing.

Draft Beer Counter

Step # 5:



Finally, put the cover back and hold it for about a minute.

Wipe off any silicone residue that may remain after replacing the back cover.