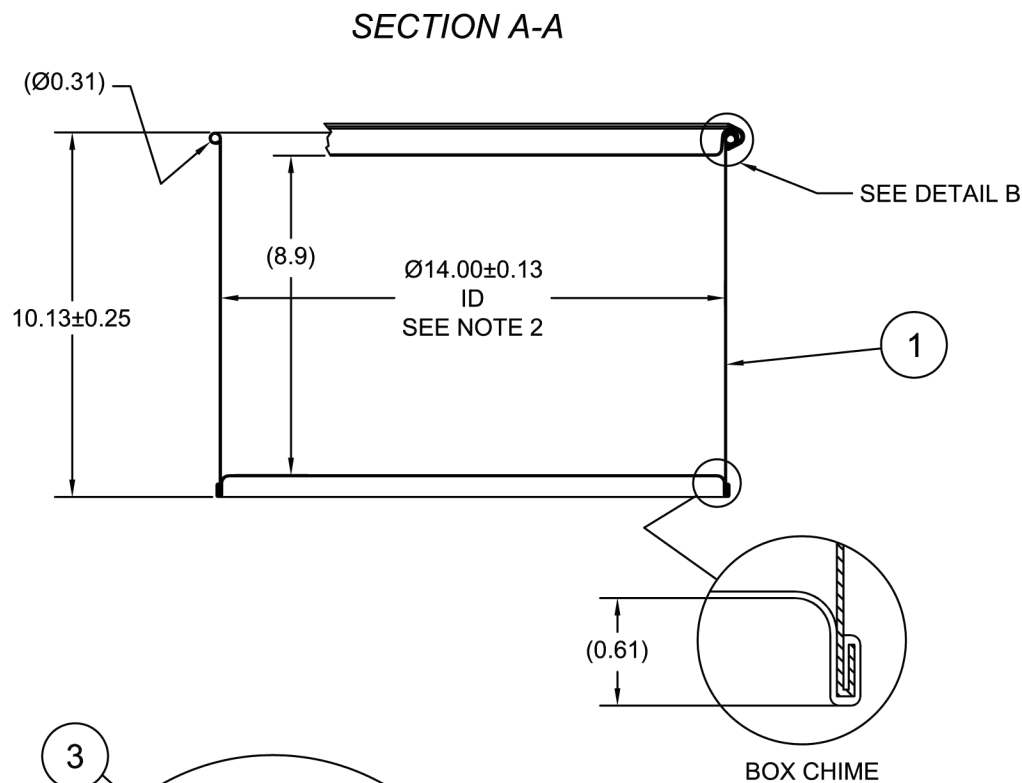
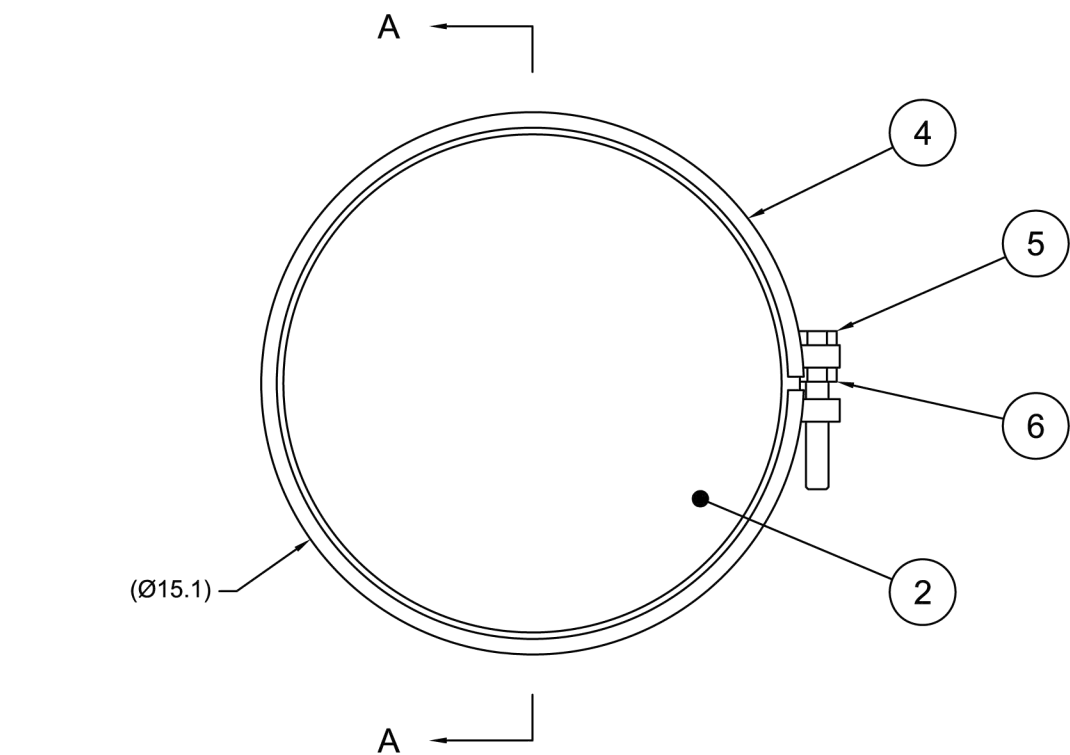


ECN # or INIT	REV	DESCRIPTION	DATE
OE-005	A1	DRAWN IN AutoCAD	03-AUG-2009
OE-001	A2	CLERICAL ERROR	04-AUG-2009
OE-001	A3	CLERICAL ERROR	15-APR-2013



NOTES:

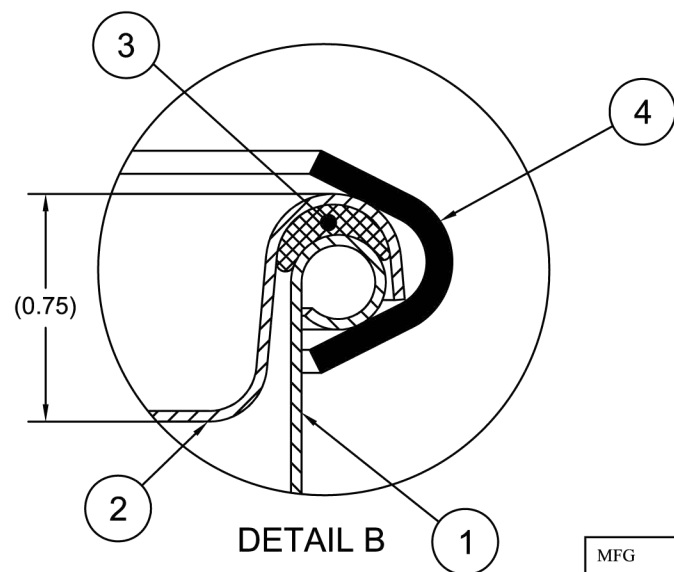
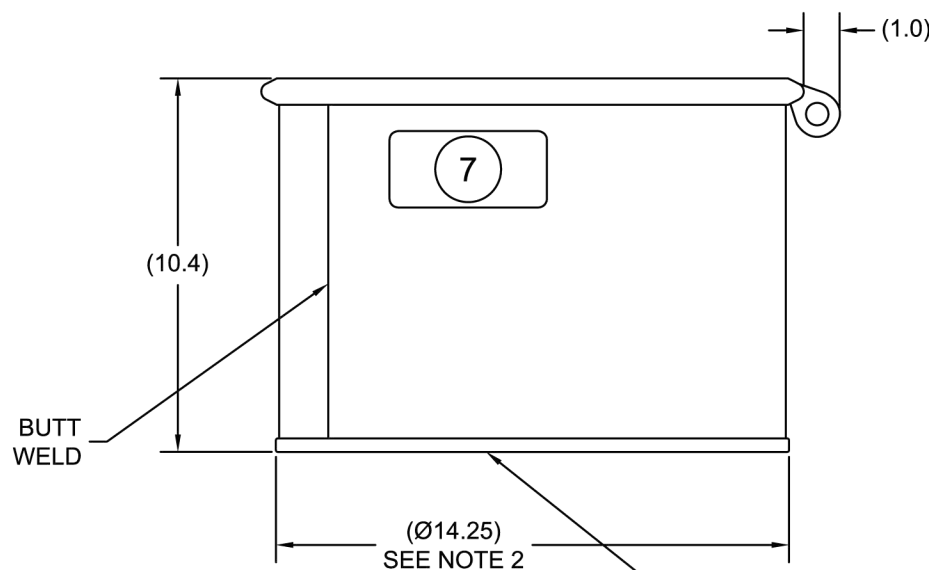
1. THIS DIMENSION REPRESENTS DRUM AFTER BEING PROPERLY ASSEMBLED AND CLOSED PER SKOLNIK CLOSING INSTRUCTIONS
2. TO DETERMINE GREATER ACCURACY OF ANY DIAMETRIC DIMENSION, MEASURING OF CIRCUMFERENCE IS REQUIRED
3. CONSTRUCTION per 49 CFR §178.504 (b)

MATERIAL:

1. 304SS PER ASTM A240 OR EQUIVALENT
2. MATERIAL THICKNESS: DRUM 0.9mm (0.0319 - 0.0370, 20 GAUGE)
3. GASKET MAT'L PER ASTM D1056
4. BOLT RING CARBON STEEL

FINISH:

1. PASSIVATED INNER AND OUTER SURFACE OF BODY WELD SEAM



7		UN DURABLE LABEL	1
6	NT5800	5/8-11UNC HEX JAM NUT	1
5	BT5840	5/8-11UNC X 4in LONG HEX HEAD BOLT	1
4	RBH1413	BOLT RING (MOD A) 5-16G 13GA 5/8 LUG	1
3	GE0503-01	GASKET 3/8 DIA RD EPDM	1
2	P1409S	COVER 14 ID	1
1		BODY/BOTTOM 5 GALLON DRUM 14 ID	1
ITEM	P/N	DESCRIPTION	QTY

UN NUMBER EMBOSSED ON BOTTOM OF DRUM
1/2" CHARACTERS READING:
UN/1A2/X60/S/YR
UN/1A2/Y1.5/150/YR
0.9 * 304

TARE WEIGHT:
10 lbs

(YR = YEAR OF MANUFACTURE)

MFG JR	DRW LJT	CHK MAR
SLS DR	QA MD	
APR G. Petersen		
FILE CREATED IN AutoCAD 2002		

UNLESS STATED OTHERWISE

(DIMENSIONS IN PARENTHESIS ARE FOR
REFERENCE ONLY!!!)

ALL DIMENSIONS ARE IN INCHES
DO NOT SCALE DRAWING

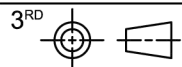
TOLERANCES:
FRACTIONS ±1/4

X° ± 3°

X.X ± 0.2

X.XX ± 0.10

X.XXX ± 0.030



DESCRIPTION
5 GALLON OPEN HEAD DRUM
0.9 - 0.9 - 0.9 304SS
1A2/X60/S & 1A2/Y1.5/150

PART NUM.
8ST0504