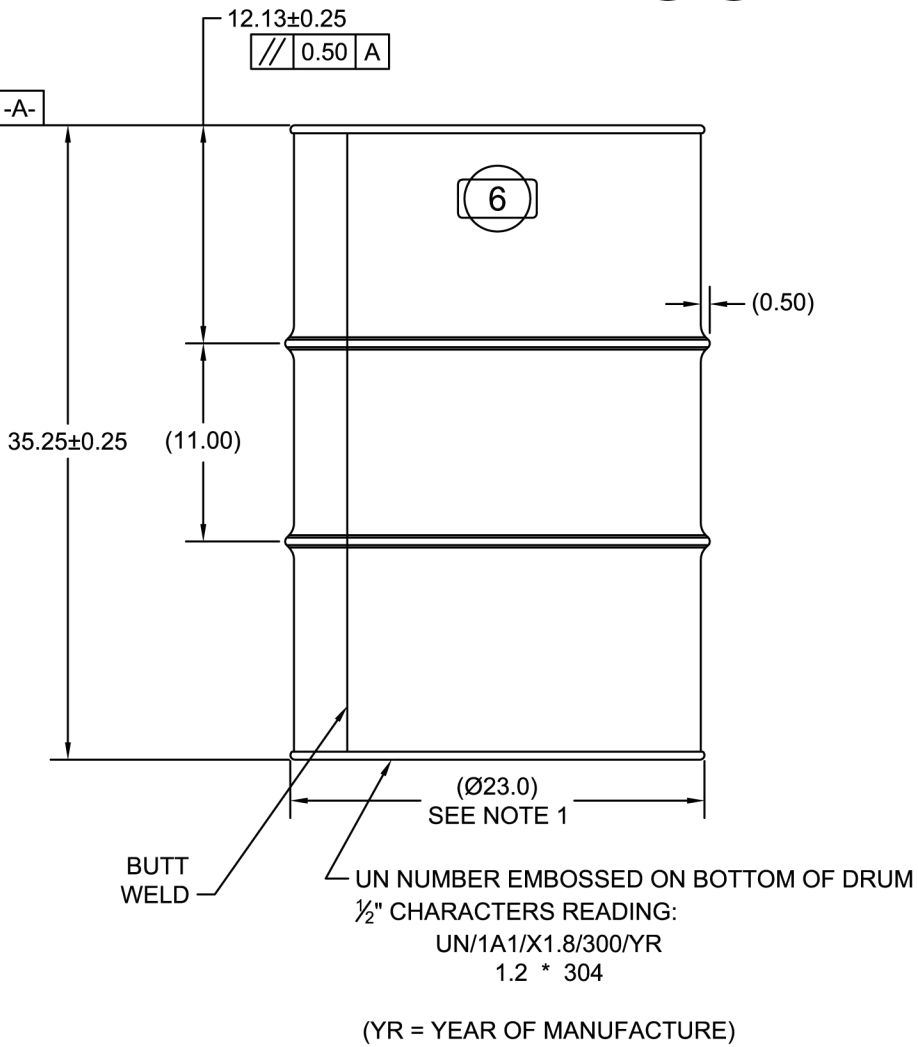
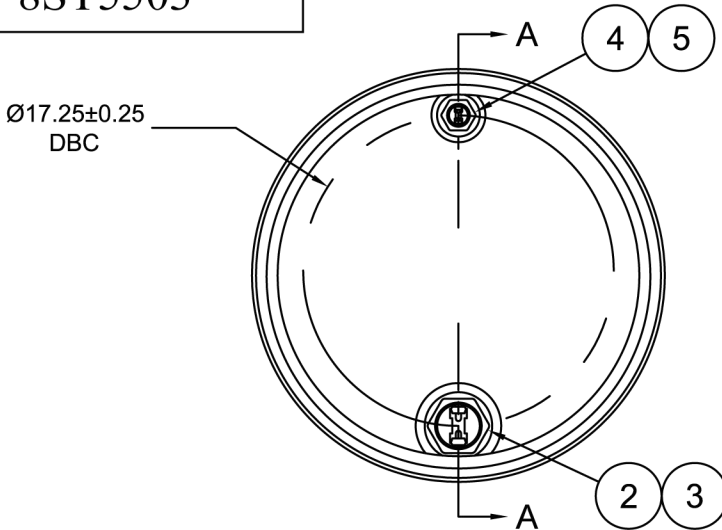
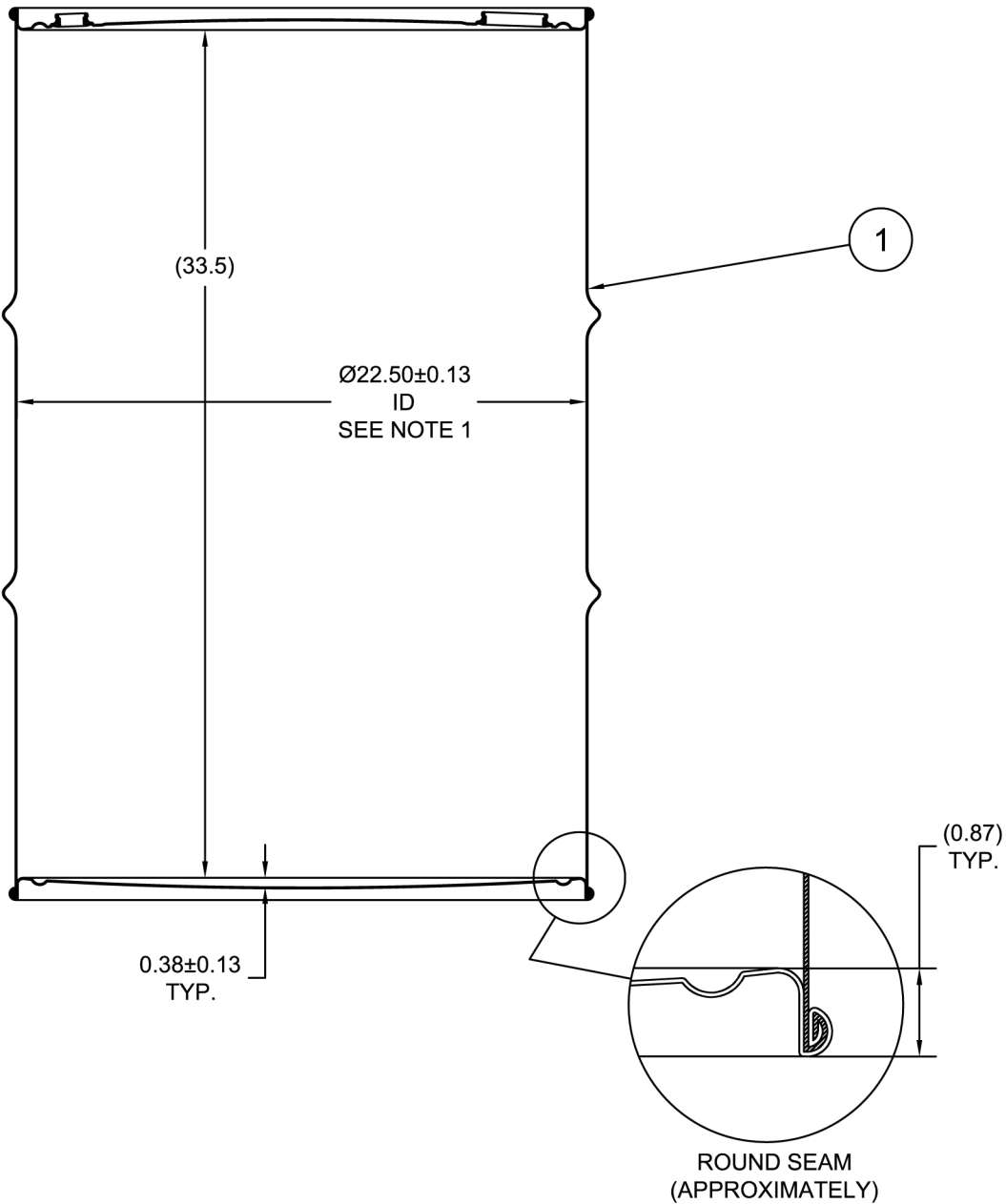


8ST5503



SECTION A-A  
(FITTING SHOWN WITH PLUGS REMOVED)



ECN # or INIT	REV	DESCRIPTION	DATE
OE-005	A1	REDRAWN TO AutoCAD	13-SEP-2010
OE-001	A2	CLERICAL ERROR	13-SEP-2010
OE-001	A3	CLERICAL ERROR	11-APR-2013
OE-001	A4	ADDED SEAM PROFILE	18-APR-2013
OE-001	A5	CORRECTED NOTE	24-APR-2013

NOTES:

- TO DETERMINE GREATER ACCURACY OF ANY DIAMETRIC DIMENSION, MEASURING OF CIRCUMFERENCE IS REQUIRED
- CONSTRUCTION per 49 CFR §178.504 (b)

MATERIAL:

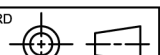
- 304SS PER ASTM A240 OR EQUIVALENT
- MATERIAL THICKNESS: 1.2mm (0.0433 - 0.0480; 18 GAUGE)

FINISH:

- PASSIVATED INNER AND OUTER SURFACE OF BODY WELD SEAM

6		UN DURABLE LABEL	1
5	PT3050	PLUG 3/4 TS 316SS BUNA GASKET	1
4	FT3050	FLANGE 3/4 TS 316SS BUNA GASKET	1
3	PT2050	PLUG 2 TS 316SS BUNA GASKET	1
2	FT2050	FLANGE 2 TS 316SS BUNA GASKET	1
1		55 GALLON TIGHT HEAD DRUM	1
ITEM	P/N	DESCRIPTION	QTY

TARE WEIGHT:  
48 lbs

THE USE OF INFORMATION CONTAINED HEREIN IS RESTRICTED FOR THE BENEFIT OF SKOLNIK INDUSTRIES ONLY. UNAUTHORIZED USE OR DISCLOSURE, COPYING OR OTHERWISE REPRODUCING (IN ANY MANNER) ANY PORTION OF THIS DRAWING WITHOUT PRIOR WRITTEN PERMISSION OF AN AUTHORIZED OFFICIAL OF SKOLNIK INDUSTRIES IS STRICTLY PROHIBITED.	MFG BR	DRW LJT	CHK BL	UNLESS STATED OTHERWISE  (DIMENSIONS IN PARENTHESIS ARE FOR REFERENCE ONLY!!!) ALL DIMENSIONS ARE IN INCHES DO NOT SCALE DRAWING TOLERANCES: FRACTIONS ±1/4X° ± 3° X.X ± 0.2 X.XX ± 0.10 X.XXX ± 0.030	DESCRIPTION 55 GALLON TIGHT HEAD DRUM 1.2 - 1.2 - 1.2 304SS STEEL 1A1/X1.8/300		
	SLS DR	QA MD					
	APR G. Petersen						
	FILE CREATED IN AutoCAD 2002	<div>3<sup>RD</sup></div>			REL. DATE	PART NUM. / FILENAME 8ST5503	REV