

## SPECIFICATIONS

<b>Temperature Range</b>	Ambient to 300 °C
<b>Accuracy</b>	+/- 0.5° up to 100 °C +/- 0.5% of set point > 100 °C
<b>Voltage</b>	24 VAC
<b>Sensor Type</b>	3 wire Pt RTD (low drift, high stability)
<b>Controllers</b>	
Input Voltage	115/230 V, switchable
Output Voltage	10 A/24 VAC
<b>Dimensions</b> (W X D X H)	91 x 140 x 121 mm (excludes baseplate mount)

## PART NUMBER DESCRIPTION

**162-24XX** TGA/FTIR Accessory Flow Cell  
Includes mount for your FTIR, exhaust line and high-temperature O-rings

**Notes:** Replace XX with your spectrometer's Instrument accessory requires selection of IR transparent windows, heated transfer line and temperature controller. The TGA/FTIR accessory requires installation by a trained service representative

### IR Transparent Windows for TGA/FTIR Accessory (must select 2 or more)

160-1320 Window, KBr, 38 x 6 mm  
160-1329 Window, ZnSe, 38 x 6 mm

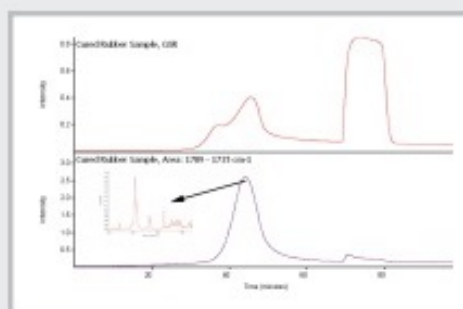
**Notes:** For window compatibility please consult our Materials Properties table, available in Transmission chapter. ZnSe windows should not be used above 250 °C.

### Heated Transfer Line for TGA/FTIR Accessory (must select one)

115-0001 Heated Transfer Line for Shimadzu TGA50 with evolved gas port modifications  
115-0005 Heated Transfer Line for Mettler 851 TGA  
115-0006 Heated Transfer Line for Mettler 851e/LF or TGA-DSC1/2/3 TGA  
115-0007 Heated Transfer Line for TA Instruments Q600 TGA  
115-0008 Heated Transfer Line for TA Instruments Discovery/Q5000R  
115-0009 Heated Transfer Line for TA Instruments Q50/Q500 TGA  
115-0010 Heated Transfer Line for TA Instruments 2050/2950  
115-0011 Heated Transfer Line for Netzsch TGA  
115-0012 Heated Transfer Line for PESTA6/4000 110V TGA  
115-0013 Heated Transfer Line for SETARAM  
115-0014 Heated Transfer Line for PESTA6/4000 220V TGA

## APPLICATION

TGA only measures the mass loss caused by evolved gas events. By coupling TGA with an FTIR, unique spectroscopic data as well as functional group information of the evolved gases may be obtained.



**TGA/FTIR data for cured rubber sample spectrum.** Upper trace is the Gram-Schmidt reconstruct of the TGA evolved gases. Lower trace is a carbonyl reconstruction.

## PART NUMBER DESCRIPTION

115-0017 TGA Universal Transfer Line  
Includes the following adapters; 1/8" to 1/8" union, 1/4" to 1/8" reducing union, 3-mm to 1/8" union, 6-mm to 1/8" reducing union and 6-mm PTFE ferrules  
115-0018 PTFE TGA Transfer Line, 230 °C max. Recommended for TGAs with evolved gas ports made of ceramic or moving furnace heads

**Notes:** Please consult your TGA supplier to ensure compatibility with evolved gas analysis.

Unless noted otherwise, all transfer lines are 1/4" OD, silica-lined stainless steel, 48" in length and offers a maximum temperature of 300 °C.

### Temperature Controllers for TGA/FTIR Accessory (must select one)

076-1120 Dual Digital Temperature Control Module  
076-1130 4-Zone Digital Temperature Control Module for Shimadzu TGA

### Replacement Parts and Options

162-2309 High-Temperature O-Rings, max temp 325 °C, (1 ea.)  
162-2308 High-Temperature O-Rings, max temp 325 °C, (4 ea.)

**Note:** Gas cell requires 4 O-rings. For high-temperature purge tubes and other options, please contact REFLEX Analytical.