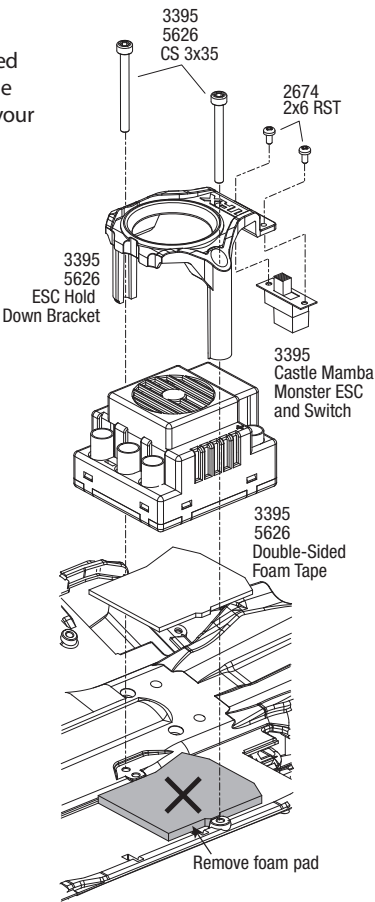
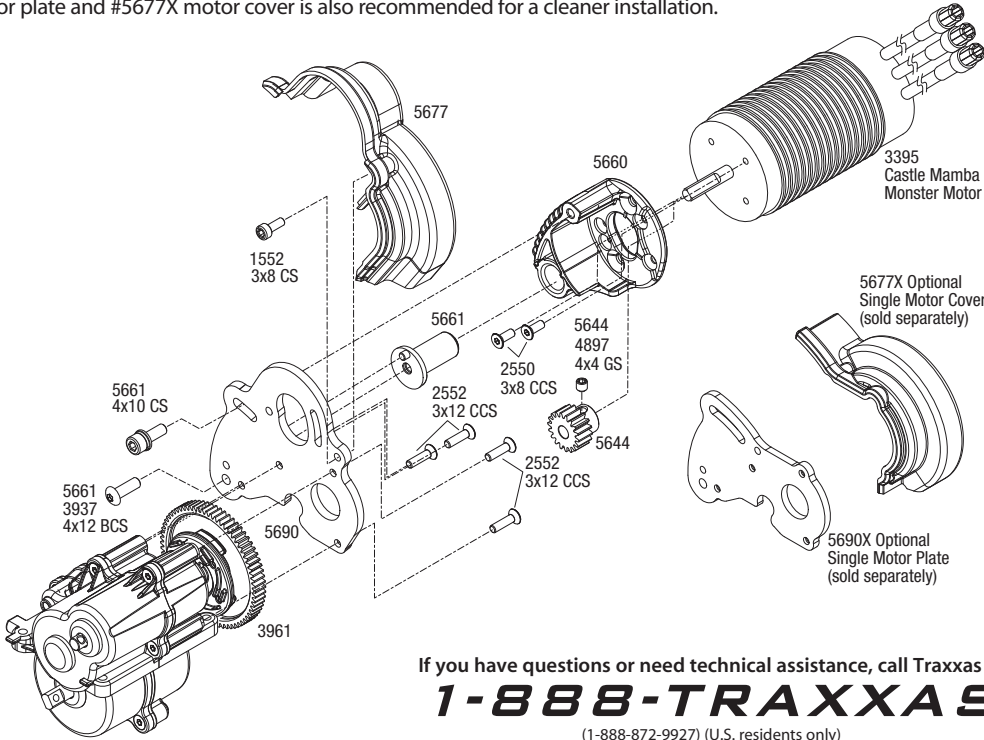


Installation Instructions for Castle Creations Mamba Monster

Covers Part #3395

E-Revo Installation

Refer to the assemblies for installation. Remove the foam pad that is attached to the chassis and replace it with the included double-sided foam tape before installing the electronic speed control and hold-down bracket for added security. Install the included 18-tooth pinion gear with the stock 68-tooth spur gear after the motor is installed to the motor mount. Refer to your Owner's Manual for instructions on properly adjusting the gear mesh. The installation of part #5690X motor plate and #5677X motor cover is also recommended for a cleaner installation.

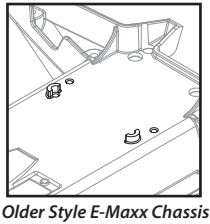


If you have questions or need technical assistance, call Traxxas at
1-888-TRAXXAS
(1-888-872-9927) (U.S. residents only)

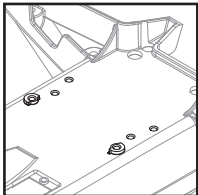
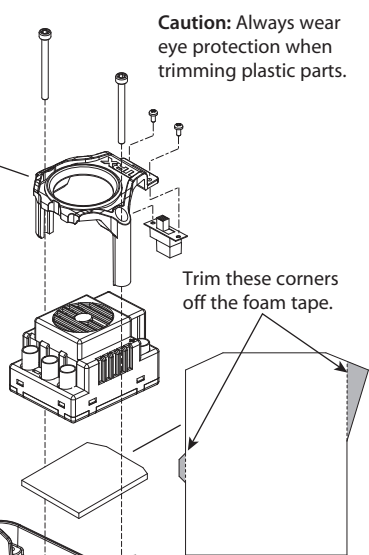
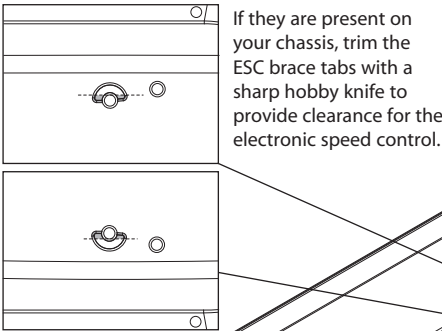
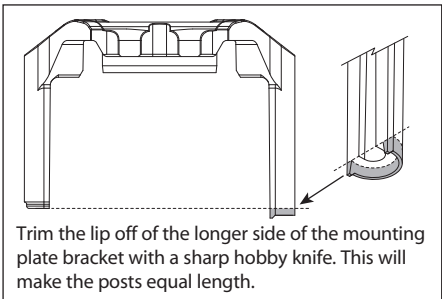
E-Maxx Installation

Note: During the production life of the 3905 E-Maxx, changes were made to the chassis to accept the included ESC hold-down bracket. With a few simple modifications, the included ESC hold-down bracket can be installed on the older chassis style. New style chassis have three ESC mounting positions on the chassis, while older style chassis have two ESC mounting positions. Motor installation is identical for both styles.

Older Style E-Maxx Chassis Installation



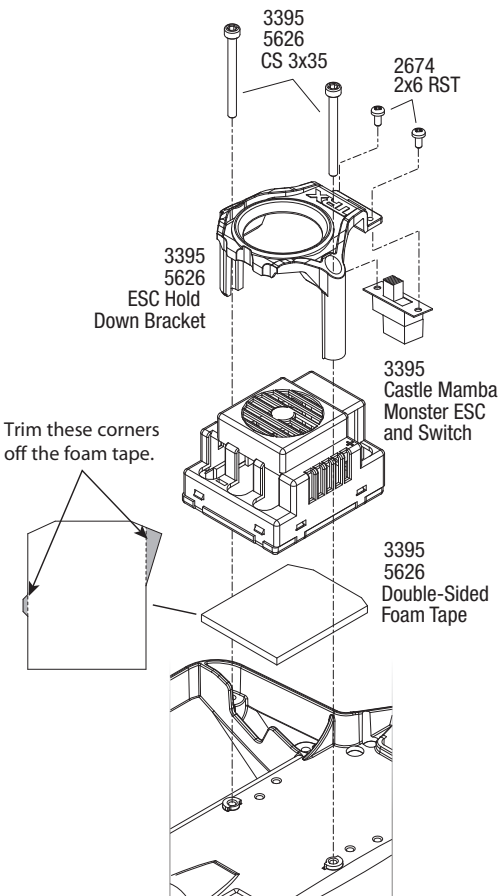
Older Style E-Maxx Chassis



New Style E-Maxx Chassis

New Style E-Maxx Chassis Installation

No modifications to the ESC hold-down Bracket or chassis are needed. Simply use the forward mounting position to install the Castle Creations Mamba Monster ESC. Refer to the assembly below.



E-Maxx Motor Installation

Refer to the assemblies for installation. Install the included 18-tooth pinion gear with the stock 68-tooth spur gear after the motor is installed to the motor mount. Refer to your Owner's Manual for instructions on properly adjusting the gear mesh. The installation of part #3397X motor plate and #3977X motor cover is also recommended for a cleaner installation.

