



4452R Plastic Tuned Exhaust Pipe Installation Instructions

For Nitro Rustler, Nitro Sport, Nitro 4-Tec and First Generation T-Maxx

Important:

- The 4452R plastic tuned pipe is a direct replacement for all TRX 2.5 equipped Nitro 4-Tec and Nitro Rustler vehicles.
- The older generation TRX Pro.15 equipped T-Maxx will require the 5246 molded pipe coupler for the installation of the new 4452R plastic tuned pipe.
- The extended rubber elbow coupler on older generation Nitro 4-Tec, Nitro Rustler and Nitro Sport vehicles will fit the inlet of the new plastic tuned pipe.

1. Begin by locating the 4x4GS. Tap threads into the both of the pressure outlet holes located on the body of the pipe. Tap threads into the holes by threading the grub screw into the hole until the top of the screw is flush with the surface of the pipe body. This is to provide easier installation for the 90-degree pressure fitting.
Note: The 4x4GS will remain in the hole not being used by the 90-degree pressure fitting.

2. Locate the 90-degree pressure fitting and the silicone o-ring. Place the o-ring over the threads of the pressure fitting. Use the illustration to determine which pressure fitting location is right for your vehicle.

3. Thread the pressure fitting with the o-ring into the correct pressure outlet hole.

Important: Do not over tighten the pressure fitting. Turn the pressure fitting until it presses against the o-ring then turn the outlet of the pressure fitting toward the correct direction as indicated by the illustration.

Note: The 4x4GS is used to plug the pressure outlet hole that is not being used by the 90 degree fitting.

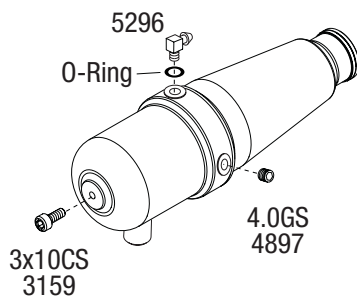
4. Locate the molded pipe coupler 5246 (**not included**) and slide the larger end of the coupler over the inlet of the exhaust pipe until it stops. Firmly secure the coupler with a zip-tie. Slide the open end of the coupler over the exhaust header and point the exhaust stinger towards the correct direction as indicated by the illustration. Firmly secure the coupler to the exhaust header with a zip-tie.
Note: For installation on older generation Nitro 4-Tec, Nitro Rustler and Nitro Sport models; Insert the new plastic tuned pipe into the outlet of the extended rubber coupler and firmly secure the coupler with a zip-tie.

5. Attach the pressure line from the fuel tank the 90 degree pressure fitting. Secure the exhaust pipe to the pipe hanger with the supplied 3x10 CS w/ split washer screw.
Note: Use one of the correct pipe hangers (included) if the existing pipe hanger eyelet does not match up with the hanger boss at the end of the exhaust pipe. This completes the plastic tuned pipe installation.

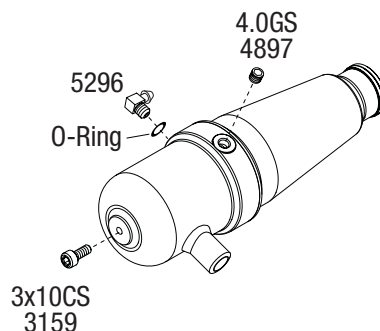
Notice: Hi-speed needle adjustment for TRX Pro.15 owners. Due to the increased exhaust flow characteristics of the new Traxxas plastic tuned pipe 4452R, the hi-speed needle on the Traxxas TRX Pro.15 engines will need to be richened 3/8 turn (counter-clockwise), then retuned for performance.

Traxxas Corporation, 1100 Klein Road, Plano, TX 75074
Phone: 972-265-8000, Toll-free 1-888-TRAXXAS
www.Traxxas.com E-mail: support@Traxxas.com

T-Maxx with Pro.15 engine



Nitro 4-Tec



Nitro Rustler, Nitro Sport, Nitro Stampede

