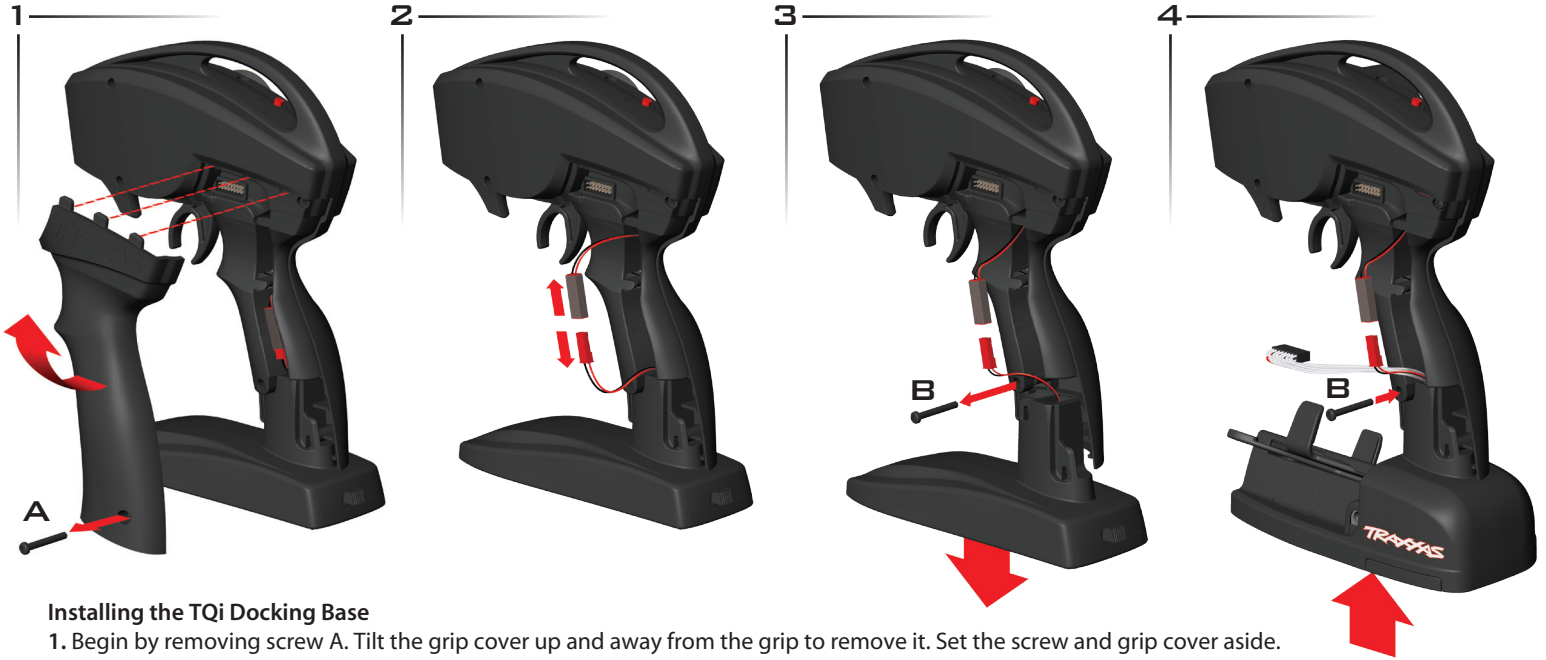


TRAXXAS TQi

DOCKING BASE INSTALLATION INSTRUCTIONS

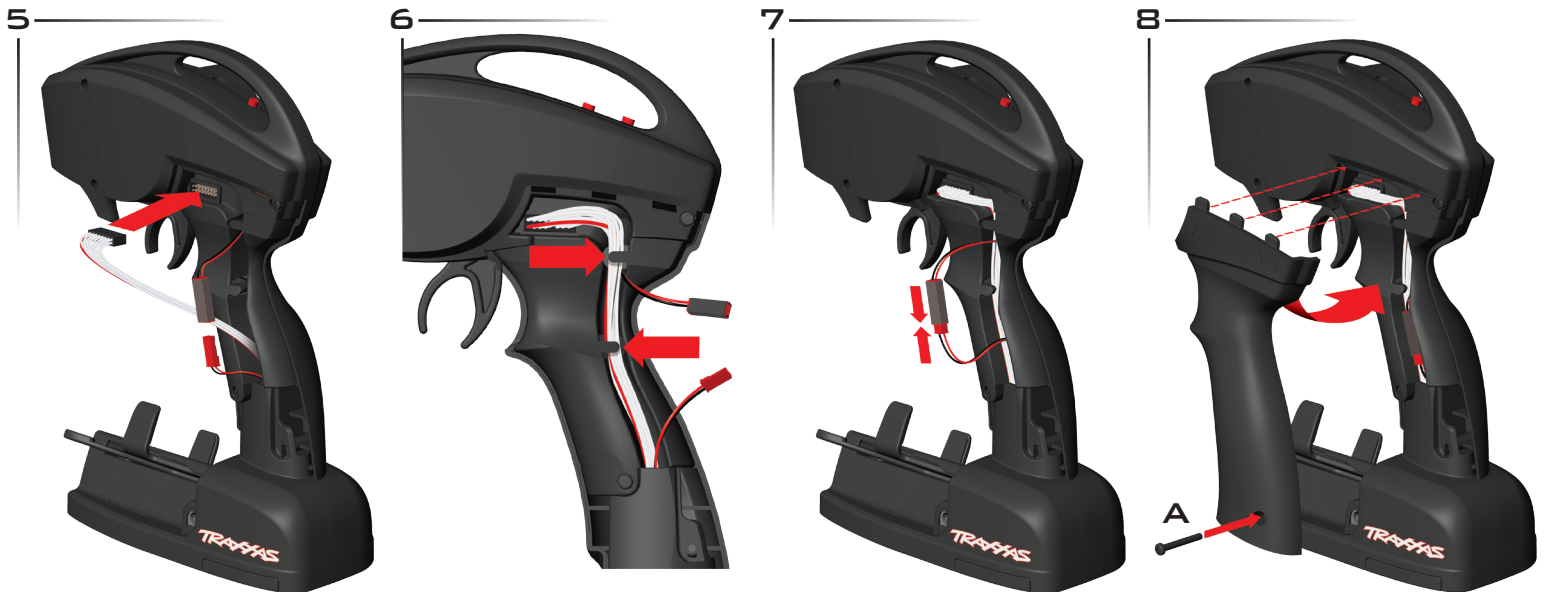
The TQi™ Docking Base is a powerful accessory that allows your Apple® iPhone® or iPod touch® to access the many tuning and setup adjustments built into the TQi transmitter. Take a few minutes to familiarize yourself with the instructions before you install your Docking Base and Mobile Device.

To experience all the features of the TQi with Docking Base, you will need an Apple iPhone (3G, 3GS, 4, 4S) or iPod touch (2nd generation and later versions). You will also need the Traxxas Link® application, which you can download from the Apple App Store™. The App Store may be selected on your iPhone or iPod touch with internet access, or downloaded from iTunes.®



Installing the TQi Docking Base

1. Begin by removing screw A. Tilt the grip cover up and away from the grip to remove it. Set the screw and grip cover aside.
2. Unplug the battery wire harness.
3. Remove screw B to release the base from your transmitter.
4. Slide the transmitter's grip over the Docking Base. **Take care not to pinch the Docking Base wiring harness or the battery plug harness between the base and grip.** The holes for screws A and B should line up easily. Install screw B.



5. Plug the Docking Base wire harness into multi-pin port on the transmitter. Note the orientation of the plug, it only fits one way.
6. Tuck the wires into the channel. Make sure the wires are beneath the tabs (arrowed).
7. Plug the red Docking Base battery harness and the red transmitter battery harness together and tuck them into the channel.
8. Insert the grip cover into the slots at the top of the grip, then pivot the cover down so the hole for screw A lines up with the hole in the Docking Base. Snap the upper corner of the grip cover into place. Insert screw A and tighten to complete the assembly.

Installing Your Mobile Device

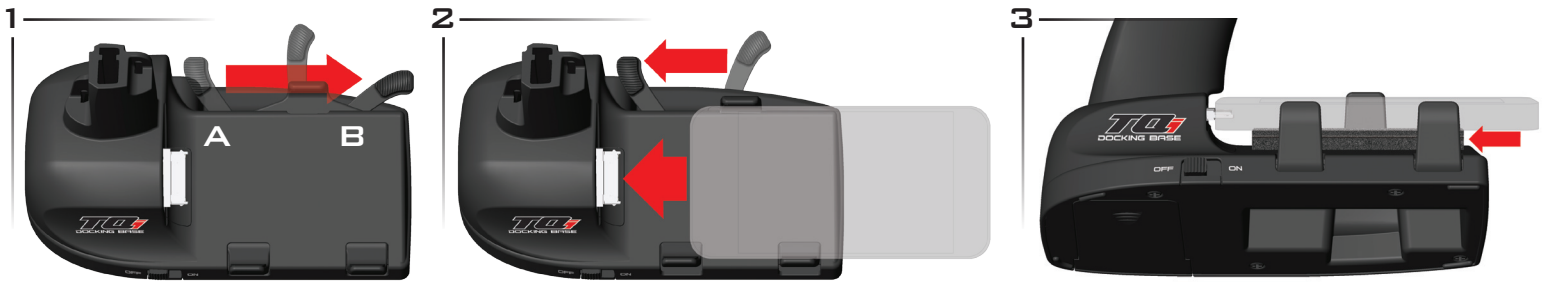
The TQi™ Docking Base has a unique clamping mechanism that allows the Apple® iPhone® and iPod touch® to be easily installed and removed. The clamp's self-adjusting design allows it to accommodate the wide variety of protective cases available for Apple products. Follow these steps to install your mobile device:

1. Swing the Docking Base Clamp lever from position A (locked) to position B (unlocked).
2. Install your mobile device by sliding it onto the connector.
3. Ensure your mobile device is parallel with the Docking Base. Slide the included foam pads beneath the mobile device so it is held parallel with the docking base when supported by the pads. The pads have thicknesses of 1, 2, 3 and 4mm, choose the best combination for your device and case, if used. See the chart below to find the correct pad combination for iPhone and iPod touch models without accessory cases.
4. Make certain your mobile device slides directly onto the connector when slid over the foam pads. When you are satisfied with the fit, peel the backing from the foam pads and apply them to the Docking Base.
5. Close the Docking Base Clamp by moving it to position A. Confirm your mobile device is snug and securely held in place.

Optional: The Docking Base Clamp's 'fingers' have soft gripper pads on them to hold un-cased devices. If your device is in a soft rubber case, the gripper pads may be removed for easier device installation and removal.

Foam pad combination recommendations (without accessory cases):

iPod touch 2nd & 3rd Generation	4mm + 3mm (7mm total)
iPod touch 4th Generation	4mm + 3mm + 2mm (9mm total)
iPhone 3GS	3mm + 2mm (5mm total) or 4mm + 1mm (5mm total)
iPhone 4	4mm + 3mm + 1mm (8mm total)



Installing Batteries in the TQi Docking Base

Your TQi transmitter uses 4 AA batteries. The battery compartment is located in the base of the transmitter.



1. Remove the battery compartment door by pressing the tab and sliding the door open.
2. Remove the battery holder. Install the batteries in the battery holder. Correct orientation is indicated in the battery holder. Make sure the battery holder is plugged into the transmitter.
3. Reinstall the battery door and snap it closed.
4. Turn on the transmitter and check the "ON" LED for a solid green light. **Note:** Switching the transmitter on with your mobile device installed will automatically launch the Traxxas Link application.



If the status LED flashes red, the transmitter batteries may be weak, discharged or possibly installed incorrectly. Replace with new or freshly charged batteries. The power indicator light does not indicate the charge level of the battery pack installed in the model. **Note:** The Docking Base will charge your mobile device as long as the transmitter is turned on.



TQi Docking Base Battery Charging Jack

The Docking Base incorporates a standard charging jack for use with optional Traxxas rechargeable NiMH battery pack (#3037) and wall charger (#6545) (each sold separately). **Note:** The charger and charging jack will not charge rechargeable AA batteries installed in the standard 4-cell AA battery holder supplied with the TQi. **Only use the charger and charging jack with the #3037 Traxxas NiMH battery.**



Optional #3037 Traxxas NiMH battery installation



Made for
 · iPod touch (4th generation)
 · iPod touch (3rd generation)
 · iPod touch (2nd generation)

· iPhone 4S
 · iPhone 4
 · iPhone 3GS
 · iPhone 3G

"Made for iPod" and "Made for iPhone" mean that an electronic accessory has been designed to connect specifically to iPod and iPhone, respectively, and has been certified by the developer to meet Apple performance standards. Apple is not responsible for the operation of this device or its compliance with safety and regulatory standards. Please note that the use of this accessory with iPod and iPhone may affect wireless performance.

iPhone and iPod touch are trademarks of Apple Inc., registered in the U.S. and other countries.

If you have questions or need technical assistance, call Traxxas at
1-888-TRAXXAS
 (1-888-872-9927) (U.S. residents only)

TRAXXAS.COM

Traxxas, 1100 Klein Road, Plano, TX 75074, Phone: 972-265-8000, Fax: 972-265-8011, e-mail: support@Traxxas.com