

Welcome to the World of
E-Collar Technologies, Inc.

800TS/1200TS
Owner's Manual

Visit [Gun Dog Supply.com](http://GunDogSupply.com)
Order a E-Collar Technologies 800TS/1200TS
See other E-Collar Technologies Products

Welcome to the World of E-Collar Technologies, Inc.

800TS/1200TS Owner's Manual

800TS/1200TS

Remote Education Collar

Thank you for purchasing the 800TS/1200TS Remote Education Collar from E-Collar Technologies, Inc. We have made every attempt to provide you with the most technologically advanced product using the most stringent quality and manufacturing standards.

We are confident you will be pleased with the results you will attain with the 800TS/1200TS. Please remember you will get better results with the use of lower stimulation combined with consistent training techniques.

The use of high levels of stimulation should only be used as a last resort and in life-threatening situations.

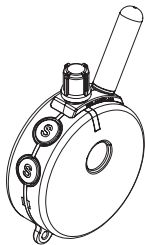
Good luck with your training and please feel free to contact us should you have any questions.

1-855-326-5527 or 1-855-ecollar

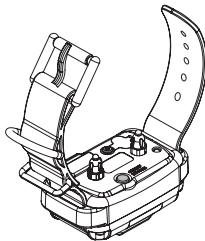
CHARACTERISTICS

- Range : 1 Mile (800TS) / 1 Mile Plus (1200TS)
- Three Stimulation Modes Supported
(Momentary, Continuous, and Combo Mode)
- Tapping Sensation
- Employs Ni-MH Rechargeable Batteries
- Convenient Intensity Dial for Quick Adjustment
- Stimulation Levels Adjustable from 0 to 100
- Collar Receiver Light for Night Tracking
- Lock and Set Stimulation Feature
- Stimulation Boosting Mode Provides Instant Responses to
Emergency Situations
- User Adjustable Boosting Levels
- Completely Waterproof

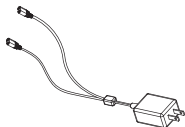
- Transmitter



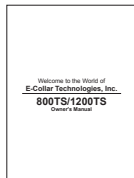
- Collar Receiver with Strap and 5/8" Contact Points



- Battery Charger



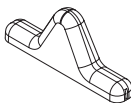
- Owner's Manual



- Contact Points 3/4"



- Test Light



- Contact Point Tool



- Lanyard

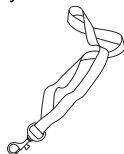



TABLE OF CONTENTS

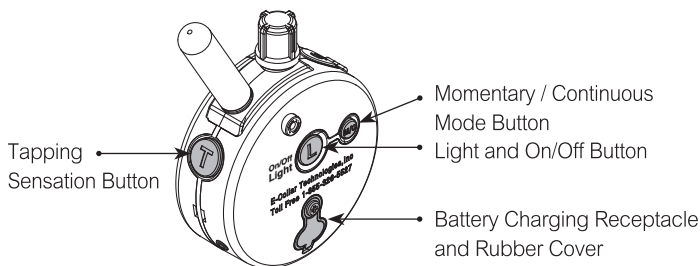
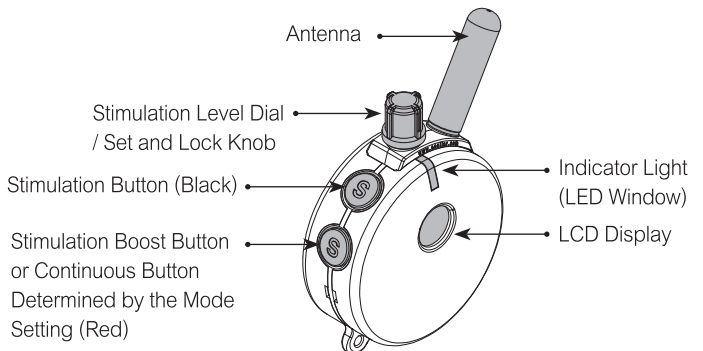
• Safety and General Information	05
• Transmitter Parts	06
• Collar Receiver Parts	07
• Charging the Batteries	08
• Turning Your E-Collar On/Off	11
• The LCD Display Features	12
• Button Functions	13
• Changing the Intensity Level of Stimulation	17
• Lock/Unlock the Stimulation Intensity Level	20
• Indicator Light	21
• Lost Transmitter Mode	22
• Testing Your E-Collar	23
• Reception	24
• Replacing the Contact Points	25
• Correctly Fitting the Collar	26
• Warranty	27
• Accessories	28

SAFETY AND GENERAL INFORMATION

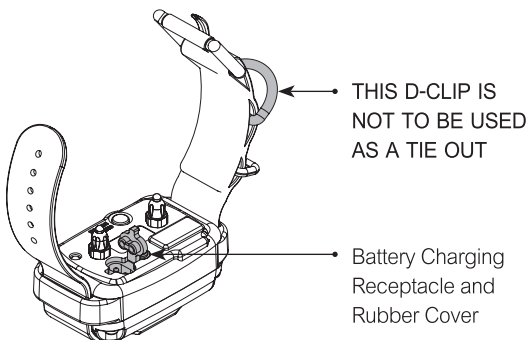
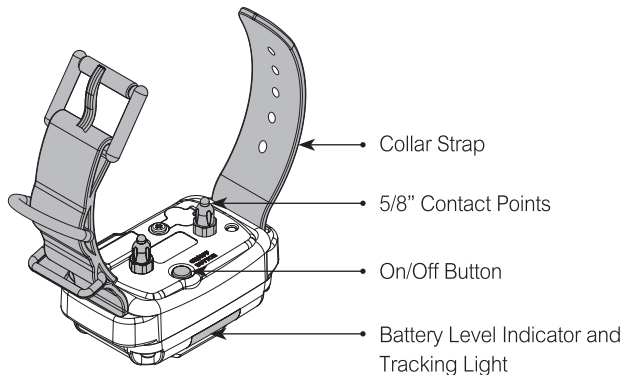
- The 800TS/1200TS Education Collar complies with all National and International Standards and Guidelines for human exposure to radio frequency electromagnetic energy.
- Nearly all electronic devices are susceptible to electromagnetic interference (EMI) if inadequately shielded or designed without precautions to EMI.
- 800TS/1200TS E-Collar transmitters manufactured by E-Collar Technologies, Inc. comply with Article 15 of the FCC rules and operate under Part 95 of FCC regulations.
- **IMPORTANT NOTICE**
 1. To avoid Electromagnetic Interference and/or compatibility conflicts, please turn off your transmitter and collar receiver in any facility where posted notices instruct you to do so. Never use your equipment in close proximity of a Hospital or Health Care Facility or enter the facility without turning off both units.
 2. An FCC license is not needed to operate 800TS/1200TS E-Collar transmitters. However, any change or modification made to the transmitter, including the supplied antenna, without the expressed written approval of E-Collar Technologies, Inc. could void your authority to operate.

TRANSMITTER PARTS

 See pages 13 - 16 for button functions



COLLAR RECEIVER PARTS



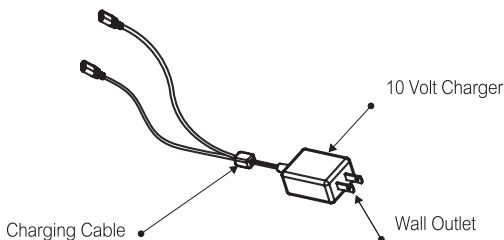
08

CHARGING THE BATTERIES

The most important fact to know about Nickel Metal Hydride batteries is they do not like to be fully discharged, permanent damage may occur. If this happens to your system it is best to charge them up (10 – 12 hours only) and discharge (receiver and transmitter on) the system one time. It is best to charge them before they get to yellow, every night is acceptable. Every 6 months it is good practice to let them run down to red and immediately charge them up.

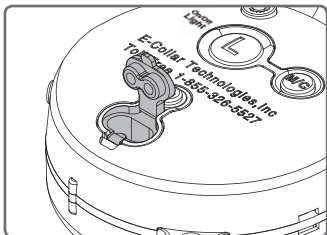
Long term storage is not suggested, the batteries will need to be replaced unless the unit is charged regularly. At least once a month is the preferred charging regimen for stored e-collars with NiMH batteries.

Battery Charger

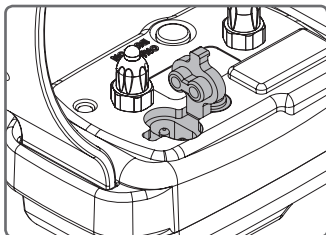


CHARGING THE BATTERIES

Transmitter Battery Charging
Receptacle and Rubber Cover



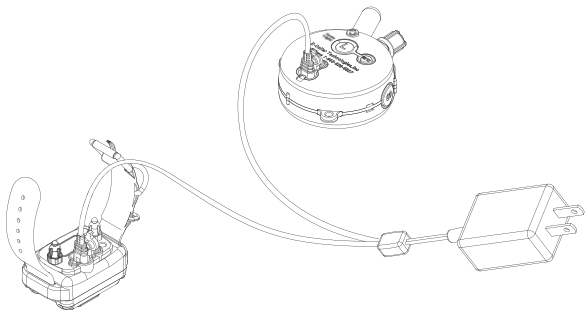
Collar Receiver Battery Charging
Receptacle and Rubber Cover



- The indicator light will be solid red during charge and remain solid red even after units are fully charged.
- The charge plug has a small indentation on it that guides the charger connector into the correct position.

10

CHARGING THE BATTERIES



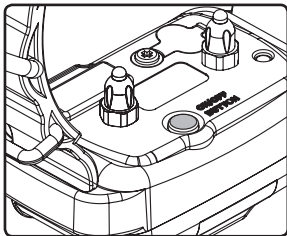
- **Battery Care:**

It is important to fully charge the batteries and fully discharge them for the first three uses. After that it is not necessary to fully discharge the batteries with each use, because NiMH do not exhibit “memory effect” like other rechargeable battery types.

It is recommended that every six months you recondition the batteries by fully discharging them and then fully charging them, this will ensure you get the rated 500 charges per battery.

TURNING YOUR E-COLLAR ON/OFF

COLLAR RECEIVER ON/OFF BUTTON



- To turn the Collar Receiver On or Off :
Press the power button to turn collar receiver on/off.

TRANSMITTER ON/OFF BUTTON

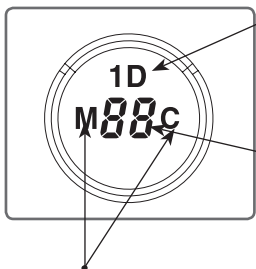


- To turn the Transmitter On or Off :
Press the “L” light button for more than 2 seconds.
If “L” light button is pressed less than 0.5 seconds, it will turn On/Off Tracking lights of Collar Receiver.

12

THE LCD DISPLAY FEATURES

- Press down on the Stimulation Level Knob or press any button to wake up the LCD display. Please note that if the collar receiver is on, pressing the stimulation buttons and/or the tapping sensation button will trigger the collar receiver.



Flashing "1D" indicates the stimulation is ready for adjustment. Solid "1D" indicates stimulation is "Locked", tap the knob down to unlock and adjust stimulation.

Displays the Stimulation Level :
"0" means no stimulation
and "HI" means the highest level(100)

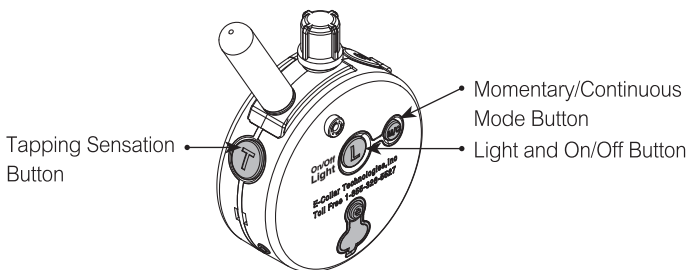
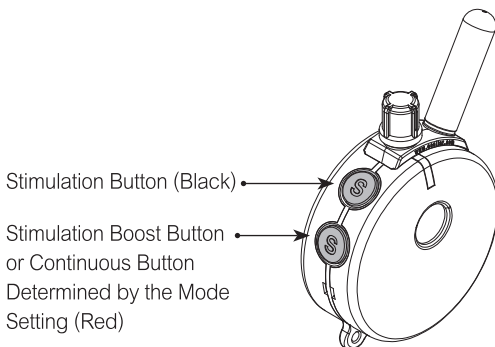
Indicates current stimulation mode: "M" indicates Momentary/
Momentary Boost, "C" indicates Continuous/Continuous Boost,
Both "M" and "C" illuminated indicates Momentary/Continuous/
Both Button Boost. "M" and "C" mode is recommended for first
time e-collar users.

BUTTON FUNCTIONS

TRANSMITTER

The 800TS/1200TS transmitter is equipped with five control buttons, LCD display, and an adjustable dial.

For long range use hold the transmitter up like the Statue of Liberty and never allow the antenna to touch anything as it will decrease the range. Power lines and foliage will also reduce the range.



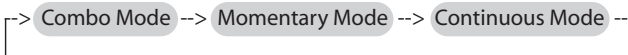
BUTTON FUNCTIONS

Three Programmable Modes are provided based on the status of M/C button. Two Stimulation buttons will be working differently.

M/C Button	Combo Mode	Momentary Mode	Continuous Mode
Display	M and C	M	C
S (Black)	Momentary	Momentary	Continuous
S (Red)	Continuous	Momentary Booster	Continuous Booster
S(Black)+S(Red)	Momentary Booster	N/A	N/A
S(Red)+S(Black)	Continuous Booster	N/A	N/A
T	Tapping Sensation	Tapping Sensation	Tapping Sensation

Momentary/Continuous Mode Button "M/C"

- M/C Button on the backside of the transmitter allows the user to easily switch between the three stimulation modes.



- Combo Mode : In this mode, both "M" and "C" icon will be displayed simultaneously. Stimulation (Black) Button "S" will send momentary stimulation and Stimulation Booster (Red) Button "S" will send continuous stimulation.

- Momentary Mode : Stimulation (Black) Button "S" and Stimulation Booster (Red) Button "S" will send Momentary Stimulation.

In this mode, "M" icon will be displayed in the LCD window.

- Continuous Mode : Stimulation (Black) Button "S" and Stimulation Booster (Red) Button "S" will send Continuous Stimulation.

In this mode, "C" icon will be displayed in the LCD window.

BUTTON FUNCTIONS

- Boosting Stimulation in Combo Mode

Momentary boosting is accomplished by first sending a momentary stimulation pulse “S(Black)” to the dog and keeping the button pressed and then applying the Continuous “S (Red)” Button.

Continuous boosting is accomplished by first pressing the Continuous “S (Red)” Button keeping the button pressed and then applying the Momentary “S (Black)”. The over-stimulation feature will only allow 10 seconds of continuous stimulation.

Stimulation Button “S(Black)”

- Sends momentary or continuous stimulation to the collar receiver based on the state of Momentary/Continuous Button.
- Pressing stimulation button in continuous mode will send stimulation to the collar receiver for the duration of the button being pressed. After 10 seconds the Over-Stimulation feature will stop the stimulation until the button is released and pressed again.

Stimulation Booster Button “S(Red)”

- Send momentary or continuous boosted stimulation.
- The default value of the boosted level is 20, it can be adjusted to any value between 1 and 60. Smaller and more sensitive breeds should use levels 1 through 20, larger more stubborn breeds can use 20 through 60.
- If current level is higher than “100-boosting level”, output intensity level will be 100 (HI).
- Useful function in emergency situations.

BUTTON FUNCTIONS

- If the state of Momentary/Continuous Button is in Combo mode, this button will be used as Continuous Stimulation Button.

Tapping Sensation Button “T”

- Sends education tapping sensation to the collar receiver.

Light Button(On Back) “L”

- When pressed less than 0.5 seconds, it will turn On or Off the high intensity night tracking light which is good for finding your dog after dark.

- * 1st pressing will make the collar receiver light flashing.
- * 2nd pressing will make the collar receiver light turn solid.
- * 3rd pressing will make the collar receiver light turn off.
- * When the button is pressed, “L” will be displayed.

- When pressed for more than 2 seconds, it will turn On or Off the transmitter.

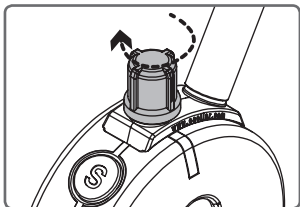
How to Change Boosting Level

- Default boosting level is 20.

Please follow the procedure below to change the boosted level.

1. Change the mode to Momentary Mode (Press M/C button until “M” is displayed)
2. Change the intensity level to “0”
3. Press S(Black) button for more than 5 seconds to enter the Booster Level Change Mode.
4. The intensity level display will start to blink. Rotate the dial to change the boosted level from 1 up to 60.
5. Press S(Black) button again to save new level and exit from Booster Level Change Mode.
6. If any other button is pressed or 20 sec passes, Booster Level Change Mode will be cancelled.

CHANGING THE INTENSITY LEVEL OF STIMULATION



Rotating clockwise increases the stimulation level and conversely, rotating counter-clockwise lowers the stimulation level.

It is highly recommended that the user practices changing levels and modes before putting the collar receiver on the dog.

Setting the correct stimulation level for your dog is very important. To set your “conditioning” stimulation level, put the collar receiver (see page 26 for proper fitting technique) on your dog. Let him/her get used to the collar receiver for a couple of hours.

While watching your dog, turn the level to “0” and press the continuous stimulation button. Slowly turn the stimulation up at a rate of approximately 2-3 levels per second. When your dog first perceives the stimulation, usually between 5 and 30, release the button.

This is your “conditioning” stimulation level. You may need to increase the “conditioning” level a few levels to get your dog to respond, some dogs are more stubborn and need more stimulation. The “corrective” level is typically 10 to 30 levels higher than the “conditioning” level.

18

CHANGING THE INTENSITY LEVEL OF STIMULATION

USING THE E-COLLAR IN CONTINUOUS AND MOMENTARY MODES

For example, if you want your dog to come to you and heel, you can hold the button down until your dog comes and heels or if jumping is an issue, you can hold the button down anytime their front paws are off the ground. Your dog will learn that he/she controls the stimulation.

Setting the “Corrective” stimulation level is a little more difficult due to the wide differences in temperaments and stimulation tolerance among the many breeds of dogs. On average, it is normally 20 to 40 levels higher than the “Conditioning” level.

This higher level will only be used in “Momentary” mode as not to over-stimulate your dog.

CHANGING THE INTENSITY LEVEL OF STIMULATION

IMPORTANT TRAINING TIPS

E-Collars should be used to reinforce commands your dog already knows. It is not a replacement for basic leash obedience training, but a tool to allow you to better communicate to your dog.

For best results, use the least amount of stimulation required to get compliance from your dog. A calm and consistent approach to training will always produce better long term results.

It is highly recommended that aggressive dogs be taken to a professional trainer for evaluation before e-collar use.

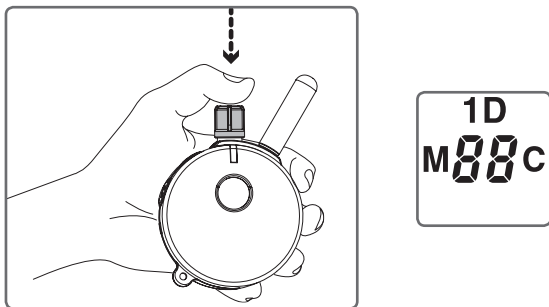
There are many different e-collar training techniques recommended by a variety of professional trainers. We believe you, the owner of the dog, can best determine the most successful technique for your dog. YouTube has many videos demonstrating these varying techniques by simply searching “e-collar training” or “remote dog training techniques”.

Good Luck with your training!

* CAUTION : Do not put the 800TS/1200TS E-Collar receiver on a human being.

* WARNING : E-Collar Technologies, Inc. is not responsible for any misuse of the 800TS/1200TS E-Collar and loss and damages as a result of a dog bite. Aggressive dogs should be evaluated by a professional trainer before e-collar use.

LOCK/UNLOCK THE STIMULATION INTENSITY LEVEL



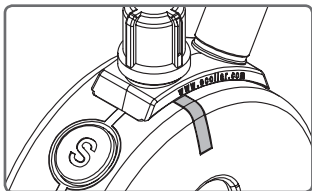
How to Lock/Unlock the Stimulation Level

Set the desired stimulation level and then push down on the top of the stimulation dial until you see “1D” light up on the top portion of the LCD display.

If the stimulation level doesn't change when you rotate the stimulation knob, you have successfully locked the stimulation level.

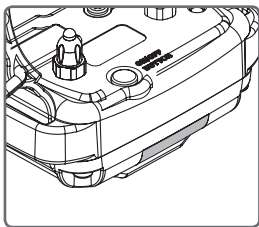
To unlock the stimulation level simply press the stimulation knob again and it will unlock the stimulation level.

INDICATOR LIGHT



- **TRANSMITTER INDICATOR LIGHT**

Battery Charge level is signified by the flashing light going from “green” (ready for use) to “amber” (need to charge soon) and then to “red” (charge immediately). When any of the function buttons are pressed the indicator light will turn “red” to signify activation.



- **COLLAR RECEIVER INDICATOR LIGHT**

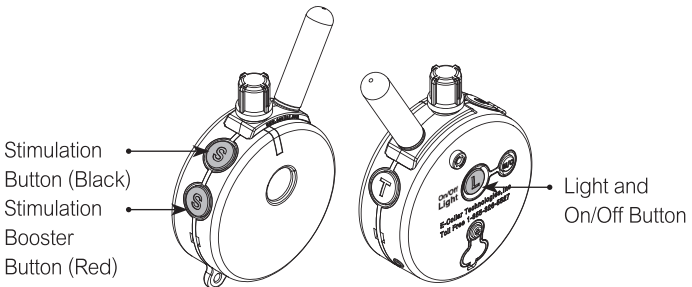
Battery Charge level is signified by the flashing light going from “green” (ready for use) to “amber” (need to charge soon) and then to “red” (charge immediately). When any of the function buttons of the transmitter are pressed, the indicator light on the collar receiver will flicker “red” indicating a control signal has been successfully received.

LOST TRANSMITTER MODE

Your 800TS/1200TS E-Collar transmitter allows the user to turn on a 6 hour timer. After 6 hours the transmitter will begin beeping providing the ability to locate the transmitter in tall grass.

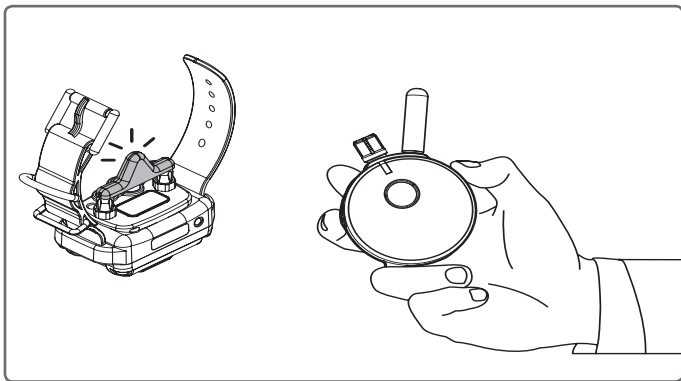
Lost transmitter mode is activated by first pressing light button and then simultaneously pressing the stimulation Button(Black) when the intensity level is zero. Three short beeps will sound confirming the activation of the locator timer.

Lost transmitter mode is turned off by first pressing light button and then simultaneously pressing the stimulation Booster Button(Red) when the intensity level is zero. Two short beeps will sound confirming the timer has been turned off.



Turn off the lost transmitter beeper by simply turning the transmitter off and back on.

TESTING YOUR E-COLLAR



Hold the test light onto the contact points as shown in the above figure. With both units on and green lights flashing, press the stimulation buttons at Continuous Mode while turning the stimulation up and down, the test light should brighten as you go higher in stimulation. The collar receiver light will flicker red while the stimulation is on. Next, press the Tapping Sensation button to test the tapping sensation feature. Your 800TS/1200TS E-Collar is ready to use.

24

RECEPTION

To obtain the maximum range hold the transmitter like the torch on the Statue of Liberty. Keep the antenna away from your body or fingers at all times, touching the antenna will greatly reduce the range.



[Long Range]



[Medium Range]



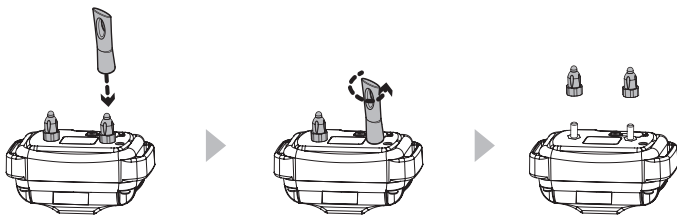
[Short Range]

REPLACING THE CONTACT POINTS

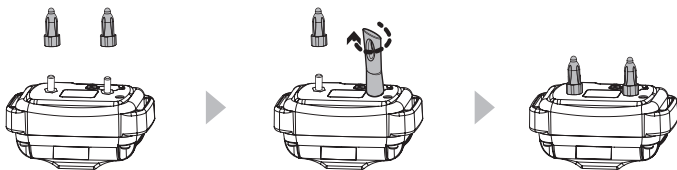
The standard 5/8" contact points are used for most dogs.

Thicker fur breeds require the longer 3/4" contact points.

Replace the 5/8" contact points by following the instructions below using the enclosed contact point tool.



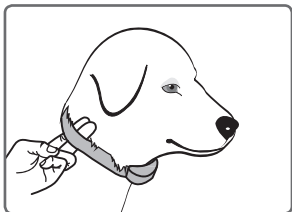
1. Loosen both contact points by rotating the contact point counter-clockwise using the contact point tool.



2. Install the 3/4" contact points onto the bolt and tighten the contact points by rotating them clockwise with the contact point tool.

* For short haired breeds such as boxers, dachshund, pit bulls, etc, please contact customer service and get the micro-probe contact points.

CORRECTLY FITTING THE COLLAR



The collar should be adjusted to allow the “contact points” to have direct contact with the skin.

You should be able to fit a couple of fingers between the collar strap and your dog.

Too tight poses the risk of skin irritation and discomfort.

Too loose and the contact points will not be able to administer the stimulation reliably and can cause skin irritation due to chafing.

Short hair breeds may need the micro-probes offered as an accessory item, contact customer service for details. The optimal position for the collar receiver is on either side of the dog’s windpipe.

IMPORTANT NOTICE

To prevent the occurrence of skin irritations the Collar Receiver should never be worn for more than 12 hours per day.

Should your dog experience skin irritations from over exposure to the contact points remove the collar receiver unit immediately and stop using your e-collar until all skin irritations are totally healed.

Antibiotic ointment will aid in the healing process. Some dog breeds have very thick fur that requires special contact points, please contact our customer service or visit www.ecollar.com for more information.

To Register for the Limited Lifetime Warranty :

To register your 800TS/1200TS product, please log onto our website at www.ecollar.com, click on the warranty registration link and fill out the required information. Please register your product within 30 days of your purchase. If you do not have access to a computer, please call our toll free number of 1-855-326-5527 and one of our customer service representatives will register your product for you. In the event the product is not properly registered proof of purchase will be needed to obtain warranty work. Product returns without proper registration and proof of purchase will be subject to a warranty start date estimated by your units serial number. Misuse, improper maintenance, lost units are not covered by this warranty.

Limited Lifetime Warranty :

Your Limited Lifetime Warranty begins the date of the original purchase. For the first two years both parts and labor are covered 100%. After the two year replacement warranty has expired the Limited Lifetime Warranty will cover the material to repair your e-collar system not including the accessories and antennas. The labor and shipping costs are not included and are the responsibility of the customer. Labor fees will be calculated based on the extent of the work performed. The Limited Lifetime Warranty will expire 5 years from the date the model is discontinued by E-Collar Technologies, Inc. Any attempt by the user to repair or open the e-collar including battery replacement will void the warranty.

28

ACCESSORIES

- Micro-Probes Contact Points



- Thick-Hair Contact Points



- Car Charger



- Belt Clip



CONTACT INFORMATION



E-Collar Technologies, Inc.
2120 Forrest Park Drive
Garrett, IN 46738
Toll-Free 1-855-326-5527
Toll-Free Fax 1-855-226-5527
www.ecollar.com
sales@ecollar.com
customerservice@ecollar.com

©0130923 E-Collar Technologies, Inc. All rights reserved.

MEMO

MEMO

MEMO



E-Collar Technologies, Inc.

2120 Forrest Park Drive

Garrett, IN 46738-1887

1-855-326-5527 (Toll Free)

1-855-226-5527 (Toll Free Fax)

sales@ecollar.com

www.ecollar.com

Patents Pending

© 2013 E-Collar Technologies, Inc.



Thank you for Supporting American Workers