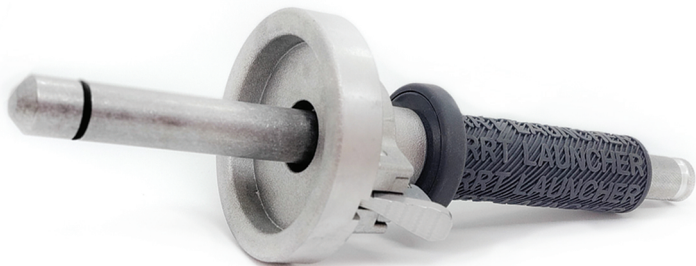




PRO MODEL **RRT LAUNCHER** HAND HELD  
LAUNCHER

# OPERATING INSTRUCTIONS

Visit [Gun Dog Supply.com](http://GunDogSupply.com) | Order a RRT Launcher | See other RRT Products



FULLY READ THE WARNINGS AND  
INSTRUCTIONS BEFORE OPERATING

**PLEASE READ CAREFULLY BEFORE ATTEMPTING TO OPERATE**

## **RRT LAUNCHER INSTRUCTIONS**

### **IMPORTANT!**

**TAKE SPECIAL HANDLING CARE AND SAFETY PRECAUTIONS!**

Your RRT Launcher is not a firearm, but the same handling, care and safety precautions must be exercised. Your RRT Launcher is provided with certain built-in safety features, but are not substitutes for safe handling practices, which include the use of ear and eye protection as well as the use of heavy leather gloves.

### **DISCLAIMER**

Any use or modification of the RRT Launcher not in conformity with the manufacturer's instructions as described in this user's manual is **AT THE SOLE RISK AND RESPONSIBILITY** of the individual performing such unauthorized use and/or modification. Direct any inquires regarding use to Specialty Products Company prior to use or continued use of this product.

## **>> RRT LAUNCHER INSTRUCTIONS**

The RRT Launcher is a practical aid for training retrievers. Training dummies designed for the use with it can be power thrown two to three times farther than hand thrown dummies. They are useful on land or water. Extra dummies can be used to throw doubles, triples, etc. The RRT Launcher uses blank power charges for throwing power.

The accompanying report eliminates the need for a blank pistol.

## >> MAINTENANCE

User must thoroughly clean the barrel, chamber and hinge areas with a good gun cleaning solvent after each use. ***Improper maintenance and failure to properly operate the RRT Launcher may result in serious injury or death.***

You may purchase the RRT launcher Cleaning Kit at any of our retailers listed on our website **[www.rrtlauncher.com](http://www.rrtlauncher.com)**. A small amount of gun oil applied to the hinge area after cleaning will help ensure smooth operation. Cleaning of the chamber can be enhanced by using a .22 caliber wire brush.

Also thoroughly clean and dry the inside of the dummy tube after each launch. Be certain that prior to each time you launch the dummy from your launcher that it is free of debris both internally and externally. Failure to properly maintain the aluminum insert tube in your dummy may result in serious injury or death.

A rubber “O” Ring in a groove near the outer end of the barrel provides a seal for the release gases from the power charge. This “O” Ring will wear, causing some of the gases to escape, thereby reducing the flight distance of the dummy.

Apply a thin coat of Vaseline, or any other lubricant safe for use on rubber components, to prevent drying and cracking of the “O” Ring. Replacement “O” Rings are available from our retailers on our website.

## >> BLANK POWER CHARGES

Choose your power charge based on the distance you wish to throw the dummy. Use only those charges intended for the RRT Launcher that are available at a certified RRT Launcher retailer.

- **Light Green Load - Distance of approximately 150'**
- **Medium Yellow Load - Distance of approximately 200'**
- **Heavy Red Load - Distance of approximately 300'**

***Your RRT Launcher is not a firearm, but the same handling, care and safety precautions must be exercised.***

Your RRT Launcher is provided with certain built-in safety features, but are not substitutes for safe handling practices, ***which include the use of ear and eye protection, as well as the use of heavy leather gloves.***

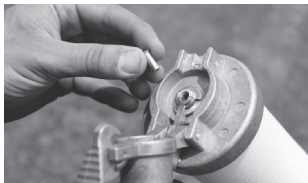
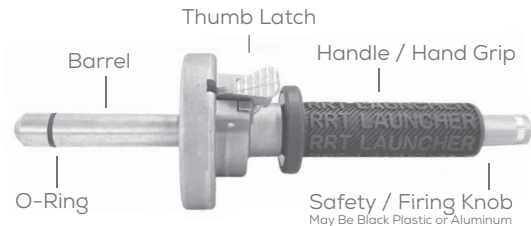
## >> WHAT TO EXPECT WHEN LAUNCHING

- With the dummy, you are firing what is equivalent to a six to eight ounce bullet. A heavy recoil and loud report should be expected. ***ALWAYS use eye and ear protection and wear heavy leather gloves when firing.***
- ***Expect a loud report when the launcher is fired.*** Prolonged exposure to loud report may effect hearing to user, surrounding persons and animals.
- Expect heavy recoil from the use of the product, especially when using red power loads. ***Exercise caution at all times.***

## >> PREPARATION FOR FIRING

- 1) Place a RRT training dummy over the barrel and slide it down. The distance of the throw can be controlled by how far the dummy is placed down the barrel -all the way for maximum distance, less for shorter throws.
- 2) Open the breech by pressing the thumb release/latch located in the middle of the launcher just above the hand grip. The launcher will now pivot open exposing the open chamber for receiving the blank power charge.
- 3) Fully seat the charge in the chamber as you would a single shot rifle or shotgun.
- 4) Close the unit and press the thumb latch to insure that it is fully closed.

## >> NOTE : **FOR OUTDOOR USE ONLY!**



## >> LAUNCHING

Firmly grasp the launcher handle in one hand with the thumb latch oriented toward the shoulder of the holding arm. The heel of the holding hand should be facing the thumb latch and your fingers should be wrapped firmly around the grip.

Your thumb will be closest to the Pull Knob. Bend the elbow slightly and position the launcher about waist high and one foot from you body.

Aim about 45° from the horizontal off to your side toward the target area. Pull the firing knob back to its fully extended position and release it to launch.

## >> NOTE :

**NEVER DRY FIRE YOUR RRT LAUNCHER!**

## >> WARNING

- With the dummy, you are firing what is equivalent to a six to eight ounce bullet. A heavy recoil and loud report should be expected. ALWAYS use eye and ear protection and wear heavy leather gloves when firing.
- Expect a loud report when the launcher is fired, prolonged exposure to loud report may effect hearing to dogs and surrounding persons.
- Expect heavy recoil from the use of the product, especially when using red power loads. Exercise extreme caution at all times.
- Never attempt to load your RRT Launcher with bullets or charges other than the recommended .22 Cal. Blanks.
- Always remove the training dummy from the barrel of the launcher before storage.
- Before EVERY launch, check to see that the barrel and the metal insert in the dummy are free of obstructions prior to loading the dummy or power charge.
- The RRT Launcher is **NOT A TOY! DO NOT ALLOW CHILDREN TO PLAY WITH OR OPERATE THE UNIT.**
- **THIS PRODUCT CAN BE HAZARDOUS!**
- **NEVER POINT OR FIRE The RRT Launcher AT A PERSON OR ANIMAL OR OBJECT!**

## WARRANTY

The RRT Launcher is guaranteed for 3 years from the date of purchase to be free of manufacturer defects. This guarantee is void if other than the recommended power charges are used or if the product is not used in conformance with these instructions. RRT dummies are guaranteed for a period of 1 year from the date of purchase to be free of manufacturer defects.

## HAVE QUESTIONS?

**If you do not understand the instructions or have further questions regarding the use and operation of the RRT Launcher please discontinue use and contact Specialty Products Company USA at (570) 729-7192 with your questions.**

## >> ACCESSORIES

### **SIDE-KICK SINGLE REMOTE LAUNCHER**

#### **CONVERT YOUR RRT LAUNCHER INTO A REMOTE LAUNCHER!**

Our highly portable & compact single remote launcher is perfect for everyday training. You can set multiple Side-Kicks in different locations using multiple receivers or can chain them together in a single location with a single receiver to achieve a multi-shot remote launcher. Use RRT's Release system or most 3rd party releases.



### **VERSA-LAUNCH REMOTE LAUNCHER SYSTEM**

#### **BUILD THE REMOTE LAUNCHER UNIT THAT FITS YOUR TRAINING NEEDS AND BUDGET!**

We have designed the most versatile remote launcher ever produced! Each individual launcher tube has a 360 degree rotation and has a 75 degree vertical adjustment!

The purchase of your RRT Hand Held Launcher already has you 1/4 of the way to owning your own single remote launcher. All you need is the Versa-Launch Remote Launcher Tube, Versa-Launch Remote Launcher Base and either RRT Release System or and 3rd party release system!

As your budget allows build on your base with additional launcher tubes to expand your remote launcher. Each base accommodates up to 8 launcher tubes.





## 1776 BLANKS

### LIMITATION OF LIABILITY

In no event shall TLB Industries, Inc. be liable for any direct, indirect, punitive, incidental, special or consequential damages arising out of the use or misuse of this product. By using this product, you assume all risks and liability in connection with it.

TLB Industries, Inc. shall not be liable for any damages arising out of or connected with the use or misuse of this product. The buyer assumes all risks and liability from the use or misuse of this product.

TLB Industries, Inc. reserves the right to change the terms, conditions under which this product is offered without further notice.

**TLB Industries, Inc.**

292 Dunn Road Honesdale, PA 18431

570-729-7192 [info@RRTLlauncher.com](mailto:info@RRTLlauncher.com)



RETRIEV R TRAINER  
RRTL LAUNCHER