



RRT
LAUNCHER

VERSA-LAUNCH
REMOTE LAUNCHER
OPERATING INSTRUCTIONS



FULLY READ THE WARNINGS BEFORE OPERATING!

Visit [Gun Dog Supply.com](http://GunDogSupply.com) | Order a Versa Launcher | See other RRT Products

PLEASE READ CAREFULLY BEFORE ATTEMPTING TO OPERATE
VERSA-LAUNCH REMOTE LAUNCHER INSTRUCTIONS

IMPORTANT!

TAKE SPECIAL HANDLING CARE AND SAFETY PRECAUTIONS!

Your Versa-Launch Remote Launcher is not a firearm, but the same handling, care and safety precautions must be exercised. Your Versa-Launch Remote Launcher is provided with certain built-in safety features, but are not substitutes for safe handling practices, which include the use of ear and eye protection as well as the use of heavy leather gloves.

DISCLAIMER

Any use or modification of the Versa-Launch Remote Launcher not in conformity with the manufacturer's instructions as described in this user's manual is **AT THE SOLE RISK AND RESPONSIBILITY** of the individual performing such unauthorized use and/or modification. Direct any inquires regarding use to Specialty Products Company prior to use or continued use of this product.

>> **WARNING**

- This product can be hazardous!
- With the dummy, you are firing what is equivalent to a six to eight ounce bullet. A heavy recoil and loud report should be expected.
- Expect a loud report when the launcher is fired. Prolonged exposure to loud report may effect hearing to dogs and surrounding persons.
- NEVER insert a live load into the chamber.
- NEVER use a load other than those specifically designed and recommended for use in the RRT Launcher
- NEVER aim or fire the Versa-Launch Remote Launcher Unit at anyone or anything.
- NEVER use a dummy other than a RRT dummy for the Versa-Launch Remote Launcher Unit.
- NEVER cock the bolt until you are ready to fire.
- NEVER use a dummy that has debris of any kind inside the tube, including but not limited to, mud, grass, water or rust.
- NEVER cock and fire the Versa-Launch Remote Launcher Unit without a cartridge in the chamber.
- NEVER fire the RRT Hand Held Launchers in the Versa-Launch Remote Unit if the exhaust hole in any of the shaft/barrels is/are obstructed in any way, also ensure the barrel is free of debris before every launch.

- NEVER operate the Versa-Launch Remote Launcher Unit without proper ear, eye and hand protection
- NEVER place a load in the chamber before placing a dummy on the shaft/barrel
- NEVER store a dummy on barrel of launcher when not in use
- NEVER allow the Versa-Launcher Remote Launcher Unit to be accessible to children
- NEVER LAUNCH THE VERSA-LAUNCH UNLESS COMPLETELY LEVEL
- NEVER USE ON UNEVEN GROUND
- DO NOT USE IN DRY CONDITIONS! Hot air or sparks could cause grass/tinder fire! Place launchers over a fire retardant mat (such as a rubber car mat) during every training session.
- NEVER DRY FIRE THE LAUNCHER(S). DOING SO MAY DAMAGE THE PRODUCT AND CAUSE CATASTROPHIC FAILURE WHEN FIRED IN THE FUTURE.
- NEVER FIRE/LAUNCH WITHOUT FULL CLEARANCE OF YOU THE OPERATOR, SURROUNDING PERSONS AND ANIMALS!
- NEVER POINT OR FIRE THE VERSA-LAUNCH REMOTE LAUNCHER SYSTEM AT ANY PERSON, ANIMAL OR OBJECT!

**FAILURE TO FOLLOW THESE WARNINGS MAY RESULT IN
SERIOUS INJURY OR DEATH**

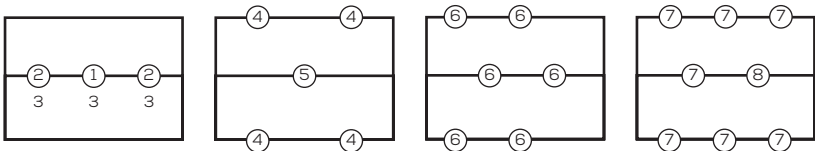
>> VERSA-LAUNCH REMOTE

The Versa-Launch Remote Launcher System is designed to be a modular unit. Any number of tubes may be installed on one base unit (from 1-8). Eight Launcher Tubes is the maximum number recommended.

If more than 8 Launcher Tubes are mounted to one Versa-Launch Remote Launcher Base Unit, the adjustability will be greatly reduced and the potential for a launched dummy contacting a mounted launcher will significantly increase which may cause injury or death.

The Versa-Launch Remote Launcher Tubes can be adjusted independently from 0 degrees to 75 degrees and can rotate 360 degrees.

>> VERSA-LAUNCH REMOTE LAUNCHER POSITIONING DIAGRAMS



>> INSTALLATION OF LAUNCHER TUBE INTO BASE

1) Remove the 2 slide nuts from thumb screws.



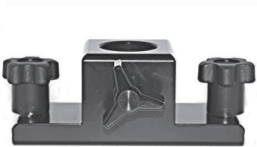
2) Press the 2 slide nuts into the suggested rail.



3) Using the allen wrench that is provided, turn the slide nuts so they are positioned flat in rail.



4) Install mounting block using the 2 thumb screws.



5) Slide the base of the launcher tube into the circular clamp. Drop the tube onto the post of the mounting plate. Once the tube is pushed completely down and securely in position slide the circular clamp down to the mounting plate.

NOTE: The launcher tube clamp must be tightened securely to prevent turning of the tube when launched

>> CONNECTION OF THE WIRE HARNESSSES

1) Plug the 5 pin connector of the tube connecting harness into the mating 5 pin connector on the back of the launcher tube.

2) Plug the 2 pin connector into the mating 2 pin plug of the next launcher. NOTE: The launchers will fire in the order that the wire harnesses are connected.

3) Repeat steps 1-2 until all of the launcher tubes are connected.

4) Connect the 2 pin receiver wire harness to the mating 2 pin connector of the first launcher. You will be requested to connect to other end of the receiver harness to the RRT Remote Launcher Electronic Release System Box or to any 3rd party manufacturers receiver later in the instructions. If another receiver harness is desired for a Left or Right Port you may contact RRT Launcher and purchase a 2nd harness for your receiver.

>> ADAPTING RRT HAND HELD LAUNCHER FOR THE VERSA-LAUNCH REMOTE LAUNCHER SYSTEM

The Versa-Launch Remote Launcher System was designed to work with any RRT Hand Held Launcher built from 1990 to present. The RRT Launchers manufactured during this time period have a rubber ribbed hand grip and a plastic or aluminum pull knob. **If you have recently purchased a new RRT Launcher (will have RRT LAUNCHER on the grip in raised lettering) you can skip step one below.**

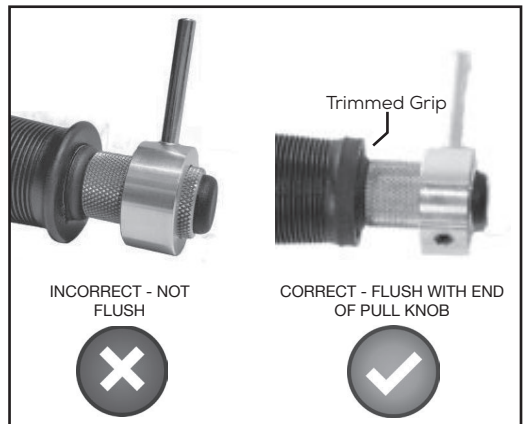
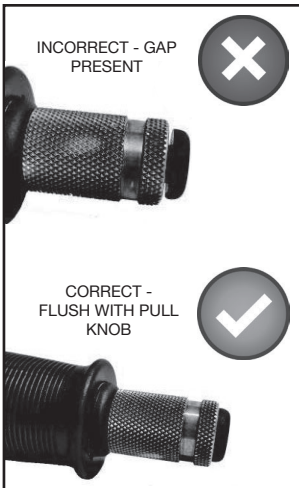
If you are unsure if your RRT Launcher is compatible contact Specialty Products Company before attempting to use with your Versa-Launch Remote Launcher System. If your RRT Launcher is different from the ones in the images to the right, please contact us for possible retrofit options.



DO NOT ATTEMPT TO USE OTHER MANUFACTURES HAND HELD LAUNCHERS

- 1) The rubber grip will require trimming in order to fit into the Versa-Launch Launcher Tube. On the base of the grip (end closest to the pull knob) the lip of the grip must be trimmed. Please refer to image below. This can be achieved by using a sharp utility knife and turning the grip or turning the grip on a sander.
- 2) Install the black cap plug into the bottom of the pull knob on the RRT Launcher. Lightly tapping with a hammer will help to set the cap plug. **The black plug must be installed completely into the pull knob with no gap present.**
- 3) Install the aluminum pull ring onto the pull knob. Position the pull ring so it is flush with the end of the pull knob and tighten the set screw securely with the allen wrench. Failure to properly tighten the set screw may allow it to loosen with use and will cause failure to launch the dummy.
- 4) Repeat steps 1-3 for all RRT Hand Held Launchers you wish to use with your Versa-Launch Remote Launcher System.

-A light coating of lubricant will help the launcher slide into the launcher tube. The lubricant must be cleaned off if the launcher is removed and fired by hand.



>> PREPARATION FOR FIRING

- 1) Place your Versa-Launch Remote Launcher System where you will be training with it. **ENSURE THAT IT IS FULLY LEVEL AND NEVER USED ON UNEVEN GROUND!**
- 2) Slide your RRT Hand Held Launcher (with pull ring and cap plug properly installed) into the Versa-Launch Launcher Tube. Position the launcher so the pull ring shaft exits the long slot in the remote launcher tube. Repeat this process until all launcher tubes are complete and ready.
- 3) Install any RRT Dummy onto each launcher.
- 4) Open the breech of the Launcher(s) by depressing the thumb latch. Install a green, yellow or red power level Blank Cartridge.
IMPORTANT: Press on the blank to fully seat it in the chamber.

!!! WARNING !!!

BEFORE PERFORMING THE NEXT STEPS USE EXTREME CAUTION!!

BE SURE YOUR FULL BODY, SURROUNDING PERSONS AND ANIMALS ARE IN A POSITION THAT IS OPPOSITE FROM THE DIRECTION OF ANY OR ALL OF THE LAUNCHERS WHERE THE DUMMIES ARE POINTING AND THE REMOTE RECIEVER IS TURNED OFF AS WELL AS UNPLUGGED FROM THE TUBE CONNECTING HARNESS!

- 5) Close the breech of the RRT Hand Held Launcher. **NOTE: The thumb latch must be held in the open position when the head is closed. Once the head is closed to the breech release the thumb latch and push the latch to ensure it has fully seated thus locking the head closed. Failure to complete STEP 4 AND STEP 5 may cause the thumb latch to break rendering the launcher unusable until the thumb latch is replaced. You may contact RRT to purchase additional thumb latches if you fail to follow the instructions and damage/break your thumb latch.**

- 6) Turn the servo fully counter clockwise so the servo arm is touching the cocking pin (pictured to the right) **FAILURE TO SET THE ARM AGAINST THE COCKING PIN MAY CAUSE MORE THAN ONE LAUNCHER TO FIRE AT ONE TIME.**



- 7) Locate the remote to the receiver that you are using and ensure that it is clear of any pressure on it. Do not keep in your pocket or leave it placed on the ground where it could be walked on. **ACCIDENTAL DEPRESSION OF THE BUTTON WILL CAUSE THE VERSA-LAUNCH REMOTE UNIT TO FIRE AND COULD CAUSE INJURY OR DEATH.**
- 8) Slide the pin/pull ring back and seat the pin into the notch ensuring that it is as far left as it can be positioned. **ACCIDENTAL RELEASE OF THE PIN WILL CAUSE THE FIRING PIN TO MAKE CONTACT WITH THE POWER CHARGE AND THE LAUNCH OF THE DUMMY WILL OCCUR! ALWAYS KEEP YOURSELF, SURROUNDING PERSONS AND ANIMALS FULLY CLEAR OF THE UNIT, LAUNCHERS, LAUNCHER DIRECTION AND DUMMIES!** Also check to ensure you do not have any launch interference with the launchers and/or dummies of your Versa-Launch. Every path of launch is clear of any obstruction.

>> MAINTENANCE

User must thoroughly clean the barrel, chamber and hinge areas with a good gun cleaning solvent after each use of each RRT Launcher used in the Versa-Launch Remote Launcher Unit. Before each use examine your Versa-Launch Remote Launcher Unit and RRT Launchers to ensure there is no debris and no damage to the equipment. Improper maintenance and failure to properly clean the RRT Launchers and Versa-Launcher Remote Launch Unit may result in serious injury or death.



User is responsible to evaluate the entire unit before every launch to ensure all fittings are secure and full functioning.

You may purchase the Retrieval-R-Trainer Cleaning Kit at any of our retailers listed on our website at www.rttllauncher.com.

A small amount of gun oil applied to the hinge area after cleaning will help to ensure smooth operation. Cleaning of the chamber can be enhanced by using a .22 caliber wire brush.

Also thoroughly clean and dry the inside of the aluminum dummy tube after each launch. Be certain that prior to each time you launch the dummy from your Versa-Launch Remote Launcher System that it is free of debris both internally and externally. **Failure to properly maintain the aluminum insert tube in your dummy may result in serious injury or death.**

A rubber "O" Ring in a groove near the outer end of the barrel provides a seal for the release gases from the power charge. This "O" Ring will wear, causing some of the gases to escape, therefore reducing the flight distance of the dummy. Apply a thin coat of silicone, or any other lubricant safe for use on rubber components, to prevent drying and cracking of the "O" Ring. Replacement "O" Rings are available from our retailers on our website.

BLANK POWER CHARGES

Power charge based on the distance you wish to throw the dummy.

Distances are approximate.

Light Green Load - 75' - 100'
Medium Yellow Load - 100' - 150'
Heavy Red Load - 150' - 200'

WARRANTY

The Versa-Launch Tubes and Base are covered with a 1 year warranty from date of purchase for manufacturer defects. This guarantee is void if blanks are used that are not recommended, the product is not used in conformance with these instructions or if the product is modified.

HAVE QUESTIONS?

If you do not understand the instructions or have further questions regarding the use and operation of the Versa-Launch Remote Launcher please discontinue use and contact Specialty Products Company USA at (570) 729-7192 with your questions.

LIMITATION OF LIABILITY

In no event shall TLB Industries, Inc. be liable for any direct, indirect, punitive, incidental, special or consequential damages arising out of the use or misuse of this product. By Using this product, you assume all risks and liability in connection with it.

TLB Industries, Inc. shall not be liable for any damages arising out of or connected with the use or misuse of this product. The buyer assumes all risks and liability from the use or missuse of this product.

TLB Industries, Inc. reserves the right to change the terms, conditions under which this product is offered without further notice.

Visit our website for more great products and accessories for your Versa-Launch Remote Launcher at

www.RRTLlauncher.com



TLB Industries, Inc.

292 Dunn Road, Honesdale, PA 18431 USA

570-729-7192 | 570-729-7193 (Fax)

info@rrtlauncher.com