



**SPORT
HUNTER®**

∴
825

VISIT GUN DOG SUPPLY.COM
ORDER SPORTDOG SD-825
SEE OTHER SPORTDOG PRODUCTS

OPERATING GUIDE
PLEASE READ THIS ENTIRE GUIDE BEFORE BEGINNING

IMPORTANT SAFETY INFORMATION

Explanation of Attention Words and Symbols used in this guide



This is the safety alert symbol. It is used to alert you to potential personal injury hazards. Obey all safety messages that follow this symbol to avoid possible injury or death.

⚠ WARNING

WARNING indicates a hazardous situation which, if not avoided, could result in death or serious injury.

CAUTION

CAUTION, used without the safety alert symbol, indicates a hazardous situation which, if not avoided, could result in harm to your dog.

⚠ WARNING

- Not for use with aggressive dogs. Do not use this product if your dog is aggressive, or if your dog is prone to aggressive behavior. Aggressive dogs can cause severe injury and even death to their owner and others. If you are unsure whether this product is appropriate for your dog, please consult your veterinarian or a certified trainer.
- This device contains Lithium-Ion (Li-Ion) batteries; never incinerate, puncture, deform, short-circuit, or charge with an inappropriate charger. Fire, explosion, property damage, or bodily harm may occur if this warning is not followed.
- Risk of explosion if battery is replaced by an incorrect type. Dispose of used batteries according to the instructions.
- Batteries should never be removed from the battery compartment for charging.
- Risk of explosion if batteries are charged in areas with high temperature (100° F+).

CAUTION

Please read and follow the instructions in this manual. Proper fit of the collar is important. A collar worn for too long, or made too tight on the dog's neck may cause skin damage. This is called bed sores; it is also called decubitus ulcers or pressure necrosis.

- Avoid leaving the collar on the dog for more than 12 hours per day.
- When possible, reposition the collar on the dog's neck every 1 to 2 hours.
- Check the fit to prevent excessive pressure; follow the instructions in this manual.
- Never connect a lead/leash to the electronic collar; it will cause excessive pressure on the contacts.
- When using a separate collar for a lead/leash, don't put pressure on the electronic collar.
- Wash the dog's neck area and the contacts of the collar weekly with a damp cloth.
- Examine the contact area daily for signs of a rash or a sore.
- If a rash or sore is found, discontinue use of the collar until the skin has healed.
- If the condition persists beyond 48 hours, see your veterinarian.

For additional information on bed sores and pressure necrosis, please visit the Support section for remote trainers at www.sportdog.com.

These steps will help keep your dog safe and comfortable. Millions of dogs are comfortable while they wear stainless steel contacts. Some dogs are sensitive to contact pressure. You may find after some time that your dog is very tolerant of the collar. If so, you may relax some of these precautions. It is important to continue daily checks of the contact area. If redness or sores are found, discontinue use until the skin has fully healed.

- You may need to trim the hair in the area of the Contact Points or switch to the longer Contact Points to ensure consistent contact. Never shave the dog's neck; this may lead to a rash or infection.
- You should not make the collar any tighter than is required for good contact. A collar that is too tight will increase the risk of pressure necrosis in the contact area.
- Unauthorized changes or modifications to the equipment may violate FCC regulations and could void the user's authority to operate the equipment.

Thank you for choosing SportDOG Brand® training products. Used properly, this product will help you train your dog efficiently and safely. To ensure your satisfaction, please review this owner's manual thoroughly. If you have questions regarding this product's operation, please see this manual's Frequently Asked Questions or Troubleshooting sections, contact our Customer Care Center at 1-800-732-0144, visit our website at www.sportdog.com, or view our support videos at www.youtube.com/sportdogbrand.

To get the most protection out of your warranty, please register your product within 30 days at www.sportdog.com. By registering, and keeping your receipt you will enjoy the product's full warranty and should you ever need to call the Customer Care Center, we will be able to help you faster. Most importantly, your valuable information will never be given or sold to anyone. Complete warranty information is available online at www.sportdog.com.

TABLE OF CONTENTS

COMPONENTS	5
HOW THE SYSTEM WORKS	5
KEY DEFINITIONS	6
PREPARE THE REMOTE TRANSMITTER*	7
PREPARE THE COLLAR RECEIVER*	8
FIT THE COLLAR RECEIVER*	10
FIND THE BEST INTENSITY LEVEL FOR YOUR DOG	11
CHANGING STIMULATION RANGES*	12
GENERAL TRAINING TIPS	12
PROGRAM THE REMOTE TRANSMITTER*	13
MATCH THE COLLAR RECEIVER AND REMOTE TRANSMITTER*	14
PROGRAM THE SYSTEM FOR TWO OR THREE-DOG OPERATION*	14
CHANGE ID CODES*	14
ACCESSORIES	15
FREQUENTLY ASKED QUESTIONS	16
TROUBLESHOOTING	17
TEST LIGHT INSTRUCTIONS*	18
TERMS OF USE AND LIMITATION OF LIABILITY	18
FCC COMPLIANCE	19
BATTERY DISPOSAL	20
SPORTDOG™ ADD-A-DOG® RECEIVERS	24

* You  videos available at www.youtube.com/sportdogbrand

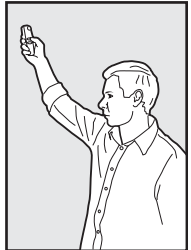
COMPONENTS



HOW THE SYSTEM WORKS

The SportDOG™ SportHunter® 825 has been proven safe, comfortable, and effective for all dogs over 8 pounds. Consistent, correct use of this product allows you to reinforce commands and correct misbehavior from up to 1/2 mile. The Remote Transmitter sends a signal, activating the Collar Receiver to deliver a harmless stimulation. With proper training, a dog will learn to associate this signal with a command. Like all SportDOG products, this model features adjustable stimulation levels so you can tailor the stimulation level to your dog's temperament, eliminating the risk of over-correction.

IMPORTANT: THE SPORHUNTER 825 HAS A RANGE OF UP TO 1/2 MILE. DEPENDING ON THE WAY YOU HOLD THE REMOTE TRANSMITTER, THE MAXIMUM RANGE MAY VARY. FOR CONSISTENT RESULTS AT LONGER RANGES, HOLD THE REMOTE TRANSMITTER IN A VERTICAL POSITION AWAY FROM YOUR BODY AND ABOVE YOUR HEAD. TERRAIN, WEATHER, VEGETATION, TRANSMISSION FROM OTHER RADIO DEVICES, AND OTHER FACTORS WILL AFFECT THE MAXIMUM RANGE.



⚠ WARNING Do not use this product if your dog is aggressive, or if your dog is prone to aggressive behavior. Aggressive dogs can cause severe injury and even death to their owner and others. If you are unsure whether this product is appropriate for your dog, please consult your veterinarian or a certified trainer.

KEY DEFINITIONS

REMOTE TRANSMITTER



REMOTE TRANSMITTER: Transmits the radio signal to the Collar Receiver. It is waterproof and can be submerged in water to a depth of 25 feet.

INTENSITY DIAL: Provides multiple levels of stimulation so you can match the correction to your dog's temperament.

TRANSMITTER INDICATOR LIGHT: Indicates that a button is pressed and also serves as a low-battery indicator.

UPPER BUTTON: This button is factory-set to deliver continuous stimulation.

LOWER BUTTON: This button is factory-set to deliver momentary stimulation, or a "Nick."

SIDE BUTTON: This button is factory-set to deliver a tone stimulation.

CHARGING JACK: For connecting the charger. Although the Remote Transmitter is waterproof without it, keep the cover in place when not charging to keep debris out of the opening.

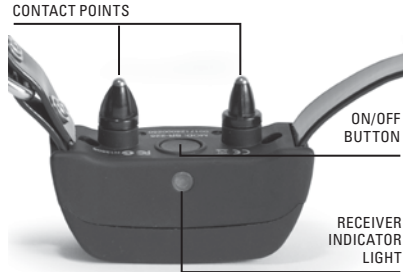
MODE BUTTON: This button gives you the ability to change the mode of your Remote Transmitter (see page 13).

COLLAR RECEIVER: Receives the radio signal from the Remote Transmitter and delivers the static, vibration, or tone stimulation for correcting or cueing your dog. It is waterproof and can be submerged in water to a depth of 25 feet.

RECEIVER INDICATOR LIGHT: Indicates when the Collar Receiver has been turned on or off, serves as a low-battery indicator, and also indicates when a continuous or momentary (nick) stimulation button is pressed.

CONTACT POINTS: The contacts through which the Collar Receiver delivers stimulation.

ON/OFF BUTTON: Momentarily pressing and releasing this button turns the Collar Receiver on and off.



THE COLLAR RECEIVER IS CAPABLE OF DELIVERING FOUR TYPES OF STIMULATION:

CONTINUOUS: You control both when and how long stimulation is delivered, up to a maximum of 10 seconds. After 10 seconds, the static stimulation will "time out" for 5 seconds. During this "time out," the Collar Receiver will not respond to the Remote Transmitter. The Transmitter button will need to be released and then pressed again before additional stimulation can be delivered.

MOMENTARY (NICK): Static stimulation is delivered for 1/10 of a second, regardless of how long the button is pressed.

tone: The Collar Receiver will make a rapid beeping noise when a Tone button is pressed.

VIBRATION: The Collar Receiver will vibrate when a Vibration button is pressed, up to a maximum of 10 seconds. After 10 seconds, the vibration stimulation will "time out" for 5 seconds. During this "time out," the Collar Receiver will not respond to the Remote Transmitter. The Transmitter button will need to be released and then pressed again before additional stimulation can be delivered.

STEP :: 01

PREPARE THE REMOTE TRANSMITTER

CHARGE THE REMOTE TRANSMITTER

1. Lift the rubber cover protecting the Charging Jack.
2. Connect one of the charger connectors to the Charging Jack.
3. Plug the charger into a standard 120/240-volt AC wall outlet.
4. Charge the Remote Transmitter for 2 hours for the first charge and every charge thereafter.

Using Li-Ion technology, the Remote Transmitter only requires a 2 hour charge. It is not harmful to let the unit charge for more than 2 hours.

5. When charging is complete, replace the rubber cover.



NOTE: Approximate battery life between charges is 50 to 70 hours, depending on frequency of use.

TRANSMITTER INDICATOR LIGHT

OPERATIONAL MODE	LIGHT COLOR	BATTERY STATUS	LIGHT FUNCTION
Continuous static stimulation, tone, or vibrate button pressed	Green	Good	Light is solid in color while button is pressed
Continuous static stimulation, tone, or vibrate button pressed	Red	Low	Light is solid in color while button is pressed
Momentary static stimulation button pressed	Green	Good	Light flashes once and turns off
Momentary static stimulation button pressed	Red	Low	Light flashes once and turns off
Unit is charging	Green	Low	Light is solid in color while charging
Unit is fully charged (charger still connected)	Green	Good	Light flashes once per second once the battery is completely charged

STEP :: 02

PREPARE THE COLLAR RECEIVER

CHARGE THE COLLAR RECEIVER

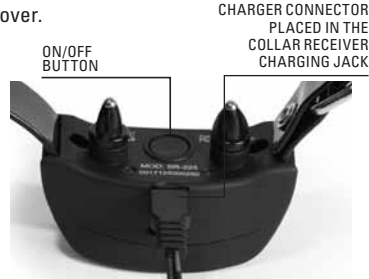
1. Lift the rubber cover protecting the Charging Jack.
2. Connect one of the charger connectors to the Charging Jack.
3. Plug the charger into a standard 120/240-volt AC wall outlet.
4. Charge the Collar Receiver for 2 hours for the first charge and every charge thereafter.

Using Li-Ion technology, the Collar Receiver only requires a 2 hour charge. It is not harmful to let the unit charge for more than 2 hours.

5. When charging is complete, replace the rubber cover.

TO TURN THE COLLAR RECEIVER ON

Press and release the On/Off Button. The Collar Receiver Indicator Light will come on and the Collar Receiver will beep 1 - 2 times depending on what stimulation range is chosen. The default is 2 (medium).



TO TURN THE COLLAR RECEIVER OFF

Press and release the On/Off Button. The Receiver Indicator Light comes on solid (red) and the Collar Receiver beeps continuously for 2 seconds.

To extend the life between charging cycles, turn the Collar Receiver off when it is not in use.

NOTE: Approximate battery life between charges is 50 to 70 hours, depending on frequency of use.

RECEIVER INDICATOR LIGHT

OPERATIONAL MODE	LIGHT COLOR	BATTERY STATUS	LIGHT FUNCTION	SPEAKER FUNCTION	VIBRATION
Unit is turned on via On/Off Button	Green	Good	Light is solid in color during beep sequence	Beeps 1-2 times depending on stimulation range setting (2 is the default setting). Please see page 12.	N/A
Unit is turned on via On/Off Button	Red	Low	Light is solid in color during beep sequence		
Unit is turned off via On/Off Button	Red	N/A	Light is solid in color during beep sequence	Beeps continuously for 2 seconds	N/A
Unit is on	Green	Good	Light flashes every 2 seconds	N/A	N/A

RECEIVER INDICATOR LIGHT (CONTINUED)

OPERATIONAL MODE	LIGHT COLOR	BATTERY STATUS	LIGHT FUNCTION	SPEAKER FUNCTION	VIBRATION
Unit is on	Red	Low	Light flashes every 2 seconds	N/A	N/A
Unit is delivering continuous static stimulation	Red	N/A	Light is solid in color for as long as button is pressed (up to 10 seconds)	N/A	N/A
Unit is delivering momentary static stimulation	Red	N/A	Light will quickly flash once no matter how long button is pressed	N/A	N/A
Unit is delivering tone stimulation	Off	N/A	N/A	Unit will beep for as long as button is pressed	N/A
Unit is delivering vibration stimulation	Off	N/A	N/A	N/A	Unit will vibrate for as long as button is pressed (up to 10 seconds)
Unit is charging	Green	Low	Light is solid in color while charging	N/A	N/A
Unit is fully charged (charger still connected)	Green	Good	Light flashes once per second once the battery is completely charged	N/A	N/A

RECHARGEABLE BATTERIES

⚠ WARNING

- This device contains Lithium-Ion (Li-Ion) batteries; never incinerate, puncture, deform, short-circuit, or charge with an inappropriate charger. Fire, explosion, property damage, or bodily harm may occur if this warning is not followed.
- Risk of explosion if battery is replaced by an incorrect type. Dispose of used batteries according to the instructions (see page 20).
- Batteries should never be removed from the battery compartment for charging.
- Risk of explosion if batteries are charged in areas with high temperature (100° F+).

- The rechargeable Lithium Ion (Li-Ion) batteries are not memory sensitive, do not require depletion before charging, and cannot be over charged.
- The batteries come partially charged from the factory, but will require a full charge before the first use.
- **When storing the unit for long periods, remember to regularly give batteries a full charge. This should be done once every 3 to 4 months.**
- You should expect hundreds of recharge cycles from your batteries. However, all rechargeable batteries lose capacity over time relative to the number of recharge cycles they experience. This is normal. If your operating time drops to half of the original life, contact the Customer Care Center to purchase a new battery.
- The batteries should last for a period of 3-5 years. When a battery needs replacement, you can order a new pack by calling our Customer Care Center at 1-800-732-0144. Please do not open the Collar Receiver or Remote Transmitter until you have received the replacement.

FIT THE COLLAR RECEIVER

IMPORTANT: The proper fit and placement of the Collar Receiver is important for effective training. The Contact Points must have direct contact with your dog's skin.

CAUTION

Please read and follow the instructions in this manual. Proper fit of the collar is important. A collar worn for too long, or made too tight on the dog's neck may cause skin damage. This is called bed sores; it is also called decubitus ulcers or pressure necrosis.

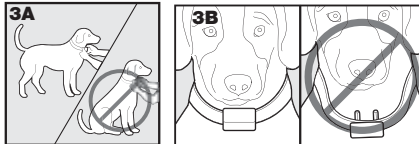
- Avoid leaving the collar on the dog for more than 12 hours per day.
- When possible reposition the collar on the dog's neck every 1 to 2 hours.
- Check the fit to prevent excessive pressure; follow the instructions in this manual.
- Never connect a lead/leash to the electronic collar; it will cause excessive pressure on the contacts.
- When using a separate collar for a lead/leash, don't put pressure on the electronic collar.
- Wash the dog's neck area and the contacts of the collar weekly with a damp cloth.
- Examine the contact area daily for signs of a rash or a sore.
- If a rash or sore is found, discontinue use of the collar until the skin has healed.
- If the condition persists beyond 48 hours, see your veterinarian.

For additional information on bed sores and pressure necrosis, please visit the Support section for remote trainers at www.sportdog.com.

These steps will help keep your dog safe and comfortable. Millions of dogs are comfortable while they wear stainless steel contacts. Some dogs are sensitive to contact pressure. You may find after some time that your dog is very tolerant of the collar. If so, you may relax some of these precautions. It is important to continue daily checks of the contact area. If redness or sores are found, discontinue use until the skin has fully healed.

To ensure a proper fit, follow these steps:

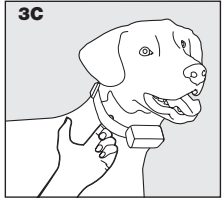
1. With your dog standing (3A), center the Collar Receiver so the Contact Points are underneath your dog's neck, touching the skin (3B). If your dog has a long or thick coat, you have two options to ensure consistent contact: either trim the hair around the Contact Points or switch to the longer Contact Points included with your system.



CAUTION

- You may need to trim the hair in the area of the Contact Points. Never shave the dog's neck; this may lead to a rash or infection.
- You should not make the collar any tighter than is required for good contact. A collar that is too tight will increase the risk of pressure necrosis in the contact area.

2. The Collar Receiver should fit snugly, yet loose enough to allow one finger to fit between the strap and your dog's neck (3C).
3. Allow your dog to wear the collar for several minutes, and then recheck the fit. Check the fit again as your dog becomes more comfortable wearing the Collar Receiver.



FIND THE BEST INTENSITY LEVEL FOR YOUR DOG

The SportHunter® 825 has multiple intensity levels. This allows you to choose the stimulation that is best for your dog.

NOTE: Always start at the lowest level and work your way up.

For training efficiency, it is important to find the right intensity level for your dog. This is called the Recognition Level, at which your dog looks around in curiosity or flicks his ears.

FINDING YOUR DOG'S RECOGNITION LEVEL:

NOTE: Every dog is different and you cannot predict where your dog's Recognition Level will be. Watch closely for any slight change in behavior that demonstrates your dog is feeling the stimulation.

1. With the Collar Receiver turned on and properly fitted to your dog, set the Remote Transmitter's Intensity Dial at Level 1 and press the Continuous static stimulation button for 1 to 2 seconds.
2. If your dog shows no reaction to Level 1, go to Level 2 and repeat the process.
3. **YOUR DOG SHOULD NOT VOCALIZE OR PANIC WHEN RECEIVING STIMULATION. IF THIS HAPPENS, THE STIMULATION LEVEL IS TOO HIGH AND YOU NEED TO GO BACK TO THE PREVIOUS LEVEL AND REPEAT THE PROCESS.**
4. Once you find your dog's Recognition Level, this is the level you should use when you begin a training exercise.
5. If you have progressed to Level 7 while searching for your dog's Recognition Level and your dog continues to show no response, check to see if the Collar Receiver is snug against your dog's neck. Then go back to Intensity Level 1 and repeat the process. If your dog still does not indicate he is feeling the static stimulation, you have three options: trim the hair beneath the Contact Points, switch to the longer Contact Points included in your system, or change the stimulation range.

If after completing all of these steps your dog still does not indicate he is feeling the static stimulation, please contact the Customer Care Center at 1-800-732-0144.

CHANGING STIMULATION RANGES

The SportHunter® 825 Collar Receiver comes with 2 stimulation ranges (low and medium). There are 7 stimulation levels within each range, with 1 being the lowest and 7 being the highest. The default range setting is 2 (medium).

To change the range of stimulation, follow these steps:

1. Make sure the Collar Receiver is off.
2. Then turn the unit on by pressing and releasing the On/Off Button.
3. After the Indicator Light turns off and within 5 seconds, press and hold the On/Off Button for 3 seconds.
4. The Collar Receiver will then beep once and the Indicator Light will flash orange. This indicates **Low** stimulation range. If **Medium** is desired, continue to hold the On/Off Button until the number of beeps/orange flashes equals 2 as shown in the chart below.
5. Release the On/Off Button once the desired range is selected; the Collar Receiver will turn off.
6. Turn the unit back on. It will then beep according to the stimulation range selected in Step 4.

	STIMULATION RANGE	DOG TEMPERAMENT
1 beep	Low	Mild
2 beeps	Medium	Moderate

GENERAL TRAINING TIPS

BEFORE TRAINING YOUR DOG WITH THIS PRODUCT:

You will have the most success using this remote trainer if you always remember to teach a command before trying to reinforce the command with a remote trainer. We recommend that you read the enclosed Training Guide and watch the enclosed DVD before training with this remote trainer. Your training will be easier and proceed faster if you follow the guidelines in these teaching assistants. In addition, always keep the following training tips in mind:

- Eliminate one misbehavior or teach one obedience command at a time. If you move too fast with the training, your dog may become confused.
- Be consistent. Give your dog a static, tone or vibration stimulation with each misbehavior.
- Do not overcorrect your dog. Use as few stimulations as possible to train your dog.
- Restrict your dog from situations in which he has a history of misbehaving unless you can supervise him and use the SportHunter 825 for applying static, tone or vibration stimulation.
- If you notice one situation in which your dog misbehaves repeatedly, set up this situation as a training session. This will dramatically increase your chances of success.
- If your dog has a timid reaction to the static, tone or vibration stimulation (especially the first couple of times), do not be alarmed. Redirect his attention to a simple and appropriate behavior (i.e. a known command, such as "Sit").
- Never use the SportHunter 825 to correct or eliminate any form of aggressive behavior. If your dog exhibits such behavior, contact a professional trainer. Aggression in dogs is the result of many factors – it may be a learned behavior or it may be brought on as a result of fear. Another factor contributing to aggression in dogs is social dominance. Every dog is different.

At this point, your remote trainer is ready to use. The transmitter is factory set to mode 1, but you may wish to change the mode to fit your situation. See STEP 5, for an explanation of mode options.

STEP :: 05

PROGRAM THE REMOTE TRANSMITTER

The SportHunter® 825 Remote Transmitter has seven operational modes to allow you to select the best match for your type or style of training. The Remote Transmitter is factory set to mode 1. There is also one programming mode: Mode V/T (Change ID Codes) on page 14.

TO CHANGE THE MODE:

1. Referring to the following table, adjust the Intensity Dial to your desired mode.
2. Turn the Remote Transmitter over and remove the belt clip if attached.
3. Using a pen or the tine on the buckle of your collar strap, press and release the Mode Button. When the Mode Button is pressed, the Transmitter Indicator Light will be solid in color. When it is released, it will flash the number of times for the mode selected.



For example, if mode 2 is desired, adjust the Intensity Dial to Level 2. Once the Mode Button has been depressed, the Transmitter Indicator Light will be solid and, once the mode button is released, the Transmitter Indicator Light will flash 2 times.

MODE	UPPER BUTTON FUNCTION	LOWER BUTTON FUNCTION	SIDE BUTTON FUNCTION	NUMBER OF DOGS
1*	Continuous stimulation (Level set by intensity dial) OR Vibe if V/T on Dial	Momentary stimulation (Level set by intensity dial) OR Vibe if V/T on Dial	Tone only	1
2	Continuous stimulation (Level set by intensity dial) OR Tone if V/T on Dial	Momentary stimulation (Level set by intensity dial) OR Tone if V/T on Dial	Vibe only	1
3	Dog 1: Continuous stimulation (Level set by intensity dial) OR Tone if V/T on Dial	Dog 2: Continuous stimulation (Level set by intensity dial) OR Tone if V/T on Dial	Dog 3: Continuous stimulation (Level set by intensity dial) OR Tone if V/T on Dial	3
4	Dog 1: Continuous stimulation (Level set by intensity dial) OR Vibe if V/T on Dial	Dog 2: Continuous stimulation (Level set by intensity dial) OR Vibe if V/T on Dial	Dog 3: Continuous stimulation (Level set by intensity dial) OR Vibe if V/T on Dial	3
5	Continuous stimulation (Level set by intensity dial) OR Tone if V/T on Dial	Momentary stimulation (Level set by intensity dial) OR Tone if V/T on Dial	N/A	1
6	Continuous stimulation (Level set by intensity dial) OR Vibe if V/T on Dial	Momentary stimulation (Level set by intensity dial) OR Vibe if V/T on Dial	N/A	1
7	Continuous stimulation (Level set by intensity dial) OR Tone if V/T on Dial	Momentary stimulation (Level set by intensity dial) OR Tone if V/T on Dial	Locate Remote Beeper**	1
V/T (ID CODE)	N/A	N/A	(See STEP 8)	N/A

* Factory Default Mode

** Locate Remote Beeper: The Side Button turns run mode off and locates the Remote Beeper. To enable run mode again, press and hold the Side Button for 3 seconds.

STEP :: 06

MATCH THE COLLAR RECEIVER AND REMOTE TRANSMITTER

To match the Collar Receiver to work with a new Remote Transmitter or to match a new Collar Receiver to work with your existing Remote Transmitter:

- A. Turn the Collar Receiver off.
- B. Press and hold the On/Off Button. The Receiver Indicator Light will come on, then turn off after 4-5 seconds. If the On/Off Button is released too early, the Receiver Indicator Light will begin flashing as normal. If this occurs, start over from **A**.
- C. After the Receiver Indicator Light has turned off, release the On/Off Button.
- D. Press and hold the Upper Button on the Remote Transmitter until the Receiver Indicator Light flashes 5 times. Once the Receiver Indicator Light has flashed 5 times, the Collar Receiver has been matched and will begin flashing as normal. If the Receiver Indicator Light does not flash 5 times, start over from **A**.

STEP :: 07

PROGRAM THE SYSTEM FOR TWO OR THREE-DOG OPERATION

SportDOG™ Add-A-Dog® Collar Receiver(s) must be purchased to train additional dogs.
Please refer to the back cover for compatible Add-A-Dog Collar Receivers for this system.

1. Program the Remote Transmitter to mode 3 or 4 (see page 13).
2. Program the first Collar Receiver.
 - A. Turn the Collar Receiver off.
 - B. Press and hold the On/Off Button. The Receiver Indicator Light will come on, then turn off after 4-5 seconds. If the On/Off Button is released too early, the Receiver Indicator Light will begin its normal flashing. If this occurs, start over from **A**.
 - C. After the Receiver Indicator Light has turned off, release the On/Off Button.
 - D. Press and hold the **Upper Button** on the Remote Transmitter until the Receiver Indicator Light flashes 5 times. If the Receiver Indicator Light does not flash 5 times, start over from **A**.
3. Program the second Collar Receiver using **A** through **D** above, but using the **Lower Button** in place of the Upper Button.
4. Program the third Collar Receiver using **A** through **D** above, but using the **Side Button** in place of the Upper Button.

STEP :: 08

CHANGE ID CODES

An ID Code is the signal identification between the Remote Transmitter and Collar Receiver. Each is programmed in 1 of 2,000 ID Codes from the factory. The SportHunter® 825 has the flexibility to program two or more Remote Transmitters to the same ID Code, allowing them to control one Collar Receiver. There are 64 programmable ID Codes available.

TO MANUALLY PROGRAM A REMOTE TRANSMITTER'S ID CODE FOLLOW THESE STEPS:

1. Turn the Intensity Dial to V/T, and then press and release the Mode Button on the back of your Remote Transmitter. This does not change the mode, so the current mode will still be active after the ID change is complete.
2. Once the Mode Button is released, the Transmitter Indicator Light will illuminate solid green and stay on for 15 seconds.
3. While the green Indicator Light is on, turn the Intensity Dial to select the 1st digit of the ID and then press and release the Side Button. The green Indicator Light will flash rapidly confirming selection.

4. Again, while the green Indicator Light is on, turn the Intensity Dial to select the 2nd digit of the ID and then press and release the Side Button. The green Indicator Light will flash rapidly confirming selection. The 2nd digit is optional and, if not desired, wait until the green light turns off and refrain from pressing the Side Button.
5. At the end of 15 seconds, or after the second press of the Side Button, the green Indicator Light will turn off and the ID of the unit will be updated. At this point, the unit will be in the same mode it was in prior to setting the ID.
6. Upon changing the ID Code, you will need to match the Collar Receiver to the Remote Transmitter (see STEP 6 on page 14).

TO RETURN THE UNIT TO THE FACTORY ID FOLLOW THESE STEPS:

1. Turn the Intensity Dial to V/T, and then press and release the Mode Button on the back of your Remote Transmitter. This does not change the mode, so the current mode will still be active after the ID change is complete.
2. Do not press any buttons and wait until the green Transmitter Indicator Light turns off.
3. You will need to match the Collar Receiver to the Remote Transmitter (see STEP 6 on page 14).

ACCESSORIES

To purchase additional accessories for your SportDOG Brand® SportHunter® 825, contact the Customer Care Center at 1-800-732-0144 or visit our website at www.sportdog.com to locate a retailer near you.

Component	Part Number
¾" Black Collar Strap	SAC00-10816
¾" Blaze Orange Collar Strap	SAC00-10815
¾" Blue Collar Strap	SAC00-11921
¾" Green Collar Strap	SAC00-10817
¾" Red Collar Strap	SAC00-11820
¾" White Collar Strap	SAC00-12796
¾" Yellow Collar Strap	SAC00-12795
Collar Receiver (does not include collar strap)	SDT00-13858
Remote Transmitter Only	SDT00-13922
Remote Transmitter with Lanyard, Antenna and Belt Clip	SDT54-13923
Antenna	SAC00-12543
Contact Points (Short)	SAC00-12571
Contact Points (Long)	SAC00-12570
Battery Kit (Collar Receiver)	SAC54-13735
Battery Kit (Remote Transmitter)	SAC54-13924
Wall Charger	SAC00-13736
Accessory Pack (includes screws and Charging Jack covers)	SAC00-14008

FREQUENTLY ASKED QUESTIONS

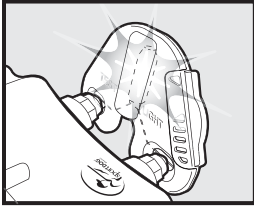
Is the static stimulation safe for my dog?	While Continuous and/or Momentary static stimulation may be unpleasant, it is harmless to your dog. Electronic training devices require interaction and training from the owner to achieve desired results.
How old does a dog have to be before using the SportHunter® 825?	Your dog should be able to learn basic obedience commands such as “Sit” or “Stay.” The Collar Receiver may be too large for dogs under 8 pounds.
Once my dog is trained and has been obeying my commands, will my dog have to continue to wear the Collar Receiver?	Your dog may need to wear the Collar Receiver from time to time for reinforcement. Also, many hunters keep the Collar Receiver on their dogs while hunting for maximum control.
Is the Collar Receiver waterproof?	Yes. If the rechargeable battery pack ever needs to be replaced, make sure the o-ring and o-ring groove are free from dirt and debris.
Can my Collar Receiver be used around salt water?	Yes. However, if the Collar Receiver is used in or around salt water, it should be rinsed with fresh water following each use.
Can I use the SportHunter 825 with more than one dog?	Yes. The SportHunter 825 is expandable to a maximum of three dogs. SportDOG™ Add-A-Dog® Collar Receivers must be purchased. Please refer to the back cover for a list of compatible Collar Receivers.
Can I use the SportHunter 825 on aggressive dogs?	We do not recommend any of our products to be used on aggressive dogs. We recommend you contact your local veterinarian or professional trainer to determine if your dog might be aggressive.
Will I get exactly 1/2 mile of range with the SportHunter 825?	The range you get with your SportHunter 825 will vary according to terrain, weather, and vegetation as well as transmission from other radio devices. To get the maximum amount of range, please refer to the “How the System Works” section of this guide.
How long can I continuously deliver static stimulation to my dog?	The maximum amount of time you can press the Continuous Stimulation Button and deliver static stimulation to your dog continuously is 10 seconds. After 10 seconds, the Remote Transmitter will “time-out” for 5 seconds. The Continuous Stimulation Button must be released and pressed again.
What do I do if my dog’s neck becomes red and irritated?	This condition is due to the Contact Points irritating the skin. Discontinue use of the Collar Receiver for a few days. If the condition persists beyond 48 hours, see your veterinarian. Once the skin returns to normal, resume use, and monitor the skin condition closely.
The Intensity Dial seems difficult to rotate. Is this normal?	Yes. This prevents accidental changes in intensity and encourages an optimal waterproof seal. The knob will “break in” and be slightly easier to turn as you use it.
Can I attach a leash to the SportHunter 825?	DO NOT attach a leash to the SportHunter 825. You may put a separate non-metallic collar on your dog’s neck and attach a leash. Be sure the extra collar does not interfere with the Contact Points.
Can I program my SportHunter 825 to work with my other SportDOG Brand® systems?	Yes. You can program your SportHunter 825 to work with SD-425, SD-425S, SD-425CAMO, SD-1225, SD-1825, SD-1825CAMO, SD-1875, SD-2525, SD-3225, SD-1225E, SD-1825E, or SD-1875E systems. Because it operates at a different frequency it is not backwards compatible with any other SportDOG Brand system.
My Remote Transmitter is sending a signal to more than one Collar Receiver unintentionally; what should I do?	In the rare event this occurs, you can change your Remote Transmitter’s ID Code (see Change ID Codes on page 14) to solve this.

TROUBLESHOOTING

The answers to these questions should help you solve any problem you have with this system. If they do not, please contact the Customer Care Center at 1-800-732-0144, visit our website at www.sportdog.com, or view www.youtube.com/sportdogbrand for support videos.

My dog is not responding when I press a button.	<ul style="list-style-type: none"> • Check to see if the Collar Receiver has been turned on and the Indicator Light is flashing. • If your range has reduced from the first time you have used it, please check to see if the battery is low in either the Remote Transmitter or Collar Receiver. • Many factors can impact the range you have with the SportHunter 825. For a list of these factors, please refer to “How the System Works.” • You can verify the Collar Receiver is delivering stimulation to your dog by placing the test light, enclosed in your kit, on the Collar Receiver. Please refer to the “Test Light Instructions” section for details. • Increase the Intensity Dial. Refer to “Find the Best Intensity Level for Your Dog” for more information. • Increase the Stimulation Range. Refer to “Changing Stimulation Ranges” for more information. • Make sure the Collar Receiver’s Contact Points are placed snugly against your dog’s skin. Refer to “Fit the Collar Receiver” for more information. • You may need to switch to the longer Contact Points included with your system or trim the hair beneath the Contact Points. • If you notice your operating time dropping to about half the original time, your Collar Receiver battery needs to be replaced. Contact the Customer Care Center to purchase a new one.
The Collar Receiver will not turn on.	<ul style="list-style-type: none"> • Make sure the Collar Receiver has been charged. The Collar Receiver will charge in 2 hours.
The Collar Receiver is not responding to the Remote Transmitter.	<ul style="list-style-type: none"> • Make sure the Remote Transmitter has been charged. The Remote Transmitter will charge in 2 hours. • Verify the Collar Receiver has been turned on and the Indicator Light is flashing. Refer to “Turning the Collar Receiver On and Off.” • Refer to “Match the Collar Receiver and Remote Transmitter.”

TEST LIGHT INSTRUCTIONS



1. Turn the Collar Receiver on.
2. Hold the Test Light Contacts to the Contact Points.
3. Press a Static Stimulation Button on the Remote Transmitter.
4. The Test Light will flash.
5. Turn the Collar Receiver off.

NOTE: At higher static stimulation levels, the Test Light will flash brighter.

Save the Test Light for future testing.

NOTE: If the Test Light does not flash, recharge the battery and re-test. If the Test Light still does not flash, contact the Customer Care Center at 1-800-732-0144.

TERMS OF USE AND LIMITATION OF LIABILITY

1. TERMS OF USE

This Product is offered to you conditioned upon your acceptance without modification of the terms, conditions and notices contained herein. Usage of this Product implies acceptance of all such terms, conditions, and notices.

2. PROPER USE

This Product is designed for use with dogs where training is desired. The specific temperament of your dog may not work with this Product. We recommend that you not use this Product if your dog is less than 8 pounds or if your dog is aggressive. If you are unsure whether this is appropriate for your dog, please consult your veterinarian, certified trainer, or contact our Customer Care Center at 1-800-732-0144.

Proper use includes reviewing the entire Operating and Training Guide provided with your Product and any specific Caution statements.

3. NO UNLAWFUL OR PROHIBITED USE

This Product is designed for use with dogs only. This dog training device is not intended to harm, injure, or provoke. Using this Product in a way that is not intended could result in violation of Federal, State, or local laws.

4. LIMITATION OF LIABILITY

In no event shall Radio Systems® Corporation be liable for any direct, indirect, punitive, incidental, special or consequential damages, or any damages whatsoever arising out of or connected with the use or misuse of this Product. Buyer assumes all risks and liability from the use of this Product.

5. MODIFICATION OF TERMS AND CONDITIONS

Radio Systems Corporation reserves the right to change the terms, conditions, and notices under which this Product is offered.

FCC COMPLIANCE

This device complies with part 15 of the FCC Rules. Operation is subject to the following two conditions: (1) This device may not cause harmful interference, and (2) this device must accept any interference received, including interference that may cause undesired operation.

This equipment has been tested and found to comply with the limits for a Class B digital device, pursuant to part 15 of the FCC Rules. These limits are designed to provide reasonable protection against harmful interference in a residential installation. This equipment generates, uses, and can radiate radio frequency energy and, if not installed and used in accordance with the instructions, may cause harmful interference to radio communications. However, there is no guarantee that interference will not occur in a specific installation. If interference does occur to radio or television reception, which can be determined by turning the equipment off and on, the user is encouraged to try to correct the interference by one or more of the following measures:

- Reorient or relocate the receiving antenna.
- Increase the separation between the equipment and the receiver.
- Connect the equipment to an outlet on a circuit different from that to which the receiver is connected.
- Contact customer service or an experienced radio/TV technician for assistance.

CAUTION

Unauthorized changes or modifications to the equipment may violate FCC regulations and could void the user's authority to operate the equipment.



BATTERY DISPOSAL

⚠WARNING See Important Safety Information related to the battery on page 2.

This system operates on two Li-Ion battery packs (160mAh capacity for the Collar Receiver and 500mAh 7.4V capacity for the Remote Transmitter). Only replace with battery received from calling the Customer Care Center at 1-800-732-0144.

Separate collection of spent batteries is required in many regions; check the regulations in your area before discarding spent batteries. Please see below for instructions on how to remove the battery from the product for separate disposal. If you wish to ship us your spent batteries for disposal, contact the Customer Care Center.

AT END OF PRODUCT LIFE, USE THESE BATTERY REMOVAL INSTRUCTIONS FOR FINAL DISPOSAL (DO NOT OPEN THE COLLAR RECEIVER OR REMOTE TRANSMITTER UNTIL YOU HAVE RECEIVED THE REPLACEMENT):

- Using a #1 Phillips screwdriver for your Remote Transmitter and/or a 3/32 Allen wrench for your Collar Receiver, remove the case screws.
- Remove the case back or cover.
- Remove the old battery pack.

⚠WARNING

- When removing the old battery pack, care must be taken when gripping the connector firmly to avoid damaging the wires. Shorting the battery wires may cause fire or explosion.
- These instructions are not valid for repair or battery replacement. Replacing the battery with a battery not specifically approved by Radio Systems® Corporation may cause fire or explosion. Please call the Customer Care Center at 1-800-732-0144 to avoid invalidating your warranty.

This product is protected by the following patents:

U.S. Patent Numbers: 6,901,883; 6,459,378; 7,647,545; 7,420,136; 6,184,790



**GEAR THE WAY
YOU'D DESIGN IT®**



SPORTDOG BRAND® ADD-A-DOG® COLLAR RECEIVERS

SPORTDOG.COM

WETLANDHUNTER®
SDR::AC ADD-A-DOG



FIELDTRAINER®
SDR::AS ADD-A-DOG



FIELDTRAINER
SDR::AF ADD-A-DOG



NOTE: SDR-FS, SDR-FSE, SDR-FH, SDR, SDR-CH, SDR-FC ADD-A-DOG COLLARS ARE NOT COMPATIBLE WITH THIS SYSTEM.
SDR-A, SDR-AE, SDR-AW, SDR-AH, SDR-AB ADD-A-DOG COLLARS ARE COMPATIBLE WITH THIS SYSTEM.

GEAR THE WAY YOU'D DESIGN IT®

©2012 RADIO SYSTEMS CORPORATION

Radio Systems® Corporation • 10427 PetSafe Way • Knoxville, TN 37932 • 1-800-732-0144
400-1568