

6. ACCESSORIES:

Extra MS-5 Ultrasonic Collar



Digital circuitry in this state of the art design provides a strong signal and maintains accuracy over all temperature ranges. It is extra rugged so it won't get damaged during your dog's "ruff housing". With a robust, fully enclosed ultrasonic transducer speaker, it is immersible to 6ft., and although we don't recommend immersing your dog in 6 ft. of water without scuba gear, the collar will stay high and dry! The MS-5 uses our specially designed B-3V1A battery which lasts about 3 months and prevents damage to the circuitry if the battery is installed incorrectly. Model: MS-5 Replacement Battery:

Pet Door Battery



Pet Door Backup Battery – B12V-1.3
Installation in door enables automatic switching to this backup battery when AC power is temporarily lost.

Aluminum Wall Tunnel



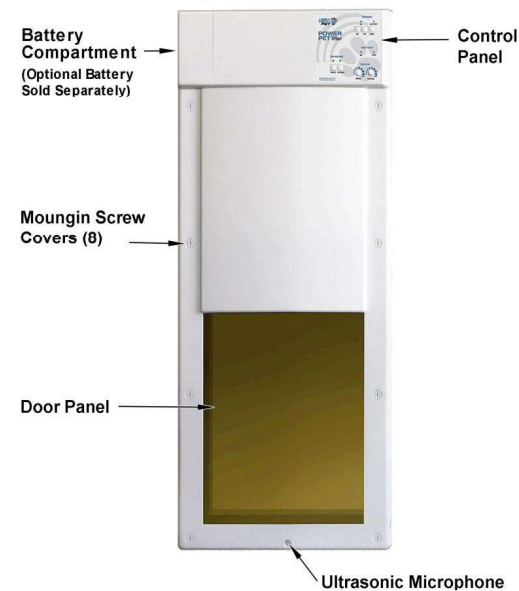
Quickly, Easily and Professionally frame your large Power Pet Door wall installation with our pre made Wall Adapter Tunnel. Professional looking wall installation is easy with your pre-fabricated Wall Adapter Tunnel. Your Model WA-2 Wall Adapter Tunnel eliminates the need for difficult framing of the hole you cut in your wall for the pet door passage way. Made of heavy gauge aluminum with a super tough industrial powder coat finish. Medium, Model AW-PX1 Large: Model AW-PX2



WiFi Power Pet Door®

INSTALLATION & OPERATING INSTRUCTIONS

1.INTRODUCTION:



Product Description: Your new WiFi Power Pet Electronic Pet Door is like no other pet door made. Genuine Power Pet electronic pet doors are fully automatic, motor driven and open completely under their own power. Activated by an ultrasonic pet collar, your new Power Pet door will keep out stray animals. It is secure against wind, rain, cold and snow and provides much better insulation than a conventional flap door. Your new Power Pet door features an attractive, high-strength door panel that quickly and quietly powers upward disappearing into the stylish housing. Your pets are empowered to come and go as they please while their animal friends are politely asked to stay out.

Power Pet doors increase home security with a special automatic, dead bolt locking feature that guards against would-be intruders. Only the coded Signal from your pet's collar will open the **Power Pet** door.

Only **Power Pet** doors feature an ingenious directional sensing system that operates a fully automatic, motor driven panel. The signal emitted from your pet's collar tells the **Power Pet** door how far away your pet is and the direction in which your pet is traveling. This allows the **Power Pet** door to work like magic, opening only when your pet is on a direct approach, not when it is just wandering by and not when it is sitting or sleeping next to the door.

BASIC PET DOOR OPERATION:



Your **Power Pet** door uses our Patented directional ultrasonic sensing system. This system has great advantages over magnetic or radio transmitter collars.

Magnetic collars have a very limited range making it tough to train the pet to operate the door. Radio systems have good range but open whenever the animal is within that range, even if the pet is sitting, sleeping or just wandering by.

The **Power Pet** door's directional ultrasonic system overcomes these problems. The Pet worn ultrasonic collar emits a highly directional signal, which is received by the microphone

only when your pet is directly facing the door opening. The unit is not likely to trigger if your pet is just wandering by.

Typically, the ultrasonic signal is bounced off the ground in the direction which your pet is facing. This means that surfaces which are highly reflective such as tile and linoleum will result in a longer working range than acoustically absorbent surfaces such as carpeting.

2. INSTALLING YOUR WiFi POWER PET DOOR

Your WiFi POWER PET door package includes:

- One Pet Transmitter Collar (Model MS-5 Standard Ultrasonic Transmitter Collar)
- 110 volt AC Adapter
- Outside Bezel
- All Required Hardware

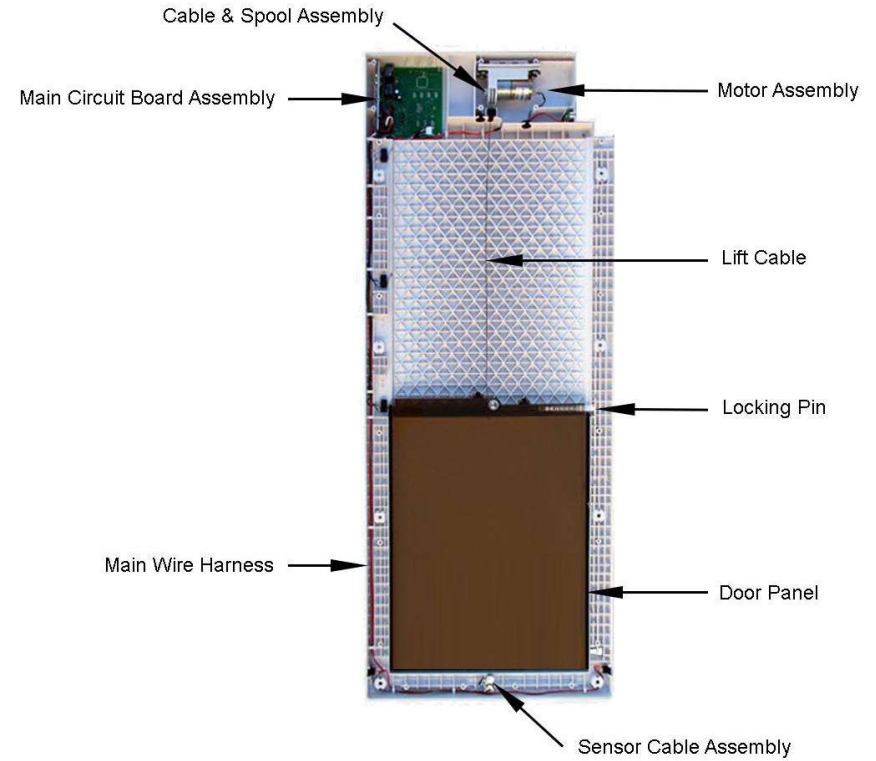
Please Note: (Wall Adapter Tunnel, Rechargeable Battery, Battery Charger Kit and Extra Transmitter Collars are sold separately.)



Your **Power Pet** door mounts flush to any door or wall. The hardest part of installing the **Power Pet** door is cutting the hole. If the unit is to be mounted in an existing door up to 1 3/4" thick there is no framing necessary. The pre-made Outside Bezel that came with your **Power Pet** door will provide a finished look to the opening. If you are installing

5. TROUBLESHOOTING GUIDE:

Your Power Pet door comes with a full one-year repair/ replacement warranty. It's designed and built to last a lifetime. However, should you encounter a failure after your warranty has expired, here are some useful troubleshooting tips.



POWER PET DOOR TROUBLE SHOOTING GUIDE

Failure	Possible Solution
Door panel goes up and down without stopping	Slightly loosen pet door mounting screws Replace Main Wire Harness Replace Main Circuit Board
Very short range on one or both sensors	Replace Sensor Cable Replace Main Circuit Board
Manual button works but door is not triggered by collar	Replace Collar Replace Sensor Cable Replace Main Circuit Board
Door goes up too slowly	Replace Motor Assembly Replace Main Circuit Board
Door sticks at top	Replace Motor Assembly Replace Main Circuit Board
Door seems to sometimes open by itself	Reduce range settings on front panel
Door does not open with manual button or collars	Replace Main Circuit Board
Range is Difficult to adjust to less than 5 feet	Replace Main Circuit Board
Collar light does not operate or collar does not open door	Replace Battery with High Tech Pet Model R-3V1A Replace Collar

INSTALLING/REPLACING THE MS-5 BATTERY

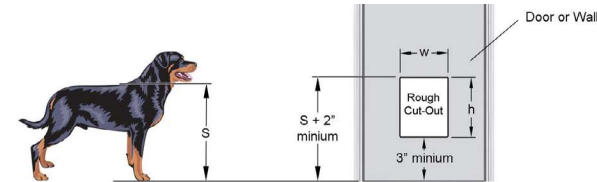
NOTE: The B3V1A Battery (pictured right) is the *ONLY* battery that is compatible with the MS-5 collar. Do not attempt to use any other battery in the MS-5 collar.



NOTE: Some collars are shipped with a battery pre-installed. If the battery is not already pre-installed in the collar, install the battery using the following instructions.

<p>1. Unscrew the bottom cover.</p>	
<p>2. Pry bottom off at the location shown here, using a small flat-blade screwdriver or metal nail file.</p>	
<p>3. Remove bottom, note battery orientation</p>	
<p>4. Remove and replace B3V1A battery</p>	
<p>5. With new battery installed, close case. Squeeze until bottom flush with top, by squeezing top and bottom together</p>	
<p>6. Insert and tighten screw.</p>	

your **Power Pet** door in a wall, it is advisable to build a frame around the opening or order our convenient WALL ADAPTER TUNNEL. The hole dimensions given below are for the finished opening not including the frame. Dimensions of the frame you build should be added to the opening size to determine the final size of the hole you cut in your wall.



Position rough cut-out 2 inches above shoulder height or 3 inches above floor, whichever is higher.

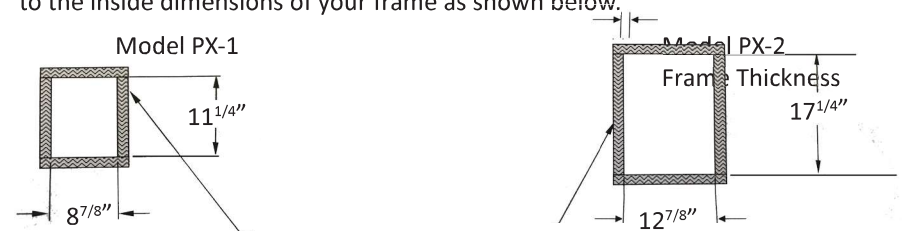
POSITIONING THE OPENING IN DOOR OR WALL

Note: If you have multiple pets of different sizes use the positioning method above based upon the size of your largest pet.

Rough Cut-Out Dimensions		
Size	Width	Height
PX-1 (Medium)	8 ⁷ / ₈ "	11 ¹ / ₄ "
PX-2 (Large)	12 ⁷ / ₈ "	17 ¹ / ₄ "

FRAMING THE OPENING

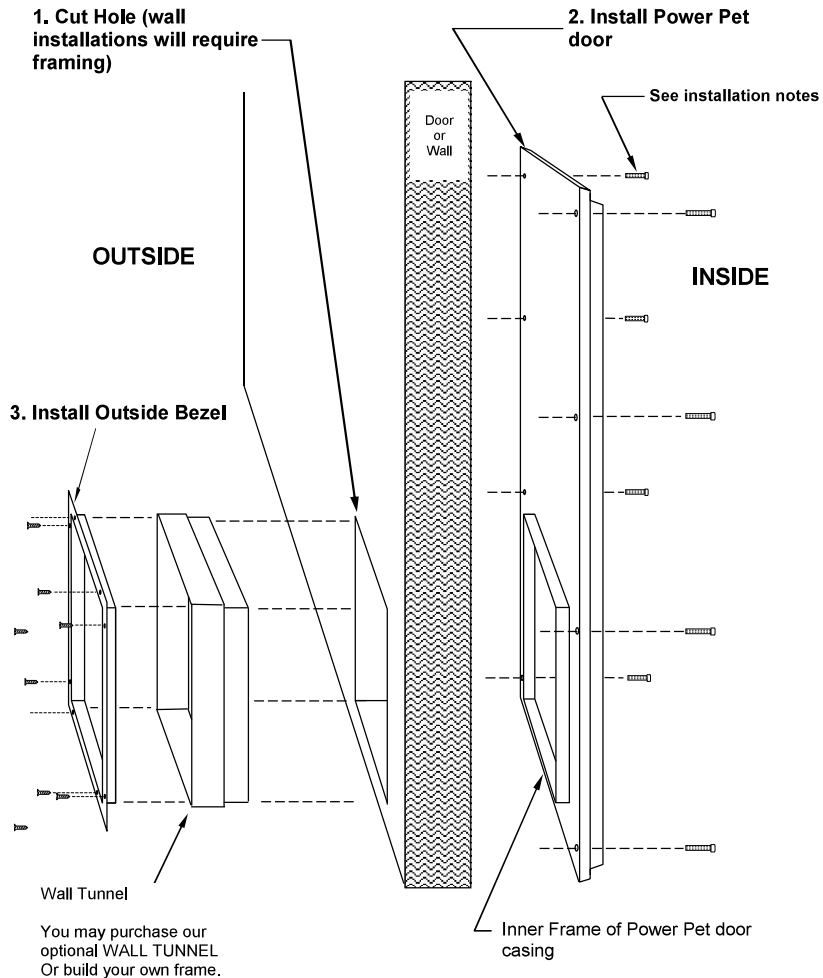
To frame your opening we highly recommend you purchase the optional Wall Tunnel which will make framing easy for a professional quality job. If you choose to make your own frame, note that the rough opening dimensions apply to the inside dimensions of your frame as shown below.



Final cut out size should include the thickness of any additional wall framing (not required for door mount or when using optional wall mount kit)

MOUNTING YOUR WiFi POWER PET DOOR

This is the easy part. Install the POWER PET and Outside Frame as shown below.

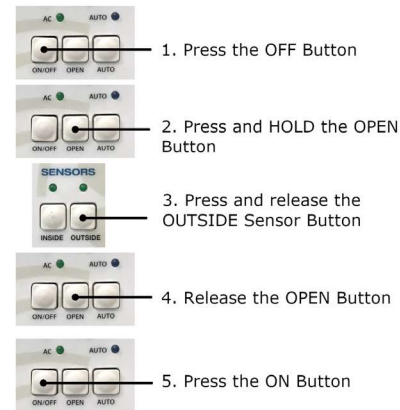


IMPORTANT INSTALLATION NOTES:

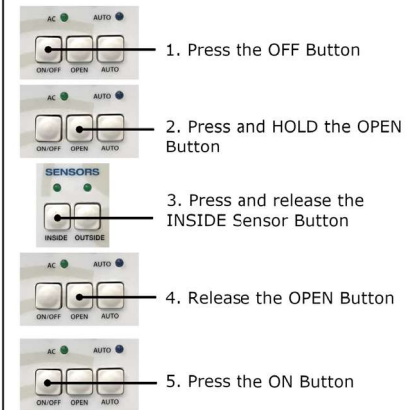
- When installing the inside mounting screws, make sure they are only moderately tight. Overtightening will cause your Power Pet door housing to conform to any irregularities in the flatness of your door or wall and may cause the door panel to slow, stick or malfunction. Do not use a power screwdriver. Use a manual screw driver to tighten the screws until they stop. That is enough to ensure that the installation is secure. Should your door panel malfunction during the initial power up, loosen each mounting screw and re-test.

Disabling the Auto Retract Feature: Under unusual conditions, such as a warped wall mounting, the door sometimes may close so slowly that the auto-retract feature triggers the door to re-open unnecessarily. In these cases it may be desirable to defeat the Automatic Safety Retract feature. Do this by first pressing the ON/OFF button until all the lights are off. Leave the door powered by the AC adapter or battery when you do this. Then while holding down the OPEN button, press and release the OUTSIDE SENSOR button. The OUTSIDE light will blink to indicate the feature has been disabled. Press the ON button to resume normal door operation.

Disable Auto Retract



Enable Auto Retract

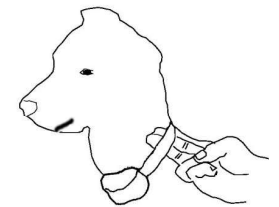


Enabling the Auto Retract Feature: You may enable the Automatic Safety Retract feature at any time. Do this by first pressing the ON/OFF button until all the lights are off. Leave the door powered by the AC adapter or battery when you do this. Then while holding down the OPEN button, press and release the INSIDE SENSOR button. The INSIDE light will blink to indicate the feature has been enabled. Press the ON button to resume normal door operation.

4. MS-5 ULTRASONIC PET COLLAR INSTRUCTIONS:

Fitting the MS-5 Electronic Collar on Your Dog

- Place the collar on your pet with the electronic at the throat as shown.
- When properly fitted, the receiver collar should not move on the dog, but also should not be overly tight. You should be able to fit your fingers between the strap and your pet's neck.



Note: The collar needs to be positioned on the bottom of your pet's neck, facing down, in order to trigger the door and barriers correctly.

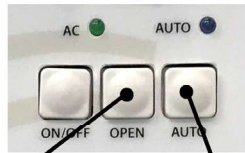
AUTOMATIC CLOSE Control: Your Power Pet door features a smart sensing circuit that keeps the door panel open as long as it is receiving the signal from your pet's collar. Once your pet's collar has moved through the opening, the panel Holds Up for a few seconds longer to allow slow pets to get their body completely through the opening. The Hold up Time can be configured for 2 seconds, 4 seconds, or 6

Sensor Button		Hold-Up Time
Inside	Outside	
●		2 Seconds
	●	4 Seconds
●	●	6 Seconds

seconds using the instructions above. Once the pet is used to going through the door, 2 seconds is usually adequate. During introduction of the pet to the door, 4 or 6 seconds can be used so as to not spook the pet with the closing noise

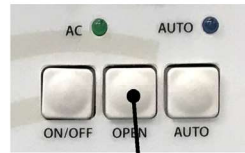
HOLD OPEN FEATURE: If you wish to leave the door open for an extended time period, use the Hold Open Feature. This allows the door to remain open as long as power is available.

Enable Hold Open Feature



1. Hold the OPEN button
2. Tap the AUTO button
3. Release the OPEN button
4. To return to normal operation just press the OPEN button

Disable Hold Open Feature



Press the OPEN Button

Note that this feature requires the motor to be energized the entire time the door is open. So, if using only a battery to power the door, and you do not have an AC Power Adaptor plugged into the door, use this feature sparingly to keep from discharging the battery in just a few hours

AUTOMATIC SAFETY RETRACT: Your Power Pet door is intrinsically safe for all pets and people, including small children. The door panel weighs less than 2 lbs. and is closed smoothly by gravity (not the motor) and is too light to cause any physical injury. However, just to be doubly safe around infants, we've included an automatic safety retract feature. This feature causes the panel to instantly retract if it encounters an obstruction during closure.

- Note that screw covers (not pictured) are provided to finish the screw holes. Once installed, the screw covers on the inside unit may be removed by twisting CLOCKWISE using a coin or flathead screwdriver. Twisting counter-clockwise will cause the screw covers to break. Screw covers on the outside bezel may be removed by prying off with a knife blade or thin flat object.

3. WiFi POWER PET DOOR OPERATION:

In addition to all the features of our acclaimed Power Pet Door, the WiFi Power Pet door includes full setup, control and monitoring of the door using a smart phone. It also includes fully automatic daily and weekly timers to reactivate your pet's ability to enter and leave the house or building at particular times.

NOTE: For proper operation of the WiFi features, the Door must be within range of your home WiFi and have access to the internet through that WiFi.

INTRINSICALLY SAFE OPERATION

The WiFi Power Pet door is intrinsically safe. It uses an electric motor and cable drive to lift the door panel. The panel remains open until the pet collar signal is gone, indicating that your pet is clear of the opening. When the pet collar signal is gone, power to the motor is turned off and the panel is returned by the force of gravity only. Downward speed is reduced by an electronic brake applied to the reverse motion of the motor. This brake operates with or without electrical power. Because the panel is returned by simple gravity, the maximum force that can be applied by the panel when it is closing is limited to its own weight. The door panel weighs only about 2 lbs.

AUTO RETRACT FEATURE

As an added safety feature, the door also has a sensing system that automatically raises the panel should it encounter an obstruction on the way down. This feature can be defeated in the unusual case that binding or other restriction slows the door closure to the point that it unnecessarily retracts. See the AUTOMATIC SAFETY RETRACT Section below for more information.

AUTO DEAD BOLT LOCKING FEATURE

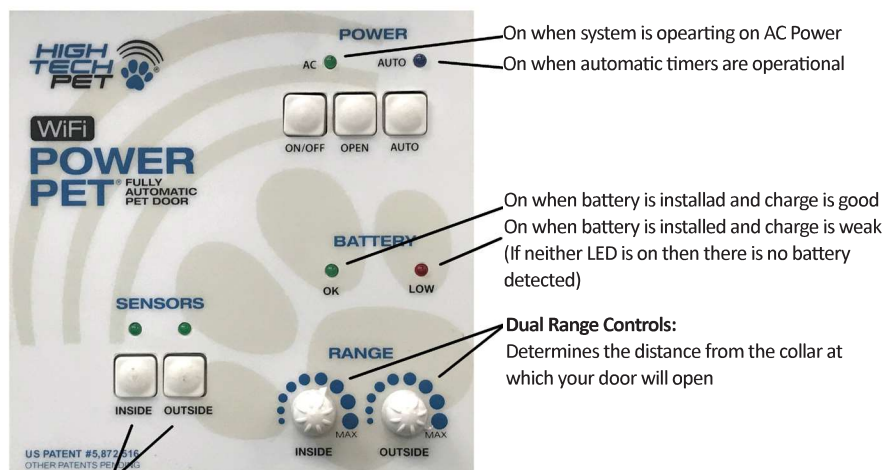
As shown in Figure 7, the door uses a spring loaded locking pin which automatically snaps into its retaining hole when the movable panel comes to rest in the closed position. The pin can only be released when the motor applies tension to the cable. This makes it impossible for even the most clever animals (and people) to raise the panel mechanically.

TWO POWER CHOICES:

1. **AC Powered Only:** Your WiFi Power Pet door comes standard with a 110 Volt AC Wall Adaptor that plugs into a nearby wall outlet. The adapter cable then plugs into one of the two jacks on the bottom left and right sides of the door frame.
2. **AC with Battery Back-up:** You may purchase our B12V-1.3 battery and install it in the Battery Compartment shown on page 1. Thereafter the door will automatically switch to battery power whenever an AC power outage occurs. This battery will power the door for several days by itself. When power is restored, the AC adapter resumes powering the door, and automatically recharge the backup battery so it is ready ready for the next power loss.

NOTE: When operating the **WiFi Power Pet** door under Battery Power (AC power loss), the WiFi link is turned off after five minutes - to extend the battery life. Thus you can not remotely monitor, control, or configure the door unless someone physically presses the OPEN button on the door and then you link your Smart Phone app to it with 5 minutes. Once linked, the app will work for as long as you continue to use it. All other features of the door, including Automatic Timers, work normally no matter how you power the door.

CONTROL PANEL



Sensor Controls:

LED indicates sensor is active
 Inside sensor allows pet to go outside
 Outside sensor allows pet to come inside

4-WAY ACCESS CONTROL: Individual activation buttons for the inside and outside sensors give you a 4-way access control system. You can allow your pet to come in but not go out, go out but not come in, come in and out, or close and lock the door altogether

AUTO TIMERS Button: The AUTO timers button enables or disables the entire auto timer system which is configured by the **Power Pet** smart phone app. A Timer automatically controls the inside and outside sensors, based on a schedule set in the Power Pet app. See the app for more information. This feature should be turned off until you set it up with the app.

REMOTE CONTROL: The **WiFi Power Pet** door can be remotely monitored and controlled via the Power Pet smart phone app. See the app for more information.

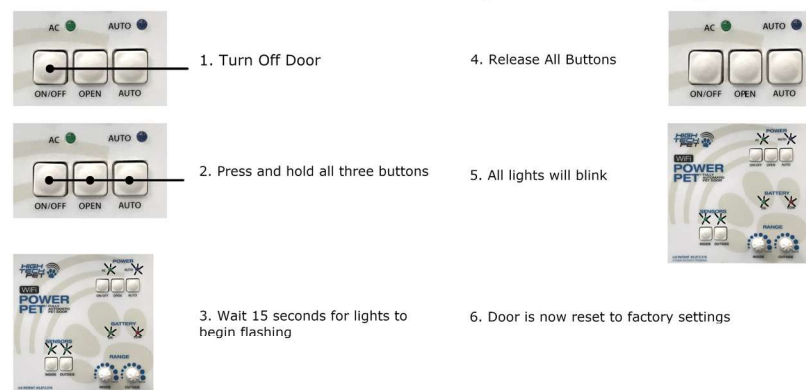
POWER PET APP: The Power Pet app is available on the Apple App Store for iPhone, or the Google Play Store for Android. Search for "Power Pet" on your app store.

RESETTING THE WiFi POWER PET DOOR TO FACTORY DEFAULTS:

CAUTION: Resetting the Pet door will remove saved WiFi settings, and the door must be added to the App as a new door.

You may reset the **WiFi Power Pet** door to factory default settings by turning the door off and then holding down all three of the top buttons (ON/OFF, OPEN, AUTO) for 15 seconds. When all lights begin to blink, release all three buttons and the door will restart with the factory default settings.

Reset Door To Factory Default Settings



Dual RANGE Controls: Individual range control to allow you to adjust different activation distances for inside and outside of your home. (Usually, it's a good idea to use a short inside distance of a foot or two and a longer 4 to 5 foot distance outside.) Your new Power Pet door gives you full control.

Normal setting of the range knob is between the markings 5th and 7th dot. When you first install the Power Pet door set both range control knobs at about 6th dot, and then while loosely holding the strap of the collar, move the hanging collar back and forth toward the door to determine the range at which it opens. Increase the knob position slightly to get longer range. Decrease the knob slightly to get shorter range.

Just as your hearing of a conversation can be overpowered by loud noises such as a lawn mower, the door sensors can also be overpowered by loud ultrasonic noises. Specifically some sprinklers, lawn mowers and vacuum cleaners can put out enough noise to temporarily mask the collar signal. The **Power Pet** door has a unique feature which indicates when the background noise level is too high. Whenever the INSIDE noise is too loud, the INSIDE light will flicker or flash on. This means you may want to decrease the INSIDE knob setting slightly. Likewise, whenever the OUTSIDE noise is too high, the OUTSIDE light will flicker or flash on. This means you may want to decrease slightly the OUTSIDE knob setting. A little flickering once in a while is normal. A lot of flickering or continuous flashing means the knob is set too high.