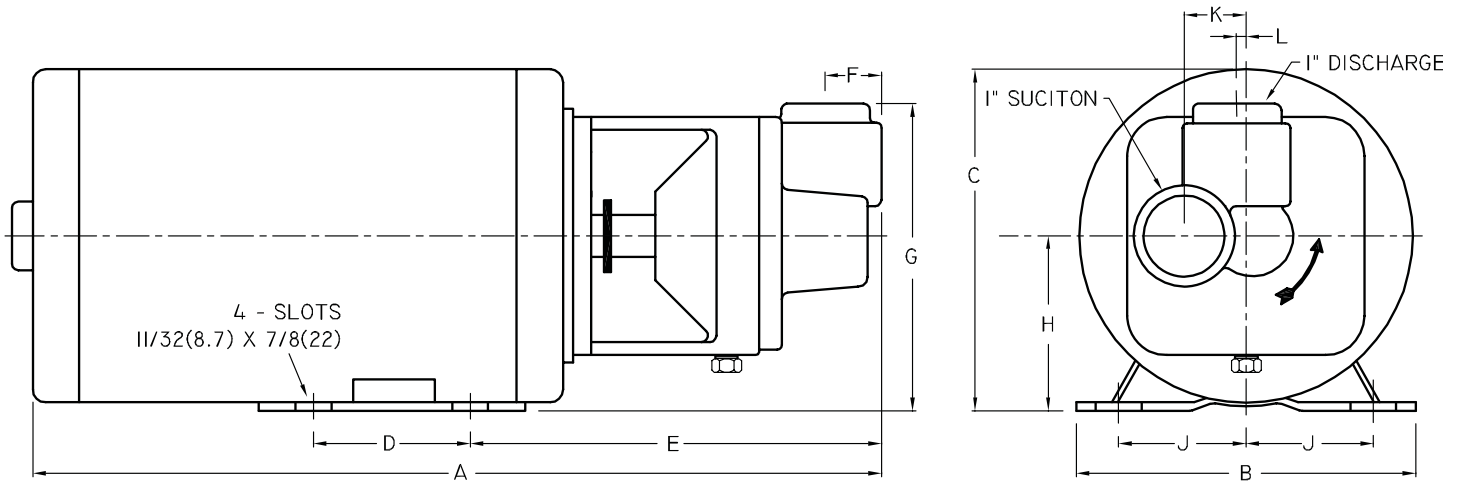


### Close Coupled Turbine Pumps



DIMENSIONS IN INCHES (mm)															
Series	HP	Tappings		1 PH A	3 PH A	B	C	D	E	F	G	H	J	K	L
		Disc. NPT	Suct. NPT												
4CT	1/4	1	1	16¼ (413)	----	6½ (165)	6⅝ (168)	3 (76)	7⅞ (200)	1 (25)	5⅞ (149)	3½ (89)	27/16 (62)	1⅝/32 (29)	3/16 (4.8)
CT	1/3	1	1	16¼ (413)	16¼ (413)	6½ (165)	6⅝ (168)	3 (76)	7⅞ (200)	1 (25)	5⅞ (149)	3½ (89)	27/16 (62)	1⅝/32 (29)	3/16 (4.8)
	1/2	1	1												
	3/4	1	1												

Dimensions shown above are approximate maximum dimensions for standard pumps equipped with open drip-proof motors.

**A strainer, approximately 20 mesh, should be installed on the suction side of the pump to prevent chips, scale or hard foreign particales from entering the pump and damaging the raceway and impeller.**