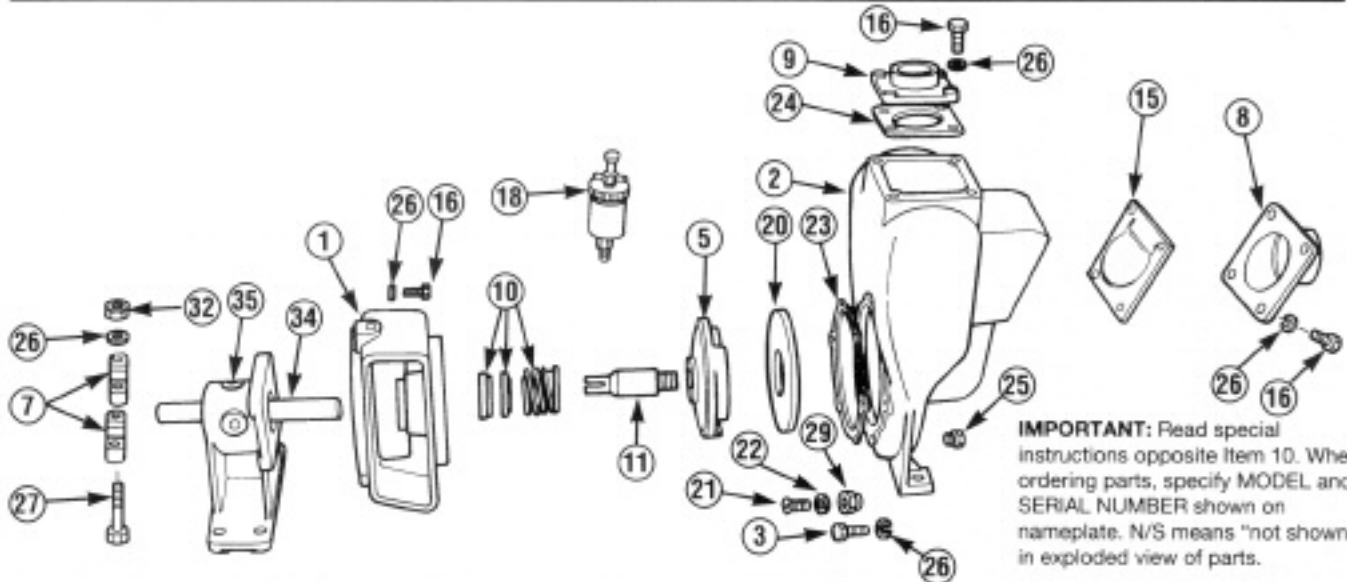


MP PUMPS SERVICE PARTS LIST

- Self-Priming • Pumpak
- Pedestal Mount for Belt or Direct Drive

FLOMAX 5 1 1/2" x 1 1/2" Pipe Size
FLOMAX 8 2" x 2" Pipe Size



IMPORTANT: Read special instructions opposite item 10. When ordering parts, specify MODEL and SERIAL NUMBER shown on nameplate. N/S means "not shown" in exploded view of parts.

| ITEM NO. | PART NO. | DESCRIPTION | QUANTITY REQUIRED PER MODEL | | | | | | |
|----------------|----------|--|-----------------------------|-------|----------|-------|--------|-------|-------|
| | | | CAST IRON | | ALUMINUM | | BRONZE | | |
| | | | FLOMAX | | | | | | |
| | | | 5 | 8 | 5 | 8 | 5 | 8 | |
| | | | MODEL NO. | 21312 | 21339 | 21310 | 21336 | 21311 | 21338 |
| ADAPTOR | | | | | | | | | |
| 1 | 22247 | Adaptor — Cast Iron | | 1 | | | | | |
| 1 | 22245 | Adaptor — Aluminum | | | | 1 | 1 | | |
| 1 | 22246 | Adaptor — Bronze | | | | | | 1 | 1 |
| 1 | 24865 | Adaptor — Cast Iron — Grease Seal — Optional | | | | | | | |
| 1 | 24007 | Adaptor — Aluminum — Grease Seal — Optional | | | | | | | |
| HOUSING | | | | | | | | | |
| 2 | 23021 | Housing Assembly — Cast Iron — Inc. | 1 | 1 | | | | | |
| | | Housing — Cast Iron | 1 | 1 | | | | | |
| 16 | 21242 | Capscrew — Discharge Flange | 6 | 8 | | | | | |
| 3 | 24965 | Capscrew S.S. 5/16" x 3/4" | 6 | 6 | | | | | |
| 26 | 21238 | Lockwasher | 6 | 8 | | | | | |
| 25 | 21267 | Pipe Plug | 1 | 1 | | | | | |
| 2 | 23019 | Housing Assembly — Aluminum — Inc. | | | 1 | 1 | | | |
| | | Housing — Aluminum | | | 1 | 1 | | | |
| 16 | 21242 | Capscrew — Flange — Dis. & Suc. | | | 8 | 8 | | | |
| 3 | 24965 | Capscrew S.S. 5/16" x 3/4" | | | 6 | 6 | | | |
| 26 | 21238 | Lockwasher | | | 8 | 8 | | | |
| 25 | 21267 | Pipe Plug | | | 1 | 1 | | | |
| 2 | 23020 | Housing Assembly — Bronze — Inc. | | | | | | 1 | 1 |
| | | Housing — Bronze | | | | | | 1 | 1 |
| 16 | 21242 | Capscrew — Flange — Dis. & Suc. | | | | | | 8 | 8 |
| 3 | 24965 | Capscrew S.S. 5/16" x 3/4" | | | | | | 6 | 6 |
| 26 | 21238 | Lockwasher | | | | | | 8 | 8 |
| 25 | 21267 | Pipe Plug | | | | | | 1 | 1 |
| CLAMP | | | | | | | | | |
| 7 | 23002 | Clamp Assembly — Includes: | 1 | 1 | 1 | 1 | 1 | 1 | 1 |
| | | Clamp | 2 | 2 | 2 | 2 | 2 | 2 | 2 |
| 27 | 21264 | Capscrew 5/16"-18 x 1-3/4" | 2 | 2 | 2 | 2 | 2 | 2 | 2 |
| 32 | 21284 | Hex Nut 5/16"-18 | 2 | 2 | 2 | 2 | 2 | 2 | 2 |
| 26 | 21238 | Lockwasher 5/16" | 2 | 2 | 2 | 2 | 2 | 2 | 2 |



MP PUMPS, INC.

34800 BENNETT • FRASER, MI 48026-1686
 (586) 293-8240 • FAX (586) 293-8469
 (800) 563-8006 • www.mppumps.com

FORM 7002-F

PRINTED IN U.S.A. (Rev. 4-05)

MP PUMPS SERVICE PARTS LIST

| ITEM NO. | PART NO. | DESCRIPTION | QUANTITY REQUIRED PER MODEL | | | | | | |
|--------------------------|----------|---|-----------------------------|-------|----------|-------|--------|-------|---|
| | | | FLOMAX | | ALUMINUM | | BRONZE | | |
| | | | MODEL NO. | 5 | 8 | 5 | 8 | 5 | 8 |
| | | | 21312 | 21339 | 21310 | 21336 | 21311 | 21338 | |
| IMPELLER | | | | | | | | | |
| 5 | 22293 | Impeller — Cast Iron — 5.0" Dia. | | 1 | 1 | | | | |
| 5 | 24585 | Impeller — Cast Iron — 4.6" Dia. | | | | | | | |
| 5 | 25139 | Impeller — Cast Iron — 4.1" Dia. | | | | | | | |
| 5 | 22294 | Impeller — Stainless Steel — (Optional) | 1 | 1 | 1 | 1 | 1 | 1 | |
| 5 | 22291 | Impeller — Aluminum — 5.0" Dia. | | | 1 | 1 | | | |
| 5 | 22292 | Impeller — Bronze — 5.0" Dia. | | | | | 1 | 1 | |
| 36 | 22655 | Impeller Lock Nut — S.S. | 1 | 1 | 1 | 1 | 1 | 1 | |
| 11 | 22286 | Drive Sleeve — S.S. 3/4" Bore | 1 | 1 | 1 | 1 | 1 | 1 | |
| FLANGE | | | | | | | | | |
| 8 | 22263 | Flange — Suction — Cast Iron — 1-1/2" | 1 | | | | | | |
| 8 | 22387 | Flange — Suction — Cast Iron — 2" | | 1 | | | | | |
| 8 | 22261 | Flange — Suction — Aluminum — 1-1/2" | | | 1 | | | | |
| 8 | 22385 | Flange — Suction — Aluminum — 2" | | | | 1 | | | |
| 8 | 22262 | Flange — Suction — Bronze — 1-1/2" | | | | | 1 | | |
| 8 | 22386 | Flange — Suction — Bronze — 2" | | | | | | 1 | |
| 9 | 22266 | Flange — Discharge — Cast Iron — 1-1/2" | 1 | | | | | | |
| 9 | 22311 | Flange — Discharge — Cast Iron — 2" | | 1 | | | | | |
| 9 | 22264 | Flange — Discharge — Aluminum — 1-1/2" | | | 1 | | | | |
| 9 | 22309 | Flange — Discharge — Aluminum — 2" | | | | 1 | | | |
| 9 | 22265 | Flange — Discharge — Bronze — 1-1/2" | | | | | 1 | | |
| 9 | 22310 | Flange — Discharge — Bronze — 2" | | | | | | 1 | |
| SEAL | | | | | | | | | |
| 10 | | Be sure to specify whether you want the self-lubricated seal or the grease-lubricated seal. Seals for special applications are available. Please consult factory. | | | | | | | |
| 10 | 22272 | Seal Assembly — Self-Lubricated — | 1 | 1 | 1 | 1 | 1 | 1 | |
| 10 | 22290 | Seal Assembly — Grease-Lubricated | 1 | 1 | 1 | 1 | 1 | 1 | |
| 18 | 22313 | Grease Cup | 1 | 1 | 1 | 1 | | | |
| FLAPPER | | | | | | | | | |
| 15 | 23022 | Flapper Assembly | 1 | 1 | 1 | 1 | 1 | 1 | |
| 15 | 26097 | Flapper Assembly — EPDM — Optional | 1 | 1 | 1 | 1 | | | |
| WEAR PLATE | | | | | | | | | |
| 20 | 23024 | Wear Plate Assembly — Steel — Inc.: | 1 | 1 | | | | | |
| | | Wear Plate — Steel | 1 | 1 | | | | | |
| 21 | 21249 | Flat Head Screw — 5/16"-18 x 1" | 2 | 2 | | | | | |
| 22 | 21248 | Annular Gasket | 2 | 2 | | | | | |
| 20 | 22270 | Wear Plate Assembly — Aluminum — Inc.: | | | 1 | 1 | | | |
| | | Wear Plate — Aluminum | | | 1 | 1 | | | |
| 21 | 21249 | Flat Head Screw — 5/16"-18 x 1" | | | 2 | 2 | | | |
| 22 | 21248 | Annular Gasket | | | 2 | 2 | | | |
| 20 | 22271 | Wear Plate Assembly — Bronze — Inc.: | | | | | 1 | 1 | |
| | | Wear Plate — Bronze | | | | | 1 | 1 | |
| 21 | 21249 | Flat Head Screw — 5/16"-18 x 1" | | | | | 2 | 2 | |
| 22 | 21248 | Annular Gasket | | | | | 2 | 2 | |
| GASKET | | | | | | | | | |
| 23 | 22255 | Gasket | 1 | 1 | 1 | 1 | 1 | 1 | |
| 24 | 22256 | Gasket — Outlet | 1 | 1 | 1 | 1 | 1 | 1 | |
| 24 | 25933 | Gasket — EPDM — Optional | 1 | 1 | 1 | 1 | | | |
| 29 | 21237 | Acorn Nut — 5/16"-18 | 2 | 2 | 2 | 2 | 2 | 2 | |
| PEDESTAL ASSEMBLY | | | | | | | | | |
| 34 | 26142 | Pedestal Assembly — Inc.: | 1 | 1 | 1 | 1 | 1 | 1 | |
| 34 | 26140 | Pedestal Body | 1 | 1 | 1 | 1 | 1 | 1 | |
| 35 | 22321 | Woodruff Key #11 | 1 | 1 | 1 | 1 | 1 | 1 | |
| 16 | 21242 | Capscrew 5/16"-18 x 7/8" | 4 | 4 | 4 | 4 | 4 | 4 | |
| 26 | 21238 | Lockwasher S.S. 5/16" | 4 | 4 | 4 | 4 | 4 | 4 | |
| N/S | 26085 | Shaft | 1 | 1 | 1 | 1 | 1 | 1 | |
| N/S | 22300 | Ball Bearing | 2 | 2 | 2 | 2 | 2 | 2 | |
| N/S | 21695 | Snap Ring | 1 | 1 | 1 | 1 | 1 | 1 | |

N/S — NOT SHOWN



MP PUMPS, INC.

34800 BENNETT • FRASER, MI 48026-1686
 (586) 293-8240 • FAX (586) 293-8469
 (800) 563-8006 • www.mppumps.com

FORM 7002-F

PRINTED IN U.S.A. (Rev. 4-05)