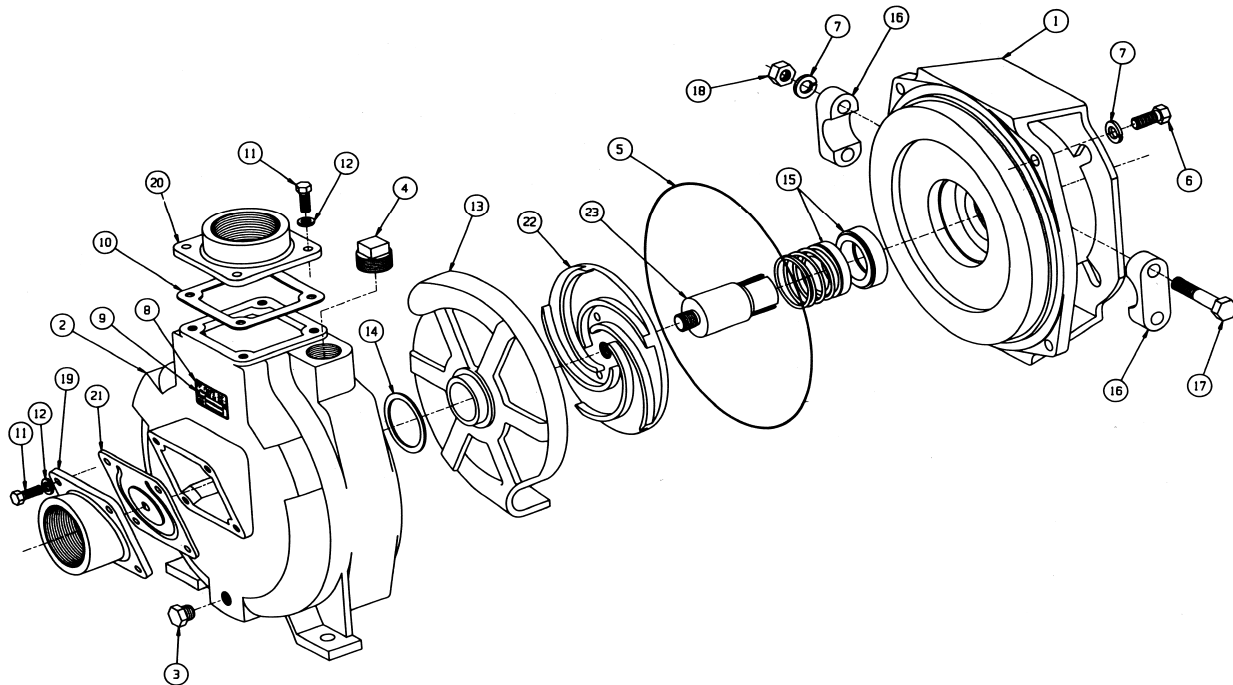


MP PUMPS SERVICE PARTS LIST

**Self Priming
Engine Mounting**

**Pedestal
Electric Motor**

**HHLF 1.5" x 1.5"
2.0" x 2.0"**



PART NO.	ITEM NO.	DESCRIPTION	QTY.	PART NO.	ITEM NO.	DESCRIPTION	QTY.
28824	1	Adaptor - 184TC	1	*23039	Assy	Clamp	1
29057	1	Bronze adaptor - 184TC	1	Included	7	Lockwasher SS 3/8"	2
29092	1	Adaptor Pedestal / Engine	1	Included	16	Clamp half	2
29093	1	Bronze adaptor Ped/Eng	1	Included	17	Capscrew SS 3/8" - 16	2
28818	2	Housing	1	Included	18	Hexnut SS 3/8"	2
29051	2	Bronze housing	1	22263	19	Flange Inlet 1 1/2"	1
21267	3	Pipe plug SS	1	22262	19	Bronze - Flange Inlet 1 1/2"	1
41483	4	Pipe Plug	1	22387	19	Flange Inlet 2"	1
22378	4	Bronze Pipe plug	1	22386	19	Bronze - Flange Inlet 2"	1
*28907	5	O-ring Viton	1	22266	20	Flange discharge 1 1/2"	1
21259	6	Capscrew SS 3/8" - 16	4	22310	20	Bronze - Flange Dis 1 1/2"	1
21266	7	Lockwasher SS 3/8"	4	22311	20	Flange Discharge 2"	1
	8	Nameplate		22310	20	Bronze - Flange Dis 2"	1
	9	Fastner - nameplate		*23022	21	Flapper assembly - Buna	1
*22256	10	Gasket - outlet flange, Buna	1	*26097	21	Flapper assembly - EPDM	1
21242	11	Capscrew SS -5/16" -18	8	34194	22	Impeller 6.7" cast iron	1
21238	12	Lockwasher SS 5/16"	8	28822	22	Impeller 6.5" cast iron	1
31988	13	Volute	1	34195	22	Bronze - Impeller 6.7"	1
33453	13	Bronze volute	1	29055	22	Bronze - Impeller 6.5"	1
*28908	14	Gasket - Viton	1	*28826	23	Drive sleeve - SS 184TC	1
*29533	15	Seal - Carbon/ceramic/Viton	1	*28825	23	Drive sleeve - SS PED/ENG	1

*- RECOMMENDED REPLACEMENT PARTS



MP PUMPS, INC.

34800 BENNETT • FRASER, MI 48026-1686
(586) 293-8240 • FAX (586) 293-8469
(800) 563-8006 • www.mppumps.com

Form 3041-B

Rev. 04/04