



HIGH PERFORMANCE 'S' SERIES SELF-PRIMING CENTRIFUGAL PUMP

BULLETIN
PAP-160B
MAY 2007

**2", 6.0HP, OHV ENGINE FOR MAXIMUM PERFORMANCE, MAXIMUM
VALUE AND UNSURPASSED PACER® RELIABILITY**

Pump:

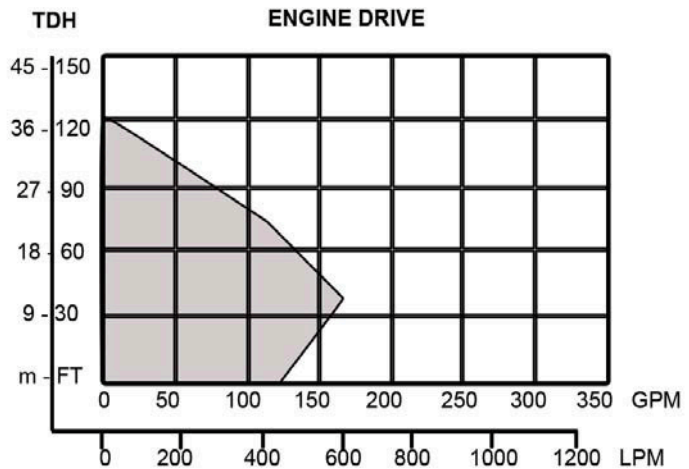
- Corrosion resistant polyester for use with Nitrogen, Roundup, Atrazine and many other chemicals.
- Stainless Steel internal fasteners and EPDM elastomers
- Pump end is molded and assembled in the United States
- Fast suction lifts to 25 feet.
- Pacer's No. 704 impeller ensures the performance you've come to expect from a Pacer®
- Maximum shut off pressure 52 psi for increased pumping distance and sprinkler head applications.
- Maximum flow rate of 160 gpm for quick transfers

NEW & IMPROVED PAC 160!



Engine:

- LCT MAXX Series overhead valve engine provides the power you need for maximum pumping performance
- Cast iron cylinder sleeve
- Low oil shut-off for extra engine protection
- Electronic Ignition
- 3 quart fuel tank
- 1 Year warranty
- EPA and CARB COMPLIANT



PUMP SPECIFICATIONS

CURVE	MODEL	PORT SIZE	MAX. FLOW	MAX.TDH	WEIGHT	UPC-A CODE
P	SEB2PL E5.5	2" NPT	160 GPM	120 FT. (52PSI)	50 LBS.	095616 820463

Available from: Lancaster, PA, Peru, IL, Amarillo, TX, Reno, NV



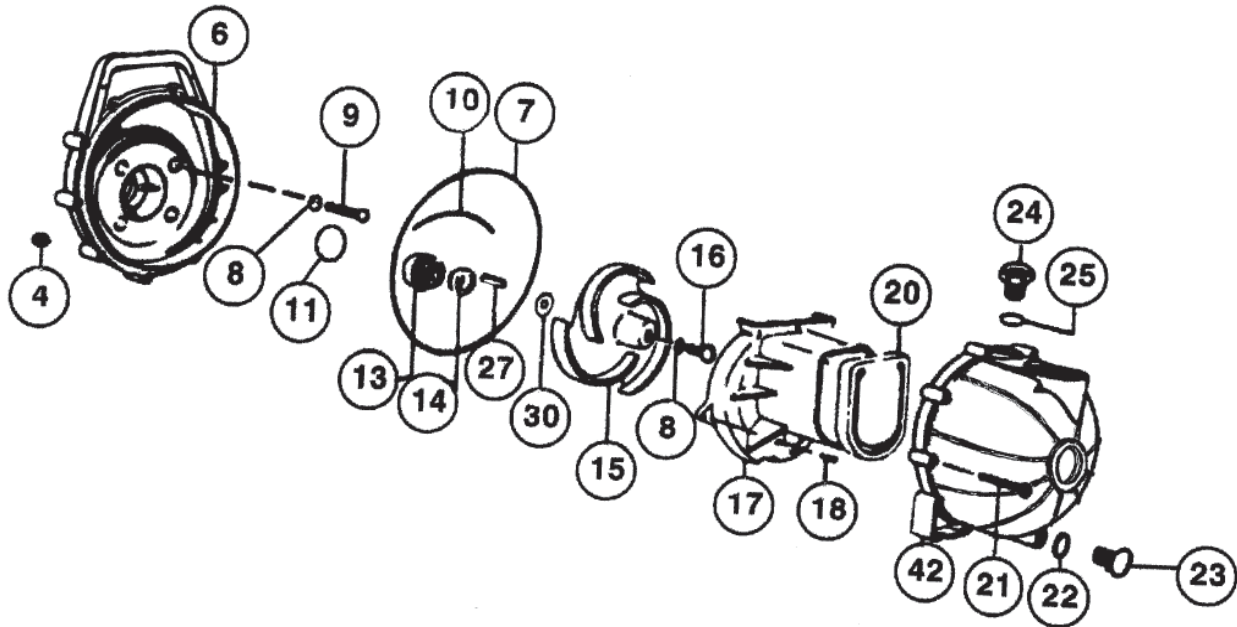
41 Industrial Circle
Lancaster, PA 17601-5927 U.S.A.
Email: sales@pacerpumps.com
www.pacerpumps.com

717-656-2161
800-233-3861
FAX: 717-656-0477

CARING FOR PACER PUMPS:

When handling agricultural fertilizer and chemicals, flush pump with fresh clean water immediately after use. Before storing pump, flush with fresh clean water and drain completely.

EPDM rubber components are not compatible with petroleum products. Do not use petroleum products when preparing pump for storage.



REF. NO.	DESCRIPTION	QUANTITY / PUMP	SEB2PL E5.5
4	Body nut	10	58-0721
6	Bracket	1	58-0703 30B
7	O-ring, body	1	58-0719 72
8	O-ring, screw	5	58-0717 72
9	Screw, bracket	4	58-0715 10
10	O-ring, segment	1	58-0754 72
11, 13 & 14	Shaft seal & O-ring	1	58-0714 12
15	Impeller	1	58-0704 30
16	Screw, impeller	1	58-0716 10
17	Volute	1	58-0702 30
18	Screw, side volute	As Required	58-0725 10
20	Check valve	1	58-0705 72
21	Screw, body	10	58-1206
22	O-ring, drain plug	1	58-1009 72
23	Plug, drain	1	58-0723 30
24	Plug, filler	1	58-0722 30B
25	O-ring, filler plug	1	58-0765 72
27	Key	1	58-0718 30
30	Shim	As Required	58-0778 11 (.006") 58-0778 12 (.015") 58-0778 13 (.030")
42	Body	1	58-1002 30B