



INSTALLATION INSTRUCTIONS FOR PART 99-7349B

APPLICATIONS

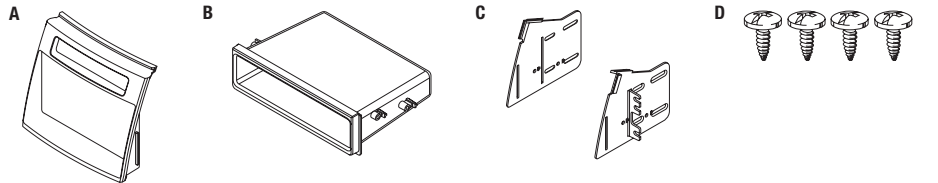
Kia Soul 2012-2013 99-7349B

KIT FEATURES

- DIN radio provision with pocket
- **Painted matte black**

KIT COMPONENTS

- A) Radio trim panel • B) Pocket • C) Brackets • D) (4) #8 x 3/8" Phillips screws



WIRING & ANTENNA CONNECTIONS (sold separately)

Wiring Harness: • 70-7304 - Kia/Hyundai harness 2010-up • HYKIA-01 - Hyundai/Kia amplified system interface

Antenna Adapter: • Not required

TOOLS REQUIRED

- Panel removal tool • Phillips screwdriver • Small flat blade screwdriver



Table of Contents

Dash Disassembly

- Kia Soul 2012-2013..... 2

Kit Assembly

- DIN radio provision with pocket..... 3

CAUTION: Metra recommends disconnecting the negative battery terminal before beginning any installation. All accessories, switches, and especially air bag indicator lights must be plugged in before reconnecting the battery or cycling the ignition.

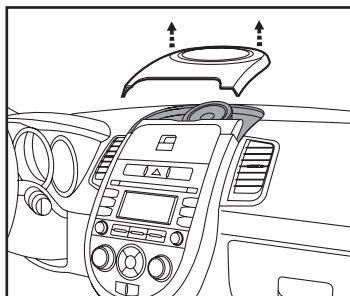
NOTE: Refer to the instructions included with the aftermarket radio.



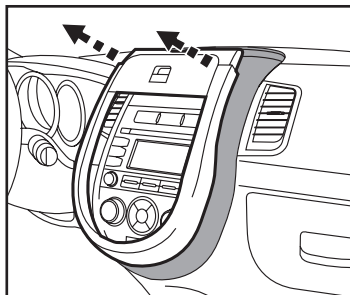
99-7349B

Dash Disassembly

1. Unclip and remove the panel (and speaker if equipped) from above the radio panel. (Figure A)
2. Unclip and remove the radio/ climate control trim panel. (Figure B)



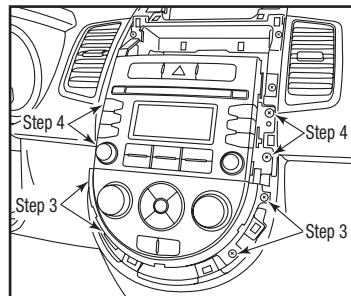
(Figure A)



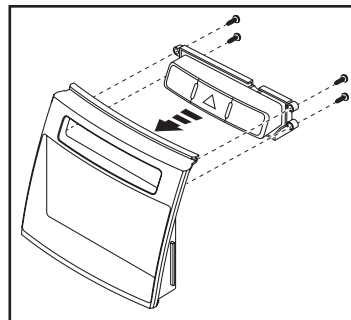
(Figure B)

3. Remove (4) Phillips screws to remove the climate control. (Figure C)
4. Remove (4) Phillips screws to remove the radio. (Figure C)
5. Remove the hazard switch assembly from the radio and mount it to the 7349 panel with the factory hardware. (Figure D)

Continue to kit assembly



(Figure C)



(Figure D)

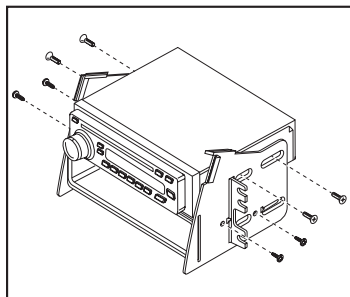


99-7349B

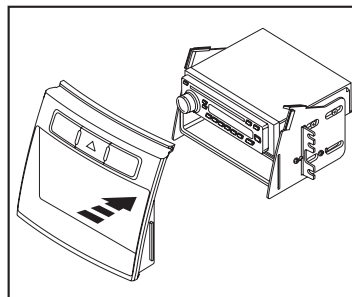
Kit Assembly

DIN radio provision with pocket

1. Attach the pocket to the brackets using the supplied screws. (Figure A)
2. Attach the radio to the brackets using the ISO screws supplied with the radio. (Figure A)
3. Clip the Radio Trim Panel over the radio/ pocket/ bracket assembly. (Figure B)
4. Locate the factory wiring harness in the dash. Metra recommends using the proper mating adapter from Metra or AXCESS. Re-connect the negative battery terminal and test the unit for proper operation.
5. Reassemble dash in reverse order of disassembly.



(Figure A)



(Figure B)



INSTALLATION INSTRUCTIONS FOR PART 99-7349B

REV 12/9/2013 INST99-7349B



KNOWLEDGE IS POWER

Enhance your installation and fabrication skills by enrolling in the most recognized and respected mobile electronics school in our industry. Log onto www.installerinstitute.com or call 800-354-6782 for more information and take steps toward a better tomorrow.



**Metra recommends MECP
certified technicians**