

# Office Panel Installation Instructions

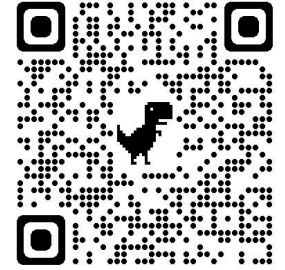
Questions? Call Customer Service at 1-800-443-5117, 8:30-5 Central Time, Mon-Fri

Tools Needed: Phillips Screwdriver, Rubber Mallet, WD-40 and Clean Hands! Hardware Included: Each Panel includes Mounting Brackets. End Strips provided for end of panel runs.

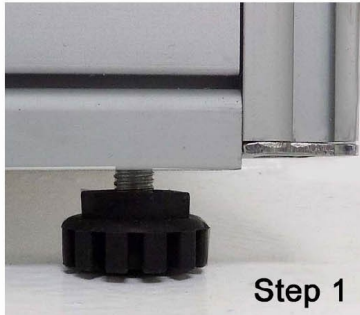
## Important Assembly Tips:

- \* If needed, use of a lubricant such as WD-40 in the side track may ease the process of removing and replacing mounting brackets, as well as sliding in end strips if an overly tight fit. Be careful not to overspray lubricant onto the panel.
- \* Mounting brackets should only be very loosely attached. The pointed Phillips set screw attached to the brackets is merely for bracket positioning. Leaving the brackets as loose as possible will allow the connections to fit together properly.
- \* When installing an arrangement of panels, installation will be easier if the brackets of the first panel have the opening facing upward (see diagram below). This way, the next panel bracket drops into the receiving bracket, rather than having to lift the first panel off the floor for the connection.

Assembly Video



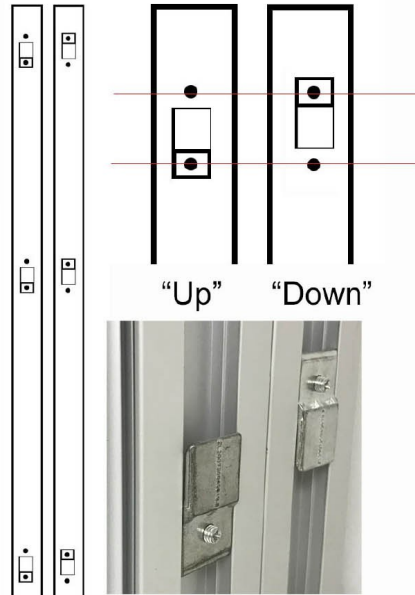
Step 1) Screw in two leveling glides into the base of each panel.



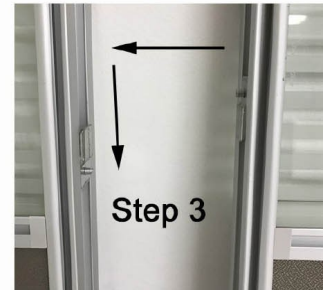
Step 2) Insert Clips into tracks. On first panel, arrange the Clips into the "UP" position in the track. (see drawing on right.) On next connecting panel, arrange the Clips in the "DOWN" position. Repeat on each panel as needed.

48"H Panels & Posts: 3 Clips in each track  
67"H Panels & Posts: 3 Clips in each track  
84"H Panels & Posts: 5 Clips in each track

Step 2



Step 3) Slide your second panel into your first panel by slightly tipping the second panel and dropping the brackets down into the first panel. Brackets will fit together. Repeat Steps 1 & 2 as needed.



Step 4) Connector Posts will need 3 mounting brackets per side/connection and attach in same method as panels.

See video above!!!!

Step 5) Use the plastic end strips at the end of each panel run for a finished appearance. Do not add any mounting brackets in the rails when using the end strips.

Step 6) Cable troughs can be opened by inserting a straight blade screwdriver into the side or top edge to pop the door open.