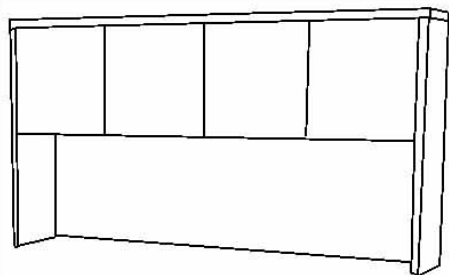









Modern Office
6900 Shady Oak Road, Ste 120
Eden Prairie, MN 55344
Phone: 800.443.5117
(In MN): 952-941-2837
Fax: 952.949.9816
www.modernofficefurniture.com

Y9434 Franklin Dark Cherry Veneer Hutch
Hutch for Y9436 Franklin 4-Piece Office Set
Hutch for Y9439 & Y9440 Franklin U-Desk with Hutch



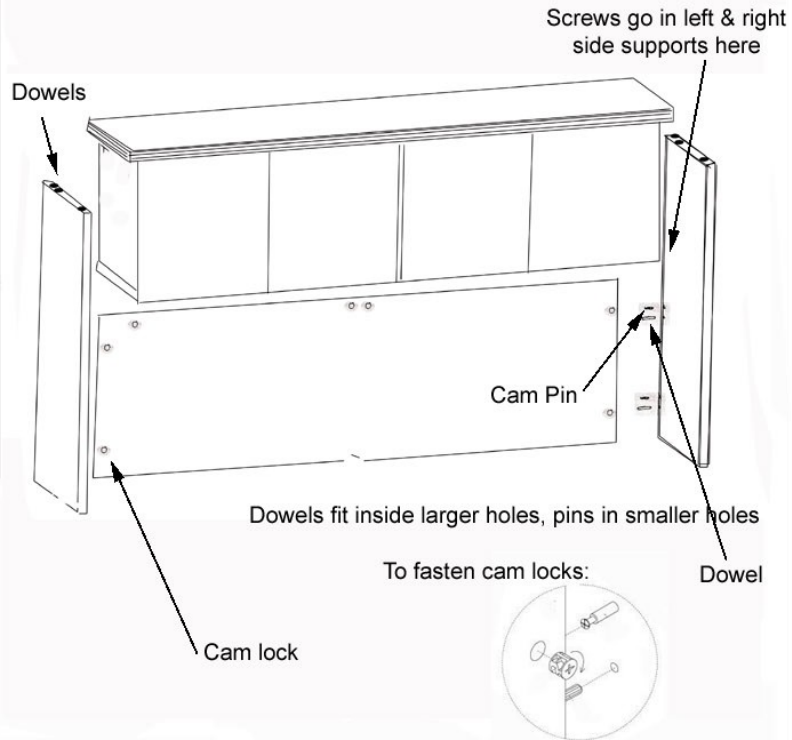
ASSEMBLY INSTRUCTIONS

PARTS LIST

Part	Part
 Wood Dowel	 Cap
 Cam Pin	 Cam Lock
 Screw	

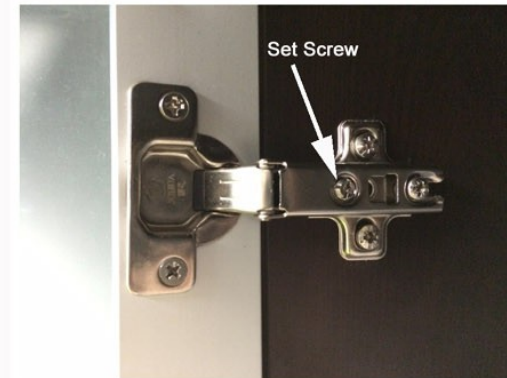
1.) Assemble on a smooth, carpeted floor to prevent scratches or damage. Assembly will require 2 people for safety.

2.) Cabinet of hutch is preassembled. You will need to attach the side supports and back panel using the cam locks, cam pins, dowels and screws as shown.



2

3.) You may need to align the hutch doors. You can do this by adjusting the set screw on the hinge. It also may help to loosen the other screws to help manipulate the hinges.



3