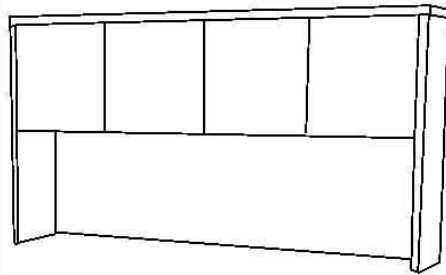


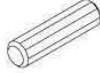



## 4-Door Hutch

1017-CHV (Cherry) or 1017-MHV (Mahogany)



# ASSEMBLY INSTRUCTIONS

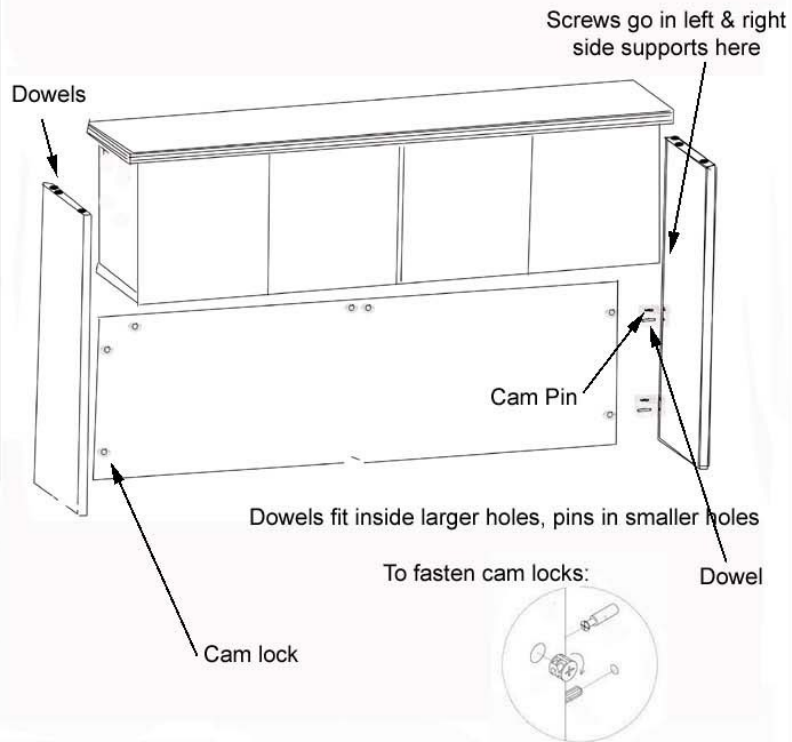
## PARTS LIST

Part	Part
 Wood Dowel	 Cap
 Cam Pin	 Cam Lock
 Screw	

**Note:**

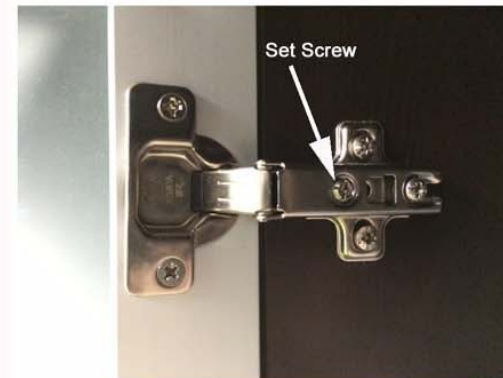
Some of the holes may be covered with veneer. Use your finger, pen or tip of Phillips screwdriver to poke through.

- 1.) Assemble on a smooth, carpeted floor to prevent scratches or damage. Assembly will require 2 people for safety.
- 2.) Cabinet of hutch is preassembled. You will need to attach the side supports and back panel using the cam locks, cam pins, dowels and screws as shown.



**2**

- 3.) You may need to align the hutch doors. You can do this by adjusting the set screw on the hinge. It also may help to loosen the other screws to help manipulate the hinges.



**3**