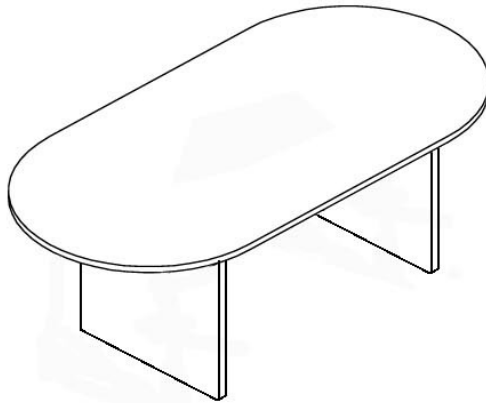




Modern Office
6900 Shady Oak Road, Ste 120
Eden Prairie, MN 55344
Phone: 800.443.5117
(In MN): 952.941.2837
Fax: 952.949.9816
www.modernofficefurniture.com

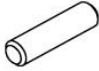





Conference Table (1-piece table top)

MJ/FL/ML/GL2035



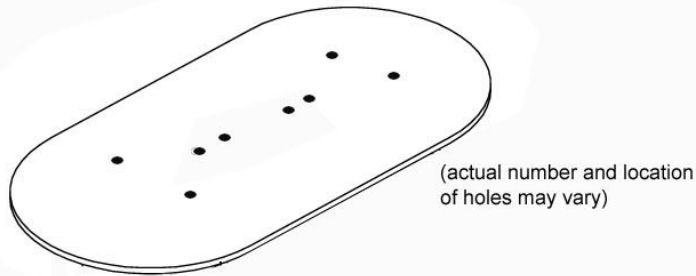
Assembly Instructions

PARTS LIST

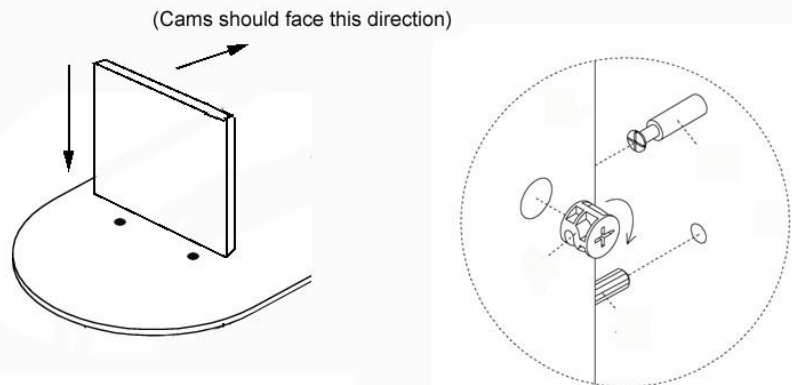
Part	Part
 Wooden Dowel	 Deep Cover
 Cam Lock	 Shallow Cover
 Cam Pin	
 Shallow Cover	

1.) Start by laying table top face down on carpet or on the cardboard box for protection during assembly. (Hint: Assemble near the place of use to avoid moving the assembled table)

2.) Insert all of the hardware for the bases and table support in the holes in the table top. Large holes are for the wooden dowels and the small holes are for the cam pins.



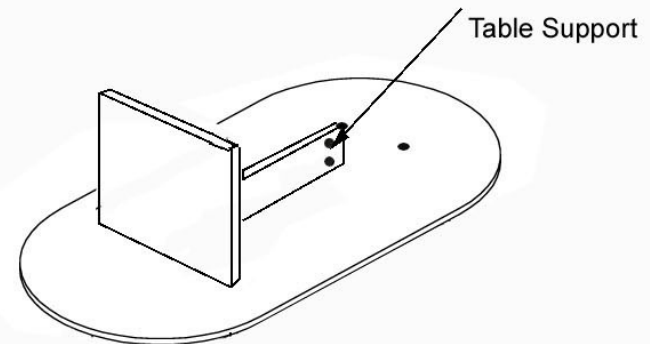
3.) Attach your first base. First, insert any cam locks in the base. Align the holes at the top of the base over the cam pins and dowels. Set base down over holes. To secure, twist cam lock with a Phillips Screwdriver like shown in the diagram.



4.) Insert the wooden dowels and cam pins into the base for the table support, which is what you will attach next.

5.) Insert all cam locks into the table support.

6.) Now, attach table support by centering the holes in the edge of the support over the pins and dowels on the base. Secure by twisting cam locks.



7.) Next, insert all dowels, cam locks and cam pins into the 2nd base and attach base to support and table top, like explained in steps 3 and 6.

8.) Attach all 4 leveling glides to the bases.

9.) Now, with a 2nd person, carefully turn the table upright, supporting the bases as the table is turned.

10.) Once table is in position, snap in the shallow & deep covers over the cam locks. Shallow covers will fit over the cams in the table support, deep covers will fit in the cams in the bases.

