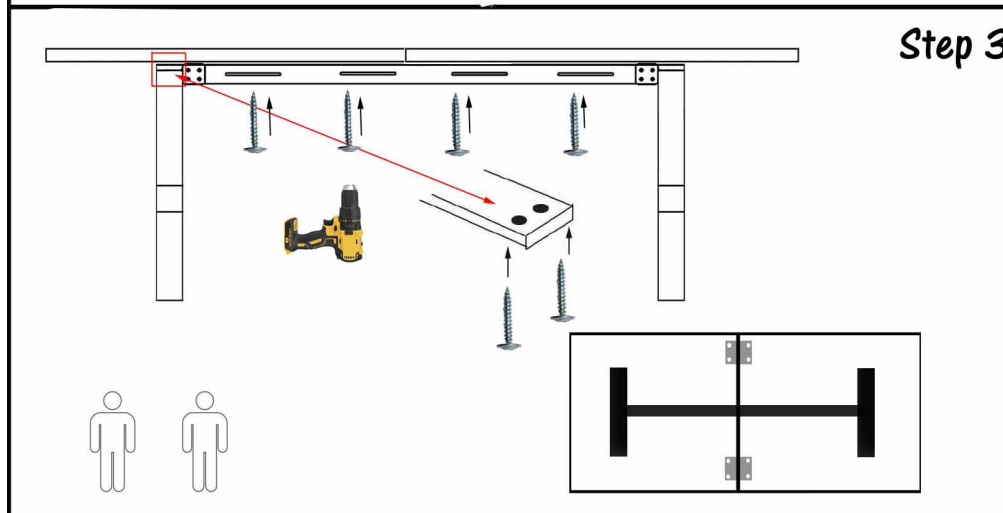
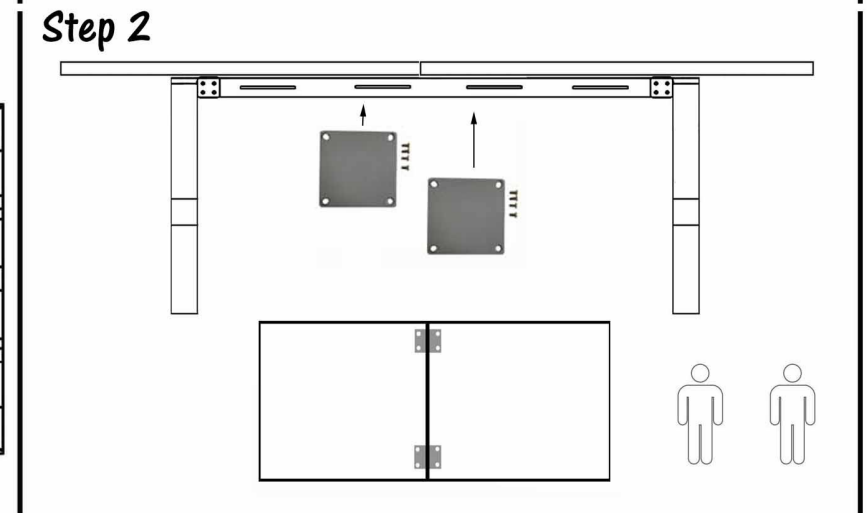
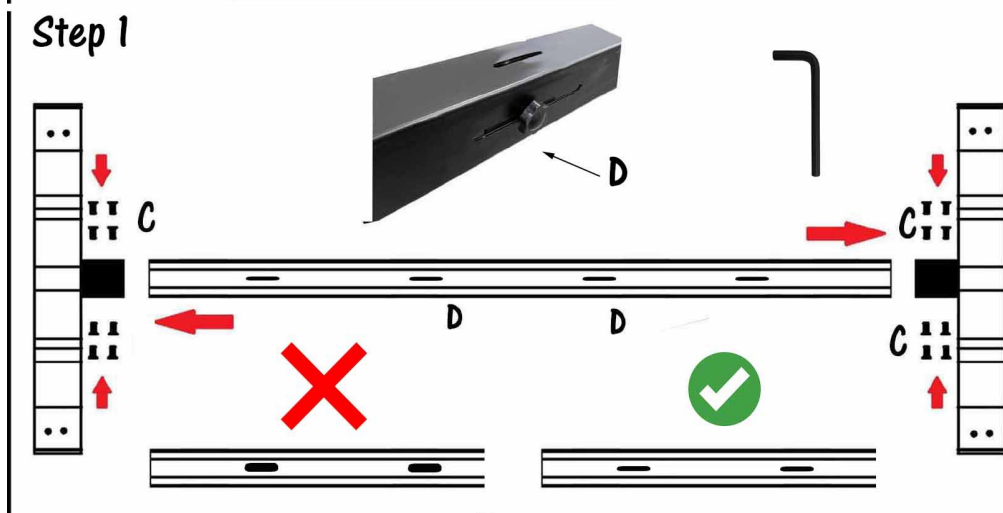
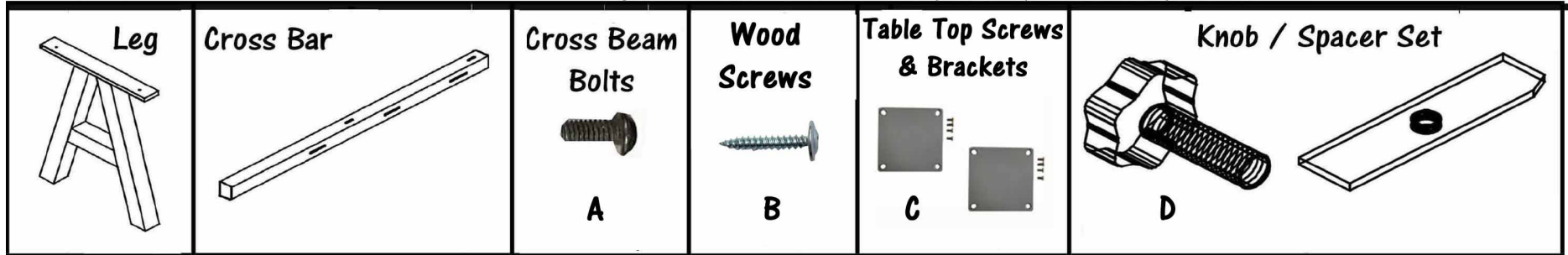


A-Frame Conference Table Instructions

(Oval, Boat-Shaped and Rectangular Tops)

Questions? Call Cust. Svc. at 1-800-443-5117, Mon-Fri, 8:30 - 5 CT



Size	Qty Legs	Qty Beams	Qty A	Qty B	Qty C (Sets)	Qty D (Sets)
8'x4'	2	1	16	20	1	1
10'x4'	2	1	16	20	2	1
11'x4'	2	1	16	20	2	1
12'x4'	2	1	16	20	2	1
16'x4'	4	2	32	40	3	2

Tools Needed:

- Allen Wrench (included)
- Power Screwdriver/Drill
- A Helper

A-Frame Conference Table Instructions (Oval, Boat-Shaped and Rectangular Tops)

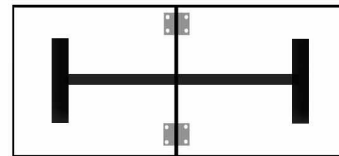
Questions? Call Cust. Svc. at 1-800-443-5117, Mon-Fri, 8:30 - 5 CT

Preparation: Assemble in the area you plan to use. Use a carpeted area or cardboard to help protect the pieces during assembly. 2 people are required for assembly of this item.

Step 1) Start by assembling the frame. Attach the Cross Bar to the Legs with the (A) Bolts and Allen Wrench. Once assembled, use the diagram on the right to determine the length you need to set the frame at. The Cross Bar can slide in and out for this step. Once you have the proper length set, install (D) Bracket/Knob Set. **IMPORTANT: ASSEMBLE CROSS BEAM WITH SMALLER SLOTS FACE UP TOWARDS TABLE TOPS. LARGER SLOTS NEED TO FACE THE FLOOR FOR EASE OF INSTALL!!!**

Step 2) With a helper, carefully center and place the table tops on the frame. Install the (C) Brackets & Screws found in a package labeled 'METALPLATES4747'. The brackets will align over predrilled inserts that will allow the bracket to be placed over the seam. Have one person hold the tops steady while the other person uses a power screwdriver to drill the machine screws through the brackets and into the table top.

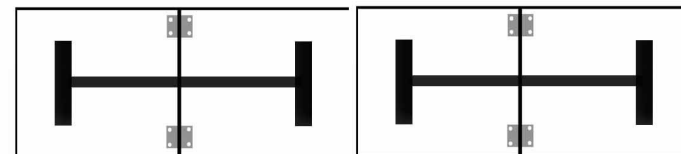
Step 3) Attach the frame to the table tops using the (B) Wood Screws (found in package labeled AFR-CONFBL) and a power screwdriver. At the top of each leg, at each end are two holes. Install one screw per hole (a total of 8 for one table frame). Also, install one screw through each large slots at the underside of the table. Have a helper hold the tops steady while the other person drills.



- 8'x4' Recommend Frame Length = 72"



10'x4' , 11'x4' and 12'x4'
Recommended Frame
Length = 98"



16'x4'
Recommended
Frame Length =
Each Beam 72"