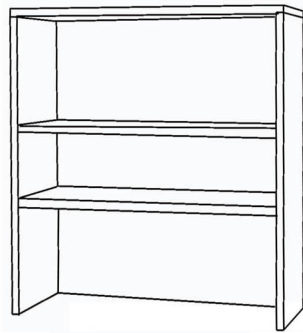


Bookcase Hutch Assembly Instructions



FL/MJ/ML/WH2050

List of Hardware:



1.) Screw in/insert all cam pins, cam locks and wood dowels in both side panels, fixed shelf and top surface.

2.) Assemble the unit on its side, on carpet or cardboard to protect it during assembly. Begin by attaching the Back Panel to one of the Side Panels. The cam pins and dowels should fit into the holes on the edge of the side panel. Use your screwdriver to twist the cam locks to secure the connection like shown in Figure 1.

3.) Next, attach the Fixed Shelf to the Side Panel and Back Panel using same method.

4.) Then, attach the opposite Side Panel to Fixed Shelf and Back Panel.

5.) Attach Top Surface.

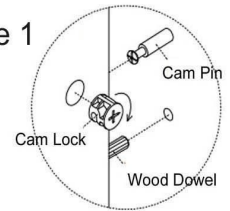
Tools Needed:

- Phillips Screwdriver
- A Helper

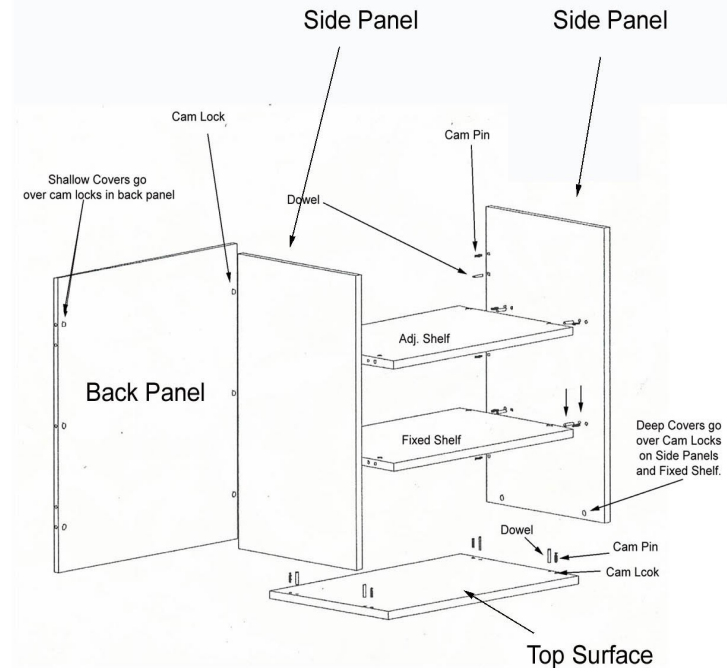
Special Note:

Location & number of cam pin, cam lock and dowel holes may vary.

Figure 1



Exploded diagram of parts



6.) With a helper, turn the unit upright. Double-sided tape is pre-applied to the bottom of the left and right side panels. To secure your unit to the file or cabinet that this will sit upon, peel off the backing and carefully set the unit on top. The tape will hold and secure the hutch.

7.) Insert the shelf pins into your desired position and set the Adjustable Shelf on top of the pins to mount.

8.) Insert shallow covers to cover the cam locks on the Back Panel and the deep covers to cover the cam locks on the Side Panels.

Questions? Please call 1-800-443-5117.

Customer Service available 8:30 - 5:00 Central Time, Monday - Friday