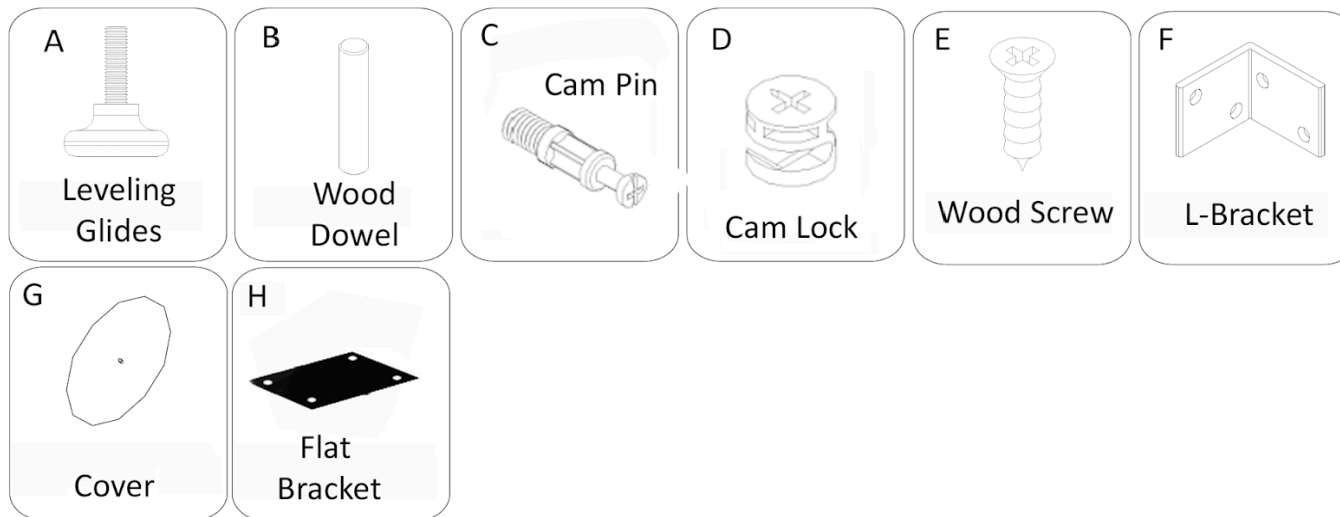


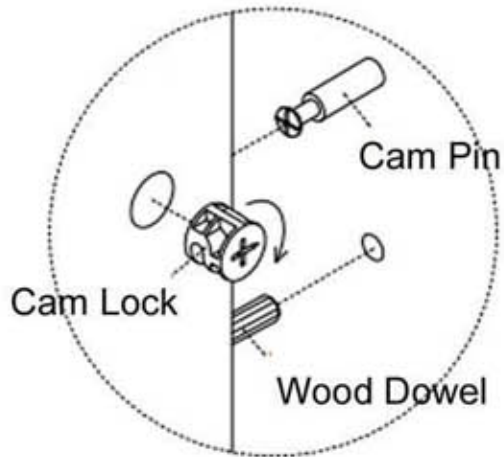
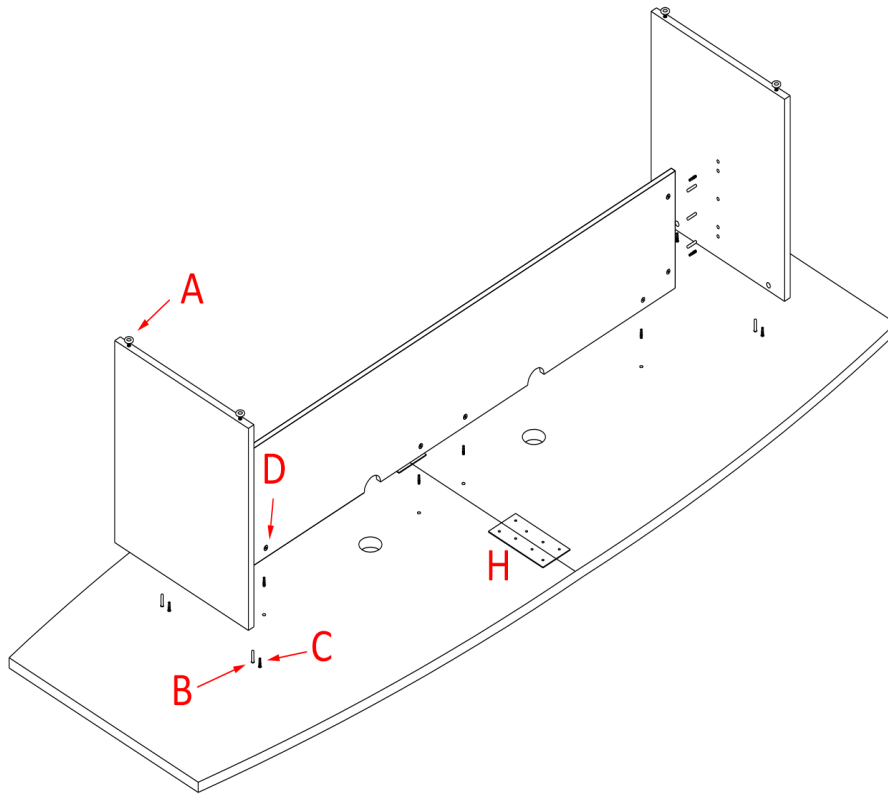


Boat-Shaped Conference Table Assembly Instructions



Questions? Call Customer Service at 1-800-443-5117 Mon-Fri, 8:30-5PM Central Time or email at CustomerSvc@ModernOfficeFurniture.com





- 1) Lay furniture on carpet or cardboard for protection during assembly. Attach (A) Leveling Glides to the bases.
- 2) Insert all (B) Dowels, (C) Cam Pins and (D) Cam Locks into the bases and support panel. Next, attach both table bases to the support panel. Using a screwdriver, turn the (D) Cam Locks like shown below to lock the (C) Cam Pins in place.
- 3) Next, lay the table tops face down and attach the (H) Brackets with the (E) Wood Screws. Then, insert all (B) Wooden Dowels and (C) Cam Pins into the table top.
- 4) With 2-People, each person holds a table leg and sets the table base assembly over (C) Cam Pins and (B) Dowels. Use (D) Cam Locks to lock into (C) Cam Pins.
- 5) Attach (F) L-brackets with (E) Wood Screws provided to secure legs and stretcher to underside of table top.
- 6) With a helper, carefully turn the table upright and set it in place. Add (G) decorative adhesives to cover the cam locks.
- 7) Lastly, add the grommets into the table tops surfaces.