



Toll Free: 1-800-443-5117
www.modernofficefurniture.com

Office Panel Installation Instructions

Questions? Call Customer Service at 1-800-443-5117, 8:30-5 Central Time, Mon-Fri

Tools Needed: Phillips Screwdriver, Rubber Mallet, WD-40 and Clean Hands! Hardware Included: Each Panel includes Mounting Brackets. End Strips provided for end of panel runs.

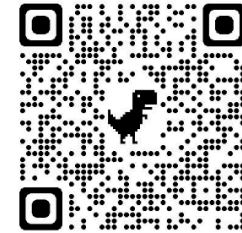
Important Assembly Tips:

* If needed, use of a lubricant such as WD-40 in the side track may ease the process of removing and replacing mounting brackets, as well as sliding in end strips if an overly tight fit. Be careful not to overspray lubricant onto the panel.

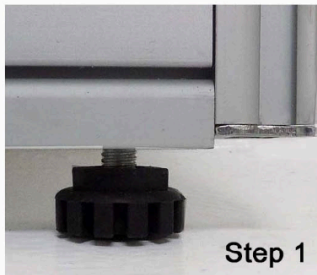
* Mounting brackets should only be very loosely attached. The pointed Phillips set screw attached to the brackets is merely for bracket positioning. Leaving the brackets as loose as possible will allow the connections to fit together properly.

* When installing an arrangement of panels, installation will be easier if the brackets of the first panel have the opening facing upward (see diagram below). This way, the next panel bracket drops into the receiving bracket, rather than having to lift the first panel off the floor for the connection.

Assembly Video



Step 1) Screw in two leveling glides into the base of each panel.

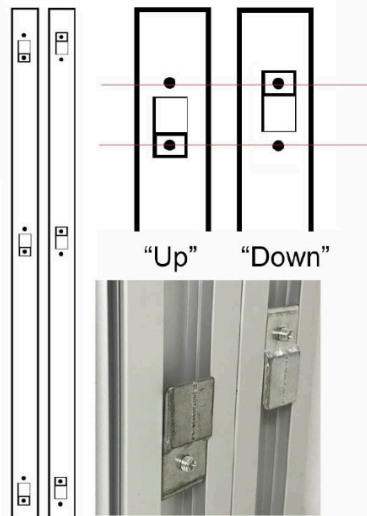


Step 1

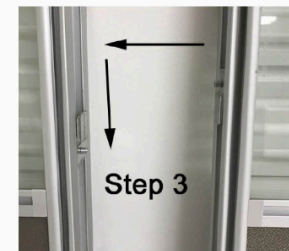
Step 2) Insert Clips into tracks. On first panel, arrange the Clips into the "UP" position in the track. (see drawing on right.) On next connecting panel, arrange the Clips in the "DOWN" position. Repeat on each panel as needed.

48"H Panels & Posts: 3 Clips in each track
67"H Panels & Posts: 3 Clips in each track
84"H Panels & Posts: 5 Clips in each track

Step 2



Step 3) Slide your second panel into your first panel by slightly tipping the second panel and dropping the brackets down into the first panel. Brackets will fit together. Repeat Steps 1 & 2 as needed.



Step 3

Step 4) Connector Posts will need 3 mounting brackets per side/connection and attach in same method as panels.

See video above!!!!

Step 5) Use the plastic end strips at the end of each panel run for a finished appearance. Do not add any mounting brackets in the rails when using the end strips.

Step 6) Cable troughs can be opened by inserting a straight blade screwdriver into the side or top edge to pop the door open.



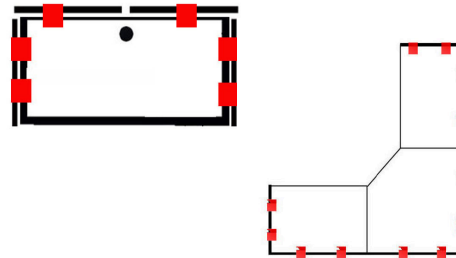
Cubicle Worksurface Assembly Instructions

This guide explains how to mount the desk tops once your panels have been set up. Applies to any carrel or cubicle with panel mounted surfaces.

Questions? Need Help? Please call Customer Service at 1-800-443-5117, Monday through Friday, 8:30-5 Central Time.

Step 1) Once the panel walls of your cubicle have been assembled and are freestanding, locate the gold-colored brackets and wood screws. Quantities of brackets and screws will vary depending on the size and style of workstation. Each bracket will have two wood screws. Each bracket will fit into the track of the panel as shown on the right.

To the right are two diagrams for bracket placement.

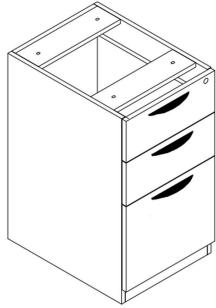


Step 2) After you have added all of your brackets into the tracks, set your first worksurface on top of the brackets. Install two wood screws per L-bracket, into the underside of the worksurface like shown on the left. Repeat this step until all brackets are screwed in. You are making your own holes with the self-drilling wood screws provided.

Step 3) (for multi-surface cubicles). Install worksurface-to-worksurface brackets as shown on right using the wood screws provided. Then insert grommet covers into each worksurface.



Step 4) (for cubicles that include file pedestals).

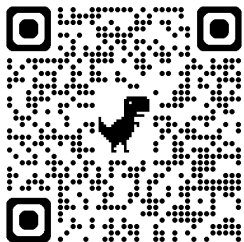


- A) Screw in the four leveling glides by hand.
- B) Attach the drawer pulls
- C) To install under the worksurface, pull out the top two box drawers. In the left and right slides are black finger-like tabs. Push one tab up on one side, while pushing down on the tab on the other side. This will release the drawer from the tracks.
- D) Use the 4 machine bolts provided to screw the top braces of the file pedestal to the inserts on the underside of the worksurface(s).
- E) Insert the box drawers back into their tracks. They will snap into place.

These assembly instructions apply to:



Assembly Video QR Code:



Questions? Need Help? Please call Customer Service at 1-800-443-5117, Monday through Friday, 8:30-5 Central Time.