

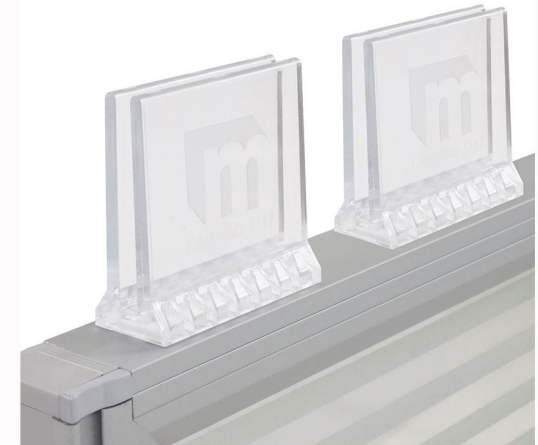


Universal Polycarbonate Sneeze Guard Clamps Installation Instructions

Each includes:

Polycarbonate Clamps
Alcohol Wipes
Strips Double Sided Tape

For use on hard,
non-porous, clean surfaces



- 1.) Our universal clamps are designed to adhere to any smooth, nonporous surface. Begin by thoroughly cleaning surface with alcohol wipes provided.
- 2.) After surface is completely dry, remove backing from tape strip and adhere to underside of clamp. Next remove backing from other side of tape strip.
- 3.) Confirm positioning of clamp before adhering to surface. Once stuck down clamp should not be removed as tape may lose grip strength.
- 4.) Firmly press clamp into position.

*****IMPORTANT*****

**For proper connection allow clamp/tape to dry for 8 hours.
The tape needs this time to properly set for a firm and permanent connection.**

* Removal. Brackets can be removed in the future with the use of a flat razor blade.
Caution must be used not to scratch surface.

Questions? Call Customer Service at 1-800-443-5117, Monday - Friday 8:30 AM to 5:00 PM Central Time
www.modernofficefurniture.com