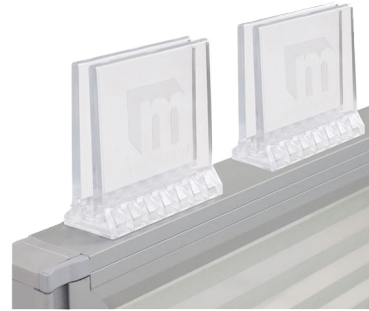


# Universal Polycarbonate Privacy Panel / Safety Shield / Sign Holder Clamps Install Guide



- 1) Make sure surface is clean and free of dust
- 2) Confirm positioning of clamp before adhering to surface.
- 3) Adhesive tape has been pre-applied to your clamp. Peel off backing and press clamp down.

To remove: use a flat razor blade, with caution.