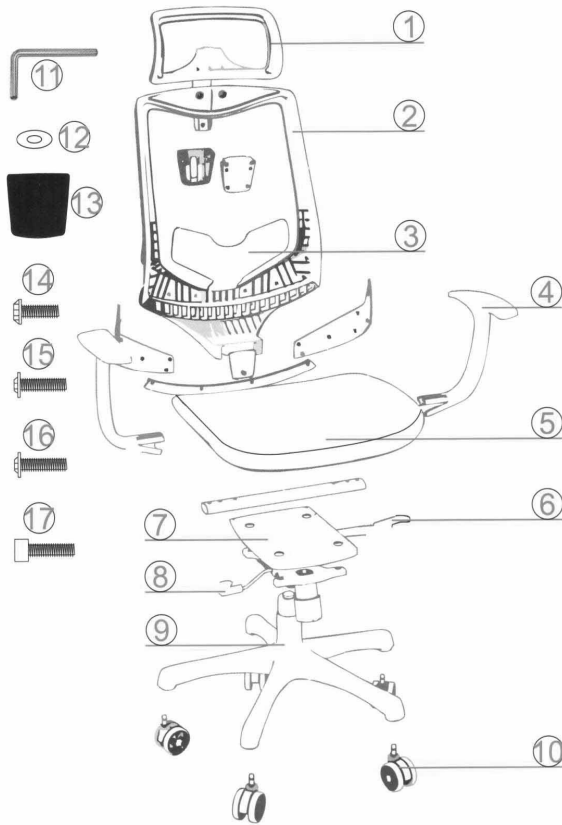


## Y13361 - Mesh Chair Assembly Instructions



### PARTS LIST

1. Headrest
2. Back cushion
3. Lumbar support
4. Armrest
5. Seat cushion
6. Back cushion adjust handle
7. Seat plate
8. Height adjust handle
9. Star base
10. Caster (5pcs)
11. M5 Allen key
12. Screw gasket M6x0.62 inch(4PCS),  
M6x0.47 inch (6PCS)
13. Back screw lid
14. Screw bolt M8x0.78inch(3PCS)
15. Screw bolt M6x0.78inch(4PCS)
16. Screw bolt M6x1.37inch(6PCS)
17. Screw bolt M6x1.37inch(2PCS)

### SPECIFICATIONS

Chair weight: 27.7 lbs  
 Load capacity: 275 lbs  
 Size: 22.8x24.8x48.8 inches  
 Product material: PA, PU, glass fiber, Aluminium alloy

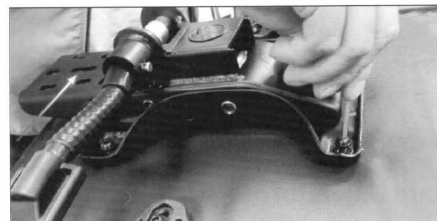
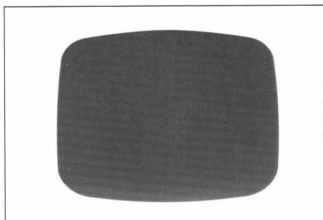
### PACKAGE INCLUDES

1x office chair (divided parts)  
 1x wrench  
 15x screw sets

### INSTALLATION

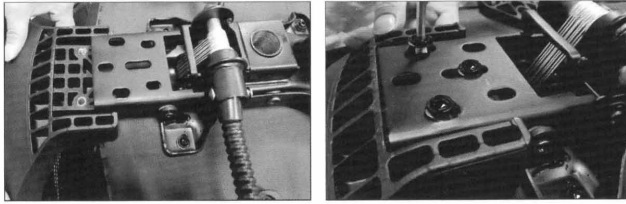
1. Install the armrest on seat. Make sure to install at the right direction. For the seat cushion, the broad edge is the front, and the narrow edge is the back. The armrest with an "L" on the bottom is for the left side and "R" for the right side of the seat. The screw bolt should be the M6x1.37inch(6pcs) with a gasket(6pcs).

2. Install the seat plate. The part with screw holes should be installed towards the back of the seat cushion. Use the screw bolt M6x0.78inch(4pcs) with a gasket(4pcs).

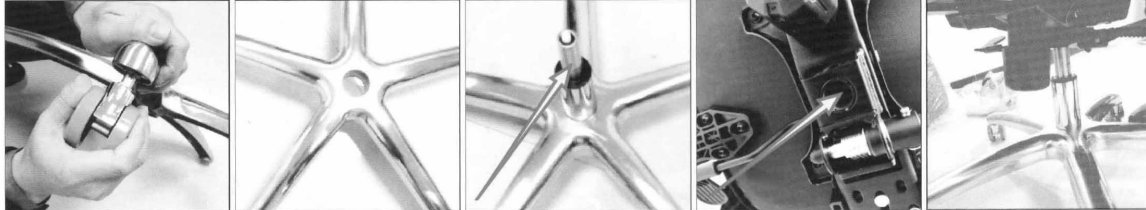


Questions? Please call 1-800-443-5117.  
 Customer Service available 8:30 - 5:00 Central Time, Monday - Friday

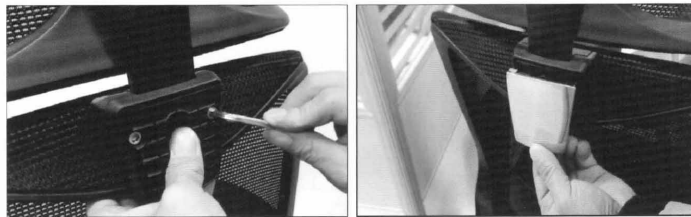
3. Insert the backrest bottom into the slot of the seat plate, use the screw bolt M8x0.78inch(3pcs) to fix.



4. Insert the 5 casters into the alloy base, insert the gas lift into the hole on top of the alloy base, insert the top of the gas lift into the hole on the seat plate.

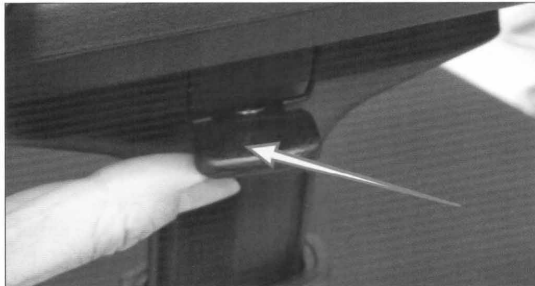


5. Use the screw bolt M6x1.37inch(2pcs) to fix the headrest onto the backrest then insert the screw slot cover.



### OPERATION INSTRUCTION

1. Press the button to adjust height of the armrest, loose the button to fix the position



2. Push the headrest to front and back to adjust the angle, lift or press the headrest to adjust the height.



3. Lift the left button to adjust the angle of backrest and release to lock.



4. Lift the right button to adjust the height of chair and release to lock.



Questions? Please call 1-800-443-5117.  
Customer Service available 8:30 - 5:00 Central Time, Monday - Friday