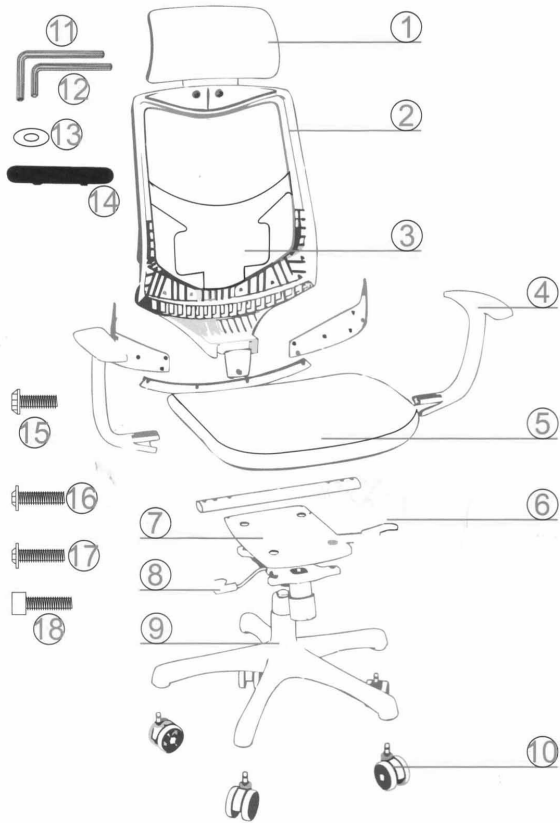


## Y13362 - Mesh Chair Assembly Instructions



### PARTS LIST

1. Headrest
2. Back cushion
3. Lumbar support
4. Armrest
5. Seat cushion
6. Back cushion adjust handle
7. Seat plate
8. Height adjust handle
9. Star base
10. Caster (5pcs)
11. M5 Allen key
12. M4 Allen key
13. Screw gasket M6x0.62inch(10PCS)
14. Back screw lid
15. Screw bolt M8x1.37inch(3PCS)
16. Screw bolt M6x1.18inch(4PCS)
17. Screw bolt M6x1.77inch(6PCS)
18. Screw bolt M6x0.78inch(2PCS)

### SPECIFICATIONS

Chair weight: 31.3 lbs  
 Load capacity: 275 lbs  
 Size: 22.8x24.4x50.5 inches  
 Product material: PA, PU, glass fiber, Aluminium alloy

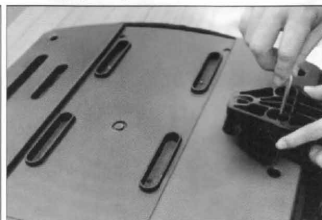
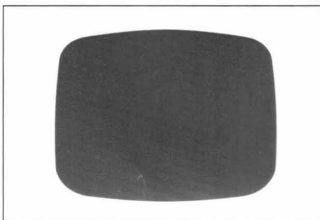
### PACKAGE INCLUDES

1x office chair (divided parts)  
 2x wrench  
 15x screw sets

### INSTALLATION

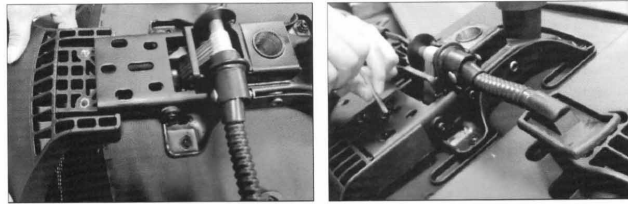
1. Install the armrest on seat. Make sure to install at the right direction. For the seat cushion, the broad edge is the front, and the narrow edge is the back. The armrest with an "L" on the bottom is for the left side and "R" for the right side of the seat. The screw bolt should be the M6x1.77inch(6pcs) with a gasket(6pcs).

2. Install the seat plate with screw holes on the back of the seat cushion. Use the screw bolt M6x1.18inch(4pcs) with a gasket(4pcs).

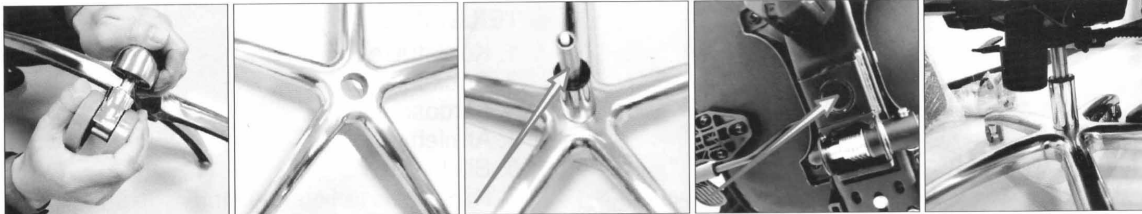


Questions? Please call 1-800-443-5117.  
 Customer Service available 8:30 - 5:00 Central Time, Monday - Friday

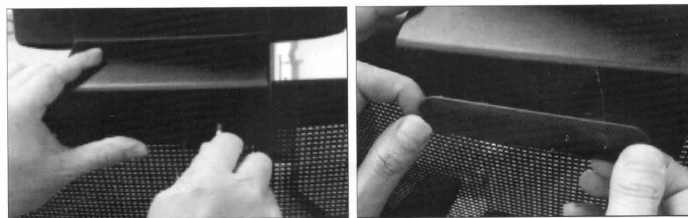
3. Insert the backrest bottom into the slot of the seat plate, use the screw bolt M8x1.37inch(3pcs) to fix.



4. Insert the 5 casters into the alloy base, insert the gas lift into the hole on top of the alloy base, insert the top of the gas lift into the hole on the seat plate.



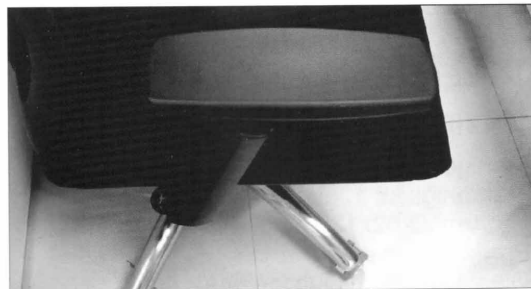
5. Use the screw bolt M6x0.78inch(2pcs) to fix the headrest onto the backrest then insert the screw slot cover.



### OPERATION INSTRUCTION

1. Press the button to adjust the height of armrest, loose the button to fix the position

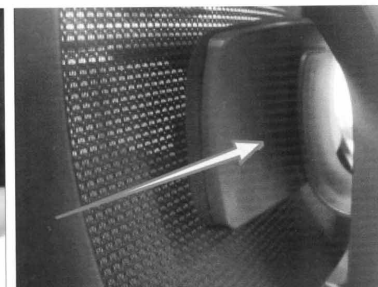
2. Hold the armrest you can move it to front/back/left/right.



3. Lift the left button to adjust the angle of backrest and release to lock.

4. Lift the right button to adjust the height of chair and release to lock.

5. Lift and push to adjust the lumbar support.



Questions? Please call 1-800-443-5117.  
Customer Service available 8:30 - 5:00 Central Time, Monday - Friday