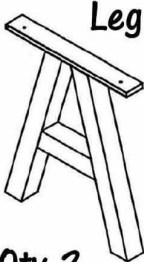
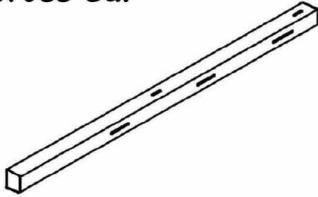



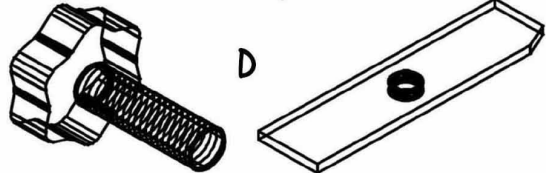
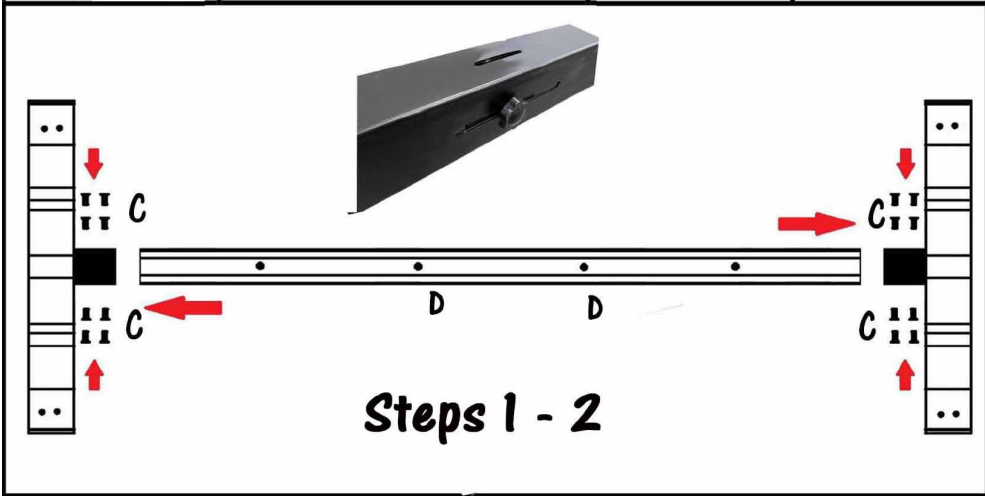


A-Frame Series Desk Assembly Instructions

Questions: Call 1-800-443-5117, 8:30-5, Central Time, Mon-Fri

 <p>Leg</p> <p>Qty 2</p>	 <p>Cross Bar</p> <p>Qty 1</p>	 <p>Wood Screw A</p> <p>Qty 4</p>	 <p>Top to Leg Bolts B</p> <p>Qty 4</p>	 <p>Cross Beam Bolts C</p> <p>Qty 16</p>	 <p>Knob / Spacer Set D</p> <p>Qty 2 Sets</p>
--	--	---	--	--	---

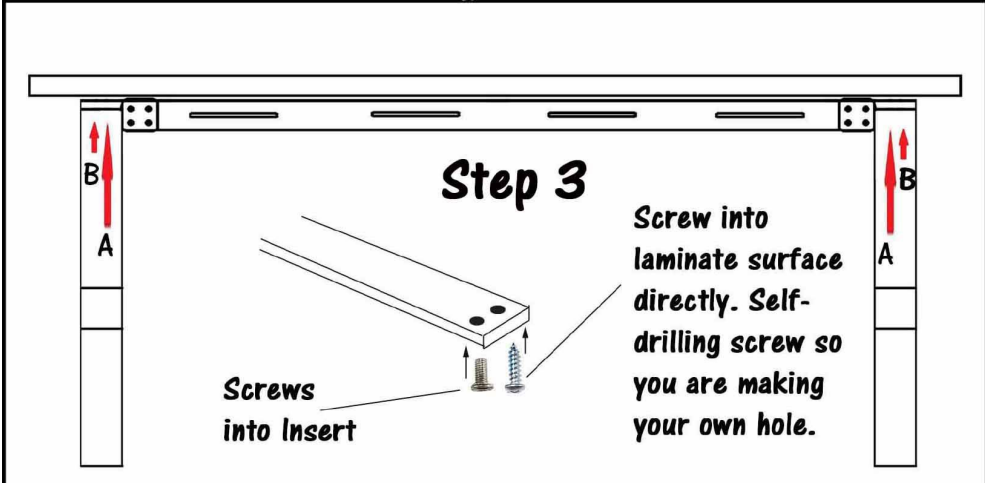


Step 1) Attach Cross Beam to Legs using 16 C Screws, 4 in each corner.

Step 2)- Desk frame is width adjustable. Space out your frame to your desired width (66"W or 71"W) and add the D - Knobs & Spacers to tighten in place. (See Picture Left)

Step 3) Time to attach the desktop to the frame. In each corner, use one A self-threading Wood Screw on the inside holes of the desk frame. Once those are installed, attach the B Bolts through the outside holes.

Assemble the desk in this step upside down.



Step 4) Carefully turn desk upright with helper.

