

The superfan[™] corp



WARNING

State and local electrical codes may require that the Superfan[™] be installed by a licensed electrician. Check with your local code officials before installing.

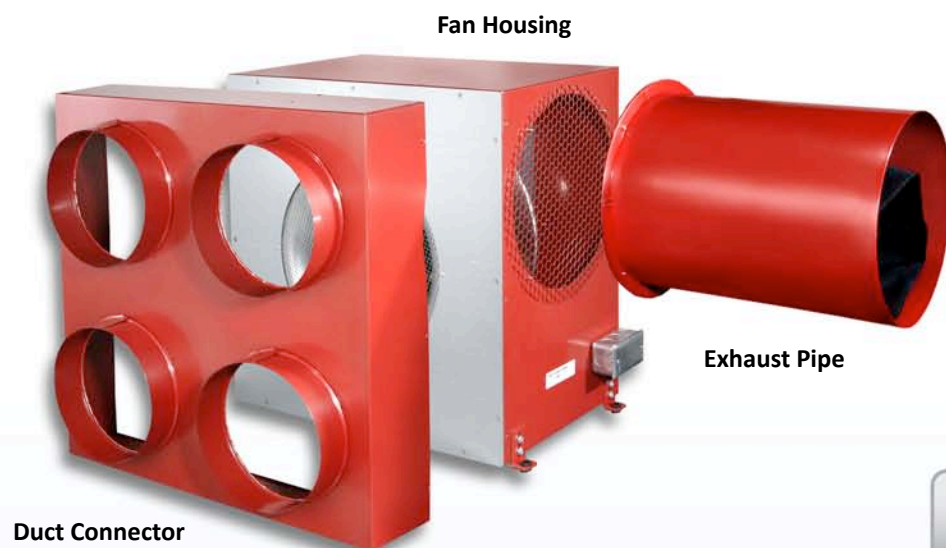
The Superfan[™] is a multi-port duct fan which draws air in through four 8" duct connections and pushes it out through a 12" duct connection. A typical application is as a whole house cooling fan where the fan box is located in the attic and the air is drawn in from individual rooms through open windows. The 12" exhaust port is capable of being ducted directly to the outside. The system is remarkably quiet because the fan is mounted remotely from the occupied space. When the system is not operating, a damper in the exhaust pipe will block undesirable return air flow.



SPECIFICATIONS*

Power Requirements	115 VAC, 60 Hz, 736 Watts
Air Flow (System)(HVI Laboratory test).....	1850 CFM @ .1wg
Sound level at grille (HVI Laboratory test).....	1.9 Sones
Assembled housing dimensions.....	22 ½" L x 22 ½" H x 21" W
Fan housing.....	22 ½" L x 22 ½" H x 14" W
Duct connector.....	22 ½" L x 22 ½" H x 7 ¼" L
Exhaust pipe.....	12" diameter x 16 ½" L
Weight.....	79 pounds (assembled)
Color.....	Burgundy
Warranty.....	3 years
UL.....	Listed
HVI.....	Certified Performance

* Subject to change without notice.



UNPACKING INSTRUCTIONS

The Superfan™ comes in three parts: the fan housing, the duct connectors, and the outlet pipe. You should move these pieces into the area of the final installation before assembling them. You will also find in the packaging:

- Grille cut-out template
- 4 ceiling grilles
- 1 On/Off Switch with switch cover
- 4 mounting feet with integral rubber grommets
- 4 mounting screws (#10 x 2.5")
- 9 screws for attaching the duct connector to the fan housing
- 8 Pan head screws (1/4-20 x ½") for attaching the mounting feet
- 6 Keps nuts (#8-32) for attaching the exhaust duct pipe
- Electrical box cover.

NOTE

The Superfan™ moves over 2000 cubic feet per minute of air. For the system to work properly, this air must be allowed to flow into and out of the system, ideally from the outside of the home, through the home, and directly back to the outside.

This product is not intended to be used for kitchen, range hood exhaust or bath exhaust.



INSTALLATION

CAUTION: The Superfan™ has an automatic thermal protector. To reduce the risk of injury disconnect from power supply before servicing.

STEP 1.

Choose your system location. LOCATE THE FAN AWAY FROM EXTERIOR LOUVERS OR LOCATIONS WHERE THE ENTRANCE OF WATER IS UNLIKELY. A central location will limit the length of the duct runs. When the Superfan™ is used as a whole house cooling fan for optimum performance it is preferable to locate the grilles centrally in the room or near the door. This will keep the path and air movement as long as possible.

NOTE

DISCONNECT POWER AT THE SOURCE BEFORE BEGINNING INSTALLATION.

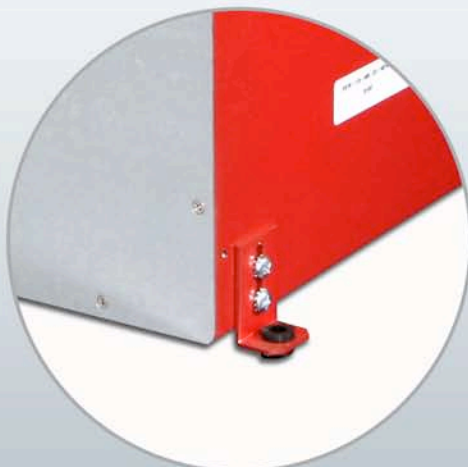


STEP 2.

Lay the FAN HOUSING on its side and attach the DUCT CONNECTOR.

NOTE

The connector is notched to allow for a clean attachment of the exhaust pipe. Be sure to orient the duct connector so that the screw holes line up.



STEP 3.

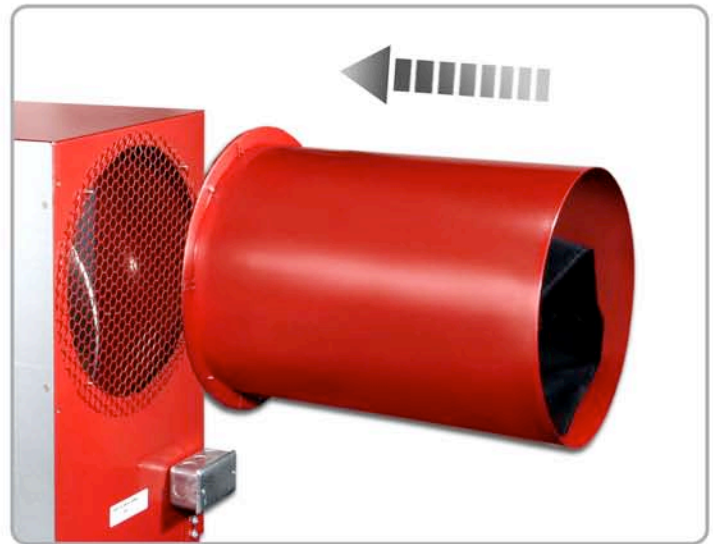
Insert the sound absorbing grommets in the mounting feet then attach two MOUNTING FEET to one side, then upright the fan housing and attach the remaining two feet to the other side and install the other screws in the duct connector

The Superfan™ can then be screwed directly onto the joists.



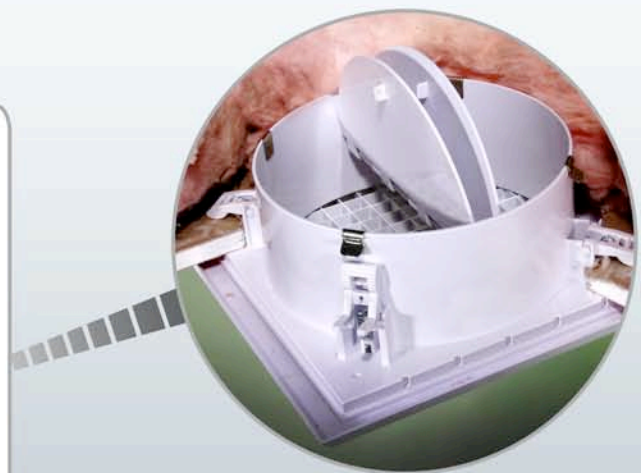
INSTALLATION

- STEP 4.** Line up the EXHAUST PIPE and finger guard with the four mounting studs, and attach the pipe using the “Keps” nuts.



- STEP 5.** Ducting can then be run to the individual rooms. The black plastic caps are provided to block the flow from any unused port. Pull off the cap and attach the ducting. Flexible ducting will muffle any noise from the fan. It should be stretched tightly.

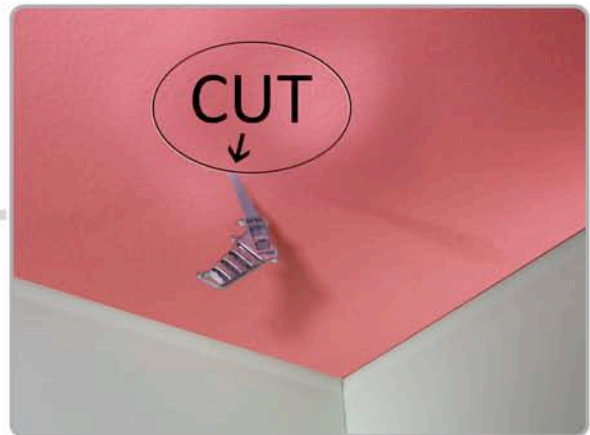
- STEP 6.** Before installing a ceiling grille, open the internal damper in the grille. The damper blades can be snapped out if it is desirable to leave the damper permanently open. The grille can be snapped out for access to the damper after installation if adjustment is required later. There are four mounting clamps on the backside of the grille in the corners. These allow the grille to be mounted without the use of screws. These should be snapped into the open position before the grille is pushed up into the ceiling.



INSTALLATION

STEP 7.

Cut a hole at the grille location.
(A template is provided with
the packaging.)

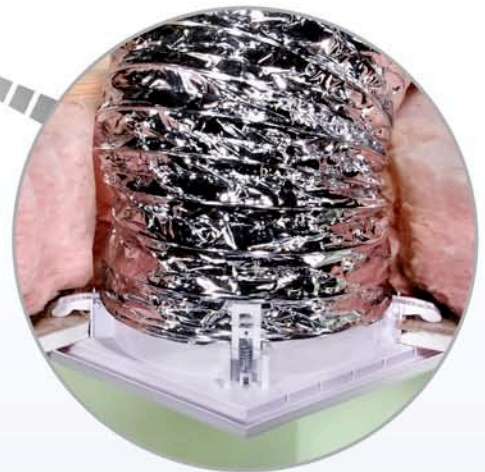


STEP 8.

Push the grille into the hole
and allow the grille mounting
clamps to secure the grille in
place.

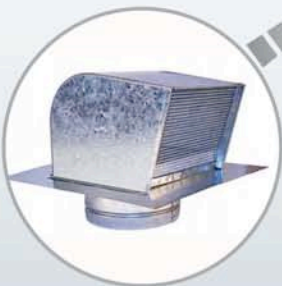


Attach the ducting
to the grille.



STEP 9.

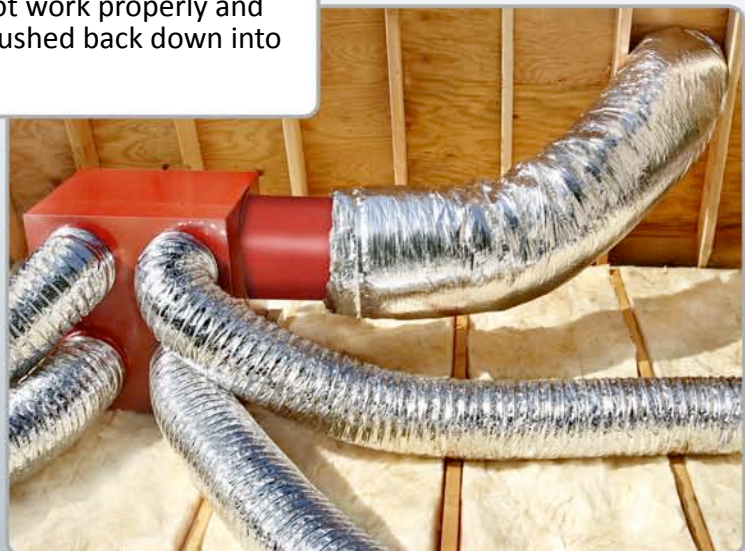
If the fan is to be vented to the outside,
install an exterior hood, attach the 12"
ducting to the outlet pipe and to the
exterior hood. If the fan is vented to the
attic, be sure to have 4 square feet of
net free area to vent the attic otherwise
the system will not work properly and
attic air may be pushed back down into
the house.



ROOF EXHAUST CAP



THROUGH THE WALL EXHAUST

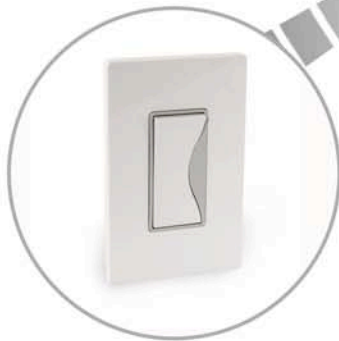


INSTALLATION

- STEP 10.** Feed a 115 VAC 60 Hz 6 amp source into the integral electrical box and make the connections: black (line hot) to black, white (line neutral) to white, and green (ground) to the electrical box.



Switch Options



STANDARD SWITCH (INCLUDED)



ELECTRONIC TIMER



WIRELESS REMOTE

WARNING: To reduce the risk of fire or electrical shock. Do not use this fan with any solid-state speed control device.

STEP 11.

Check the unit for proper operation:

- Turn on power at the source
- Turn the unit on - The fan should start and run smoothly. Check to make sure all the ducting connections are solid and the air flow doesn't cause the ducting to collapse
- Turn the unit off



OPTIONAL OFF SEASON GRILLE INSERTS

Seal your grilles during the winter months - Recommended for cold climates.



WITHOUT INSERT



WITH INSERT

QUESTIONS?

If you have a defective unit, call for an RMA (return merchandise authorization) number. Repairs will not be accepted without an RMA #.

For more information call:

The Superfan™ Corporation

Toll Free: 888.845.6597

Office Direct: 661.775.5979

Fax: 661.457.3835

LIMITED WARRANTY

If within the period of three years from the date of purchase, the Superfan™ (the Product) is defective or malfunctions in normal home use, The Superfan™ Corp, will repair or replace at its discretion the Product without charge for labor or materials.

Conditions, Exclusions and Limitations –

This Warranty is subject to the following conditions, exclusions and limitations:

- * This Warranty does not cover problems resulting from installation, operation or maintenance which has been undertaken other than in accordance with these instructions.
- * This Warranty does not cover problems resulting from defects in or caused by associated equipment (furnaces, solaras, etc.); from repairs or modifications attempted by persons other than The Superfan Corp; from abuse, accidental or shipping damage.
- * This Warranty does not apply to the Product used outside the United States, its territorial possessions, and Canada.
- * Except as set forth above, no express Warranty is given or authorized by Whole House Fan.
- * In no event shall The Superfan Corp be liable for any incidental damages or for any consequential property or commercial damages, irrespective of the cause thereof, occurring either during or after the warranty period, including without limitation any damages to any part of a building or its contents.
- * Any Warranty of merchantability or fitness for any particular purpose shall be limited to the warranty thereunder.

NOTE

Some states do not allow the exclusion or limitation of incidental or consequential damages and some states do not allow limitations on how long an implied warranty lasts, so the above limitations or exclusions may not apply to you. This Warranty gives you specific legal rights and you may also have other rights that vary from state to state.





29021 Ave Sherman, Unit 103, Valencia, CA 91355

