

TOP DESIGNED FOR VARIETY OF REMOVABLE TOP PANELS

NETWORK/GANGING HOLES

12 GAUGE MOUNTING RAILS
 - 13 RMU, 19" EIA 310-D COMPLIANT
 - 0.375" SQ. CAGE NUT (STANDARD)

CABLE TIE-DOWN SLOTS

1.50" DIA. CABLE PASS THROUGH HOLES

RAILS ARE INFINITELY ADJUSTABLE FRONT-TO-REAR

DOORS CAN BE EITHER RIGHT OR LEFT-HAND HINGED

Enhanced Series Enclosure Features

- 13 RMU, 19" EIA 310-D Compliant
- Fully Welded Steel Construction #16 Gauge Steel
- Universal M6 Cage Nut Rails Standard #12 Gauge Steel
- Rack Mounting Hardware Included
- Rails are Infinitely Adjustable, Front to Rear (Max. Rail Spacing is Cabinet Depth minus 2 inches)
- Rails with RMU Markings
- TRC (True Rail Count) Rails
 This certifies that the number of RMU are true and all accessible within the door opening.
- Total of Three 10/32 x 1.5" Copper Plated Grounding Studs (One in bottom, two in top)
- Weight Capacity: 300 lbs.
- Durable Powder Coat Finish
- Field Reversible Door Hinges (No Additional Hardware Required)
- Optional Features:
 - Mesh Doors
 - Ganging Hardware (No Tools Required)
 - Rack-mount Shelves
 - Variety of Top, Bottom, & Side Panels

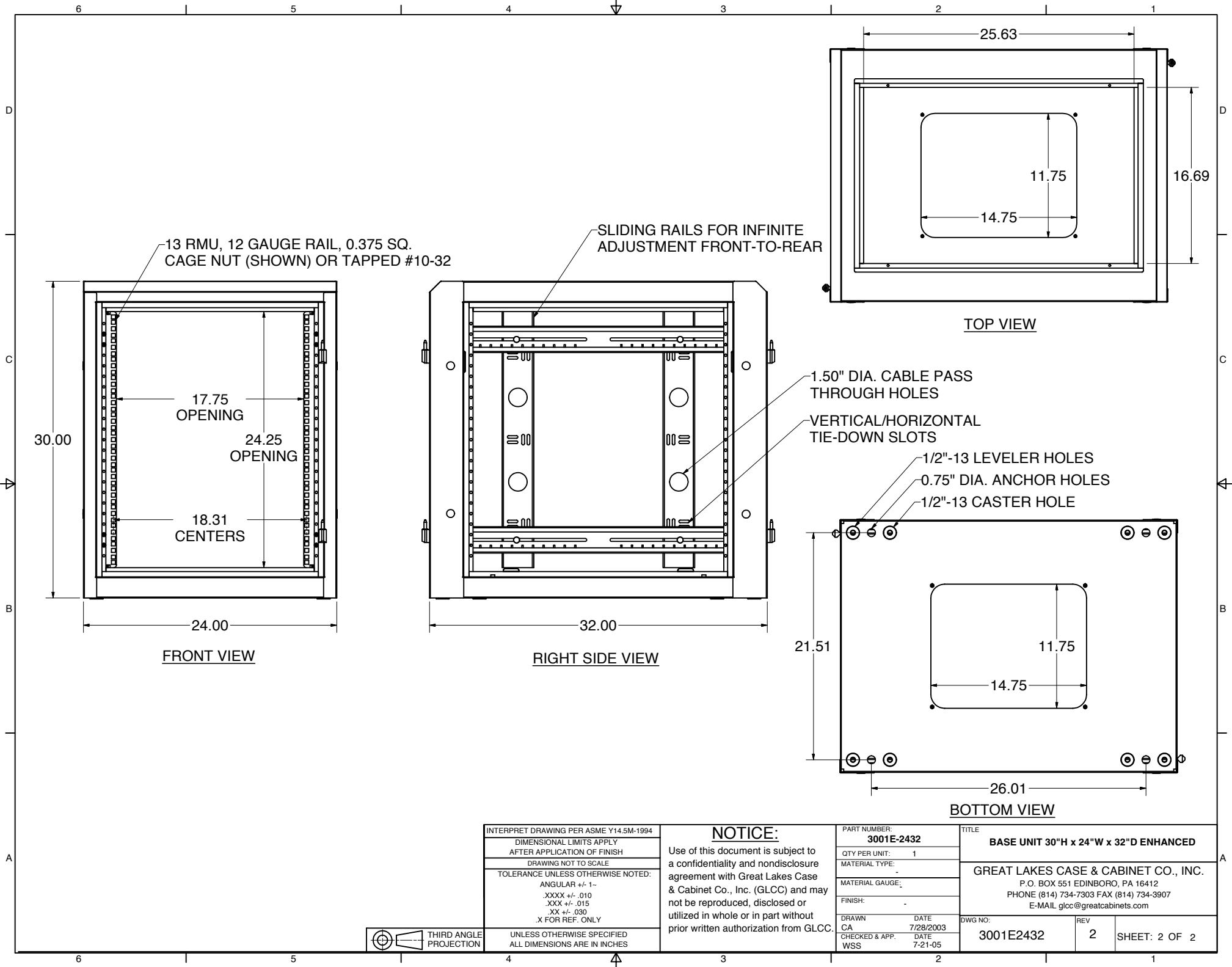
INTERPRET DRAWING PER ASME Y14.5M-1994	
DIMENSIONAL LIMITS APPLY AFTER APPLICATION OF FINISH	
DRAWING NOT TO SCALE	
TOLERANCE UNLESS OTHERWISE NOTED:	
ANGULAR +/-	1-
.XXXX +/-	.010
.XXX +/-	.015
.XX +/-	.030
X FOR REF. ONLY	
UNLESS OTHERWISE SPECIFIED ALL DIMENSIONS ARE IN INCHES	

NOTICE:
 Use of this document is subject to a confidentiality and nondisclosure agreement with Great Lakes Case & Cabinet Co., Inc. (GLCC) and may not be reproduced, disclosed or utilized in whole or in part without prior written authorization from GLCC.

PART NUMBER: 3001E-2432	
QTY PER UNIT:	1
MATERIAL TYPE:	-
MATERIAL GAUGE:	-
FINISH:	-
DRAWN	DATE
CA	7/28/2003
CHECKED & APP.	DATE
WSS	7-21-05

TITLE BASE UNIT 30"H x 24"W x 32"D ENHANCED	
GREAT LAKES CASE & CABINET CO., INC. P.O. BOX 551 EDINBORO, PA 16412 PHONE (814) 734-7303 FAX (814) 734-3907 E-MAIL glcc@greatcabinets.com	
DWG NO: 3001E2432	REV 2
SHEET: 1 OF 2	





INTERPRET DRAWING PER ASME Y14.5M-1994
 DIMENSIONAL LIMITS APPLY
 AFTER APPLICATION OF FINISH
 DRAWING NOT TO SCALE
 TOLERANCE UNLESS OTHERWISE NOTED:
 ANGULAR +/- 1-
 .XXXX +/- .010
 .XXX +/- .015
 .XX +/- .030
 .X FOR REF. ONLY
 UNLESS OTHERWISE SPECIFIED
 ALL DIMENSIONS ARE IN INCHES

NOTICE:
 Use of this document is subject to a confidentiality and nondisclosure agreement with Great Lakes Case & Cabinet Co., Inc. (GLCC) and may not be reproduced, disclosed or utilized in whole or in part without prior written authorization from GLCC.

PART NUMBER:
3001E-2432
 QTY PER UNIT: 1
 MATERIAL TYPE: -
 MATERIAL GAUGE: -
 FINISH: -
 DRAWN: CA DATE: 7/28/2003
 CHECKED & APP. DATE: 7-21-05
 WSS

TITLE
BASE UNIT 30"H x 24"W x 32"D ENHANCED
GREAT LAKES CASE & CABINET CO., INC.
 P.O. BOX 551 EDINBORO, PA 16412
 PHONE (814) 734-7303 FAX (814) 734-3907
 E-MAIL glcc@greatcabinets.com
 DWG NO.: **3001E2432** REV: **2** SHEET: 2 OF 2

