

**Enhanced Series Enclosure Features**

- 37 RMU, 19" EIA 310-D Compliant
- Fully Welded Steel Construction #16 Gauge Steel
- Universal M6 Cage Nut Rails Standard (10/32 Tapped Rails Available) #12 Gauge Steel
- Rack Mounting Hardware Included
- Rails are Infinitely Adjustable, Front to Rear (Max. Rail Spacing is Cabinet Depth minus 2 inches)
- Rails with RMU Markings
- TRC (True Rail Count) Rails  
This certifies that the number of RMU are true and all accessible within the door opening.
- Total of Three 10/32 x 1.5" Copper Plated Grounding Studs (One in bottom, two in top)
- Weight Capacity: 1500 lbs. on levelers, bolted to floor, or on heavy duty casters
- Durable Powder Coat Finish
- Field Reversible Door Hinges (No Additional Hardware Required)
- Optional Features:
  - Cable Lacing Bars
  - Ganging Hardware (No Tools Required)
  - Anti-tip Legs
  - Variety of Top, Bottom, & Side Panels

10/32 x 1.5" COPPER PLATED GROUNDING STUD, QTY (3)  
DOORS CAN BE EITHER RIGHT OR LEFT-HAND HINGED

MOUNTING RAILS ARE FULLY ADJUSTABLE FRONT-TO-REAR



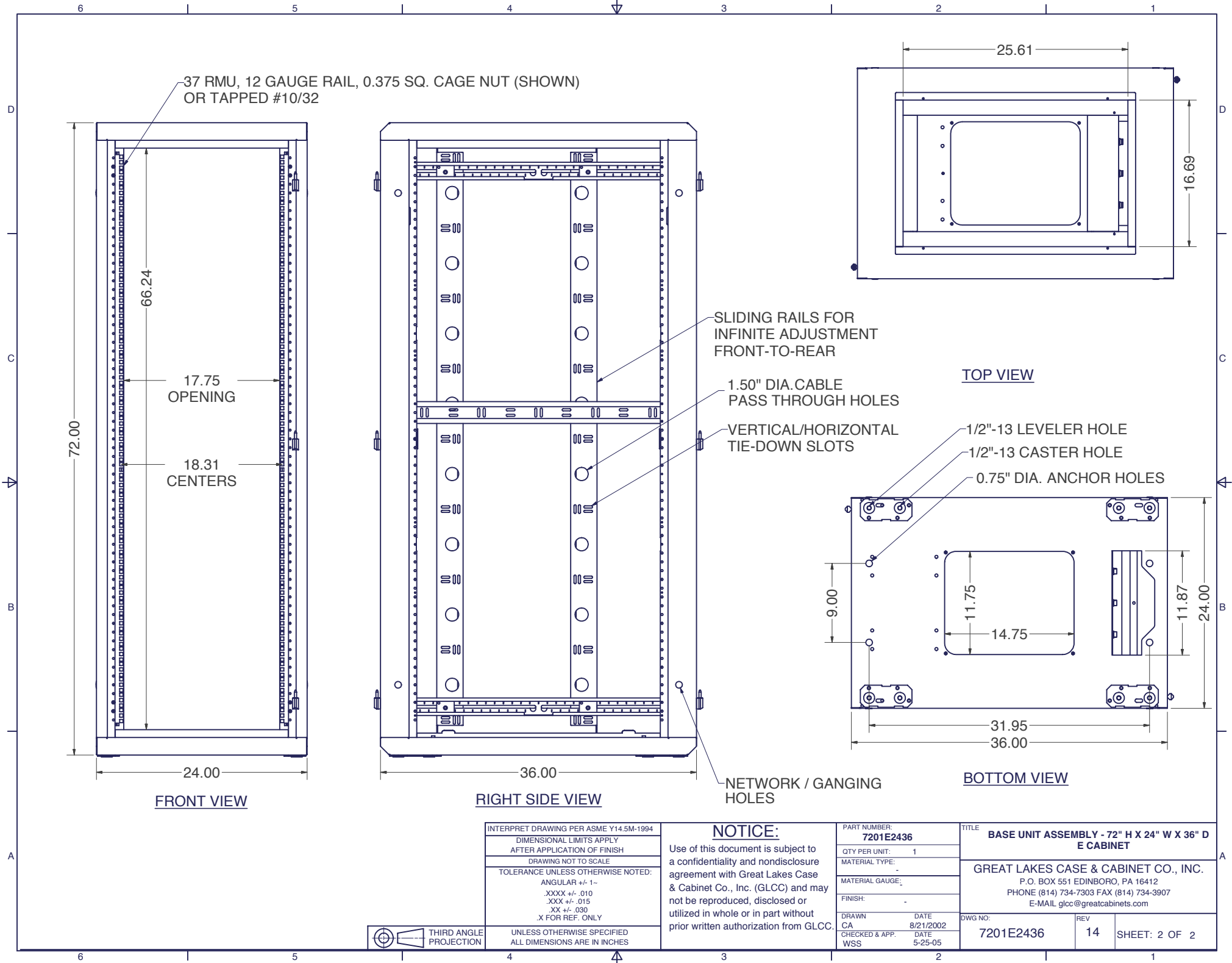
THIRD ANGLE PROJECTION

INTERPRET DRAWING PER ASME Y14.5M-1994
DIMENSIONAL LIMITS APPLY AFTER APPLICATION OF FINISH
DRAWING NOT TO SCALE
TOLERANCE UNLESS OTHERWISE NOTED:
ANGULAR +/- 1-
.XXXX +/- .010
.XXX +/- .015
.XX +/- .030
.X FOR REF. ONLY
UNLESS OTHERWISE SPECIFIED ALL DIMENSIONS ARE IN INCHES

**NOTICE:**  
Use of this document is subject to a confidentiality and nondisclosure agreement with Great Lakes Case & Cabinet Co., Inc. (GLCC) and may not be reproduced, disclosed or utilized in whole or in part without prior written authorization from GLCC.

PART NUMBER: <b>7201E2436</b>	
QTY PER UNIT: 1	
MATERIAL TYPE:	
MATERIAL GAUGE:	
FINISH:	
DRAWN: CA	DATE: 8/21/2002
CHECKED & APP. WSS	DATE: 5-25-05

TITLE <b>BASE UNIT ASSEMBLY - 72" H X 24" W X 36" D E CABINET</b>		
<b>GREAT LAKES CASE &amp; CABINET CO., INC.</b> P.O. BOX 551 EDINBORO, PA 16412 PHONE (814) 734-7303 FAX (814) 734-3907 E-MAIL glcc@greatcabinets.com		
DWG NO: <b>7201E2436</b>	REV <b>14</b>	SHEET: 1 OF 2



INTERPRET DRAWING PER ASME Y14.5M-1994  
 DIMENSIONAL LIMITS APPLY  
 AFTER APPLICATION OF FINISH  
 DRAWING NOT TO SCALE  
 TOLERANCE UNLESS OTHERWISE NOTED:  
 ANGULAR +/- 1°  
 .XXXX +/- .010  
 .XXX +/- .015  
 .XX +/- .030  
 .X FOR REF. ONLY



THIRD ANGLE  
 PROJECTION

UNLESS OTHERWISE SPECIFIED  
 ALL DIMENSIONS ARE IN INCHES

**NOTICE:**

Use of this document is subject to a confidentiality and nondisclosure agreement with Great Lakes Case & Cabinet Co., Inc. (GLCC) and may not be reproduced, disclosed or utilized in whole or in part without prior written authorization from GLCC.

PART NUMBER:  
**7201E2436**  
 QTY PER UNIT: 1  
 MATERIAL TYPE:  
 -  
 MATERIAL GAUGE:  
 -  
 FINISH:  
 -  
 DRAWN: CA  
 CHECKED & APP. WSS  
 DATE: 8/21/2002  
 DATE: 5-25-05

TITLE  
**BASE UNIT ASSEMBLY - 72" H X 24" W X 36" D  
 E CABINET**  
**GREAT LAKES CASE & CABINET CO., INC.**  
 P.O. BOX 551 EDINBORO, PA 16412  
 PHONE (814) 734-7303 FAX (814) 734-3907  
 E-MAIL glcc@greatcabinets.com  
 DWG NO:  
**7201E2436**  
 REV  
**14**  
 SHEET: 2 OF 2