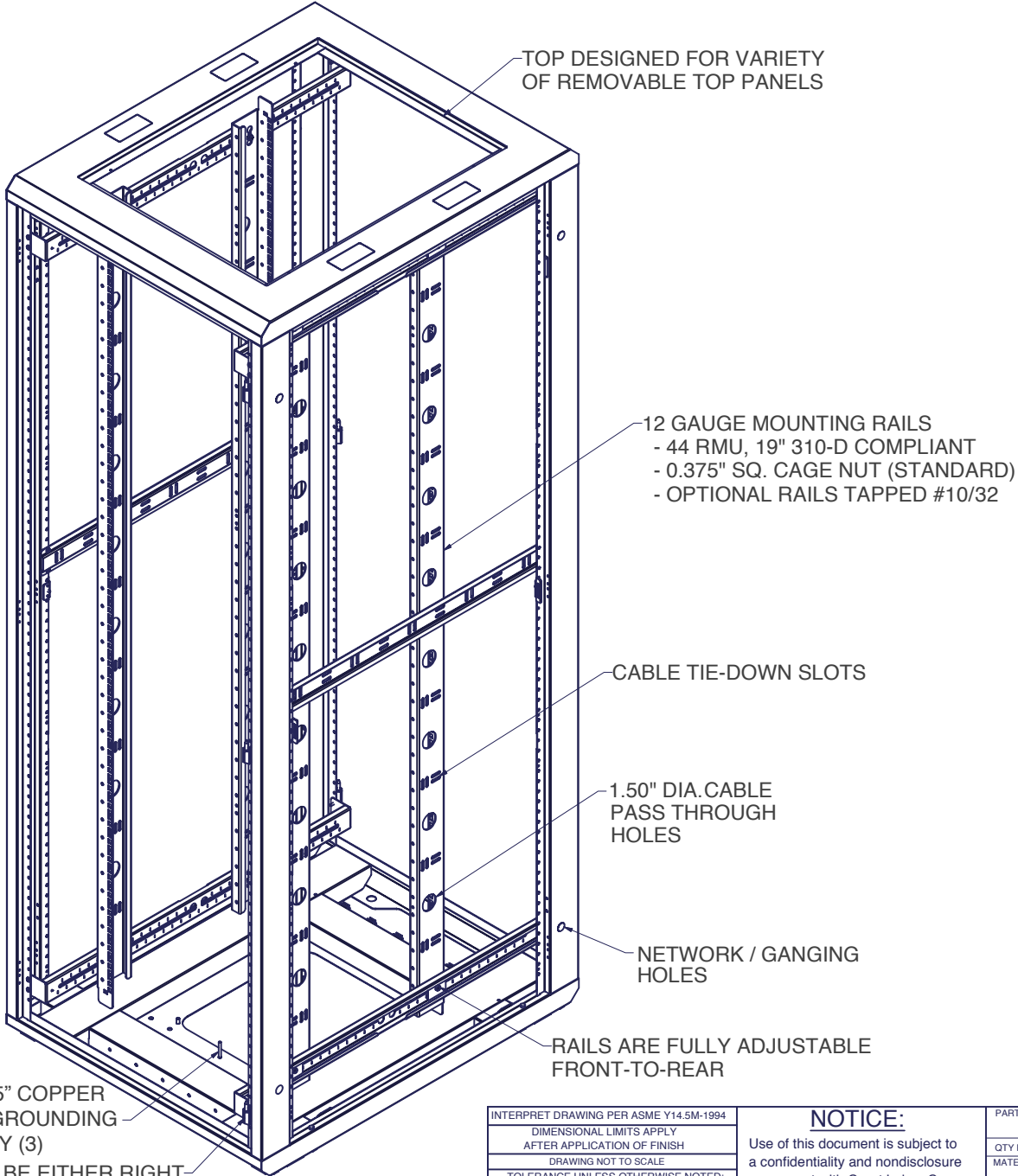


Enhanced Series Enclosure Features

- 44 RMU, 19" EIA 310-D Compliant
- Fully Welded Steel Construction #16 Gauge Steel
- Universal M6 Cage Nut Rails Standard (10/32 Tapped Rails Available) #12 Gauge Steel
- Rack Mounting Hardware Included
- Rails are Infinitely Adjustable, Front to Rear (Max. Rail Spacing is Cabinet Depth minus 2 inches)
- Rails with RMU Markings
- TRC (True Rail Count) Rails This certifies that the number of RMU are true and all accessible within the door opening.
- Total of Three 10/32 x 1.5" Copper Plated Grounding Studs (One in bottom, two in top)
- Weight Capacity: 1500 lbs. on levelers, bolted to floor, or on heavy duty casters
- Durable Powder Coat Finish
- Field Reversible Door Hinges (No Additional Hardware Required)
- Optional Features:
 - Cable Lacing Bars
 - Ganging Hardware (No Tools Required)
 - Anti-tip Legs
 - Variety of Top, Bottom, & Side Panels



10/32 x 1.5" COPPER PLATED GROUNDING STUD, QTY (3)

DOORS CAN BE EITHER RIGHT OR LEFT-HAND HINGED

INTERPRET DRAWING PER ASME Y14.5M-1994
 DIMENSIONAL LIMITS APPLY AFTER APPLICATION OF FINISH
 DRAWING NOT TO SCALE
 TOLERANCE UNLESS OTHERWISE NOTED:
 ANGULAR +/- 1°
 .XXXX +/- .010
 .XXX +/- .015
 .XX +/- .030
 .X FOR REF. ONLY

NOTICE:
 Use of this document is subject to a confidentiality and nondisclosure agreement with Great Lakes Case & Cabinet Co., Inc. (GLCC) and may not be reproduced, disclosed or utilized in whole or in part without prior written authorization from GLCC.

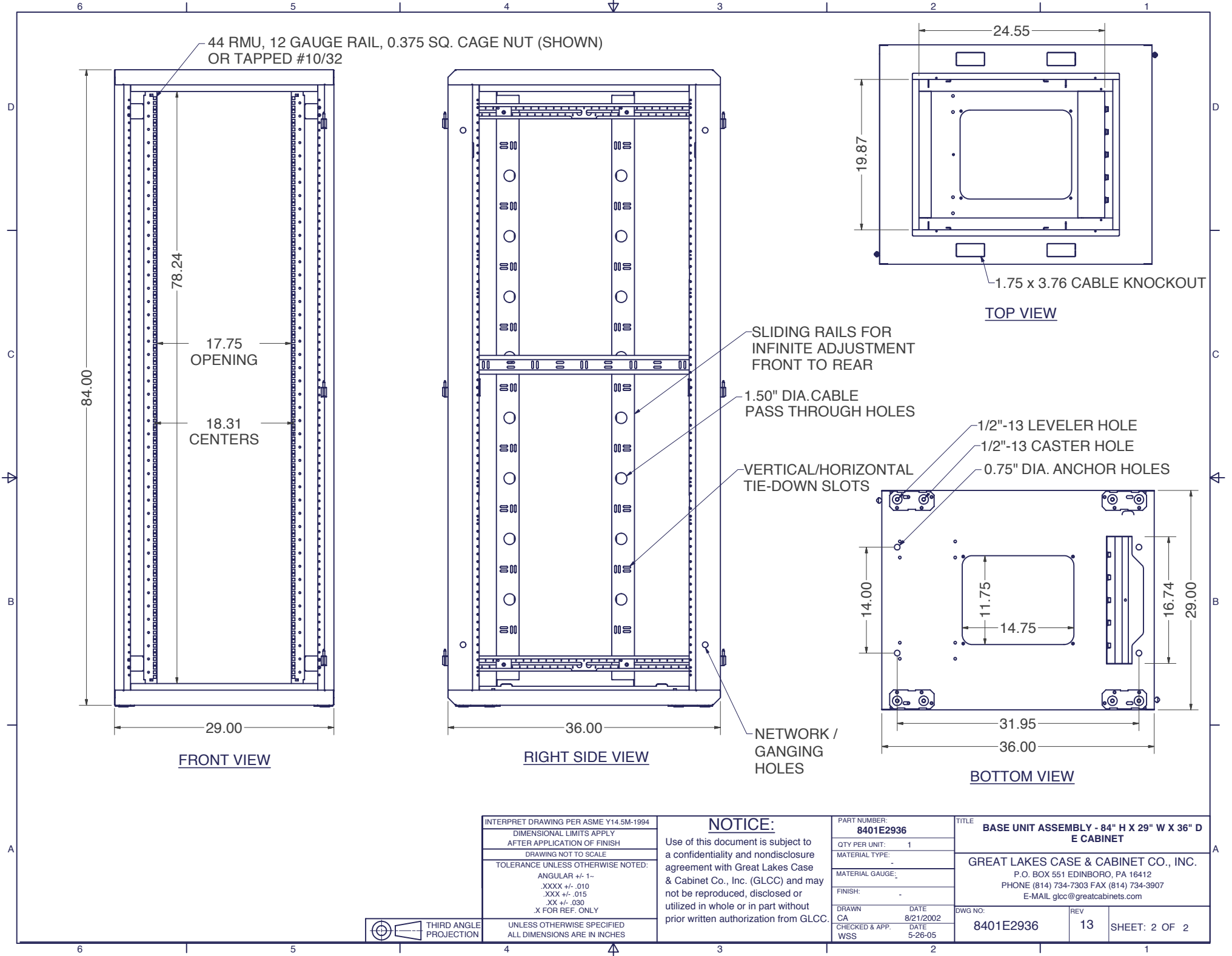
PART NUMBER: 8401E2936	
QTY PER UNIT:	1
MATERIAL TYPE:	-
MATERIAL GAUGE:	-
FINISH:	-
DRAWN	DATE
CA	8/21/2002
CHECKED & APP.	DATE
WSS	5-26-05

TITLE BASE UNIT ASSEMBLY - 84" H X 29" W X 36" D E CABINET	
GREAT LAKES CASE & CABINET CO., INC. P.O. BOX 551 EDINBORO, PA 16412 PHONE (814) 734-7303 FAX (814) 734-3907 E-MAIL glcc@greatcabinets.com	

DWG NO: 8401E2936	REV 13	SHEET: 1 OF 2
-----------------------------	------------------	---------------



UNLESS OTHERWISE SPECIFIED ALL DIMENSIONS ARE IN INCHES



INTERPRET DRAWING PER ASME Y14.5M-1994
 DIMENSIONAL LIMITS APPLY
 AFTER APPLICATION OF FINISH
 DRAWING NOT TO SCALE
 TOLERANCE UNLESS OTHERWISE NOTED:
 ANGULAR +/- 1--
 .XXXX +/- .010
 .XXX +/- .015
 .XX +/- .030
 .X FOR REF. ONLY



THIRD ANGLE
 PROJECTION

UNLESS OTHERWISE SPECIFIED
 ALL DIMENSIONS ARE IN INCHES

NOTICE:

Use of this document is subject to a confidentiality and nondisclosure agreement with Great Lakes Case & Cabinet Co., Inc. (GLCC) and may not be reproduced, disclosed or utilized in whole or in part without prior written authorization from GLCC.

PART NUMBER: 8401E2936	
QTY PER UNIT:	1
MATERIAL TYPE:	-
MATERIAL GAUGE:	-
FINISH:	-
DRAWN CA	DATE 8/21/2002
CHECKED & APP. WSS	DATE 5-26-05

TITLE BASE UNIT ASSEMBLY - 84" H X 29" W X 36" D E CABINET		
GREAT LAKES CASE & CABINET CO., INC. P.O. BOX 551 EDINBORO, PA 16412 PHONE (814) 734-7303 FAX (814) 734-3907 E-MAIL glcc@greatcabinets.com		
DWG NO: 8401E2936	REV 13	SHEET: 2 OF 2