

REMOVABLE TOP PANEL OPTIONS:
 VENTED W/ FAN KNOCKOUTS (#7217 FAN OPTIONAL, 225 CFM)-
 10" FAN (550 CFM)-
 SOLID-

REMOVABLE SIDE PANEL:
 SOLID, WITH LIFT OFF HANDLES
 QUICK RELEASE LATCHES
 w/ KEYED LOCK

REVERSIBLE REAR DOOR OPTIONS:
 -PERIMETER VENTED
 -PLEXIGLASS
 -MESH DOOR

REVERSIBLE FRONT DOOR OPTIONS:
 PLEXIGLAS-
 PERIMETER VENTED-
 MESH DOOR-

INTERPRET DRAWING PER ASME Y14.5M-1994
 DIMENSIONAL LIMITS APPLY
 AFTER APPLICATION OF FINISH
 DRAWING NOT TO SCALE
 TOLERANCE UNLESS OTHERWISE NOTED:
 ANGULAR +/- 1'
 .XXXX +/- .010
 .XXX +/- .015
 .XX +/- .030
 .X FOR REF. ONLY

NOTICE:
 Use of this document is subject to a confidentiality and nondisclosure agreement with Great Lakes Case & Cabinet Co., Inc. (GLCC) and may not be reproduced, disclosed or utilized in whole or in part without prior written authorization from GLCC.

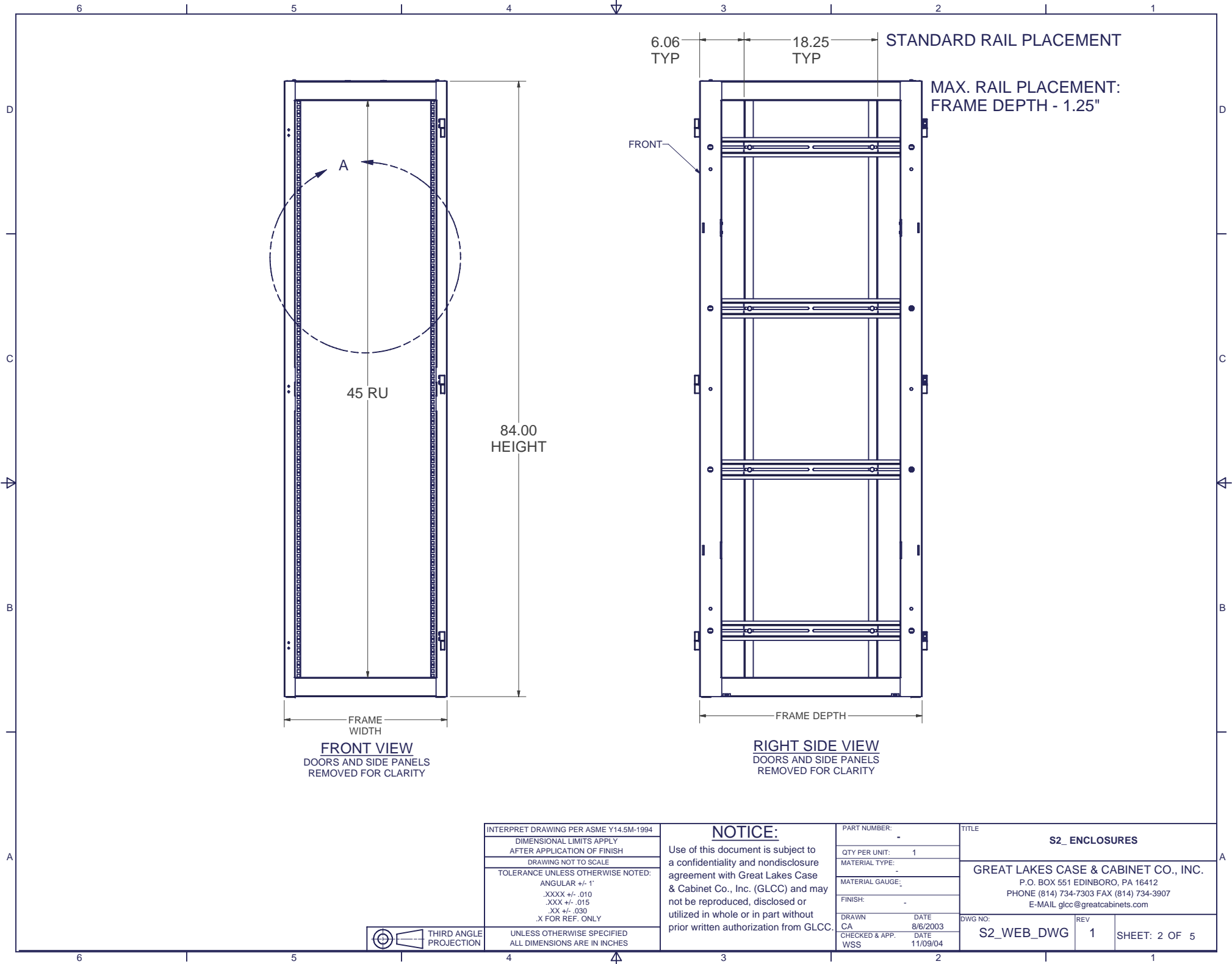
PART NUMBER: -
 QTY PER UNIT: 1
 MATERIAL TYPE: -
 MATERIAL GAUGE: -
 FINISH: -
 DRAWN: CA DATE: 8/6/2003
 CHECKED & APP. DATE: WSS 11/09/04

TITLE
S2_ENCLOSURES
 GREAT LAKES CASE & CABINET CO., INC.
 P.O. BOX 551 EDINBORO, PA 16412
 PHONE (814) 734-7303 FAX (814) 734-3907
 E-MAIL glcc@greatcabinets.com



THIRD ANGLE PROJECTION
 UNLESS OTHERWISE SPECIFIED
 ALL DIMENSIONS ARE IN INCHES

DWG NO: **S2_WEB_DWG** REV: **1** SHEET: 1 OF 5



INTERPRET DRAWING PER ASME Y14.5M-1994
 DIMENSIONAL LIMITS APPLY
 AFTER APPLICATION OF FINISH
 DRAWING NOT TO SCALE
 TOLERANCE UNLESS OTHERWISE NOTED:
 ANGULAR +/- 1'
 .XXXX +/- .010
 .XXX +/- .015
 .XX +/- .030
 .X FOR REF. ONLY

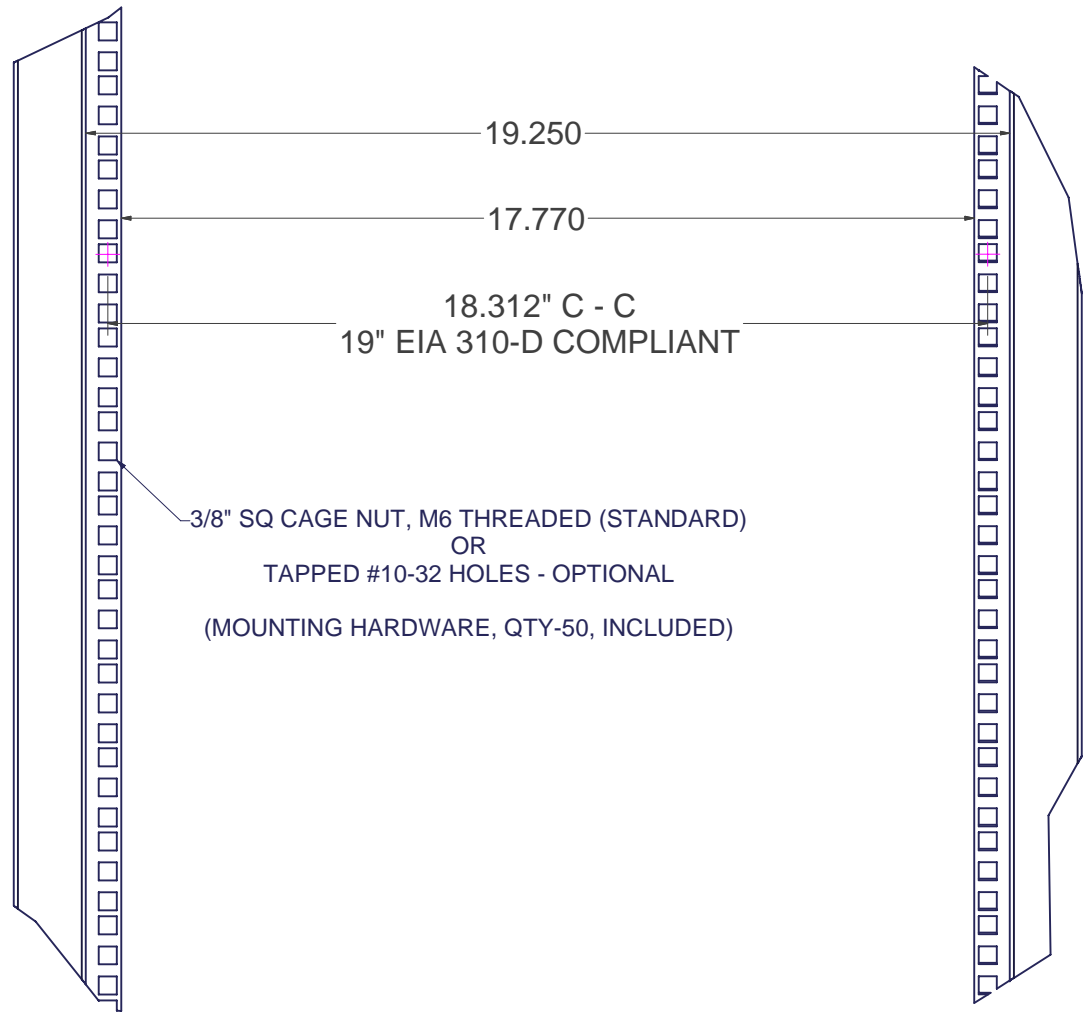
NOTICE:
 Use of this document is subject to a confidentiality and nondisclosure agreement with Great Lakes Case & Cabinet Co., Inc. (GLCC) and may not be reproduced, disclosed or utilized in whole or in part without prior written authorization from GLCC.

PART NUMBER: -
 QTY PER UNIT: 1
 MATERIAL TYPE: -
 MATERIAL GAUGE: -
 FINISH: -
 DRAWN: CA DATE: 8/6/2003
 CHECKED & APP. DATE: 11/09/04
 WSS

TITLE
S2_ENCLOSURES
 GREAT LAKES CASE & CABINET CO., INC.
 P.O. BOX 551 EDINBORO, PA 16412
 PHONE (814) 734-7303 FAX (814) 734-3907
 E-MAIL glcc@greatcabinets.com
 DWG NO: S2_WEB_DWG
 REV: 1
 SHEET: 2 OF 5



UNLESS OTHERWISE SPECIFIED
 ALL DIMENSIONS ARE IN INCHES



3/8" SQ CAGE NUT, M6 THREADED (STANDARD)
OR
TAPPED #10-32 HOLES - OPTIONAL
(MOUNTING HARDWARE, QTY-50, INCLUDED)

18.312" C - C
19" EIA 310-D COMPLIANT

DETAIL A



THIRD ANGLE
PROJECTION

INTERPRET DRAWING PER ASME Y14.5M-1994
DIMENSIONAL LIMITS APPLY
AFTER APPLICATION OF FINISH
DRAWING NOT TO SCALE
TOLERANCE UNLESS OTHERWISE NOTED:
ANGULAR +/- 1'
.XXXX +/- .010
.XXX +/- .015
.XX +/- .030
.X FOR REF. ONLY

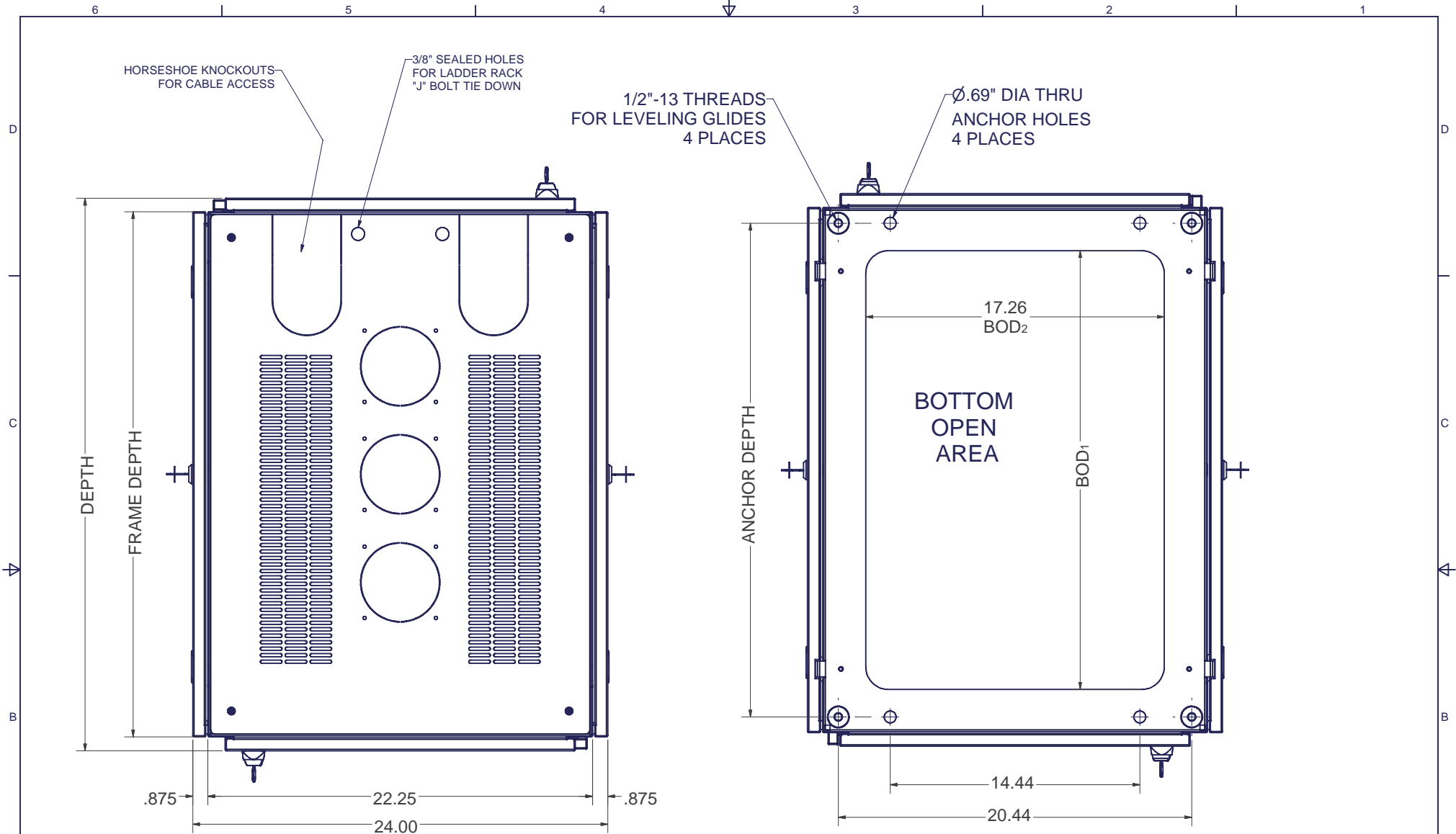
UNLESS OTHERWISE SPECIFIED
ALL DIMENSIONS ARE IN INCHES

NOTICE:

Use of this document is subject to a confidentiality and nondisclosure agreement with Great Lakes Case & Cabinet Co., Inc. (GLCC) and may not be reproduced, disclosed or utilized in whole or in part without prior written authorization from GLCC.

PART NUMBER: -
QTY PER UNIT: 1
MATERIAL TYPE: -
MATERIAL GAUGE: -
FINISH: -
DRAWN: CA DATE: 8/6/2003
CHECKED & APP. DATE: 11/09/04
WSS.

TITLE S2_ENCLOSURES		
GREAT LAKES CASE & CABINET CO., INC. P.O. BOX 551 EDINBORO, PA 16412 PHONE (814) 734-7303 FAX (814) 734-3907 E-MAIL glcc@greatcabinets.com		
DWG NO: S2_WEB_DWG	REV 1	SHEET: 3 OF 5



TOP VIEW

BOTTOM VIEW

INTERPRET DRAWING PER ASME Y14.5M-1994
 DIMENSIONAL LIMITS APPLY
 AFTER APPLICATION OF FINISH
 DRAWING NOT TO SCALE
 TOLERANCE UNLESS OTHERWISE NOTED:
 ANGULAR +/- 1'
 .XXXX +/- .010
 .XXX +/- .015
 .XX +/- .030
 .X FOR REF. ONLY



THIRD ANGLE
 PROJECTION

UNLESS OTHERWISE SPECIFIED
 ALL DIMENSIONS ARE IN INCHES

NOTICE:

Use of this document is subject to a confidentiality and nondisclosure agreement with Great Lakes Case & Cabinet Co., Inc. (GLCC) and may not be reproduced, disclosed or utilized in whole or in part without prior written authorization from GLCC.

PART NUMBER:	-
QTY PER UNIT:	1
MATERIAL TYPE:	-
MATERIAL GAUGE:	-
FINISH:	-
DRAWN	DATE
CA	8/6/2003
CHECKED & APP.	DATE
WSS	11/09/04

TITLE	
S2_ENCLOSURES	
GREAT LAKES CASE & CABINET CO., INC. P.O. BOX 551 EDINBORO, PA 16412 PHONE (814) 734-7303 FAX (814) 734-3907 E-MAIL glcc@greatcabinets.com	
DWG NO:	REV
S2_WEB_DWG	1
SHEET: 4 OF 5	

S² SERIES OF ENCLOSURES

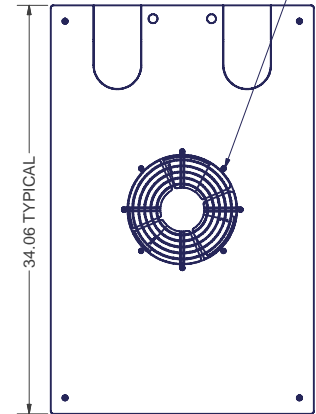
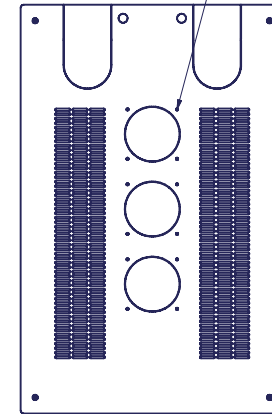
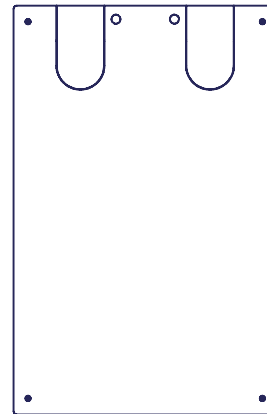
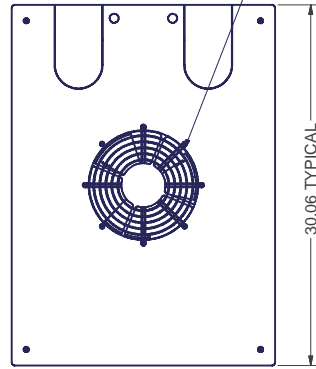
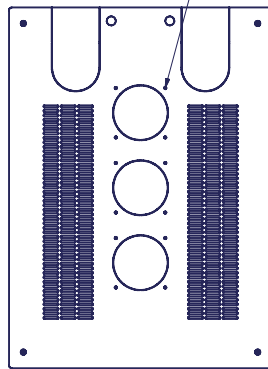
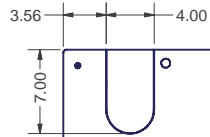
GLCC PART NUMBER	TPS22432	TPS22436
HEIGHT	84.00	84.00
WIDTH	24.00	24.00
DEPTH	32.00	36.00
FRAME WIDTH	22.25	22.25
FRAME DEPTH	30.38	34.38
RU	45 (78.75)	45 (78.75)
ANCHOR WIDTH	14.44	14.44
ANCHOR DEPTH	28.56	32.56
BOD ₁ WIDTH	17.26	17.26
BOD ₂ DEPTH	25.39	29.39

KNOCK OUTS FOR OPTIONAL
FAN ASSEMBLY PART NUMBER
7217 (225 CFM)

KNOCK OUTS FOR OPTIONAL
FAN ASSEMBLY PART NUMBER
7217 (225 CFM)

10" FAN MOTOR
550 CFM

10" FAN MOTOR
550 CFM



SOLID TOP PANEL

VENTED TOP
PANEL

10" FAN TOP PANEL

SOLID TOP PANEL

VENTED TOP
PANEL

10" FAN TOP PANEL

P/N: TPS2-2432S

P/N: TPS2-2432L

P/N: TPS2-2432F10

P/N: TPS2-2436S

P/N: TPS2-2436L

P/N: TPS2-2436F10

INTERPRET DRAWING PER ASME Y14.5M-1994
DIMENSIONAL LIMITS APPLY
AFTER APPLICATION OF FINISH
DRAWING NOT TO SCALE
TOLERANCE UNLESS OTHERWISE NOTED:
ANGULAR +/- 1'
.XXXX +/- .010
.XXX +/- .015
.XX +/- .030
.X FOR REF. ONLY

NOTICE:

Use of this document is subject to a confidentiality and nondisclosure agreement with Great Lakes Case & Cabinet Co., Inc. (GLCC) and may not be reproduced, disclosed or utilized in whole or in part without prior written authorization from GLCC.

PART NUMBER: -
QTY PER UNIT: 1
MATERIAL TYPE: -
MATERIAL GAUGE: -
FINISH: -
DRAWN: CA DATE: 8/5/2003
CHECKED & APP. DATE: 11/09/04
WSS

TITLE
21.930"W X 30.058"D VENTED, FAN TOP PANEL
GREAT LAKES CASE & CABINET CO., INC.
P.O. BOX 551 EDINBORO, PA 16412
PHONE (814) 734-7303 FAX (814) 734-3907
E-MAIL glcc@greatcabinets.com



THIRD ANGLE
PROJECTION
UNLESS OTHERWISE SPECIFIED
ALL DIMENSIONS ARE IN INCHES

DWG NO: S2_WEB_DWG
REV: 1
SHEET: 5 OF 5