



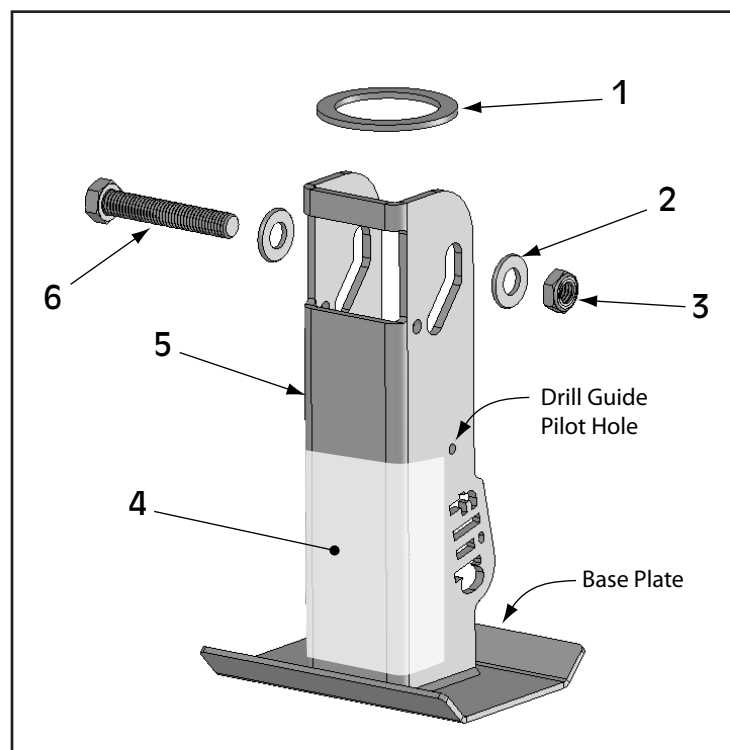
# Installation and Operation Instructions

Model 88-00-6500



## Parts Breakdown

Fig. #	Part #	Description	Qty.
1	88-01-6200	Spacer Ring	1
2	90-04-9110	1/2" Washer	2
3	90-04-9285	1/2" Nylock nut	1
4	BD088-WS	Warning Sticker	1
5	88-01-6600	Flip Automatic Jack Foot	1
6	88-01-6150	1/2" x 3" bolt	1
Not Shown	BD088	Instruction Sheet	1



## ⚠ WARNING

- Read this material before using this product. Failure to do so can result in serious injury or death.
- Never exceed max 1,400 lb. tongue weight rating.
- Do not use to support trailer parked on grade greater than 3% (1.72°).
- Chock both sets of trailer tires while supporting trailer with jack foot.
- Do not support trailer with jack foot placed on un-level ground or debris. Jack foot base plate must be in complete contact with ground.
- Support tongue weight with jack foot in vertical position only when attachment bolt is resting at bottom of guide slot.
- Replace worn or faded safety label.

## Tools Needed for Installation:

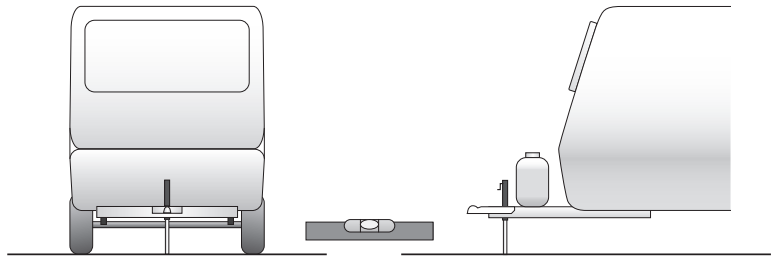
- 3/16" Metal Drill Bit
- 1/2" Metal Drill Bit
- Drill
- Wood Block
- (2) 3/4" wrenches

## ⚠ CAUTION

- Always use adequate personal protective equipment when installing.
- Wear safety glasses when installing.
- Avoid pinch points between jack extension, spacer ring, jack, and trailer frame when retracting jack.

## Installation Instructions

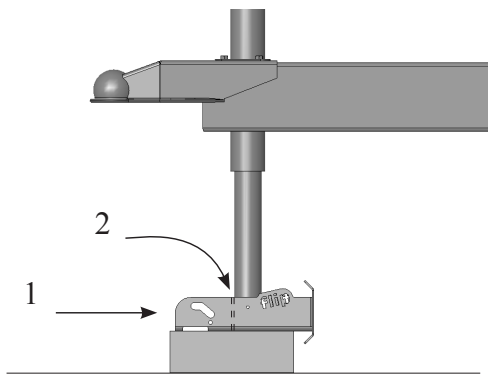
**(1)** Locate trailer on a flat level surface, such as a driveway or parking lot. Chock both sides of the trailer, and set tow vehicle parking brake. Keep trailer coupled to tow vehicle, or place jack stands under trailer tongue to support trailer without the use of the tongue jack. Disconnect trailer plug, safety chains, and safety breakaway cable from the tow vehicle and move them out of the way.



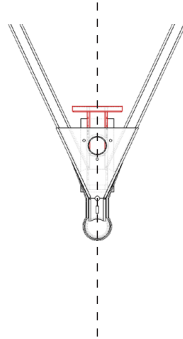
*Install Flip™ jack foot with trailer parked on level ground both side-to-side and front-to-back.*



**Never exceed max 1,400 lb. tongue weight rating.**



*Push jack foot backward(1) so that inner jack tube is tight to locating plate(2).*



*Make sure jack foot is placed parallel to the trailer before drilling guide holes.*

**(2)** Retract the tongue jack far enough that you can fit the wood block and Fastway® Flip™ jack foot under the inner jack tube. Place the wood block on the ground, and place the jack foot on top, face down with the base plate toward the back of the trailer.

Slowly extend the jack tube until it rests on the jack foot and wood block, and so that the locating plate is pushed up tightly against the front wall of the inner jack tube.

The drill guide holes should be perpendicular to the trailer and jack tube. They should be 1-1/2" from the bottom of the tube, and centered on the tube.

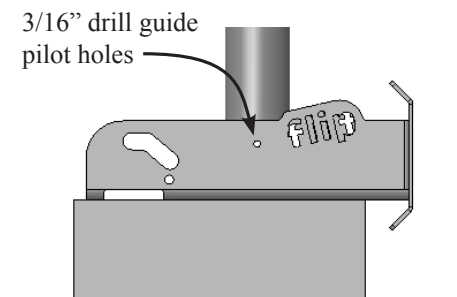
Extend the jack until the weight resting on the Flip jack foot holds it securely in place so that it will not move while the guide holes are being drilled.



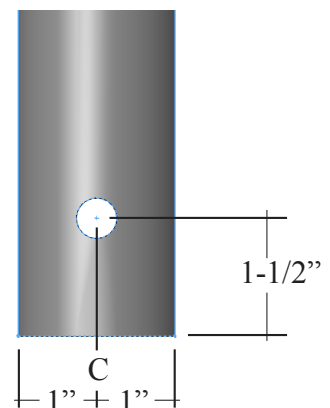
**Always wear adequate personal protection equipment while installing. Wear safety glasses.**

**(3)** Use the 3/16" bit and drill a pilot hole on each side of the jack tube using the drill guide pilot holes on both sides of the jack foot as a guide. Retract the jack to a comfortable drilling height, and remove the Flip jack foot and the wood block.

Use the 1/2" drill bit to enlarge a pilot hole. Once the tube wall has been penetrated, ream out the hole slightly to de-burr it and open it up. Switch sides, and drill and ream the second hole. Pass the drill bit all the way through the inner jack tube to make sure there is a clean path for the bolt all the way through the tube.

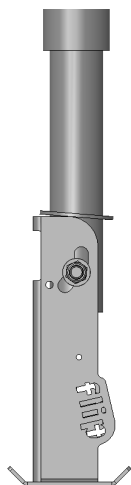
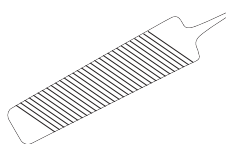
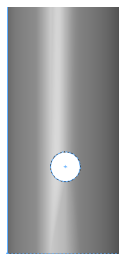


*Use drill guide pilot hole to drill 3/16" pilot holes on each side of inner jack tube.*



*Enlarge with 1/2" drill bit.*

(4) If drilling the holes leaves a burr or lip, use a file to smooth the edge so that the pivoting operation of the Flip jack foot is not disrupted.



(5) Slide the spacer ring up the inner jack tube and hold it up while you position the jack foot to bolt it on. **NOTE: The spacer ring must be in place or the jack foot will not 'flip' up completely.**

If your jack does not retract far enough to make the Flip automatic jack foot rotate up completely, or if there is an obstruction below the frame that keeps the jack foot from rotating completely, you may add additional rings to take up that space. Additional rings are available from your dealership, or directly from Fastway® - [www.FastwayTrailer.com](http://www.FastwayTrailer.com).

Position the jack foot around the inner jack tube so that the slot at the top lines up with the 1/2" holes just drilled in the jack tube. You may need to retract the jack. Slide a 1/2" washer onto the 1/2" bolt, and slide it through the slots in the jack foot and holes in the jack tube. Slide the 1/2" washer onto the other end of the bolt, and thread on the Nylock nut. Tighten the nut securely, and then loosen it only to the point that the Flip jack foot can pivot freely up and down, but not enough that it is sloppy or that there is too much play between the jack foot and the inner jack tube. If the jack foot does not drop smoothly into place, this nut may need to be loosened slightly.

## Instructions for Use



**Do not use to support trailer parked on grade greater than 3% (1.72°).  
Do not support trailer with jack foot resting on un-level ground or debris.  
Jack foot base plate must be in complete contact with ground.**

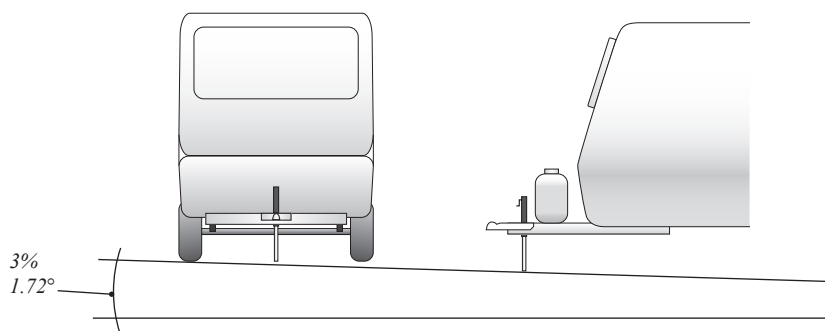
### When uncoupling your trailer:

(1) Make sure that the trailer is parked on relatively level ground. Most improved campsites, such as those found in private and public campgrounds are fine. Pay special attention to the site when dry camping to make sure the slope is not more than a 3% grade ( 1.72° ) either side-to-side or front-to-back.

Also make sure that the spot where the jack foot will rest is as level as possible, and free from debris like sticks or stones that might keep the jack foot from being completely supported.

Chock the wheels on both sides of the trailer securely. Disconnect trailer plug, safety chains, and breakaway cable from the tow vehicle. Uncouple the coupler, and extend the jack to raise the coupler off the ball.

If using a weight distributing hitch, you may use the jack foot to raise both the tow vehicle and trailer to make it easier to disconnect the hitch. Once the spring arms are disengaged, lower the trailer and tow vehicle back to a point where the tow vehicle is supporting all of the trailer's tongue weight. Uncouple the coupler, and extend the jack to raise the coupler off the ball.



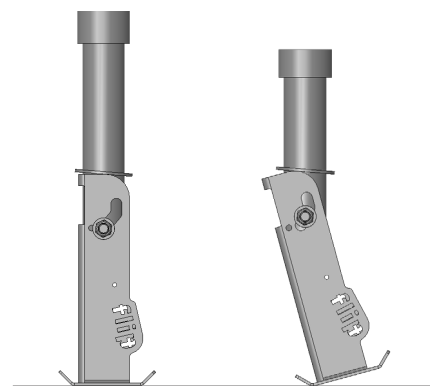
*Do not use Flip with trailer parked on a slope steeper than a 3% grade, or 1.72 degrees.*



**Support tongue weight with jack foot in vertical position only when attachment bolt is resting at bottom of guide slot.**

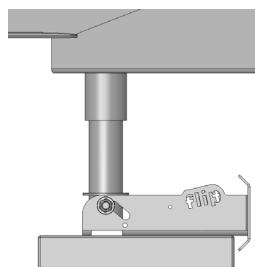
(2) The Flip jack foot is designed to straighten automatically as more weight is applied. At times it may be helpful to move it forward slightly with your foot to make sure it sits directly below the jack so that the jack tube rests correctly at the bottom of the bolt slot, and against the front of the jack foot or on top of the support/locating plate.

If the full tongue weight is placed on the jack with the jack foot out of position, the inner jack tube can bend, resulting in improper function of the jack or jack foot. It may also damage the jack foot or trailer.



*Correct*

*Incorrect*

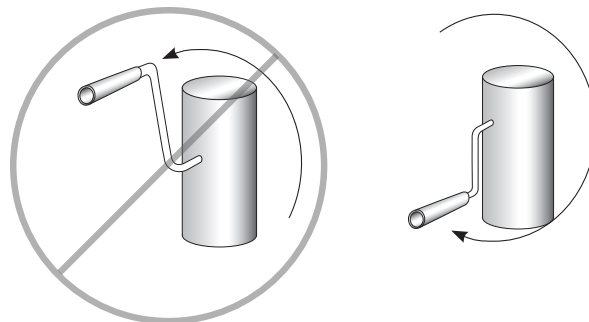


*Low ground clearance option.*

(3) If you must drop the trailer in a place where there is not enough clearance below the jack for the Flip jack foot to pivot down properly, the jack may be extended with the jack foot in a horizontal position. A small block of wood placed directly under the inner jack tube will help keep the weight from bending the Flip jack foot.

### **To couple your trailer:**

(1) Back the hitch ball under the coupler. Retract the tongue jack until the coupler rests on the hitch ball. Lock the coupler. If you are using a weight distributing hitch, extend the jack and tension the weight distribution bars. Retract the jack completely until the flip rotates up and out of the way for towing. Do not force the jack handle after the jack has reached the top of travel. Rotate it back slightly if necessary for towing.

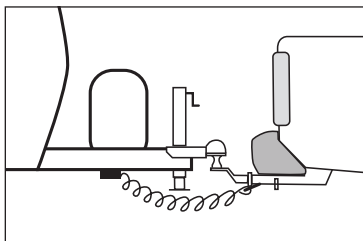


*Don't force jack. Rotate back slightly if necessary.*

## **Other Great Fastway® Products**



**No more broken or damaged cables hanging in the way!**



**Fastway Trailer Products**

533 South 500 West, Provo, UT 84601

(800) 478-5578

**[www.FastwayTrailer.com](http://www.FastwayTrailer.com)**



**ONestep™**  
tandem axle wheel chock

**Easy as 1...2...3**  
**The Fastest and Easiest tandem axle wheel chock available.**



**Fastway®...Faster, Easier.™**