



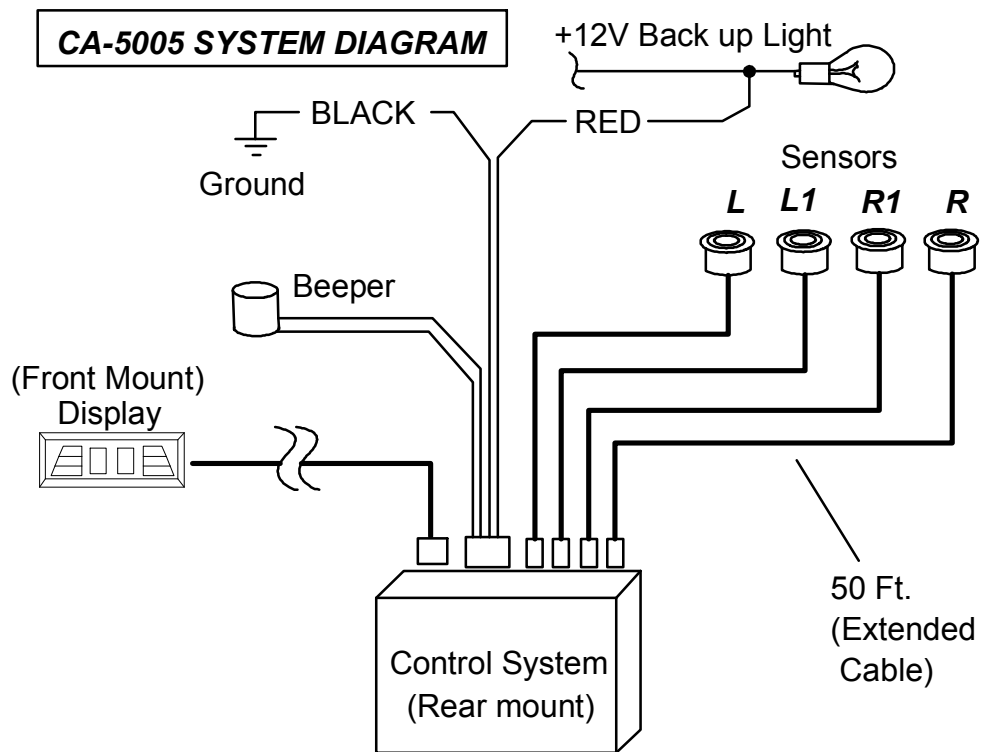
CA-5005 SMD Reverse Parking Sensor

Features:

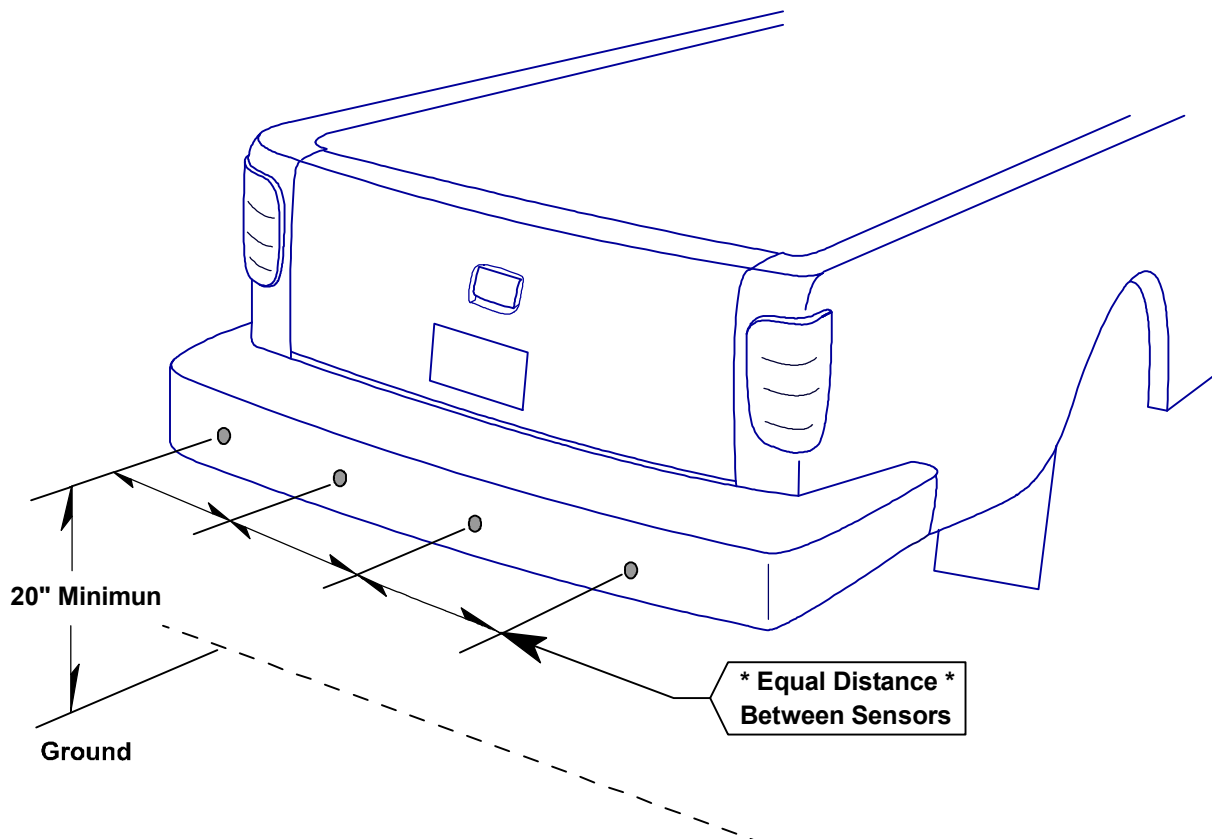
- 2 Digit LED Numerical Distance Display (in feet)
- Multi-Colored Bar Graph Display Indicates Distance to Object and Left or Right.
- Audible Tones With Three Distinct Warnings
- Compact Sensor Design with 50 FT Cable

DISCLAIMER:

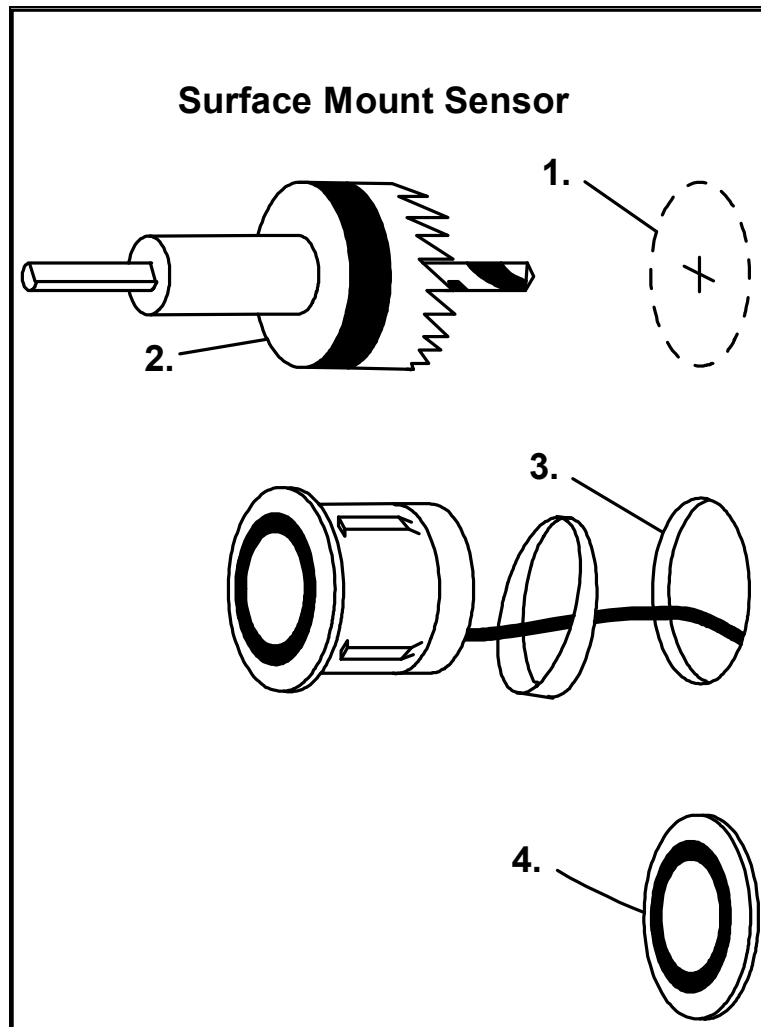
Under no circumstances shall the manufacturer or distributor of the BackStopper™ be held liable for consequential or incidental damages sustained in connection with the use or installation of the BackStopper™ Rear Detection System. The BackStopper™ is designed as a safety enhancement device and is in no way intended as a replacement for rear-view mirrors, side-view mirrors or physically checking the surroundings when backing a vehicle. Always check surroundings for safety when backing!



LOCATING THE SENSORS:



SENSOR INSTALLATION

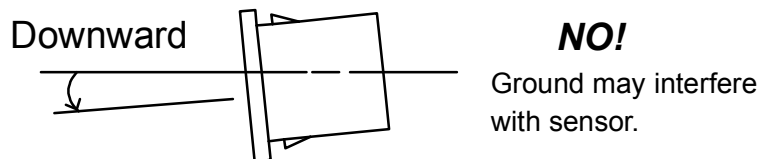
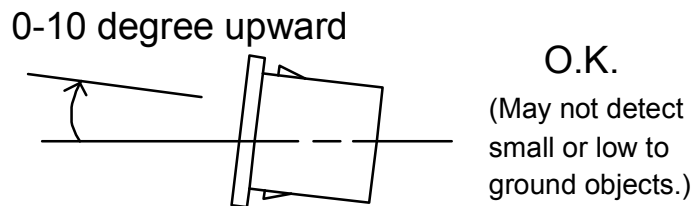
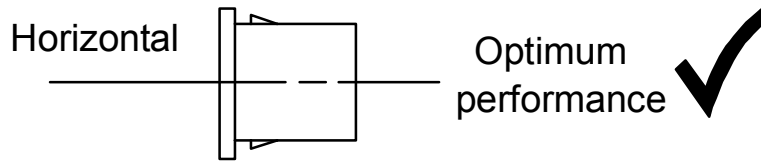


1. Carefully measure and mark sensor locations. Measure, double-check and check again. You are making permanent modification to the vehicle, make sure spacing and angles are correct!
2. Use the supplied 22MM hole saw drill to make sensor holes.
3. Route cable through hole.
4. Gently press in sensor. Hole clearance is critical, make sure sensor fits snugly, but not over-tight. Crushed sensors will provide inaccurate readings and false alarms.

WARNING! Before drilling the hole, make sure that the sensor will not be angling towards the ground causing the sensor to continuously beep!

SENSOR ANGLE:

SIDE VIEW



Tech Support (800) 998-6880

CRIMESTOPPER

1770 S. Tapo St.
Simi Valley, CA 93063
(800) 998-6880
www.crimestopper.com
email@crimestopper.com