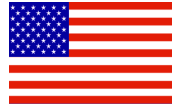


# STAMP-PERFECT SSP HAND STAMP MACHINE

Manufactured by Argon Tool, Inc.  
Available online, [www.steelstamps.com](http://www.steelstamps.com)



Made In The U.S.A.



The quietest machine  
we have ever made.

NO HAMMER NOISE.

NO TOOLS REQUIRED  
TO OPERATE

Weighs under  
14 pounds

## STAMP-PERFECT SSP Professional Model Jewelry Marking Machine

Holds hand stamp straight and square while  
providing a consistent and uniform marking depth.

Machine press strength and the depth of mark into  
your jewelry can be adjusted quickly by a small turn of  
the height adjustment screw. See Photos #1 and #2.

Steelstamp.com's exclusive **QUICK CHANGE  
HAND STAMP HOLDER** holds hand stamp in place  
magnetically until you remove it. Accepts **ANY** size  
letter, number or symbol hand stamp you may already  
have in your hand stamp collection.

The machine base is equipped with a sliding anvil plate  
made of hardened tool steel which provides a smooth  
surface on which to position and tape your piece to  
mark. Ruled base plate provides a visual reference  
of movement. A must have for consistently marking  
equal spaced characters in a straight line.

Mounting holes at the rear of the base plate enables  
the machine to be fastened to your work bench or  
table. *Not required, but highly recommended.*

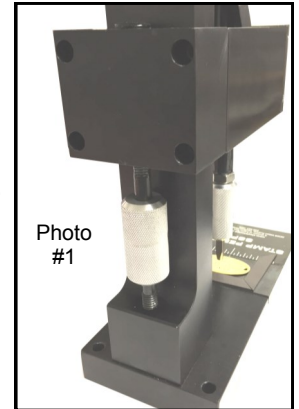
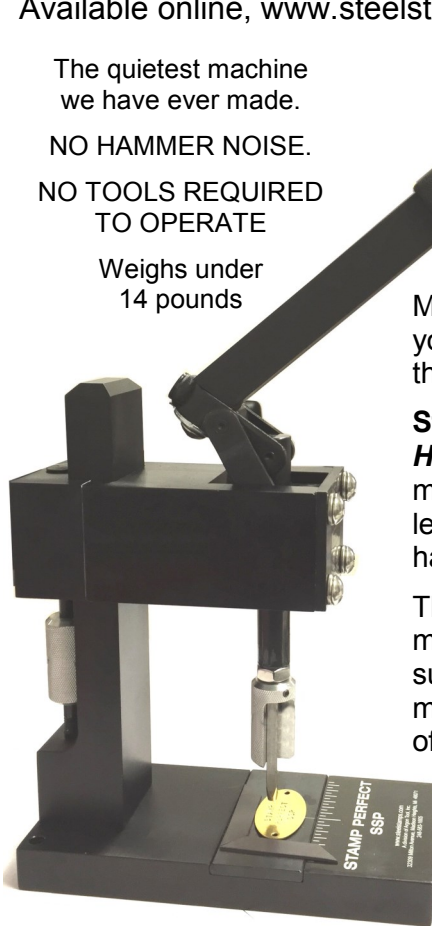


Photo  
#1

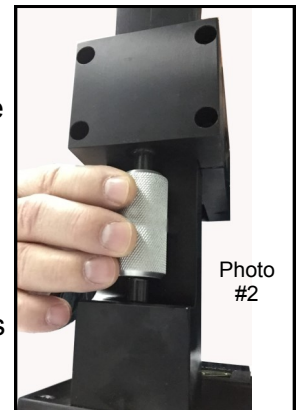
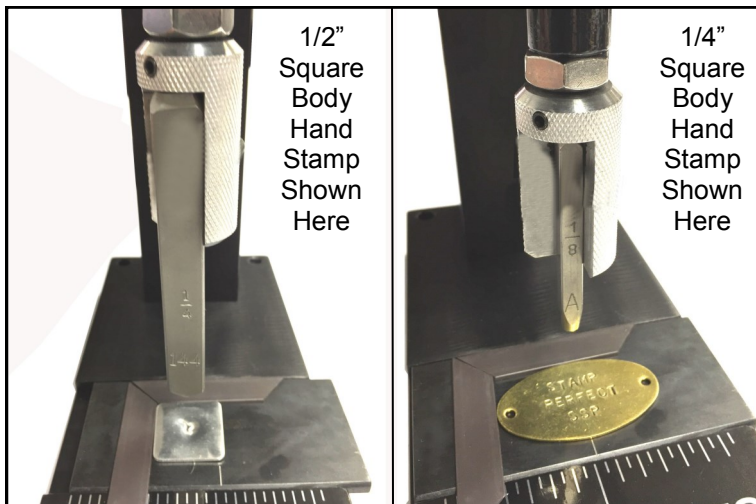


Photo  
#2

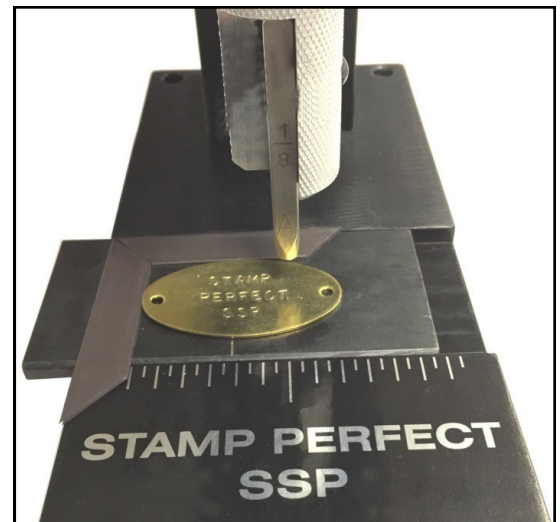
### QUICK CHANGE HAND STAMP HOLDER

Holds **ANY** hand stamp you may own,  
from **ANY** hand stamp manufacturer



1/2"  
Square  
Body  
Hand  
Stamp  
Shown  
Here

1/4"  
Square  
Body  
Hand  
Stamp  
Shown  
Here



### BASE & SLIDING ANVIL PLATE

Ruled base plate provides visual reference of  
movement. A must have for consistently marking  
equally spaced characters in a straight line.

\*Not intended for use with hand stamp bodies larger than 1/2" Square or Round.  
Strong enough to stamp most 1/4" (6mm) Logos.

**steelstamps.com**, a division of ARGON TOOL, INCORPORATED

32309 Milton Avenue, Madison Heights, Mi 48071

Telephone 248-583-1605, Fax-248-588-0051, e-mail [sales@argontool.com](mailto:sales@argontool.com)

# STAMP-PERFECT SSP

Simple to set-up and use.....

**Step 1.** The machine is packaged and shipped to you with the head of the machine set to it's lowest position. Take the machine out of the box and set it on your work table facing you. If the machine lever is not already in the down position, pull the machine lever down so it is pointing at you. Photo #1

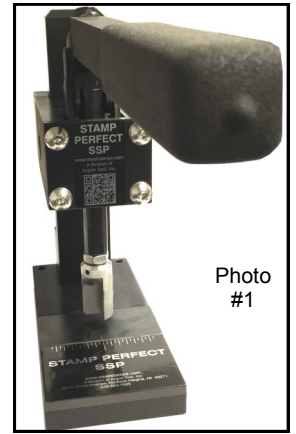


Photo #1

**Step 2.** With your right hand thumb against the column front and your fingers on the knurled height adjusting screw to the back of the column, turn the screw clockwise to raise the head of the machine high enough that you can insert your hand stamp in the quick change holder without dragging the stamp face on the base plate or sliding anvil. Photo #2

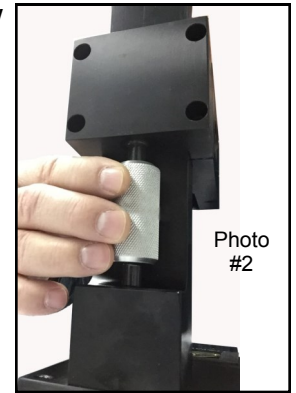


Photo #2

**Step 3.** With the head raised and stamp seated in the stamp holder you can now set the machine head height to mark you piece. **We recommend using a sample piece the same thickness as the piece you intend to mark for set up.** Place your sample piece to mark on the sliding base plate under the hand stamp face. Photo #3

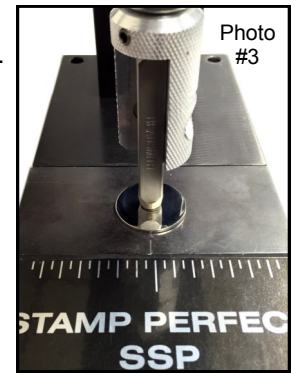


Photo #3

**Step 4.** With your left hand thumb against the column front and your fingers on the knurled height adjusting screw, turn the screw counter-clockwise to lower the head until your hand stamp face is firmly resting against your piece to mark. No need to over power the knurled knob, when you can no longer move the screw with light pressure on your fingers, you may stop. Photo #3

**Step 5.** Lift the handle to raise the stamp face away from your piece to mark. Photo #4. Now, turn the height adjusting screw counter-clockwise 1/2 turn to lower the head enough for your first test mark position. Pull the lever handle down till you feel it bottom and you have stamped your piece. Lift the handle to view your mark.

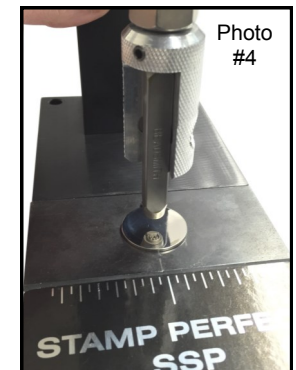


Photo #4

If the lever is too hard to pull down, lift the head of the machine slightly by turning the height adjusting screw 1/4 turn clockwise, then try test marking again.

You may stamp lighter or deeper by raising or lowering the head. A slight movement of the height adjusting screw in either direction will make a big difference in the depth of mark. Start with 1/4 turn adjustments, then less and less, test stamping after each movement to dial in your desired depth of mark.

FYI...the deeper the mark, the more pressure it will take for you to pull the lever down when marking.

**Although the machine is portable, we suggest that it be anchored to a table or work bench. Two mounting holes are provided in the rear of the base plate.**



For technical questions, call our office 1-248-583-1605