

**ken-a-vision**<sup>®</sup>  
KNOWLEDGE THROUGH VISION

## 910-171-210 Furniture Camera Parts List

Threaded Sleeve



Sleeve Nut



USB Adapter



Upper Camera Assembly



USB cable



### Corporate Headquarters

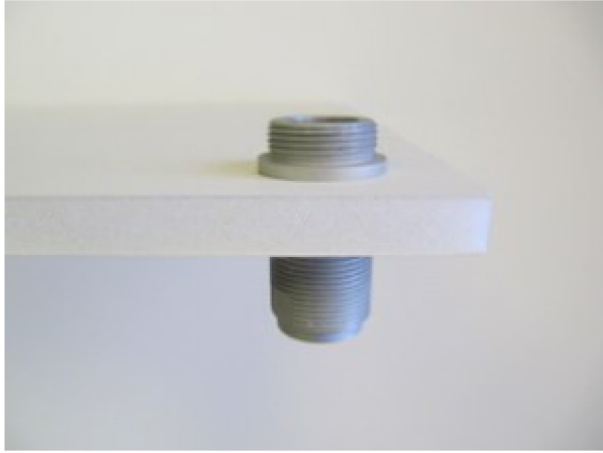
Ken-A-Vision Mfg. Co., Inc.  
5615 Raytown Road  
Kansas City, MO 64133, USA  
Phone: 1-816-353-4787

### International Office

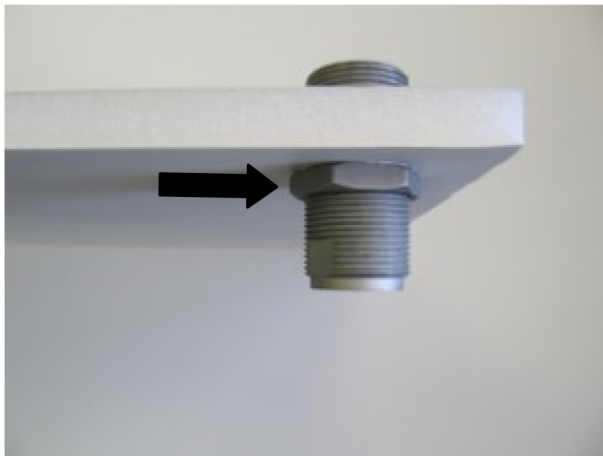
Ken-A-Vision International GmbH  
Alte Bohle 33  
D-50321 Brühl, Germany  
Phone: 49-2232-28197

# 910-171-210 Furniture Camera Assembly Instructions

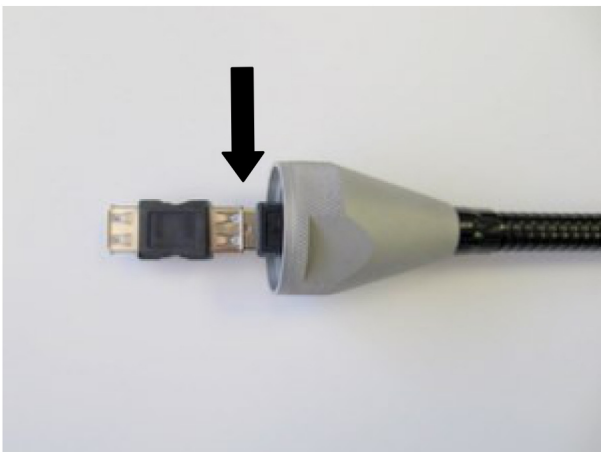
1. Drill 28.5mm (1.125") hole in desired location of furniture and insert threaded sleeve.



2. Secure threaded sleeve with sleeve nut, using 32mm and 25mm wrenches.

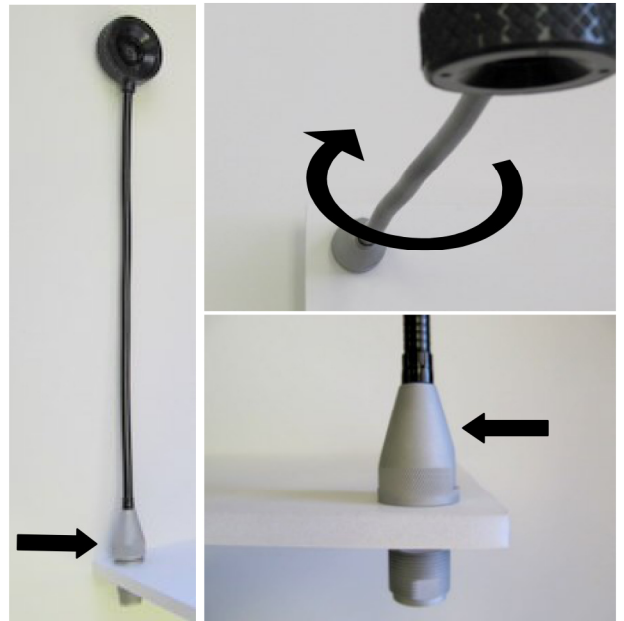


3. Connect USB adapter to upper camera assembly, be sure to insert it fully



4. Straighten gooseneck and attach to threaded sleeve by turning upper camera assembly clockwise.

\*Note: Hand tighten upper camera assembly only. 32mm wrench is for removal of over tightened assembly only.



5. Connect provided USB cable to USB adapter located on the underside of the threaded sleeve. Connect the other end to the USB 2.0 port on computer.

