

Phoneme /sh/ CVCe one syllable



shade
Shane
shrine
shake
shine



shift
short
shred
should
sharp

Shane should shred the tree that casts the **shade** on the neighbors' **shrine** and pool. Tell him to use the **sharp** tool to **shake** it loose from the trunk. The neighbors keep complaining it's blocking the **shine** from their pool.



Phoneme /sh/ Initial 1-2 Syllables, CVVC

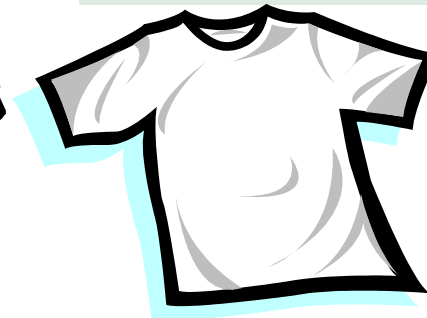
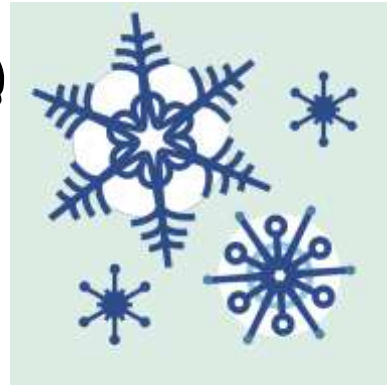
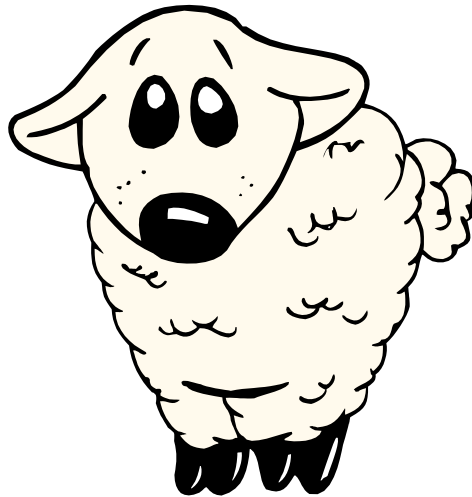


shook
shooting
sheer
sheep
shied



Review:
shoes
should
shirt

The **sheep shook** in the cold because his **shirt** was too **sheer**. I **shied** away from **shooting** him the message that he **should** put on his **shoes**.



Phoneme /sh/ Initial

1-2 Syllables



sheiks
shielded
sheeps
sheepherders
shining
sheeted
shirts
showered

The three **sheiks shielded** the **shining** sun
off of their **sheeted sheeps** as they
showered the **sheepherders** with **shirts**.

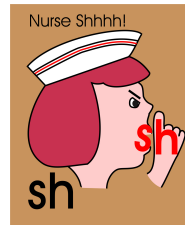


Phoneme /sh/ Initial

1-2 Syllables, Diphthong Vowels



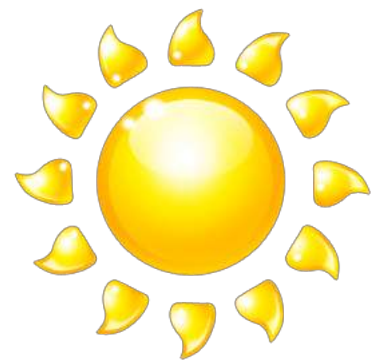
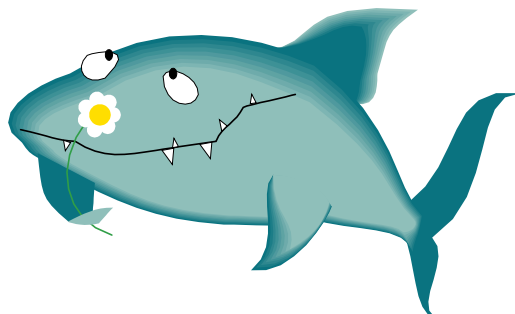
shouted
shoulder
showed
showered
shy



Review Words

shark
shore
short

The **shy shark** on the **short shore** **showed** me his **shoulder** as he **shouted** while the sun **showered** him with warmth.



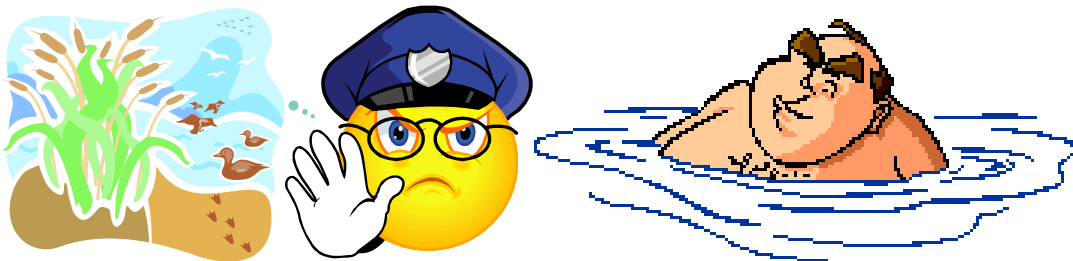
Phoneme /sh/ Initial

1-2 Syllables, R-colored



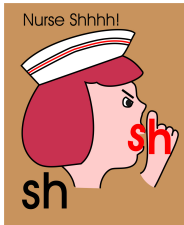
sharing
sure
sheriff
shirtless
should
shoreline
shortened

By the **shoreline** of the marsh, the **sheriff** made **sure** that he **shortened** the time that he was **sharing** with the **shirtless** man.



Phoneme /sh/ Initial

1-2 Syllables, R-Colored - #7

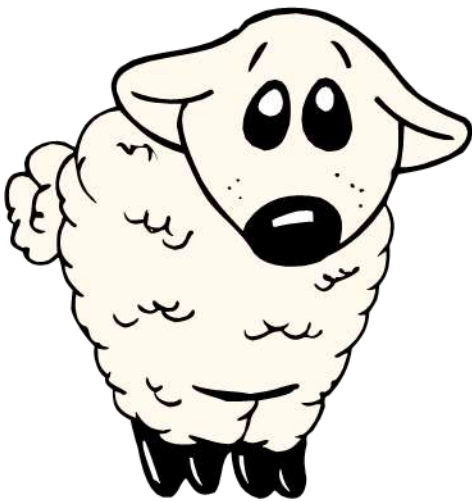


shores
shrank
shrew
shredded
shrine



sheep
shining

By the **shining shores** of the marsh, the **sheep shrank** as the **shrew shredded** his **shrine**.



Phoneme /sh/ Initial
1-2 Syllables, R-Colored - #8



shrimp
shrill
sheriff
shrieking
should
shriveled
shirt
shrub

The **sheriff should** have grabbed the **shrimp's shirt** when he started **shrieking** in a **shrill scream** about his **shriveled shrub**.

