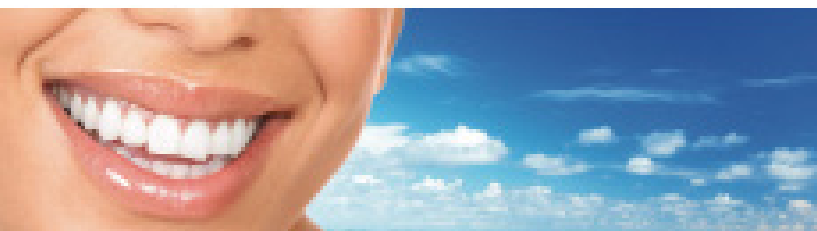




ROYAL

ROYAL DENTAL SUPPLY



116 NE 183 th Terrace Miami Garden, FL 33179

customer service

800 289 8180

305 651 6677 Fax 305 651 4466

www.royaldentalsupply.com



WHITE

CROSSTEX

NSK AMERICA
DENTISTRY

Zhermack
DENTAL LABORATORY

Let **ROYAL**
ROYAL DENTAL SUPPLY
open an
office
for you.

- Complete turnkey operation
- From supplies to equipment to office furniture, to design
- Leasing options available
- Call for information: 500.265.98180



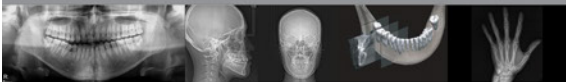


PAPAYA PLUS

New Concept/Multi-functional Imaging System



PANORAMIC • CEPHALOMETRIC • TOMOGRAPHY



VOLUX 21C

In need of a 3D imaging tool?
Look no further as Genoray's
3D CBCT will exceed your expectations

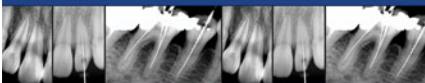
PANORAMIC • CEPHALOMETRIC • 3D CT



ZEN-PX2

The new era of Intra-Oral X-Ray System
is now in your hands

EXCELLENT IMAGE QUALITY



ELEGANT DESIGN • EASY TO USE

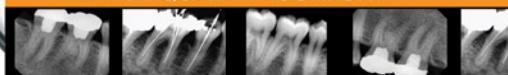


PortView

Intra-Oral Radiographic Sensor
Direct USB with Software



IMAGE QUALITY • CONFORT



DURABILITY • ERGONOMICS



Acrylics & Relines	4
Alloys	5
Anesthetics	6
Articulating	8
Burs	9
Cements & Liners	15
Cosmetics & Bondings	19
Crown Forms	22
Disposables	23
Endodontics	26
Equipment	30
Evacuation	35
Finishing	36
Handpieces	37
Impression Material	40
Infection Control	43
Instruments	46
Laboratory Products	53
Preventives	57
Retraction Material	59
X-Ray Products	60
Index	62

NOTE: Prices subject to change



Fast Tooth Acrylic. Signature
 All shades available.
 2 oz bottle **\$15.95**
 # 59 (225-9499) # 66 (225-9214)
 # 60 (225-0283) # 67 (225-9374)
 # 61 (225-0902) # 69 (225-9884)
 # 62 (225-2875) # 77 (225-1510)
 # 65 (225-9164) # 81 (225-4813)



Tooth Acrylic. Alike GC America
 Acrylic 170 g Shades available.
 #62 (333-0101) **\$62.99**
 #65 (333-0102)
 #66 (333-0103)
 Liquid 2 oz (333-0107) **\$22.99**



Tooth Acrylic. Jet Lang
 Acrylic. 1 lb Shades available.
 #62 (333-0104) **\$77.99**
 #65 (333-0105)
 #66 (333-0106)
 Liquid (acrylic resin) 8 oz (333-0108) **\$17.99**



Coe-Soft P/L Professional
 6 oz/Ea (433-2248) **\$124.99**

Signature-Line (Tissue Conditioner)
 Self-Curing Denture Reline Material. Contains Liquid 110 cc, Powder 100 gm, Primer 110 cc, Mixing Accessories & Instructions.
 Soft (433-2588) **\$59.95**
 Hard (433-2589) **\$59.95**



Cold-Cure. Signature
 Cold Cure Acrylic Kit contains 8 oz Cold Cure Liquid + 1 lb Powder.
 (077-9900) **\$44.95**
 8 oz Cold Cure Liquid (077-9908) **\$19.95**
 1 lb Powder (077-9901) **\$29.95**



Heat-Cure. Signature
 Heat Cure Acrylic Kit. Contains 8 oz Heat Cure Liquid + 1 lb Powder
 (077-9902) **\$44.95**
 8 oz Heat Cure Liquid (077-9903) **\$19.95**
 1 lb Powder (077-9904) **\$29.95**



Luxatemp Gun
 (390-9191) **\$119.95**



Impression Gun
 High Performance for 5 ml Cartridges. Includes 1:1 Slide.
 (301-9611) **\$99.95**



Luxatemp Plus
 Cartridge system. Refill pack. **\$159.95**
 A1 (390-8937)
 A2 (390-1628)
 A3.5 (390-9180)



Luxatemp Plus Mixing Tips
 Pkg/25 (390-9190) **\$34.99**



Signature-Temp
 Same as Luxatemp. 50 ml with tips.
 Buy 1 **\$89.95**
 Buy 3 **\$79.95**
 A1 (391-8937)
 A2 (391-1628)
 A3 (391-9180)



Mixing Tips for Crown & Bridge
 Bag/25 (391-9187) **\$29.95**



Mixing Tips. Pac-Dent
 Brown (391-9188) **\$25.95**



Amalgam Carriers

Stainless steel. Double end.

1-3 **\$14.95**
4-up **\$13.95**

Medium-Mini **(099-3141)**
Medium-Large **(099-3145)**
Medium-Jumbo **(099-3150)**
Large-Jumbo **(099-3155)**



Amalgam Squeeze Cloths. Signature

(360-0100) Maximum filtering action. Manufactured from unbleached, unprocessed cotton.

Box/500 **\$19.95**



Spherodon (Same as Tytin)

Amalgam Capsules

1 Spill Reg Set 50 **(224-0028)** **\$69.95**
2 Spill Reg Set 50 **(224-0029)** **\$79.95**
1 Spill Fast Set 50 **(224-0030)** **\$69.95**
2 Spill Fast Set 50 **(224-0031)** **\$79.95**

1 Spill Reg Set 500 **(224-0032)** **\$599.00**
2 Spill Reg Set 500 **(224-0033)** **\$699.00**
1 Spill Fast Set 500 **(224-0034)** **\$599.00**
2 Spill Fast Set 500 **(224-0035)** **\$699.00**



Dispersion Alloy Amalgam. Dentsply

1 Spill Reg Set 50 **(224-0018)** **\$89.95**
2 Spill Reg Set 50 **(224-0024)** **\$129.95**
1 Spill Fast Set 50 **(224-0021)** **\$79.95**
2 Spill Fast Set 50 **(224-0027)** **\$89.95**

1 Spill Reg Set 500 **(224-0016)** **\$799.95**
2 Spill Reg Set 500 **(224-0017)** **\$699.95**
1 Spill Fast Set 500 **(224-0019)** **\$599.95**
2 Spill Fast Set 500 **(224-0021)** **\$999.95**



SERVICE

✂ Handpiece Repair ✂

We repair all types
of handpieces:
Kavo, NSK & Midwest.

*We Will beat any Price!
Call today for pricing
1.800.289.8180*



ALLOYS

Aspirating Syringe. Signature

1-4
5-up

\$14.95
\$13.95

Type "A" (099-6222)



Type "C" (099-6333)



Carbocaine 3%
Same as Mepivacaine 3%. Box/50.
1:20,000 3% plain (567-0350)

Call for Price



Lidocaine 2%
Box/50.
1:100,000 (956-8481)
1:50,000 (956-8482)

Call for Price
Call for Price



Septocaine 4%
w/Epinephrine. Box/50.
1:100,000 (328-4404)
1:200,000 (328-4405)

Call for Price



Marcaine HCl 0.5%
w/Epinephrine. Box/50.
1:200,000 (328-4406)

Call for Price



Needles Sterilized - Plastic Hub / Metal Hub. Monojet
Disposable. Box/100.
Plastic or Metal

\$12.99

	PLASTIC	METAL
25 Gauge Short	(294-0159)	(294-9510)
25 Gauge Long	(294-9406)	(294-6120)
27 Gauge Short	(294-1613)	(294-1013)
27 Gauge Long	(294-0506)	(294-0318)
30 Gauge Short	(294-5141)	(294-3229)
30 Gauge Extra Short	(294-1753)	(294-1789)



Needles Sterilized - Plastic Hub. Signature

Less trauma to the tissue achieved through a triple-bevel needle, a polished & siliconized canula and excellent flexibility of the needle. High grade surgical stainless steel tubing to reduce risk of breakage. Bevel mark for optimal injection position. Compares to Monojet, Septodont, Sultan and other private label brands. Box/100.

1-9
10-39
40-up

\$8.95
\$8.50
\$7.99

27 Gauge Short (310-0027)
27 Gauge Long (310-9927)
30 Gauge Short (310-0030)
30 Gauge Extra Short (310-1130)



Sharp Containers

1 Qt (294-3315) \$4.95
4 Qt (087-5812) \$6.95
8 Qt (087-1078) \$7.95
16 Qt (087-0016) \$9.95



Topex Metered Spray. Sultan
(412-2658) Cherry 2 oz can.

1-4 \$29.95
5-up \$27.95



Metered Spray. Signature (087-1080) Topical Anesthetic.

1-4
5-up

\$19.95
\$17.95



Topical Anesthetic Spray. HurriCaine
20% Benzocaine Oral Anesthetic.

(412-2659)

\$34.95



Disposable Extension Tubes

Disposable extension tubes. Helps eliminate cross-contamination. For use with HurriCaine Topical Anesthetic Spray. Box/200.

(412-2660)

\$19.95



Revotek LC

Complete Kit B2 (333-0031)

\$75.99



Surgifoam 1cm x 1cm x 1cm
24 Pad (200-3470)

\$124.95



Topical Anesthetic Gel. Signature

Benzocaine 20%. 1 oz jar.

1-5

\$5.98

6-11

\$4.98

12-up

\$4.49

Cherry

(301-0013)

Mint

(301-0014)

Strawberry

(301-0016)

Bubble-gum

(301-0018)

Piña Colada

(301-0017)



Topex Topical. Sultan

1 oz jar. Benzocaine 20%.

1-5

\$8.50

6-up

\$7.99

Cherry

(412-5235)

Bubble-gum

(412-6828)

Mint

(412-1321)

Piña Colada

(412-4774)

Strawberry

(412-7938)

Banana

(412-6688)



Cetacaine Topical
30 g (412-2661)

\$59.99



Articulating Paper. Bausch

Blue Strips. Box/300.
BK 01 (333-0131)
BK 02 (333-0132)

\$17.99
\$17.99



Articulating Paper. Signature

Perfect marking even in wet field. Mark in any area with all materials.
Box/12 books. 60 microns.

1-5
6-up
Thin/Blue (199-0012)
Red/Blue (199-9191)

\$6.95
\$5.95

1-5
6-up
Thick/Blue (199-0013)

\$7.95
\$6.95



Articulating Paper Horseshoe

Horseshoe shape. Box/6 books, 12 sheets per book.

Red/blue (199-0006)

\$9.95
\$8.95



Articulating Paper Holder
(099-9944)

\$19.95



Fit Checker

Pack contains 1-80 g base, 1-20 g catalyst with retarder & mixing pads.

\$114.95

White, 1' work, 3.25 set time (433-4622)
Black, 2 minutes w/, 1' set time (433-6033)



Occlude-Pascal

Aerosol powder for articulating marking.

11 g
Red (215-5317)
Green (215-6127)

\$19.99



Mizzy Pressure Indicator Paste

1.25/Jr (333-0032)

\$33.95



Pressure Indicator Paste. Signature

Contents: 2 1/4 oz. (301-9595)

\$29.95



Pressure Indicator Paste Brushes

Miltex Pkg/12 (301-9596)

\$12.95

MIDWEST TYPE

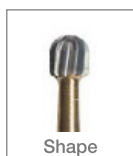


Trimming & Finishing Burs

For proper finishing and contouring.

12 Blade:

each \$5.95
100 per Pkg \$499.95




Round

		
Shape	7006	7008
Diameter (1/10mm)	1.8	2.3
Length (mm)	1.8	2.3
Blade Config.	12 Blade	12 Blade
FG	200-5193	200-4296
FG 100 Pk	300-5193	300-4296




Interproximal

	
Shape	7103
Diameter (1/10mm)	1.2
Length (mm)	3.4
Blade Config.	12 Blade
FG	200-1247
FG 100 Pk	300-1247


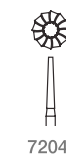

Taper T-Series

		
Shape	7114 T-1	7714 T-3
Diameter (mm)	0.9	1.4
Length (mm)	2.9	7.6
Blade Config.	12 Blade	12 Blade
FG	200-3979	200-1457
FG 100 Pk	300-3979	300-1457





Flame

		
Shape	7104	7106
Diameter (mm)	1.4	1.8
Length (mm)	3.2	3.6
Blade Config.	12 Blade	12 Blade
FG	200-1248	200-2681
FG 100 Pk	300-1248	300-2681

Taper Cone

		
Shape	7204	7205
Diameter (mm)	1.4	1.6
Length (mm)	8.8	8.8
Blade Config.	12 Blade	12 Blade
FG	200-8546	200-7244
FG 100 Pk	300-8546	300-7244

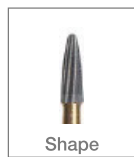


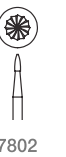
Egg

			
Shape	7404	7406	7408
Diameter (mm)	1.4	1.8	2.3
Length (mm)	3.0	3.4	3.6
Blade Config.	12 Blade	12 Blade	12 Blade
FG	200-9862	200-1440	200-3889
FG 100 Pk	300-9862	300-1440	300-3889

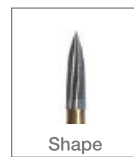


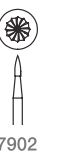
Long Taper

	
Shape	7642
Diameter (mm)	1.0
Length (mm)	5.7
Blade Config.	12 Blade
FG	200-6167
FG 100 Pk	300-6167

Bullet






			
Shape	7801	7802	7803
Diameter (mm)	0.9	1.0	1.2
Length (mm)	2.8	2.8	3.0
Blade Config.	12 Blade	12 Blade	12 Blade
FG	200-1458	200-7552	200-4966
FG 100 Pk	300-1458	300-7552	300-4966

Needle

			
Shape	7901	7902	7903
Diameter (mm)	0.9	1.0	1.2
Length (mm)	3.2	3.6	3.8
Blade Config.	12 Blade	12 Blade	12 Blade
FG	200-4766	200-5240	200-5454
FG 100 Pk	300-4766	300-5240	300-5454



Esthetic Finishing Carbide Burs

Taper



				
Shape	7610	7611	7612	7613
Diameter (mm)	0.9	1.0	1.4	1.4
Length (mm)	3.2	3.9	5.9	8.8
Blade Config.	12 Blade	12 Blade	12 Blade	12 Blade
FG	200-1478	200-8767	200-6113	200-6164
FG 100 Pk	300-1478	300-8767	300-6113	300-6164

Trimming & Finishing Carbide Burs



Interproximal

	
Shape	7606
MFG Ref.	H50
Size (1/10mm)	018
Length (mm)	6.0
Blade Config.	12 Blade
FG	200-4632
FG 100 Pk	300-4632

Flame

	
Shape	7108
FG	200-3978
FG 100 Pk	300-3978

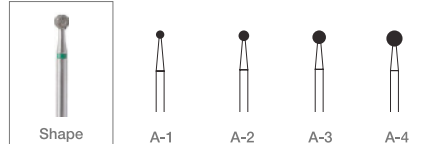
Taper Cone

	
Shape	7206
FG	200-3094
FG 100 Pk	300-3094

Galil Diamond Burs

Round

\$4.49 each

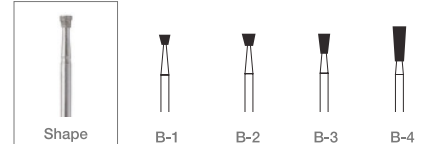


Shape

Fine Grit (Yellow)	333-0209	333-0211	333-0214
Medium Grit (Blue)	333-0208	333-0210	333-0212
Coarse Grit (Green)		333-0213	333-0216

Inverted Cone

\$4.49 each

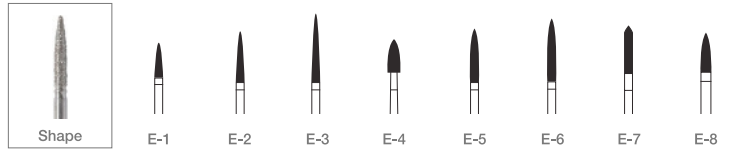


Shape

Fine Grit (Yellow)	333-0217	333-0219
Medium Grit (Blue)	333-0218	333-0220
Coarse Grit (Green)		333-0222

Flame

\$4.49 each

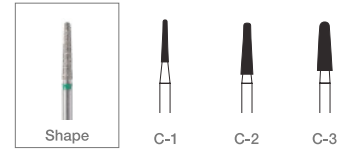


Shape

Extra Fine (White)	333-0224	333-0227	333-0231					
Fine Grit (Yellow)	333-0225	333-0228	333-0232	333-0235	333-0238	333-0241	333-0244	
Medium Grit (Blue)	333-0226	333-0229	333-0233	333-0236	333-0239	333-0242	333-0245	333-0247
Coarse Grit (Green)		333-0230	333-0234	333-0237	333-0240	333-0243	333-0246	

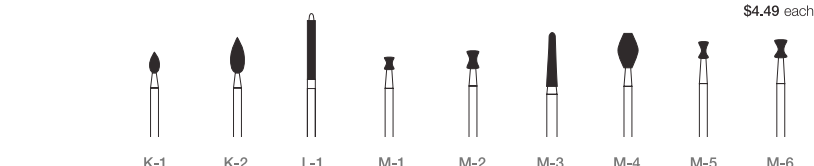
Taper Round End

\$4.49 each



Shape

Extra Fine (White)	333-0248	333-0252
Fine Grit (Yellow)	333-0249	333-0253
Medium Grit (Blue)	333-0250	333-0254
Coarse Grit (Green)	333-0251	333-0255

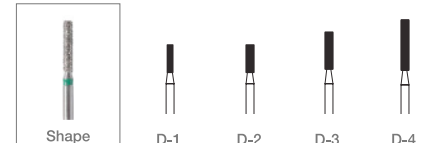


Shape

Extra Fine (White)	333-0262							
Fine Grit (Yellow)	333-0259	333-0263				333-0269	333-0272	
Medium Grit (Blue)	333-0260	333-0264	333-0266	333-0267	333-0268	333-0270	333-0273	333-0275
Coarse Grit (Green)	333-0261	333-0265				333-0271	333-0274	

Cylinder

\$4.49 each



Shape

Fine Grit (Yellow)			333-0281
Medium Grit (Blue)	333-0277	333-0279	333-0282
Coarse Grit (Green)	333-0278	333-0280	333-0283

Taper Flat End

\$4.49 each



Shape

Fine Grit (Yellow)	333-0286	333-0289
Medium Grit (Blue)	333-0287	333-0290
Coarse Grit (Green)	333-0288	333-0291

Taper Round End

\$4.49 each

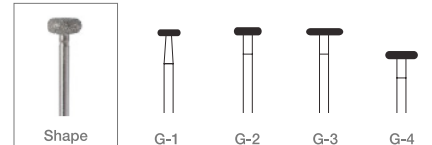


Shape

Fine Grit (Yellow)		
Medium Grit (Blue)	333-0292	333-0294
Coarse Grit (Green)	333-0293	333-0295

Wheel

\$4.49 each

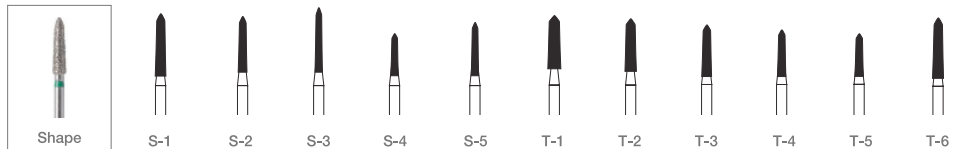


Shape

Medium Grit (Blue)	333-0296	333-0297	333-0298	333-0299
Coarse Grit (Green)				333-0300

Gingival Curettage Set

\$4.49 each



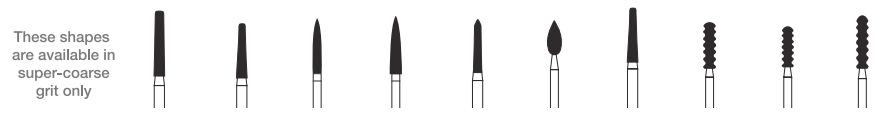
Shape

333-0301	333-0302	333-0303	333-0304	333-0305	333-0306	333-0307	333-0308	333-0309	333-0310	333-0311
----------	----------	----------	----------	----------	----------	----------	----------	----------	----------	----------

For Gross Reduction

\$5.49 each

These shapes are available in super-coarse grit only



FP2	CP2	EP5	EP6	SP5	KP2	MP3	BR2	BR3	BR4
333-0312	333-0313	333-0314	333-0315	333-0316	333-0317	333-0318	333-0319	333-0320	333-0321

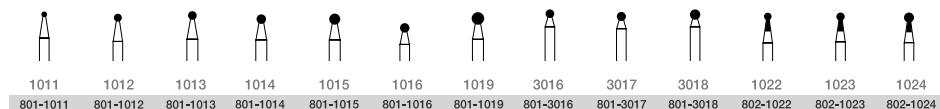
Signature Diamond Burs

Sterilized by gamma radiation.

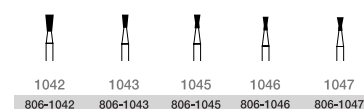
Available in Medium Grit.

1-49	\$2.95
50-99	\$1.95
100-up	\$1.49

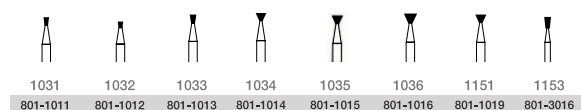
Round



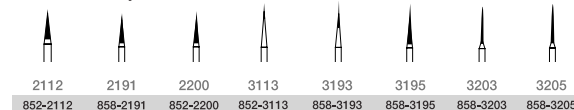
Double Cone



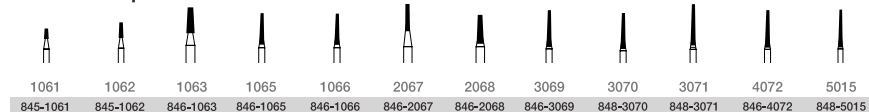
Inverted Cone



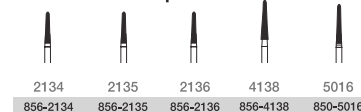
Pointed Taper



Flat End Taper



Round End Taper



Torpedo



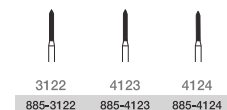
Cylinder Flame Shape End



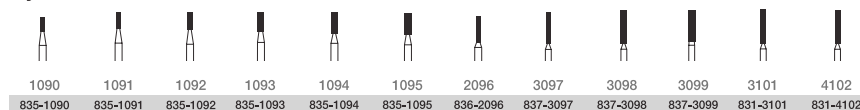
Cylinder Round End



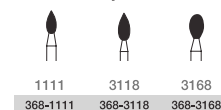
Cylinder Conical End



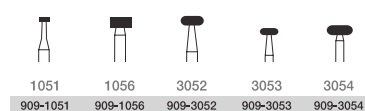
Cylinder



Round Tip Flame



Wheel



Multi Ring



Periodontics Short Neck



BURS

MIDWEST TYPE

Carbide Burs FG

Regular burs for high speed handpieces.

FG, FGSS & LA

10 per Pkg

\$15.95

4-up

\$14.95

100 per Pkg

\$149.95

3-up

\$144.95

FG: Friction Grip FGSS: Friction Grip Short Shank LA: Latch (Right Angle)

Round

Shape	1/4	1/2	1	2	3	4	5	6	7	8
Diameter (1/10mm)	0.5	0.6	0.8	1.0	1.2	1.4	1.6	1.8	2.1	2.3
Length (mm)	0.5	0.6	0.8	1.0	1.2	1.4	1.6	1.8	2.1	2.3
FG	772-1875	772-6087	772-7836	772-0546	772-8687	772-0679	772-2400	772-1774	772-1234	772-5357
100 Pk Bag	872-1875	872-6087	872-7836	872-0546	872-8687	872-0679	872-2400	872-1774	872-1234	872-5357
FGSS				773-0546		873-0679		872-1774		873-5357
100 Pk Bag				873-0546		873-0679		872-1774		873-5357
LA			772-7837	772-0542		772-0674	772-2401	772-1776		772-5358
10 Pk			872-7837	872-0542		872-0674	872-2401	872-1776		872-5358
100 Pk Bag										

Straight Flat End

Shape	56	57	58
Diameter (1/10mm)	0.9	1.0	1.2
Length (mm)	3.2	3.7	3.7
FG	772-7990	772-5196	772-2665
100 Pk Bag	872-7990	872-5196	872-2665
FGSS	773-7990	773-5196	
100 Pk Bag	873-7990	873-5196	

Inverted Cone

Shape	33 1/2	34	35	36	37
Diameter (1/10mm)	0.6	0.9	1.0	1.0	1.2
Length (mm)	0.4	4.9	3.7	4.9	4.9
FG	772-5021	772-5404	772-5624	772-0779	772-7112
10 Pk	872-5021	872-5404	872-5624	872-0779	872-7112
100 Pk Bag					

Taper Flat End

Shape	169	169-L	170	170-L	171	171-L
Diameter (1/10mm)	0.9	0.9	1.0	1.0	1.2	1.2
Length (mm)	3.2	4.9	3.7	4.9	3.7	4.9
FG	772-1880	772-2289	772-8084	772-9468	772-9106	772-1172
10 Pk	872-1880	872-2289	872-8084	872-9468	872-9106	872-1172
100 Pk Bag						

Amalgam Prep.

Shape	245	246
Diameter (1/10mm)	0.9	1.2
Length (mm)	2.7	3.7
FG	772-2268	772-9172
100 Pk Bag	872-2268	872-9172
FGSS	773-2268	
100 Pk Bag	873-2268	

All Purpose

Shape	256
Diameter (1/10mm)	0.9
Length (mm)	2.7
FG	772-0980
100 Pk Bag	872-0980

Pear

Shape	329	330	331	332
Diameter (1/10mm)	0.6	0.8	1.0	1.2
Length (mm)	1.6	1.6	1.6	1.6
FG	772-5803	772-3259	772-8852	772-3745
100 Pk Bag	872-5803	872-3259	872-8852	872-3745
FGSS	773-3259	773-8852		
100 Pk Bag	873-3259	873-8852		

Straight Flat End CrossCut

Shape	556	557	557-L	558
Diameter (1/10mm)	0.9	1.0	1.0	1.2
Length (mm)	3.2	3.7	4.9	3.7
FG	772-2221	772-3926	772-3956	772-2136
10 Pk	872-2221	872-3926	872-3956	872-2136
100 Pk Bag				
FGSS		773-3926	773-2136	
10 Pk		873-3926	873-2136	
100 Pk Bag				

Taper Flat End CrossCut

Shape	699	699-L	700	700-L	701	701-L	702	703
Diameter (1/10mm)	0.9	0.9	1.0	1.0	1.2	1.2	1.6	2.1
Length (mm)	3.2	4.9	3.7	4.9	3.7	4.9	4.1	4.6
FG	772-1834	772-6239	772-0135	772-0918	772-6730	772-5407	772-6121	772-0703
10 Pk	872-1834	872-6239	872-0135	872-0918	872-6730	872-5407	872-6121	872-0703
100 Pk Bag								

Straight Dome End

Shape	1156	1157	1158
Diameter (1/10mm)	0.9	1.0	1.2
Length (mm)	3.2	3.7	3.7
FG	772-0005	772-9265	772-8562
10 Pk	872-0005	872-9265	872-8562
100 Pk Bag			

Taper Dome End

Shape	1169	1170	1171
Diameter (1/10mm)	0.9	1.0	1.2
Length (mm)	3.2	3.7	3.7
FG	772-1705	772-2363	772-9439
10 Pk	872-1705	872-2363	872-9439
100 Pk Bag			

Straight Dome End Cross Cut

Shape	1156	1157
Diameter (1/10mm)	0.9	1.0
Length (mm)	3.2	3.7
FG	772-0450	772-8707
10 Pk	872-0450	872-8707
100 Pk Bag		

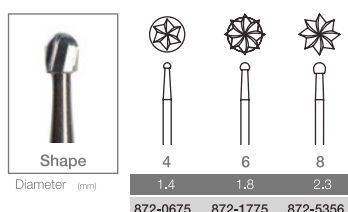
MIDWEST TYPE

\$2.95 each

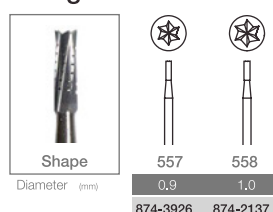
Surgical Carbide Burs

Ideal for cutting through bone and sectioning teeth.

Round



Straight Flat End Crosscut

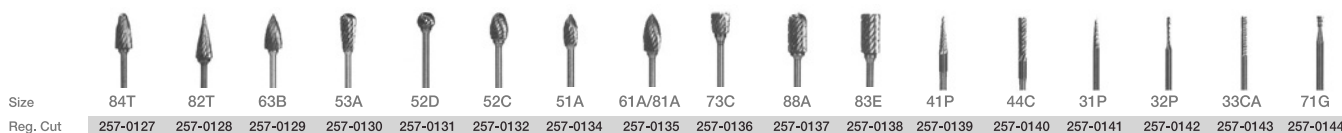


Carbide Laboratory Burs

\$11.95 each

All with 3/32" HP Shank.

Most popular for adjusting acrylic and metal. Available in Regular Cut.

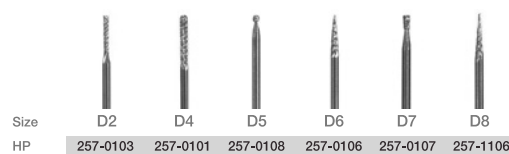


Diamond Cut Laboratory Carbide Burs

\$11.95 each

All with 3/32" HP Shank.

Used for fine adjustments of acrylic, porcelain and composites. They are very useful for trimming and finishing in hard to reach areas.



Lathe Carbide Burs

\$11.95 each

1/4" Shank.

For use in a lathe unit only.
NOT intended for use in a dental handpiece.



Burs Signature Gold

Titanium Nitride Coating.
3/32" Shaft.

\$10.95 each

Regular Cut. For adjusting acrylic and metal.







																	
Size	84T	82T	63B	53A	52D	52C	51A	61A/81A	73C	88A	83E	41P	44C	31P	32P	33CA	71G
Reg. Cut	257-5327	257-5328	257-5329	257-5330	257-5331	257-5332	257-5334	257-5335	257-5336	257-5337	257-5338	257-5339	257-5340	257-5341	257-5342	257-5343	257-5344

Diamond Cut Burs Signature Gold

All with 3/32" HP Shank.

\$10.95 each

Used for fine adjustments of acrylic, porcelain and composites.
They are very useful for trimming and finishing in hard to reach areas.

						
Size	D2	D4	D5	D6	D7	D8
HP	257-5303	257-5301	257-5308	257-5306	257-5307	257-5309

Lathe Carbide Burs

1/2" Shank.

\$24.95 each

For use in a lathe unit only.
NOT intended for use in a dental handpiece.

										
Size	A 1/2	B 1/2	C 1/2	D 1/2	E 1/2	A 3/8	B 3/8	C 3/8	D 3/8	E 3/8
Reg. Cut	257-5362	257-5363	257-5364	257-5365	257-5366	257-5355	257-05356	257-5357	257-5360	257-5359

Bur Cleaning Brush

Without handle (005-7430)
4-up

\$6.95
\$5.95



Mesh Bur and Diamond Holder

Autoclavable Stainless Steel.
(100-3082)

\$9.99



Large Round Bur Block Magnetic
(333-0115)

\$19.95



Small Round Bur Block Magnetic
(333-0116)

\$9.95



Bur Holder FG Clear
(333-7724)

\$5.95



Copal Varnish & Solvent. Signature
Prevent thermal and pulp shock. Easy to apply. Economical. Desensitizes. Flows smoothly and evenly. Superior adherence to tooth structure. Form a chemical; and physical barrier that seals tubules and protects pulp. **\$9.95**
1/2 oz Copal Varnish (310-2828)
1/2 oz Copal Solvent (310-6666)



Polycarboxylate Cement. Signature
High compressive strength. Neutral PH. Low solubility. Exceptionally mild to pulp and tissue. Adheres to dentin and enamel. Maintains high strength regardless of film thickness. Simple mixing, placement and cleanup. Optimum placement and setting conditions. Meets A.D.A. specification # 61. Used for permanent cementation of restoration and appliances. Cementation of orthodontic bands. Filling in deciduous teeth. A long term temporary filling. Compare to Durelon.
Kit: Powder & Liquid (000-1025)
1-3 **\$19.95**
4-up **\$17.95**
25 g Powder (090-1025) **\$14.95**
15 ml Liquid (090-2015) **\$11.95**



Durelon. 3M Espe
Triple Powder. (478-9405)
1-2 **\$69.95**
3-up **\$64.95**



Durelon. 3M Espe
Liquid 40 ml (478-9982) **\$89.95**



Durelon. 3M Espe
Carboxylate Cement.
12 Syringe Liquid (478-9265)
1-2 **\$99.95**
3-up **\$94.95**



Fynal. Dentsply Caulk
Complete Kit contains 32 g Powder & 15 ml Liquid. (322-0344) **\$84.95**
32 g Powder (322-1096) **\$67.95**
15 ml Liquid (322-3493) **\$37.95**



Dynamic Desensitizer. Signature
(202-1212) Hydroxyethyl Methacrylate, Tetrahydrofurfuryl Methacrylate & Water.
10 ml bottle.
1-3 **\$34.95**
4-up **\$29.95**



Gluma. Heraeus Kulzer
(765-7938) Easy one step procedure desensitize almost immediately, providing relief. 5 ml bottle.
1-2 **\$99.95**
3-up **\$94.95**



Lime-Lite Cavity Liner Syringe Kit
(878-0240) **\$38.95**



Dycal. Dentsply Caulk
Radiopaque Calcium Hydroxide. Dentin or Ivory shade.
1-2 **\$44.95**
3-up **\$41.95**
Dentin (322-1266)
Ivory (322-2269)



Mixing Wells
Box/200
2 holes (202-6343) **\$19.95**
4 holes (202-4112) **\$21.95**



Fuji II LC. GC America
Capsules. Box/50. Refill shade A2.
(433-6219) **\$189.95**



Fuji Plus. GC America
Contains 15 g bottle Powder, 7 ml bottle
Liquid, 6.5 ml bottle Conditioner, Mixing Pad &
Scoop. (433-2547)
1-2 **\$149.95**
3-up **\$147.95**
50 capsules pack (433-8269) **\$209.95**



Fuji II Kit. GC America
Glass ionomer restorative that features high
water resistance. 1:1 package. Contains: 15 g
Powder, 10 g Liquid & Accessories.
1-2 **\$182.95**
3-up **\$180.95**
#21 - Pale Yellow (333-0045)
#22 - Yellow Brown (333-0046)
#23 - Dark Grey (333-0047)



FUJI IX A2. GC America
Fast setting version of Fuji IX.
Capsule Refills. Box/50.
(333-0048) **\$209.95**



Fuji I. GC America
(433-5075) Contains 35 g Powder, 25 g
Liquid, Spatula & Mixing Pad. Shade A2.
1-2 **\$114.95**
3-up **\$109.95**



Glass Ionomer Cement. Signature
Economical. Use for permanent cementation
of inlays, onlays, crowns, bridges, facings and
orthodontic bands. Compare to Ketac!
18 g Powder, 17.5 ml Liquid, Measuring
Scoop, Mixing Pad and Instructions for use.
(090-5500)
1-2 **\$39.95**
3-up **\$34.95**



Ketac Cement. Espe America
Each pack contains. 12 ml Liquid, 33 g
Powder.
Single Pack (278-3060) **\$99.95**
Triple Pack (278-2455) **\$279.95**
Applicap (100 caps) **\$199.95**
(278-6439) **\$199.95**
Glass Ionomer Cement in capsules form.



Ketac Silver Applicap. Espe America
Precapsulated Glass Ionomer. Silver
Restorative. 50 capsules
(478-9652) **\$239.95**



Rely X Intro Kit. 3M Espe
(478-9999) **\$139.95**



Rely X Luting Plus. 3M Espe
Pkg/2 (479-0001) **\$229.95**



FujiCEM Automix. GC America
(479-0000) **\$239.95**



Rely X Unicem. 3M Espe
Aplicap Refills, Box/50 **\$309.95**
A2 Universal (478-3757)
Translucent (478-8676)



Rely X Automix. 3M Espe
Contains: 1 - 8,5 g Base Paste/Catalyst Paste
15 Automix Tips & 5 Automix Endo Tips.
(479-0002) **\$179.99**



Rely X Unicem 2 in Clicker Dispenser.
3M Espe
Self-adhesive Universal Resin Cement. No
need to pretreat etching, priming, or bonding.
1 - 11 g
A2 (479-0003) **\$229.99**



Cement Syringe Paste. Signature
Compares to FujiCEM. Dual Barrel Syringe Paste/Paste. Glass Ionomer Cavity Liner. Automix for orthodontic bands and dental prostheses. 8 g and 6 tips. (090-5501) **\$59.95**



G-Cem Self Adhesive Luting Cement
Fast, One Step application process. Capsule Starter Kit (333-0033) **\$274.99**
Capsule Refills. Box/50. (333-2546) **\$309.99**
Handheld Syringe Refills (333-2547) **\$139.99**



Cem Tips. Signature
(090-5502) Pkg/25 **\$31.95**



IRM Caps. Dentsply
(322-0241) Box/50
1-3 **\$109.95**
4-up **\$107.95**



IRM. Dentsply Caulk
(322-1135)
1-3 **\$59.95**
4-up **\$57.95**



Miracle Mix. GC America
(433-5728) 15 g Powder, 10 g Liquid & 17 g Alloys Powder.
1-2 **\$209.95**
3-up **\$207.95**
(433-6599) Capsules. Box/50 **\$249.95**



GC Metal Strips
Ideal for trimming and finishing interproximal surfaces. Thin and flexible. Will not stretch or break. Autoclavable. **\$11.95**

Narrow 2.5 mm (433-3549)
Medium 3.18 mm (433-4155)
Wide 4.00 mm (433-4247)



Polishing Strips
Open center preserves inter proximal tooth contact. Equally effective wet or dry. Used by hygienists for cleaning. Aluminum oxide grit provides lasting strength. Used for polishing inter proximal of composite & amalgam restorations. Box/100 **\$11.95**

Narrow 2.5 mm (164-1116)
Medium 3.18 mm (164-0019)
Wide 4.00 mm (164-1006)



Sof-Lex Finishing Strips 1954n. 3M Espe
(778-0101) **\$36.99**



Polishing Strips (metal). Signature
For polishing restorations and reducing tooth structure in orthodontic treatment. **\$11.95**
Bag/12
One side 4 mm (233-0004)
One side 6 mm (233-0006)



Seal-G. Signature
(146-0032) Pre-mixed temporary filling & cavit seal. Hardens rapidly when exposed to saliva. Adheres very well to moist or dry cavity walls. Form a perfect seal for medications. Withstand mastication. Not readily soluble by oral fluids. Not affected by dental medications. Compare to Cavit G!. Large Size 38 g **\$8.95**
Buy 4 **\$7.95**



Cavit-G. 3M Espe
(478-4404) 28 g/Jar **\$17.95**



Zoe B&T. Dentsply Caulk
Zinc-Oxide Eugenol Base and Temporary Filling material. Complete Set contains 25 g Powder & 14 ml Liquid (322-3842) **\$69.95**
14 ml Liquid (322-4338) **\$34.95**
25 g Powder (322-2245) **\$44.95**



Temp Bond. Unidose
(223-8468) **\$44.99**



Temp Bond. Kerr
Complete Kit. Base & Accelerator. 1-3 **\$39.95**
4-up **\$37.95**
With Eugenol (223-0672)



Temp Bond. Signature
Dual Cylinder Syringe 7 g Base & 7 g 50 Mix Pads. **\$21.95**
With Eugenol (223-0676)
Non Eugenol (223-0674)



Vitrebond Kit. 3M Espe
9 g Liner/Base Powder, 5.5 ml Base/Liquid, Mixing Spoon & Pads. **\$199.95**
(877-2647)
5.5 ml Base/Liquid **\$99.95**
(877-3947)
9 g Liner/Base Powder **\$99.95**
(877-3504)



Vitrebond Plus. 3M Espe
1, 10 g Clicker **\$189.95**
(877-2648)
2, 10 g Clicker **\$319.95**
(877-2649)



Core Buildup Material
14 g Base & 14 g Catalyst
Natural (877-2648) **\$ 59.95**
Blue (200-5344) **\$ 57.95**



Orange Solvent
(200-4865) **\$17.95**



Zinc Oxide (USP). Signature
Chemically Pure.
1 lb bottle (301-7801) **\$14.95**



Zinc Phosphate Cement. Signature
(091-0029) Used for cementation of inlays, onlays, crowns, fixed bridge work and orthodontic Bands. High-Strength base in a large cavity preparation. Temporary filling material. Compare to Flecks!!
Kit Powder & Liquid. **\$14.95**
4-up **\$12.95**
29 g Light Yellow Powder (090-0014) **\$9.95**
15 ml Liquid (090-0015) **\$9.95**



Eugenol (USP). Signature
Chemically Pure. Used with Zinc Oxide as temporary cement. Effective analgesic antiseptic for irritated pulp.
1 oz (301-8301) **\$11.95**



Mixing Pads Poly
3 x 3 (302-1110) **\$2.95**
6 x 6 (302-1111) **\$5.95**

Intermediate Restorative Material. Signature
(090-1515) **\$19.95**



Whitening System. Signature (202-5612) Advance Carbamide Peroxide-based Whitening System. Offers outstanding results in just 2 weeks of use. Buffered gel formula and buffered pH maximize patient comfort. 22% Unflavored. 4 - 3 ml syringes & 2 trays. **\$19.95**



Syringe Etch Gel. Signature (090-4000) 4 - 1.2 ml Syringes & 8 Tips. 1-5 **\$14.95**
6-up **\$12.95**



Acid Etching Gel. Signature
High quality, non drying, medium viscosity gel. Does not run, stays in place. Large comfortable to use syringe for easy, accurate placement of the gel, even in distal and lingual composite preparation. Blue color for easy differentiation. 37 % Phosphoric Acid. Large size 12 ml Syringe w/extra Tips **(090-3612)** **\$8.95**
1-11 **\$7.95**
12- up **\$7.95**
Jumbo Syringe 60 g **(090-0060)** **\$27.95**



Pre-bent Needles/Etch Tips
Bag/100 **\$14.95**
(090-4020) 20 gauge Black
(090-4021) 25 gauge Blue
(090-4022) 22 gauge Grey
Pink & Yellow also available



Brush Tips & Handles. Signature
Handles & Brushes for dispensing medicaments, acrylic or restoratives material to the teeth.
Bag/100 **(047-0102)** **\$9.95**
Handle **(890-7721)** **\$4.95**
Brush Kit: 2 Handles + 100 Brushes **(890-7722)** **\$12.95**



Magic Brushes. Signature
Brush Tip Applicator. Compare as Microbrush. Pkg/100 **\$ 5.99**

	REG	FINE	X-FINE
Blue	(971-0100)	(971-0101)	(971-0102)
Yellow	(971-0200)	(971-0201)	(971-0202)
Pink	(971-0300)	(971-0301)	(971-0302)
Green	(971-0400)	(971-0401)	(971-0402)

PKG/400 **\$21.95**

	REG	FINE	X-FINE
Blue	(971-4100)	(971-4101)	(971-4102)
Yellow	(971-4200)	(971-4201)	(971-4202)
Pink	(971-4300)	(971-4301)	(971-4302)
Green	(971-4400)	(971-4401)	(971-4402)
Assorted	(971-4500)	(971-4501)	(971-4502)



Microbrush Applicators
Applicators with nonlinting, nonabsorbent fibers. Pkg/100 **\$8.50**
Specify :
Blue **(333-0050)** Green **(333-0051)**
Purple **(333-0052)** Peach **(333-0053)**
Regular size-assorted, Pkg/400
(100 of each color) **(333-0054)** **\$31.99**
Fine size, Pkg/400 **\$31.99**
Specify:
Pink **(333-0055)** Yellow **(333-0056)**
Assorted **(333-0057)**
Super-fine size, Pck/400 White **(333-0058)**



G-Bond
Contains: 1-5 ml bottle, 50 Microtips, 1 Microtip Handle & 1 Dispensing Dish. **(333-0035)** **\$146.95**



Prisma Gloss
4 g Syringe. Regular. **(444-0095)** **\$59.95**



Diamond Polishing Paste
2 g Syringe. **(971-0038)** **\$19.95**
4-up **\$18.95**



Disposable Brush Applicators
(971-0001) Pkg/144 **\$12.95**



Charisma. Heraeus Kulzer
4 g Syringe Refill Light Cure **\$49.95**
A1 **(752-1102)**
A2 **(752-1103)**
A3 **(752-1104)**



Clear Celluloid Strip. Signature
Extremely thin, 0.002 Gauge. Resists fracture. Gives a bright finish to the filling. Used as a separator matrix between teeth, composites & amalgams. Bag/1000 **(047-1000)** **\$9.95**



S-Bond Plus. Signature
 One step bond. Zero post-operative sensitivity. Unmatched bond strength. Kit contains: 7 ml Bottle, 1 Handle, 1 Bag of 25 Brushes and 4 Mixing Wells. (146-3007)
 1-2 \$59.95
 3-up \$54.95

Refill 7 ml Bottle (146-1107)
 1-2 \$49.95
 3-up \$44.95



Gluma Comfort Bond & Desensitizer
 Bonding agent and Gluma Desensitizer combined to prevent hypersensitivity. Single pack 4 ml. (765-7442) \$119.95



Prompt L-Pop. 3M Espe
 (478-4781) Giant Pack. \$199.95



Optibond Solo Plus. Kerr
 (223-5690) 5 ml bottle adhesive.
 1-3 \$99.95
 4-up \$94.95



Optibond Solo Unidose. Kerr
 (223-0924) Contains 100 Optibond Solo Plus Unidose.
 1-3 \$279.95
 4-up \$269.95



Prime & Bond NT. Dentsply Caulk
 4.5 ml Light Cure Bonding Agent Kit. Contains Brush Tips, Wells & Instructions.
 Intro 1 BTL Kit (122-0421) \$119.00
 Refill 2 BTL Kit (222-0421) \$219.95
Super Special!
 Buy 4 refill bottles \$199.95 each



Duration SE Bond. Signature
 Simple and easy to use, self-etching, light cured bonding agent. (821-0039) \$69.95



Clearfil SE Bond
 Simple and easy to use, Self-Etching, Light Cured Bonding Agent. Complete kit contains 1- 5 ml Bond & 1 -6 ml Primer Dispenser Case, Brush Holder, Mixing Dish, Light Blocking Plate & Brush Tips. (333-0202) \$179.95



Scotchbond. 3M Espe
 3M Multipurpose 8 ml Bottle Refill. Primer (877-4686) \$99.95
 Adhesive (877-6550) \$99.95



Single Bond. 3M Espe
 (877-5578) Single bond adhesive refill. 6 ml bottle. 1-3 \$99.95
 4-up \$89.95



i-Bond Self Etch. Heraeus
 All-in-one Bonding Agent. Refill 4 ml Bottle (765-4750) \$99.95
 Value Pack (765-4751) \$179.95
 Contains: 3 - 4 ml bottles.



Orthodontic Resin Bonding. Signature
 Easy to use. No mixing required. Available in individual syringes. Bonds both metal and plastic brackets. No flotation of brackets. Tacky viscosity. Hypo-allergenic. No refrigeration required. High stain resistance. No waste. High bond strength. Used to attach orthodontic brackets to teeth. Kit contents: 5 g Adhesive in Syringe, 5 ml Primer, 3 ml Etchant Liquid, Long Brushes, Mixing Pad, Spatula & Instruction. (090-0555) \$49.95



Flowable Composite. Signature
 4 - 2 g Syringe Refill with Tips. \$36.95
 A1 (201-9306) B1 (201-7386)
 A2 (201-6773) B2 (201-7387)
 A3 (201-5337) B3 (201-7388)
 A3.5 (201-2772) C3 (201-3784)



Revolution Formula. Kerr
 Flowable, Fluoride Releasing Light-Cured Hybrid Composite. Refill Kits 4-1 g Syringes & 20 Tips \$59.95
 A1 (223-8809) B2 (223-6520)
 A2 (223-1948) B3 (223-4770)
 A3 (223-8190) C1 (223-8038)
 A3.5 (223-2990) C2 (223-6944)
 A4 (223-4253) C3 (223-6278)
 B1 (223-3727) C4 (223-0134)



Herculite. Kerr

5 g Syringe Refill Light Cure Enamel.

All shades 1-3

4-up			\$69.95
A1	(223-5096)	B4	(223-5171)
A2	(223-8451)	C1	(223-5512)
A3	(223-6088)	C2	(223-7678)
A3.5	(223-6432)	C3	(223-8000)
A4	(223-4757)	C4	(223-6112)
B1	(223-6767)	D2	(223-8275)
B2	(223-5809)	D3	(223-8565)
B3	(223-7076)	D4	(223-6395)

25 g Unidose Light Cure. 20 Computes.

1-3			\$79.95
4-up			\$74.95
A1	(223-7500)	B4	(223-2905)
A2	(223-8342)	C1	(223-8349)
A3	(223-8508)	C2	(223-1027)
A3.5	(223-8976)	C3	(223-1330)
A4	(223-7591)	C4	(223-4132)
B1	(223-9094)	D2	(223-5071)
B2	(223-8187)	D3	(223-1929)
B3	(223-0603)	D4	(223-4447)



Compute Dispensing Gun

(047-0000) For most Unidose Tips. **\$49.95**

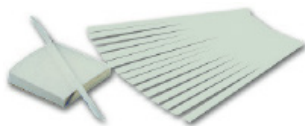


Composite Restorative Material. Signature

"Paste-Paste Composite"

14/14 g (28 g) Kit - Bonding

CONTENTS: 14 g Base, 14 g Catalyst, Mixing Pad, & Spatulas (090-0028) **\$49.95**



Mixing Spatulas for Composite
(090-0100) Pkg/100 **\$11.95**



Hybrid Light Cure Composite Light Cure Restorative Material. Signature

Complete Kit. Contents: 4.5 g Paste Light, (Vita # A1/Bioform # 59) 4.5 g Paste Light Yellow, (Vita #B4/Bioform #55) 4.5g Paste Light Gray, (Vita # C2/Bioform # 95) 4.5g Paste Gray Brown, (Vita # C4/Bioform # 82) 9 ml Acid Etching, 3 ml Bonding, Mixing Pad, Brushes, Handle, Shade Guide & Instructions (090-1444) **\$99.95**

Micro-Hybrid Composite Syringe Refill 4.5 g

A1	(090-0045)	B3	(090-1145)
A2	(090-0042)	B4	(090-1245)
A3	(090-0043)	C1	(090-1345)
A3.5	(090-0435)	C2	(090-1445)
B1	(090-1046)	D4	(090-1544)
B2	(090-1045)		

Micro-Hybrid Compute Compute Refills 15-3 g

A1	(090-1044)	B3	(090-0046)
A2	(090-1042)	B4	(090-2145)
A3	(090-1043)	C1	(090-3145)
A3.5	(090-1435)	C2	(090-4145)
B2	(090-0145)	D4	(090-5144)



TPH3. Dentsply Caulk

1-3	\$79.95
4-up	\$77.95

Compute 20 count

A1	(322-6667)
A2	(322-4896)
A3	(322-5782)
A3.5	(322-9058)
A4	(322-7844)
B1	(322-6123)
B2	(322-6340)
B3	(322-6419)
C1	(322-1117)
C2	(322-6639)

Syringe

A1	(322-6666)
A2	(322-4895)
A3	(322-5781)
A3.5	(322-9057)
A4	(322-7843)
B1	(322-6122)
B2	(322-6339)
B3	(322-6418)
C1	(322-1116)
C2	(322-6638)



Z 100. 3M

4 g Syringe Refill Light Cure **\$69.95**

A1	(877-4396)
A2	(877-4367)
A3	(877-2489)
A3.5	(877-1077)
A4	(877-1214)
B2	(877-1520)
C2	(877-2849)



Z 250. Espe America

Universal Microhybrid Restorative Material

Syringe Refill 4 g. 1-4 **\$69.99**

5-up	\$67.99
A1	(877-8200)
A2	(877-2694)
A3	(877-3349)
A 3.5	(877-5748)
A4	(877-3214)
B1	(877-4782)
B2	(877-2249)
C2	(877-6612)

Capsules Refill. Box/20

1-4	\$89.95
5-up	\$87.95
A1	(877-3745)
A2	(877-9502)
A3	(877-8413)
A3.5	(877-3258)
B1	(877-4038)
B2	(877-2378)
C2	(877-1371)



Light Cure Orthodontic Adhesive

Content: 3 g Light Cure Primer, 6 g Etchant, 5 g Adhesive Paste, Accessories.

(090-1453) **\$69.95**



Polycarbonate Temporary Crowns
Signature. Accurate sizing. Universal numbering. Non toxic. High impact. Flexible. Easy to trim. Universal shade. New shade more natural! Same as 3M.

Box-kit 180 (091-0180) **\$99.95**
Box-kit 360 (091-0360) **\$209.95**
Box of 5. 1-11 **\$4.99**
12-up **\$3.99**

Upper Right Central	Upper Left Central
100 (200-0059)	15 (200-7505)
101 (200-0188)	16 (200-3926)
10 (200-0586)	17 (200-2516)
11 (200-1868)	18 (200-8020)
12 (200-5954)	19 (200-5567)
13 (200-8980)	102 (200-0599)
14 (200-8628)	103 (200-1909)

Upper Right Lateral	Upper Left Lateral
2 (200-0184)	25 (200-7601)
20 (200-7747)	26 (200-4232)
21 (200-4697)	27 (200-3491)
22 (200-4973)	28 (200-1129)
23 (200-5853)	29 (200-3598)
24 (200-8658)	200 (200-6085)

Right Cuspid (Upper & Lower)	Left Cuspid (Upper & Lower)
300 (200-9398)	35 (200-6476)
301 (200-9960)	36 (200-0645)
30 (200-1470)	37 (200-2056)
31 (200-4686)	38 (200-6554)
32 (200-4938)	39 (200-0894)
33 (200-5742)	302 (200-0061)
34 (200-8305)	303 (200-0194)

1st Bicuspid	2nd Bicuspid
40 (200-2849)	50 (200-2950)
41 (200-9081)	51 (200-9403)
42 (200-8950)	52 (200-9976)
43 (200-8532)	53 (200-1804)
44 (200-7199)	54 (200-5750)

Lower Anterior Long	Lower Anterior Short
60 (200-8330)	65 (200-9144)
61 (200-6556)	66 (200-9150)
62 (200-0900)	67 (200-9169)
63 (200-2868)	68 (200-9230)
64 (200-9142)	69 (200-9425)



Clear Crown Forms
Anterior 60 piece set (200-0373) **\$89.95**
Posterior 60 piece set (200-1189) **\$89.95**

Iso-Form Temporary Crowns



5 per box **\$22.99**
10 boxes **\$21.99**

1st UPPER RIGHT	1st UPPER LEFT	1st LOWER RIGHT	1st LOWER LEFT	2nd UPPER RIGHT	2nd UPPER LEFT	2nd LOWER RIGHT	2nd LOWER LEFT
U-60 (878-0001)	U-61 (878-0002)	U-60 (878-0011)	U-61 (878-00012)	U-60 (878-0021)	U-61 (878-0022)	U-60 (878-0031)	U-61 (878-0032)
U-62 (878-0003)	U-63 (878-0004)	U-62 (878-0013)	U-63 (878-0014)	U-62 (878-0023)	U-63 (878-0024)	U-62 (878-0033)	U-63 (878-0034)
U-64 (878-0005)	U-65 (878-0006)	U-64 (878-0015)	U-65 (878-0016)	U-64 (878-0025)	U-65 (878-0026)	U-64 (878-0035)	U-65 (878-0036)
U-66 (878-0007)	U-67 (878-0008)	U-66 (878-0017)	U-67 (878-0018)	U-66 (878-0027)	U-67 (878-0028)	U-66 (878-0037)	U-67 (878-0038)
U-68 (878-0009)	U-69 (878-0010)	U-68 (878-0019)	U-69 (878-0020)	U-68 (878-0029)	U-69 (878-0030)	U-68 (878-0039)	U-69 (878-0040)

Nichro Stainless Steel Crowns



5 per box **\$39.99**
10 boxes **\$38.99**

Upper First & Second Permanent Molars		Lower First Permanent Molars		Upper First Primary Molars		Upper Second Primary Molars		Lower First Primary Molars		Lower Second Primary Molars	
LEFT	RIGHT	LEFT	RIGHT	LEFT	RIGHT	LEFT	RIGHT	LEFT	RIGHT	LEFT	RIGHT
6-UL-2 (878-0041)	6-UR-2 (878-0047)	6-LL-2 (878-0053)	6-LR-2 (878-0059)	D-UL-2 (878-0065)	D-UR-2 (878-0071)	E-UL-2 (878-0077)	E-UR-2 (878-0083)	D-LL-2 (878-0089)	D-LR-2 (878-0095)	E-LL-2 (878-0101)	E-LR-2 (878-0107)
6-UL-3 (878-0042)	6-UR-3 (878-0048)	6-LL-3 (878-0054)	6-LR-3 (878-0060)	D-UL-3 (878-0066)	D-UR-3 (878-0072)	E-UL-3 (878-0078)	E-UR-3 (878-0084)	D-LL-3 (878-0090)	D-LR-3 (878-0096)	E-LL-3 (878-0102)	E-LR-3 (878-0108)
6-UL-4 (878-0043)	6-UR-4 (878-0049)	6-LL-4 (878-0055)	6-LR-4 (878-0061)	D-UL-4 (878-0067)	D-UR-4 (878-0073)	E-UL-4 (878-0079)	E-UR-4 (878-0085)	D-LL-4 (878-0091)	D-LR-4 (878-0097)	E-LL-4 (878-0103)	E-LR-4 (878-0109)
6-UL-5 (878-0044)	6-UR-5 (878-0050)	6-LL-5 (878-0056)	6-LR-5 (878-0062)	D-UL-5 (878-0068)	D-UR-5 (878-0074)	E-UL-5 (878-0080)	E-UR-5 (878-0086)	D-LL-5 (878-0092)	D-LR-5 (878-0098)	E-LL-5 (878-0104)	E-LR-5 (878-0110)
6-UL-6 (878-0045)	6-UR-6 (878-0051)	6-LL-6 (878-0057)	6-LR-6 (878-0063)	D-UL-6 (878-0069)	D-UR-6 (878-0075)	E-UL-6 (878-0081)	E-UR-6 (878-0087)	D-LL-6 (878-0093)	D-LR-6 (878-0099)	E-LL-6 (878-0105)	E-LR-6 (878-0111)
6-UL-7 (878-0046)	6-UR-7 (878-0052)	6-LL-7 (878-0058)	6-LR-7 (878-0064)	D-UL-7 (878-0070)	D-UR-7 (878-0076)	E-UL-7 (878-0082)	E-UR-7 (878-0088)	D-LL-7 (878-0094)	D-LR-7 (878-0100)	E-LL-7 (878-0106)	E-LR-7 (878-0112)

**Bib Clips. Signature**

Napkin Holder with "Tight Grip" Alligator Clips.
11" Chain

\$2.50

Black	(001-6666)
Blue	(001-5555)
Red	(001-3333)
White	(001-1111)
Yellow	(001-7777)
Green	(001-8888)

**Bibs**

2 ply paper. 1 ply poly.
13 x 19. Box/500.

1-4	\$24.95
5-up	\$23.95
Blue	(971-0035)
Mauve	(971-0036)
White	(971-0037)
Beige	(971-0039)
Green	(971-0055)

**C-Fold Towels**

Case/2400. (627-0010)

1-3	\$34.95
4-up	\$32.95



C-Fold Towels. Windsoft Premium
Pkg/2400 (333-0100) **\$44.95**

**Wood Wedges. Signature**

The best wood wedges your money can buy!
Guaranteed!

Bag /100	\$11.95
Extra small, pink	(385-5011)
Small, blue	(385-5012)
Medium, green	(385-5013)
Large, yellow	(385-5015)
Extra large, white	(385-5017)
Bag/500	\$29.95
Extra small, pink	(385-5511)
Small, blue	(385-5512)
Medium, green	(385-5513)
Large, yellow	(385-5515)
Extra large, white	(385-5517)
Assorted Bag/500	(385-5010)

**Cotton Roll Dispenser**

Plastic Dispenser designated for easy loading of cotton rolls. Bottom slides out to dispense up to 3 rolls at a time. Good for aseptic procedures. Heavy duty nonskid base.

\$14.95

Green	(221-1412)
White	(221-1421)
Blue	(221-1466)
Yellow	(221-1477)
Beige	(221-1488)
Gray	(221-1433)

**Cotton Roll Holder. Signature**

Autoclavable Cotton Roll Holder with Lid. Stainless pins embedded in weighted bottom hold cotton roll in neat ward position.

\$19.95

White	(221-1426)
Blue	(221-1430)
Yellow	(221-1440)
Beige	(221-1450)

**Dri-Angles**

Replacement and improvement over the Cotton Roll. Box/400.

Plain, Small (333-0111)	\$11.99
Plain, Large (333-0112)	\$11.99
With Silver, Small (333-0113)	\$15.99
With Silver, Large (333-0114)	\$15.99

**Gauze Dispenser. Signature**

Autoclavable Container holds 32 - 2" x 2" Gauze Pad. The spring action releases pads for one time use. Weighted bottom.

\$19.95

White	(221-1431)
Blue	(221-1410)
Yellow	(221-1411)
Beige	(221-1424)

**Denture Boxes**

Assorted Colors. Pkg/12.
(431-0120)

\$11.95**Retainer Boxes**

Assorted Colors. Pkg/12
(431-0121)

\$11.95**Cotton Rolls**

(435-1010) High Absorbent. Non Sterile, Non Linting, Long-Fiber, Virgin Cotton. Machine Rolled. # 2 (size 1 1/2 x 3/8) Box/2000. Same as Crosstex!

1-2	\$14.95
3-up	\$13.95

**Cotton Tip Applicators. Signature**

Wooden Shaft with Cotton swab end. Box/1000. Same as Vista.

3" (431-1003)	\$6.95
1-3	\$6.95
4-up	\$5.95
6" (431-1006)	\$7.95
1-3	\$7.95
4-up	\$6.95

**Cups**

Clear. 5 oz. Box/1000 **\$24.95**
Blue (277-1111)
Mauve (277-1112)
White (277-1113)

**Solo Evacuator Cups**

(333-0036) Box/250 **\$19.99**

**Evacuator Tips. Signature**

(777-1142) Softer end for patient comfort, opaque plastic Disposable. Vented one side only.
Box/100.1-19 **\$4.95**
20-39 **\$3.95**
40-up **\$2.99**



Finger Cots
Rubber. Box/144. **\$6.95**
Small (735-6667)
Medium (200-6414)
Large (200-0448)



Gauze. Signature
(435-2208) Cotton Filled. 100% cotton gauze sponges with maximum absorbency cotton inner liner.
2" x 2" 8 Ply. 1-2 **\$34.95**
3-up **\$33.95**
4" x 4" 12 Ply Pkg/2000
(435-2244) **\$79.95**
Non Woven. Non-Sterile. Rayon-Polyester Blend Quarter-fold. Low linting.
2" x 2" 4 Ply (435-2204)
1-2 **\$34.95**
3-up **\$33.95**



Half Chair Covers
(355-0505) Signature. 27 1/2" x 24"
Box/200 **\$23.95**



Full Chair Covers
(355-0101) 29" x 80" Box/125 **\$39.95**
(355-0150) 48" x 56". Box/150 **\$39.95**



Headrest Covers - Non Woven
Non Woven. Pkg/500. Blue, White & Mauve.
Regular 10" x 10" (201-7104)
Large 10" x 13" (201-8627)
Buy one **\$49.99**
Buy 4 cases **\$44.95**



Headrest Covers - Clear Plastic
Clear plastic covers. Box/250.
Regular (033-6146)
1-3 **\$10.95**
4-up **\$9.95**
Large (033-2201)
1-3 **\$11.95**
4-up **\$10.95**



Airwater Syringe Tips. Signature
(333-2489) Disposable air/water syringe tips in attractive colors. Pkg/250. **\$39.95**



Sure Tip Colors
(900-7021) Disposable air/water syringe tips in attractive colors. Pkg/250. **\$44.95**



Safe Tips
(201-6183) Box/1600 **\$289.95**
(201-6184) Bag/150 **\$37.95**
1-3 **\$34.95**
4-up



Airwater Syringe Tip White Plastic
(333-4246) Bag/125 **\$21.99**
(333-4245) Bag/1500 **\$229.95**



Sani Tips
Syringe Tips. Clear with sleeves. Bag/250.
(971-0250) **\$69.95**
Bag of 1500
(971-1600) **\$299.95**



Surgical Tips. Signature
Type I or II. Box/25. Same as Young!
1-11 **\$7.95**
12-up **\$6.95**
0.125" Type I (431-0604)
0.25" Type II (431-0608)



Brixton Air & Water Syringe Sleeves
(200-8965) Box/500. **\$14.95**

Syringe Sleeves. Signature
Box/500.
(431-0500) **\$6.95**
6-up **\$5.95**



Handpiece Sleeves
1 1/2" x 8". Box/500.
(431-0108) **\$14.95**



Tongue Depressors
Signature. Non sterile, wood tongue depressors. Box/500
(435-1015) **\$9.95**



Tray Sleeves
Perfect for instrument trays. Box/500.
Size B 10.5" x 14" (777-2003) **\$21.95**
4-up **\$20.95**
Size A: 11 5/8" x 14 1/2"
Box/500 (435-0500) **\$24.95**



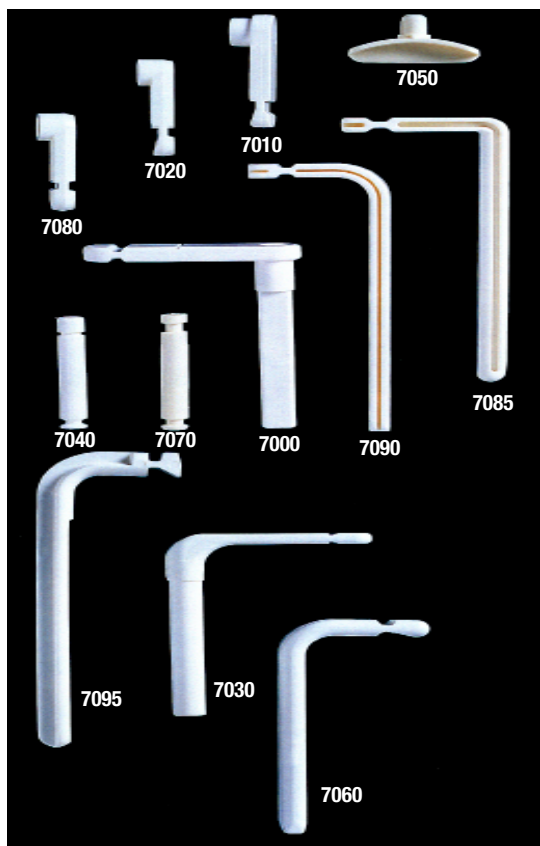
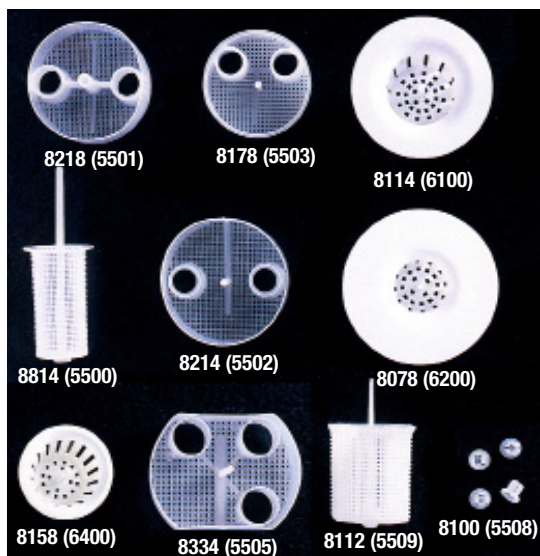
Kleenex Facial Tissue
(431-0437) Case/36 Boxes, Box/100 Sheets
\$96.60



Roll Towels
(431-0438) Case/30 Rolls, 70 - 2 Ply Sheets
\$51.95



Bathroom Tissue
(431-0439) 96 Single Rolls, 2 Ply Roll
\$79.99



Traps, Strainers & Canisters

5501: Fits A-Dec Models with Plastic canisters (Diameter 2 1/8")

(333-8218) Disposable Traps (Clear Color). Box/144	\$49.95
(333-9218) Disposable Traps (Clear Color). Bag/24	\$14.95
(333-8219) Disposable Traps (Blue Color). Box/144	\$49.95
(333-9219) Disposable Traps (Blue Color). Bag/24	\$14.95

5503: Fits Belmont, Biotec, Chayes, Den-Tal-Ez, Dentech, Pelton & Crane, Proma and others (Diameter 1 7/8")

(333-8278) Disposable Traps (Clear Color). Box/144	\$49.95
(333-9278) Disposable Traps (Clear Color). Bag/24	\$14.95
(333-8178) Disposable Traps (Green Color). Box/144	\$49.95
(333-9178) Disposable Traps (Green Color). Bag/24	\$14.95

6100: Fits Most Cuspidor Bowls Including A-Dec, Ampco, Belmont, Dabi Atlante, Dansereau, DCI, Den-Tal-Ez, Forest, Knight, Marus, MDT, Proma, Ritter, Schein

(333-8114) Cuspidor Strainers (Regular Size). Box/144	\$49.95
(333-9114) Cuspidor Strainers (Regular Size). Bag/24	\$14.95

6400: Fits A-Dec Casade and Performer Cuspidor Bowls (Diameter 1 5/8")

(333-8158) Cuspidor Strainers. Box/144	\$49.95
(333-9158) Cuspidor Strainers. Box/144	\$14.95

5505: Fits Pelton & Crane Spirit with White Plastic canisters (Diameter 3 3/4")

(333-8334) Disposable Traps (Clear Color). Box/144	\$49.95
(333-9334) Disposable Traps (Clear Color). Bag/24	\$14.95

5500: Fits A-Dec Casade and Performer (Diameter 1 1/4")

(333-8814) Disposable Traps (Clear Color). Box/144	\$49.95
(333-9814) Disposable Traps (Clear Color). Bag/24	\$14.95

5502: Fits A-Dec Models with Plastic canisters (Diameter 2 1/8")

(333-8214) Disposable Traps (Clear Color). Box/144	\$49.95
(333-9214) Disposable Traps (Clear Color). Bag/24	\$14.95
(333-9215) Disposable Traps (Yellow Color). Box/144	\$49.95
(333-9215) Disposable Traps (Yellow Color). Bag/24	\$14.95

6200: Fits Siemens, Planmeca, and many Cuspidors with small openings

(333-8078) Cuspidor Strainers (Small Size). Box/144	\$49.95
(333-9078) Cuspidor Strainers (Small Size). Bag/24	\$14.95

5509: Fits A-Dec Models with Plastic canisters (Diameter 2 1/8")

(333-8212) Disposable Traps (Small Size). Box/144	\$49.95
(333-9212) Disposable Traps (Small Size). Bag/24	\$14.95

5508: Saliva Ejector Traps

(333-8100) 72 pcs/bag, One Size Fits All. Pkg/8	\$79.95
---	---------

2400: Disposable Canisters (4.5" x 5.125"), Threads internal

(878-0242) Pkg/8	\$79.95
------------------	---------

2300: Disposable Canisters (3.5" x 4.375"), Threads internal

(878-0243) Pkg/8	\$79.95
------------------	---------

2350: Disposable Canisters (3.5" x 4.375"), Threads internal

(878-0244) Pkg/8	\$79.95
------------------	---------

2200: Disposable Canisters (2.75" x 3.625"), Threads internal

(878-0245) Pkg/8	\$79.95
------------------	---------

Bite Block

Box/144 pcs	\$49.95
-------------	---------

7000 (333-7000) Fits Midwest and Ritter Panorol, J. Morita Versaview Models

7010 (333-7010) Fits Siemens OP 10 Models and Instrumentarium

7020 (333-7020) Fits Siemens OP 3, OP 5, Models

7030 (333-7030) Fits Phillips, Den-Tal-Ez Panolite, Soredex

7040 (333-7040) Fits GE Panolipse and Gendex models

7050 (333-7050) 7 Fits Yoshida, Kaycor Panoura models

7060 (333-7060) Fits Planmeca Models

7070 (333-7070) Fits Panorex by Keystone

7080 (333-7080) Fits Belmont Autopan, FIAD Rotograph

7085 (333-7085) Fits Yoshida, Kaycor Panoura Models. New "L" Shape Design can replace Model 7050

7090 (333-7090) Fits Belmont X-Caliber Models

7095 (333-7095) Fits Panoramic Corporation



AH 26 Root Canal Sealer. Dentsply
Contains: Powder & resin.
(217-8363) **\$89.95**



AH Plus. Dentsply
Contains: 1 - 4 ml Paste of each (A & B),
Mixing Pad & Directions for use.
(217-8362) **\$109.95**



Calcium Hydroxide (USP). Signature
Powder of Calcium Hydroxide Chemically
Pure.
1 lb bottle (039-0001) **\$14.95**



Coe-Pak. GC America
Non Eugenol Surgical Dressing.
\$79.95

Regular (433-7685)
Hard & Fast (433-4499)



Dental Retention Pin
Self-threading pins for Retention of Composite
and Buildup Techniques. Handpiece driven pin
placement system. Made of titanium. Box/12
pins with 1 depth limiting drill. **\$49.95**
Size 0.60 mm (087-0210)
Size 0.75 mm (087-0211)



Dry Socket Paste. Sultan
(200-5312) 1oz jar.
1-3 **\$109.95**
4-up **\$99.95**



Endo Rulers
Signature. Aluminum Ionized with Laser
Lettering. Few colors available. Autoclavable
(233-9999) **\$9.95**



Endo Stops
Signature. Bag/100. 1-5 **\$9.95**
Buy 6 **\$8.95**
Rust (104-0100) Yellow (104-0103)
Blue (104-0101) Green (104-0104)
White (104-0102) Black (104-0105)



Silicone Color Code Rings
60 pieces - One Color **\$7.99**
(333-0115)
Assorted - 80 pieces **\$9.99**
(333-0116)



Endo-Ice
A fast and easy method to test pulp vitality.
6 oz Can. (647-2070) **\$22.95**



Eugenol U.S.P. (chemically pure). Signature
Used with Zinc Oxide as temporary cement.
Effective analgesic antiseptic for irritated pulp.
1 oz (301-8301) **\$11.95**



Flexi Post
Patented Split Shank. 20mm 10 post,
1 Drill Stainless Steel. **\$159.95**
Size 00 (221-3435)
Size 0 (976-8514)
Size 1 (976-8212)
Size 2 (976-9050)
Size 3 (976-9410)



Surgifoam
(200-3470) 24 Sponges 1cm x 1cm x 1cm
\$129.95



Gutta Percha Points
USP (Chemically Pure) Meets the requirement
of the ADA, specification # 57. Long shelf
life. Radio-opaque, easy evaluation of the
filled canal by x-rays. Contains anti bacteria
material (Will not allow growth of bacteria)
Presentation: Standardized Sizes N° 15, 20,
25, 30, 35, 40, 45.
Non Standardized Sizes: XF, FF, MF, F, FM, M.
Box-vial/120. 1-5 **\$6.99**
6-up **\$5.99**

Conventional (Accessory) Size

FM (300-5674)
F (300-5676)
M (300-5677)
FF (300-5678)
XF (300-5679)
MF (300-5680)

Standardized (ISO) Sizes

15 (300-5215)
20 (300-5220)
25 (300-5225)
30 (300-5230)
35 (300-5235)
40 (300-5240)
45 (300-5245)
Assorted 15-40 (302-1540)
Assorted 45-80 (302-4580)

Tapered

Box-vial/120. 1-5 **\$11.99**
6-up **\$9.99**

0.4 Taper

15 (377-5215)
20 (377-5220)
25 (377-5225)
30 (377-5230)
35 (377-5235)
40 (377-5240)
Assorted 15-40 (377-5555)
Assorted 45-80 (377-6666)

0.6 Taper

15 (387-5215)
20 (387-5220)
25 (387-5225)
30 (387-5230)
35 (387-5235)
40 (387-5240)
Assorted 15-40 (387-5555)
Assorted 45-80 (387-6666)



Hedstrom Files. Signature.

- 1-5 **\$6.99**
- 6-up **\$5.99**
- 21 mm # 8 (292-0821)
- 21 mm # 10 (292-1021)
- 21 mm # 15-40 (292-1421)
- 21 mm # 15 (292-1521)
- 21 mm # 20 (292-2021)
- 21 mm # 25 (292-2521)
- 21 mm # 30 (292-3021)
- 21 mm # 35 (292-3521)
- 21 mm # 40 (292-4021)
- 21 mm # 45-80 (292-4821)
- 31 mm # 15-40 (292-1431)
- 31 mm # 45-80 (292-4831)
- 25 mm # 8 (292-0825)
- 25 mm # 10 (292-1025)
- 25 mm # 15 (292-1525)
- 25 mm # 15-40 (292-1425)
- 25 mm # 20 (292-2025)
- 25 mm # 25 (292-0525)
- 25 mm # 30 (292-3025)
- 25 mm # 35 (292-3525)
- 25 mm # 40 (292-4025)
- 25 mm # 45-80 (292-4825)



K-File. Signature

- 1-5 **\$6.99**
- 6-up **\$5.99**
- 21 mm # 8 (292-2108)
- 21 mm # 10 (292-2110)
- 21 mm # 15-40 (292-2114)
- 21 mm # 15 (292-2115)
- 21 mm # 20 (292-2120)
- 21 mm # 25 (292-2125)
- 21 mm # 30 (292-2130)
- 21 mm # 35 (292-2135)
- 21 mm # 40 (292-2140)
- 21 mm # 45-80 (292-4580)
- 25 mm # 8 (292-5508)
- 25 mm # 10 (292-2510)
- 25 mm # 15 (292-2515)
- 25 mm # 20 (292-2520)
- 25 mm # 25 (292-2525)
- 25 mm # 30 (292-2530)
- 25 mm # 35 (292-2535)
- 25 mm # 40 (292-2540)
- 25 mm # 45 (292-2545)
- 25 mm # 50 (292-2550)
- 25 mm # 55 (292-2555)
- 25 mm # 60 (292-2560)
- 25 mm # 70 (292-2570)
- 25 mm # 80 (292-2580)
- 25 mm # 15-40 (292-2514)
- 25 mm # 45-80 (292-2548)
- 25 mm # 90-140 (292-6591)
- 31 mm # 15 (292-3115)

- 31 mm # 20 (292-3120)
- 31 mm # 25 (292-3125)
- 31 mm # 15-40 (292-3114)
- 31 mm # 45-80 (292-3148)
- 31 mm # 90-140 (292-3191)



Paste Filler (Lentulo)

Assorted 25mm 1-4
(301-9006) \$8.99



Irrigating Syringe. Signature.

- 1-2 **\$34.95**
- 3-up **\$33.95**
- (294-2120) 23 Ga Box/100
- (294-3618) 27 Ga Box/100
- 1-2 **\$9.95**
- 4-up **\$8.95**
- (847-5815) 3 cc Box/100
- 1-2 **\$14.95**
- 4-up **\$13.95**
- (202-5273) 12 cc Box/50



Irrigating Needle Tips.

Bendable Side-vent Irrigating Tip designed for irrigating and cleansing post holes, canals, pockets and fistulas.
Box/100 **\$19.95**

- 23 Ga (202-5272)
- 27 Ga (202-5480)



Monoject Endo Syringes

- 23/27 Ga x 1 1/4. Box/100.
- 23 Ga (333-0037) **\$52.99**
- 27 Ga (333-0039) **\$52.99**



Luer Lock Irrigation Syringe

- (294-2110) 3cc Box/100 **\$10.95**
- (294-2112) 6cc Box/100 **\$11.95**
- (294-2111) 12cc Box/100 **\$14.95**



Paper Points Sterilized

Signature. Rigid enough for easy insertion into canals. Dry canal fast (highly absorbent). Precisely rolled by hand to match instruments and gutta percha points. After packaged, sterilized by Gamma Radiation Cobalt 60. Compartment Box/200 sterilized points.

- 1-5 **\$4.95**
- 6-up **\$3.95**
- # 15 (300-3315)
- # 20 (300-3320)
- # 25 (300-3325)
- # 30 (300-3330)
- # 35 (300-3335)
- # 40 (300-3340)
- # 45 (300-3345)
- # 50 (300-3350)
- # 55 (300-3355)
- # 60 (300-3360)
- # 70 (300-3370)
- # 80 (300-3380)
- Assorted 15-40 (300-1540)
- Assorted 45-80 (300-4580)
- Fine (301-9001)
- Fine-fine (301-9002)
- Medium-fine (301-9003)
- Fine-medium (301-9004)
- Medium (301-9005)



Peeso Reamers & Gates Glidden. Signature

High Quality. Stainless Steel. Easy to use blister package. Same as Miltex.

- 1-3 **\$14.99**
- 4-up **\$13.95**

Peeso Reamers: Enlarge the Root Canal in order to receive a post.
Peeso Reamers. Pkg/6

- # 1 (292-3201)
- # 2 (292-3202)
- # 3 (292-3203)
- # 4 (292-3204)
- # 5 (292-3205)
- # 6 (292-3206)
- Assorted # 1 to 6 (232-3216)

Gates: Enlarges the Upper Portion of the Canal & Assists in Bulk Removal of Dentin Gates. Pkg/6 **\$14.99**

- # 1 (292-0132)
- # 2 (292-0232)
- # 3 (292-0332)
- # 4 (232-0432)
- # 5 (232-0435)
- # 6 (232-0436)
- Assorted # 1 to 6 (232-1632)



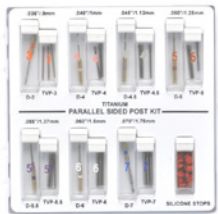
Plastic Pins

Plastic Pins that make restoration of non-vital teeth a fast, precise safe and economical procedure. (For Casting Root Post)
Bag of 60 plastic pins
(372-0008) **\$49.95**



RC Prep. Premier
(478-4499) 18 g jar.

1-3 **\$32.95**
4-up **\$31.95**



Post System Kit. Signature

Precision Post System (Parapost) - Vented parallel post
Signature. Precision Post Technique
The finest quality vented post system available. Surgical stainless steel post. Posts and Drills are "compatible" with Whaledent Para Post System.
Posts are made of surgical stainless steel. Come in the standard 5 sizes plus two additional sizes, 4.5 & 5.5. Kit contains: 7 drills, one each size, 21 posts, 3 each sizes, 1 vial endo stop.
(221-3434) **\$114.95**

Refill Drills: 2 drills per package same size
\$29.95

- D-3 (221-0038)
- D-4 (221-4004)
- D-4.5 (221-4045)
- D-5 (221-4155)
- D-5.5 (221-4055)
- D-6 (221-4006)
- D-7 (221-4007)

Refill Post: 7 convenient sizes; 10 posts same size
\$41.95

- SVP-3 (221-9993)
- SVP-4 (221-9994)
- SVP-4.5 (221-9945)
- SVP-5 (221-9995)
- SVP-5.5 (221-9955)
- SVP-6 (221-9996)
- SVP-7 (221-9997)



Rubber Dam (Pure Latex)

Signature. Used for isolating the entire field from blood, tissue, saliva and other fluids. Protects against infection. Better access. Visibility improved. Moisture controlled. Tissue protection. Mint flavor. Green
5" x 5". Box /52 Med. **\$7.95**
6" x 6". Box /36 Med. **\$8.95**
(410-0155)
(410-0166)



Screw Post. Signature

These Post are widely used in non vital teeth where the crown is completely destroyed and a reconstruction of the tooth is seen with a composite or amalgam. Kit: 240 Assorted Posts, 1 Hallow Key & 1 Solid Key
(255-0240) **\$109.95**



Reamers

(087-0006) 6 per set **\$59.95**

Set of 2 Keys.

Hollow Key (255-0001) **\$19.95**
Cross key (255-0002) **\$19.95**

Refill, 12 Posts **\$9.95**

- Short 1 (200-7830)
- Short 2 (200-5593)
- Short 3 (200-8028)
- Short 4 (200-8792)
- Short 5 (200-5895)
- Short 6 (200-4986)
- Med 1 (200-9891)
- Med 2 (200-3103)
- Med 3 (200-7247)
- Med 4 (200-8547)
- Med 5 (200-5818)
- Med 6 (200-4962)
- Long 1 (200-5257)
- Long 2 (200-4786)
- Long 3 (200-7775)
- Long 4 (200-5576)
- Long 5 (200-4886)
- Long 6 (200-1533)
- X-Long 4 (200-1548)
- X-Long 6 (200-6759)



EDTA Solution

2oz/Bt Ea (333-0059) **\$10.99**
8oz/Bt Ea (333-0060) **\$27.99**



Cavit G. Espe

(478-4404) 28 g jar **\$17.95**



Seal G. Signature

(146-0032) Pre-mixed temporary filling & cavity seal. Hardens rapidly when exposed to saliva. Adheres very well to moist or dry cavity walls. Form a perfect seal for medicaments. Withstand mastification. Not readily soluble by oral fluids. No affected by dental medications.
38 g jar. Compare to Cavit G!
1-3 **\$8.95**
4-up **\$7.95**



Sealapex. SybronEndo

(223-2799) Non-Eugenol calcium hydroxide. Complete Kit. 1-2 **\$49.95**
3-up **\$48.95**



Sutures

Superior point, attachment & packaging.

- Silk Black Braided. 1-3 **\$21.95**
- 4-up **\$19.95**
- 1/2 circle reverse cutting 3-0 **(200-6320)**
- 3/8 circle reverse cutting 3-0 **(200-7772)**
- 3/8 circle reverse cutting 4-0 **(200-6830)**

- Gut Plain. 1-2 **\$24.95**
- 3-up **\$22.95**
- 1/2 circle reverse cutting 3-0 **(200-6120)**
- 3/8 circle reverse cutting 4-0 **(200-0669)**



Superoxol

35% Hydrogen peroxide used to bleach non-vital teeth only. **(200-7882) \$19.95**



Temporary Stopping. Signature

- Gutta percha stick.
- (104-0001) 1 oz \$2.25**
- (104-0004) 4 oz \$9.00**
- (104-0008) 8 oz \$18.00**



Tubli-Seal. Kerr

(223-1768) Two paste system. Complete kit. 1-2 \$51.95
 3-up **\$49.95**



Zinc Oxide (USP). Signature

Chemically pure.
 4 oz bottle **(301-7804) \$5.95**
 8 oz bottle **(301-7808) \$6.95**
 1 lb bottle **(301-7801) \$8.95**



Sodium Hypochlorite

16 oz. bottle **(207-6371) \$24.95**



ParaPost Fiber White Post. Coltene/Whaledent

Metal-free aesthetic post with a unidirectional glass fiber-resin formulation. Compares to dentin.

- Refill Post. Pkg/5 **\$64.95**
- PF-161-4.5-.045 **(205-0280)**
- PF-161-5.0-.050 **(205-0281)**
- PF-161-5.5-.055 **(205-0282)**
- PF-161-6.0-.060 **(205-0283)**

Autoclaves



Tuttnauer
Your Sterilization & Infection Control Partners

Tuttnauer (971-1188) Autoclave *Call for price*



Midmark M11 - NEW!! (971-1111) ALL MODELS *Call for price*



Autoclave Cleaner (333-2991) **\$24.95**

Curing Light



Signature LED Curing Light
LED Curing Light
(333-0026) **\$399.99**



Curing Light. Signature (219-0329) *Call for price*



Portable Curing Light Unit. Signature
Ingenious design! Comes with its' own housing compartment, or connect direct to your delivery system like a handpiece! Option of 3 Curing modes:
Fast (F): Full light output
Ramp (R): Soft start light output
Pulse (P): 0.2 second intervals
(219-0330) **\$399.95**

Portable Units



Portable Unit
Brand new!! Complete unit includes: high speed - low speed, air/water syringe, cuspidor system with fully operational vacuum and compressor. Call for more details.
(971-0025) **\$995.00**



Ortho Cart. Signature (333-0027) The rear delivery dental cabinet is the perfect mobile cabinet to accommodate any general dentistry practice. Cabinets are available in a standard white color with drawers that can be painted in white, gray, surf, or almond. Cabinets can also be furnished with any laminate option of your choosing for an additional fee. This laminate can be applied to either the whole cabinet or to individual sides, doors, or drawers of the cabinet. The option to add a solid surface top, is also available for an additional fee.
Specifications
Air Compressor: 115 volts 50/60 Hertz, 25 CEM overload protected.
Wt: 40 lbs.
1/2 H.P. Single Head, 35 DBA
Auto on/off
Tank Capacity: 1 gallon rated 125 lbs.
Ausi/UL STD 1450 Inverter rated tank regulator & gauge w/drain valve
Outlet regulator & Gauge ~ Mount w/ isolator protection
Coalescing filter w/auto drain
Rated to 0.01 microns.

Call for price



Portable Unit (333-0028) Fully self-contained air dental system. Quick and easy to set up and operate. Ready for travel.

Call for price

X-Ray



Xtender Film Processor. Velopex
Processes all sizes of film from intra-oral size, to panoramic and cephalometric (full skull size). High quality, archivable radiographs are delivered dry in five minutes. Endodontic films may be viewed wet (archival) after only two minutes 30 seconds.
(333-5488) *Call for price*



Endos Units. Dent-X
AC (333-0003) *Call for price*
ACP (333-0004) *Call for price*
DC (333-0005) *Call for price*



Papaya Plus. Genoray
(101-5143) New Concept/Multi-functional Imaging System. Cdte sensor, which improves the image quality while keeping radiation exposure to a minimum. Panoramic Imaging, Cephalometric Imaging and MMF (Multi-Focus Function)
Call for price



PortView. Genoray
Industry Leading Contrast Resolution - Best at the Penny Test. Industry Leading Spatial Resolution - 19 micron pixel size. Less Graininess - Cleanest image on the market
(101-5147) *Call for price*

Compressors



Compressor. Techwest
Oil-less compressor.
(333-0006) *Call for price*



Compressor. DCI
DCI's Oil-Less Compressor line utilizes a unique 3 stage drying system combined with a timed moisture purge valve that delivers the most consistent dry air in the dental market.
(333-0007) *Call for price*

Vacuum



Vacuum Pump. Tech West
(333-0010) *Call for price*

Implant Motors



C-Sailor Implant Motor 110v
(333-0011) Swiss Brushless surgical motor which has been designed with an intelligent cooling system.
Call for price



Surgic AP. NSK
(333-0029) Compact and programmable. Every program memorizes speed, torque, flow of cooling and sense of rotation. Every adjustment can be modified even when the unit is in use. Screen LCD of great size for a better visualization. Short and light weight made of stainless steel.
Call for price

Chair Packages & Accessories

Celebrity
WESTAR



Celebrity Chair Package (333-0016) Factory New with 3 year warranty • Made with US components • 2 or 3hp Delivery System • Cuspidor HVE/SE Triple Syringe w/ Autoclavable Tip • Standard Flex Arm with Air Lock • Master on/off switch • Std junction box • Ulphostery chart available upon request • Options: Fiber optics, Cavitron quick disconnect.
Call for price

a dec



ADEC 1021 (333-5021) • Adec Radius • Adec 3hp Delivery System with Adec Rear Assembly Arm • HVE/SE Triple Syringe • Touch Pad • 6300 Adec Light
Call for price



Westar Medical Products, Inc.



Westar Excursion Package (139-0002) Factory New with 5 year warranty • US Made and Assemble with all US Parts • Model 5030 (Nautica) or 5037 (Euro) • Model 2001 Electromechanical patient chair • Model 5000 Hydraulic Chair available as well • Model 5033 Assistant's Utility Option • High Volume Evacuator - Saliva Ejector - Syringe • CV Canister on Rear Arm - Radius Package
Call for price



Westar Medical Products, Inc.



Westar Excursion Package (139-0004) Factory New with 5 year warranty • US Made and Assemble with all US Parts • 2 or 3hp Delivery System • Assistant's Arm HVE/SE + Optional Cuspidor • HVE/SE Triple Syringe with Autoclavable Tip
Call for price

DCI Chair Packages & Accessories



DCI Equipment - Pro Ensemble Series
(333-0020) Complete Dental Unit w/stools.

Call for price



DCI Equipment - Pro Hygiene Ensemble
(333-0021) Complete Dental Unit w/stools.

Call for price



DCI Alliance Swing Mount
(333-0022) Complete Dental Unit w/stools.

Call for price



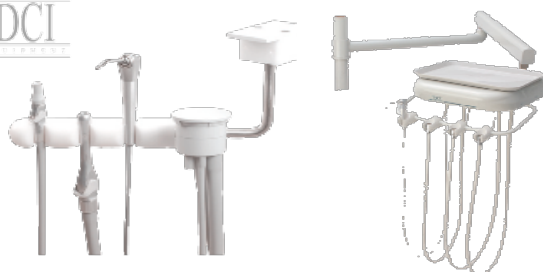
DCI Alliance Ensemble
(333-0023) Complete Dental Unit w/stools.

Call for price



DCI Lights
(333-0024) DCI lights in different configurations.

Call for price



DCI Accessories
(333-0025) DCI Accessories.

Call for price

Series Dental Cabinets



Signature II Sterilization Center

(999-0018) • Red/Blue lights • Stainless steel sink • Two counter waste drop (Regular and hazardous waste) • Slide out shelf for sterilizer • Slide out shelf for statim • Shipped in 3 pieces - 106" w x 80" h x 27" d
Optional: • Recessed cut-out for ultrasonic • Tapmaster foot pedal shown • Automatic soap dispenser shown • Lights shown in picture • Shelves shown

Customs Designs and Additional Options Available

Call for price



Signature Essential Dental Sink Cabinet Module

(999-0023) • Stainless steel sink • High pressure laminate color • Metal sub base w/levelers & removable back panel • Trash drop • Handles on doors • Assembled prior to shipping • 31.25" w x 37" h x 20" d
 • Customs Designs and Additional Options Available

Call for price



Signature I Sterilization Center

(999-0011) • Location for dryer • Slide out shelf for sterilizer • Slide out shelf for statim sterilizer • Stainless steel sink • Faucet • Two counter waste drops (regular and hazardous waste) • Valance Lighting • Shelving for procedure tubs, setup trays and instrument cassettes • Storage • Drop down counter top for ultrasonic • Metal base • Assembled into three pieces prior to shipping • 106" w x 27" d x 80" h
Optional: • Recessed Ultrasonic cleaner

Customs Designs and Additional Options Available

Call for price



Signature I Dentist Sink Module

(999-0007) • Upper storage • Task lighting • Electrical outlet • Removable back panel • Tempered glass doors • Touch latch doors • Metal base • Assembled prior to shipping • 32" w x 73" h x 20" d

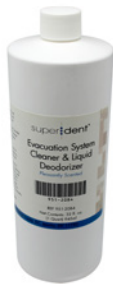
Call for price



Evacuator Tips. Signature

(777-1142) Softer end for patient comfort, opaque plastic disposable. Vented one side only. Box/100.

1-19 \$4.95
20-up \$3.95



Evacuor System Cleaner. Signature

(202-6316) Evac. 32 oz \$19.95



Hygoformic Saliva Ejectors

(333-0060) Holds itself and patients tongue out of the way. Shaped like C-clamp. \$9.95



Medicon Saliva Ejectors

Contours to custom fit each patient's mouth. Will not aspirate tissue. Needs no special adapter. Non-clogging. No memory after bending. Disposable.

Bag/100. White or clear. Same as Crosstex.
Made in Italy. 1-49 \$3.99
50-up \$3.79
Clear (758-7000)
White (758-7002)



Saliva Ejectors Screens

(758-7026) Plastic & disposable ejectors. Pkg/25 \$7.95



HVE Screens

(758-9654) Box/100 \$7.99
1-5 \$6.99
6-up



Surgical Tips. Signature

Type I or II. Box/25. Same as Young!
1-11 \$7.95
12-up \$6.95
0.125" Type I (431-0604)
0.25" Type II (431-0608)



Three-Way Syringe Tips Autoclavable

(837-6038) \$4.95
(837-6039) Pkg/10 \$39.95
(837-6040) Pkg/20 \$49.95



Prisma Gloss. Dentsply
(878-0239) 2 g Syringe. High gloss.
 1-3
 4-up

\$50.95
\$49.95



Diamond Polishing Paste
(971-0038) 2 gm Syringe.
 1-3
 4-up

\$19.95
\$18.95



Enhance Finishing
 Available in Cups, Discs or Points.
 1-4
 5-up
 Cups **(322-0278)**
 Discs **(322-6152)**
 Points **(322-8109)**

\$79.95
\$77.95



Polishing & Finishing Strips (metal)
(164-0018) Medium 3.18 mm

\$9.95



Porcelain Polishing Kit
(164-0085) 12 pieces (1 each of small point, point, cup, and disc in coarse, medium, and fine)
\$140.95



Finishing Stones for Composite
 White Arkansas stone (Aluminum Oxide)
 Box/12. Same as Shofu!
 1-3
 4-up
 White FG

\$14.95
\$12.95

Conical **(345-1105)**
 Flame **(345-1155)**
 Round **(345-9955)**
 Straight Cone **(345-9905)**
 Green FG
 Conical **(345-9960)**
 Flame **(345-9959)**
 Round **(345-9958)**
 Straight Cone **(345-9957)**



Sof-Lex. Pop On Mandrels
 Pkg/3
 RA **(877-3622)**
 HP **(877-7713)**

\$29.95



Sof-Lex. 3M
 Box/85 disk. Available in superfine, coarse, 3/8" 1981, 1/2" 1982 & XT 3/8" 2381 & 1/2" 2382. All sizes, grits and shapes available.
 1-3 **\$49.95**
 4-up **\$48.95**
 Pop-On Discs Refill
 1/2 Fine **(877-2660)** 1982f
 1/2 Coars **(877-3240)** 1982c
 1/2 Medium **(877-2950)** 1982m
 1/2 Superfine **(877-2363)** 1982sf
 3/8 Fine **(877-1391)** 1881f
 3/8 Coarse **(877-2063)** 1981c
 3/8 Medium **(877-1767)** 1981m
 3/8 Superfine **(877-9216)** 1981sf
 XT Refill Pop-On Discs
 1/2 Fine **(877-3768)** 2382f
 1/2 Coarse **(877-4272)** 2382c
 1/2 Medium **(877-1824)** 2382m
 1/2 Superfine **(877-3433)** 2382sf
 3/8 Fine **(877-1833)** 2381f
 3/8 Coarse **(877-3137)** 2381c
 3/8 Medium **(877-0894)** 2381m
 3/8 Superfine **(877-6017)** 2381sf

Shofu Abrasives. Dura-White Stones

Micrograined aluminum oxigen grit. Long-lasting vibration-free performance.
 Use for fine finishing on enamel, composites, glass ionomer restoratives and porcelains. Box/12.
 HP, CA, FG

1-5 **\$23.95**
 6-up **\$22.95**

Shape Category	CN1	CY2	FL1	FL2	FL3	IC4	RD1	RD2	RE1	TC1	TC4	WH4
Shape												
ISO#	024	025	030	025	030	045	030	024	062	020	040	060
HP Shofu PN	0201		0202	0203	0204	0205	0207		0209	0210	0211	0212
	009-0201		009-0202	009-0203	009-0204	009-0205	009-0207		009-0209	009-0210	009-0211	009-0212
CA Shofu PN	0221			0223	0224		0227					
	009-0221			009-0223	009-0224		009-0227					
FG Shofu PN	0241	0243		0244			0247	0248		0249		
	009-0241	009-0243		009-0244			009-0247	009-0248		009-0249		



Contra Angle
(971-3000) 30,000 RPM **\$39.95**



Contra Angle Type E
(008-1102) **\$89.95**
(008-1103) Push Button **\$89.95**



High-Speed Handpiece. Signature
(367-2102) 2 hole
(367-2103) 4 hole
Bur-changer. Super-torque. Light weight. Economically priced.
Perfectly balanced. Quiet.
1-2 **\$109.95**
3-up **\$108.95**
Bur changer (367-2100) **\$14.95**



Push Button Canister Turbine
(100-7566) **\$99.95**



High-Speed Fiber Optic Handpiece with Internal LED Light Generator. Signature
• LED internal light generator
• NO TRANSFORMER NEEDED!
• High Torque 400,000 RPM Motor
(333-0019) 1-3 **\$199.95**
4-up **\$179.95**



High-Speed Handpiece. Signature
Push-button with turbine, ceramic bearing, bur changer and brush
(971-0028) 2 hole
(971-0023) 4 hole
1-2 **\$189.95**
3-up **\$179.99**



Midwest Tradition Power Lever. Dentsply
(201-8805) **\$599.95**
Turbine Compatible with Midwest Standard replacement cartridge
(201-8804) **\$199.95**
Power Lever replacement cartridge (200-9986) **\$199.95**
Push-button replacement cartridge (200-9987) **\$199.95**



Midwest Quiet Air
Standard replacement cartridge (200-9988) **\$199.95**
Power Lever replacement cartridge (200-9989) **\$199.95**



High-Speed Handpiece Push-button. NSK
(200-9990) With turbine, bur changer and brush.
1-2 **\$299.95**
3-up **\$289.99**



Replacement Turbine for Handpiece
(971-0031) Signature. For Japanese canister NSK Champion standard type
\$59.95



High-Speed Handpiece. MK-Dent
 Included accessories: Wires for spray pipe cleaning; lubrication tools for spindle and rotor; wire holder and brush for external cleaning.
(301-9581) \$399.95



Low Speed Handpiece. Signature
 Micro Motor Signature-Torque. Fully autoclavable. Speed can easily be controlled. Speeds 5,000 rpm to 20,000 rpm. Supplied with nose cone. The majority of the nose cones and contra angle fit the motor.
 Motor w/Nose Cone 2 Holes **(008-5555) \$299.95**
 Motor w/Nose Cone 4 Holes **(008-0084) \$299.95**
 Motor **(008-0079) \$199.95**
 Nose Cone **(008-0080) \$99.95**
 Contra Angle Type E **(008-1102) \$89.95**



Low Speed Handpiece. NSK
 W/ Contra Angle: **(011-1309) \$649.95**
 W/out Contra Angle: **(011-1310) \$549.95**



Low Speed Handpiece. Max Series
 Type E contra angle 5K - 20K RPM. Push button or latch type contra angle.
(011-1311) \$229.95
 Low Speed **(011-1312) \$189.99**
 Contra Angle Type E **(008-1102) \$89.95**



K-500 Series (w/Mini Head)
 Powerful Highspeed push button with precise balance. Ceramic Bearing. Fiber Optic 6-pin complete with Kavo style coupler. Compatible with all Kavo Handpieces. 1 year warranty on Handpiece. W/ Fiber Optics: **(011-1313) \$399.95**
 Ceramic Bearing Turbine K-Series **(011-1314) \$99.95**



K-600 Series
 Powerful Highspeed push button with precise balance. Ceramic Bearing. Fiber Optic 6-pin complete with Kavo style coupler. Compatible with all Kavo Handpieces. 1 year warranty on Handpiece. W/ Fiber Optics: **(011-1315) \$399.95**
 W/out Fiber Optics: **(011-1316) \$299.95**



K-LED Series
 Fiber Optic Ceramic Bearing LED - E Generator. No Transformer needed!
(011-1317) \$299.95



Surgical Series
 Highspeed push button with 45 degree angle. Design for maximum access and visibility. Ceramic Bearing.
(011-1318) \$399.95
 Surgical Series Ceramic Bearing Turbine (3 month warranty) **(011-1319) \$99.95**



Super Air Push Button
 High-Speed push button w/ Ceramic Bearing.
 (011-1320) **\$139.95**
 Ceramic Bearing Turbine
 (011-1321) **\$69.95**



Pana Air High Speed. NSK
 High-Speed handpiece. Push button.
 (011-1322) **\$199.95**



DCI Handpiece Flush System
 • Provides regulated and filtered air for cleaning and aiding in the lubrication of handpieces • Purges air and water coolant lines
 • Compact tabletop model-no foot control required • Adjustable air pressure, easy to read gauge • Aids in quick relubricating following autoclaving • Bottle collects excess lubricant • 35 micron filter • Easy clean surfaces • Easy Installation • Requires 80 PSI air hook up • For high speed handpieces only • Requires adapter
 (072-4060) **\$199.95**



Lubricating Spray, Signature
 Specially formulated cleaners and lubricating conditioner. Designated specially for high and low speed handpieces, including belt driven handpieces.
 8 oz can (072-0375) **\$16.95**



Kavo Spray
 W/o Nozzle 500 ml.
 (333-0038) **\$54.99**

Adapters and Accessories

- Electric Handpiece Adapter (072-4078) **\$40.00**
- Borden Adapter (072-4087) **\$38.00**
- Henry Schein Adapter (072-4098) **\$38.00**
- KAVO Adapter (072-4086) **\$42.00**
- Lares Adapter (072-4090) **\$42.00**
- Midwest 4 or 5 hole Adapter (072-4088) **\$32.00**
- Midwest XGT Adapter & Stylus with Swivel (072-4111) **\$48.00**
- NSK Adapter (072-4084) **\$48.00**
- Star Adapter (072-4089) **\$38.00**
- W & H Adapter (072-4096) **\$42.00**
- Replacement Bottle, Less Cap (072-4080) **\$10.00**
- Silicone Tubing, 6" Length (072-4076) **\$4.00**

Replacement Handpiece Flush Adapter O-Rings

- O-Ring, KAVO Adapter (072-4086) (072-2282) 12 Pkg **\$14.00**
- O-Ring, KAVO Adapter (072-4086) (072-2283) 12 Pkg **\$14.00**
- O-Ring, Borden Adapter (072-4087) (072-2257) 12 Pkg **\$10.00**
- O-Ring, Borden Adapter (072-4087) (072-2284) 12 Pkg **\$22.00**
- O-Ring, Star Adapter (072-4089) (072-2254) 12 Pkg **\$10.00**
- O-Ring, Star Adapter (072-4089) (072-2268) 12 Pkg **\$14.00**
- O-Ring, Lares Adapter (072-4090) (072-2281) 12 Pkg **\$10.00**
- O-Ring, Lares Adapter (072-4090) (072-2286) 12 Pkg **\$8.00**
- O-Ring, W & H Adapter (072-4096) (072-2287) 12 Pkg **\$4.00**
- O-Ring, W & H Adapter (072-4096) (072-2288) 12 Pkg **\$4.00**
- O-Ring, H. Schein Adapter (072-4098) (072-2357) 12 Pkg **\$10.00**
- O-Ring, H. Schein Adapter (072-4098) (072-2354) 12 Pkg **\$10.00**
- O-Ring, Midwest XGT Adapter (072-4111) (072-2294) 12 Pkg **\$8.00**
- O-Ring, Midwest XGT Adapter (072-4111) (072-2295) 12 Pkg **\$10.00**



Impression Gun
High performance for 5 ml cartridges. Includes 1:1 Slide.
(301-9611) **\$99.95**



Disposable Impression Syringes. Signature
(971-0022) Adjustable point.
Box/50.
1-3 **\$10.50**
4-up **\$9.95**



Utility Syringe Curved
Multi purpose/curved tip syringe used for impression materials and irrigation
(971-0029) **\$21.99**



Monoject 412 Utility Syringe
Curved Tip.
(333-0081) **\$29.95**



Intra Oral Mixing Tips
(100-0767) Yellow. Bag/100 **\$29.95**
(100-0059) Clear. Bag/100 **\$29.95**



High Performance Tips
Mixing tips for 50 ml. Pkg/48 **\$ 29.95**
Small Yellow 4.2 mm (100-0764)
Medium Pink 5.4 mm (100-0765)
Large Green 6.5 mm (100-0766)
X-Large Purple 7.5 mm (100-9813)



Penta Mixing Tips
(478-1021) Red. Pkg/50. New style!!!
1-4 **\$49.95**
5-up **\$44.95**



Alginate Impression Material - Type "J" Signature. Meets A.D.A. specification #18. FDA approved. Bags or canister. Same as Jeltrate. Bag of 1 lb.
1-11 **\$9.95**
12-up **\$8.95**
Fast (300-1001)
Regular (300-1110)
Alginate Canister empty (300-1000) **\$2.00**



Jeltrate Plus. Dentsply Caulk
(322-3864) Fast Set 1 lb **\$13.99**
(322-3865) Regular Set 1 lb **\$13.99**



Kromatica
Fast Set (333-0062) **\$13.95**



Coe-Flex. GC America
All purpose polysulfide impression material.
Regular Set (433-1482) **\$47.99**
Regular Fast Set (433-3781) **\$47.99**



Superflex - Super saver brand
(478-3658) **\$24.95**



Aquasil Ultra - Dentsply
4-50 ml. Cartridges & Tips. **\$109.95**
Aquasil LV (322-6393)
Aquasil LV Fast Set (322-4653)
Aquasil Rigid (322-6394)
Aquasil Rigid Fast Set (322-6395)
Aquasil Monophase Reg. Set (322-6396)
Aquasil Heavy Ultra Fast Set (322-6397)
Aquasil Rigid Ultra Fast Set (322-6398)



Examix NDS
VPS impression material
Refill Package with tips **\$27.99**
4 & up **\$26.99**
16 & up **\$25.99**
Contains 2 - 48 ml Cartridges without Tips.
Injection - Pink (433-3128)
Monophase - Purple (433-3130)
Regular -Blue (433-3129)
Heavy - Yellow (433-3126)



Exafast NDS
Fast-setting VPS impression material
Refill Package with tips **\$27.99**
4 & up **\$26.99**
16 & up **\$25.99**
Contains 2 - 48 ml Cartridges & 6 Mixing Tips.
Injection (333-2647)
Monophase (333-9552)
Regular (333-7072)
Heavy (333-4598)

Super Bulk Package each **\$640.95**
Contains: 80 - 48 ml Cartridges
Monophase (Purple) (333-8843)
Heavy Body (Yellow) (333-3012)



Genie VPS Impression Material Sultan Healthcare

2-Cartridge Pack **\$26.99**
 4 & up **\$25.99**
 12 & up **\$24.99**

Light Body, Standard Set (green) **(312-0004)**

Light Body, Rapid set (green) **(312-9081)**

Regular Body, Standard Set (blue) **(312-4925)**

Regular Body, Rapid Set (blue) **(312-6224)**

Heavy Body, Standard Set (purple) **(312-5377)**

Heavy Body, Rapid Set (purple) **(312-2183)**

BULK PACK \$509.99

Contains: 60 - 50 ml cartridges. Specify:

Light Body, Standard Set (green) **(312-9490)**

Light Body, Rapid set (green) **(312-5296)**

Regular Body, Standard Set (blue) **(312-7422)**

Regular Body, Rapid Set (blue) **(312-5131)**

Heavy Body, Standard Set (purple) **(312-8271)**

Heavy Body, Rapid Set (purple) **(312-0491)**



Vinyl Polysiloxane. Signature Cartridge System \$21.95

	Fast Set	Reg Set
Light	(301-0811)	(301-0814)
Med. Monophase	(301-0812)	(301-0815)
Heavy	(301-0813)	(301-0816)



Vinyl Polysiloxane Impression. Signature Material / Putty-Putty

(301-0809) Compatible with epoxy or gypsum die materials. Radiopaque. Compare to Reprosil!

Kit: 300 g Base & Catalyst.
 1-4 **\$54.95**
 5-up **\$52.95**



Express. 3M (877-2547) Compu Complete Kit. Regular Set. Putty.

1-3 **\$119.95**
 4-up **\$117.95**



Exabite II NDS. GC America Bite Registration Creme - 2 pack-refill

Contains 2, 50 mL cartridges & 12 mixing tips.
(333-6520) \$38.99
(333-7858) \$37.99

Bulk Pack - Contains 8, 50 mL cartridges & 48 mixing tips **(333-7858) \$149.95**



Bite Registration Cartridges. Signature

2 - 50 ml cartridges & mixing tips.
(971-0137) Fast Set \$24.95
(971-0139) Regular Set \$24.95



Regisil 2x. Dentsply Caulk
 4 - 50 ml cartridges & mixing tips. **(322-9299) \$129.95**



Impregum F. Espe America
 Medium viscosity regular set polyether impression material. Double pack includes 2 tubes of base, 2 tubes of catalyst & mixing pad. **(478-2212) \$119.95**
 Adhesive **(478-4802) \$18.50**



Impregum Penta. Espe America
 Regular Set. Standard package: 2 poly bags 300 g paste, 2 poly bags 66 g catalyst and pentamatic cap. **(478-3504) \$264.95**



Impregum Penta Soft. Espe America
(478-5674) Medium body polyether impression material. Standard pack: 2-300 ml poly bags of base paste and 2-66 ml poly bags of catalyst **\$289.95**



Dimension Penta H. Espe America
(478-1291) Heavy body tray, regular set vinyl polysiloxane impression material. Standard package includes: 2 300 ml poly bags and 2 300 ml poly bags catalyst.
 1-4 **\$299.95**
 5-up **\$295.95**



Permadyne. 3M Espe
 (478-8122) Double pack. 2 tubes base & catalyst & mixing pad. **\$179.95**



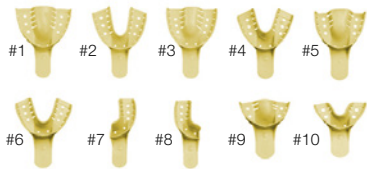
Alginate/VPS - Tray Adhesive
 Signature. 1 oz.
 (971-0030) **\$11.95**



Alginate Tray Cleaner. Signature
 (639-4522) 1 lb.
 1-3 **\$16.95**
 4-up **\$15.95**



Coe Tray Cleaner
 Remove alginate, wax, and material compounds from metal trays and instruments.
 (333-0080) **\$31.99**



Disposable Impression Trays Autoclavable
 1-11 **\$9.90**
 12-up **\$7.99**
 Set/12
 Upper Large #1 (301-1001)
 Lower Large #2 (301-1002)
 Upper Medium #3 (301-1003)
 Lower Medium #4 (301-1004)
 Upper Small #5 (301-1005)
 Lower Small #6 (301-1006)
 Partial #7 (301-1007)
 Partial #8 (301-1008)
 Partial Upper #9 (301-1009)
 Partial Lower #10 (301-1010)



Disposable Impression Trays. Signature
 Same as Vista!
 1-11 **\$4.99**
 Buy 12 and up **\$4.49**
 Upper Large #1 (971-0011)
 Lower Large #2 (971-0012)
 Upper Medium #3 (971-0013)
 Lower Medium #4 (971-0014)
 Upper Small #5 (971-0015)
 Lower Small #6 (971-0016)
 Partial #7 (971-0017)
 Partial #8 (971-0018)
 Anterior Upper #9 (971-0019)
 Anterior Lower #10 (971-0010)



Trays - Stainless Steel, Non Perforated
Signature. Can be repeatedly sterilized by any method Resist tarnish and corrosion.
 Set/6 (373-9916) **\$49.95**
 Set/8 (373-9918) **\$59.95**
 Set/10 (373-9910) **\$69.95**



Trays - Stainless Steel, Perforated
Signature. Stainless steel impression trays are brilliantly finished, for crisp clean look.
 Set/6 (373-0006) **\$49.95**
 Set/8 (373-0008) **\$59.95**
 Set/10 (373-0010) **\$69.95**
 Set/8 Edentulous (373-0088) **\$89.95**



Trays - Three Way. Sultan
 Available in sideless, quadrant, posterior & anterior.
 1-3 **\$39.95**
 4-up **\$38.95**
 Box/35
 Anterior (412-1644)
 Quadrant (412-8626)
 Box/50
 Posterior (412-7536)
 Sideless (412-8713)
 Assorted -10 of each
 Box/40 (412-6048)



Bite Registration Trays. Signature
 1-5 **\$14.95**
 6-up **\$13.95**
 Box/30 Full Arch (431-1988)
 Box/35 Quadrant (431-1688)
 Box/35 Anterior (431-1788)
 Box/40 Assorted (431-1888)
 Box/50 Posterior (431-1588)
 Box/50 Sideless (431-1889)



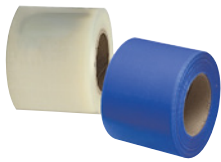
Premier Triple Trays. Signature
 Box/40 Quadrant (458-0313) **\$19.95**
 Box/35 Anterior (458-0314) **\$19.95**
 Box/48 Posterior (458-0315) **\$19.95**
 Box/48 Sideless (458-0316) **\$19.95**
 Box/40 Assorted (458-0317) **\$19.95**



Triple Trays. Premier Dental
 Box/40 Quadrant (478-0737) **\$45.95**
 Box/35 Anterior (478-0143) **\$45.95**
 Box/48 Posterior (478-4241) **\$45.95**
 Box/48 Sideless (478-1037) **\$45.95**
 Box/40 Assorted (478-3450) **\$45.95**



Spacer Trays. GC America
 Uppers - Small #7D (333-6969) • Medium #4D (333-3901) • Large #1D (333-3761)
 Lowsers - Small #22D (333-0744) • Medium #21D (333-4105) • Large #20D (333-0805)
 Quadrant - Lower Right/Upper Left #30D (333-6977) • Lower Left/Upper Right #31D (333-0175) • Anterior #32D (333-0262)
 All trays: **\$8.99**



Universal Barrier Film. Signature

Used for surface disinfections. For fluid-proof areas that are difficult or impossible to clean, disinfect or sterilize. 4" x 6" in size. Box/1200 Sheets.

- 1-3 **\$16.95**
- 4-up **\$15.95**
- Clear **(435-0002)**
- Blue **(435-0003)**



Full Chair Covers

- (355-0101)** 29" x 80" Box/125 **\$39.95**
- (355-0150)** 48" x 56" Box/150 **\$39.95**



Half Chair Covers

- (355-0505)** Box/200 **\$23.95**
- 27 1/2" x 24"



Headrest Covers - Non Woven

- Non Woven. Pack of 500
- (201-7104)** Regular 10" x 10" **\$59.99**
- (201-8627)** Large 10" x 13" **\$49.95**
- 1-3
- 4-up



Headrest Covers

- Clear plastic covers. Box/250.
- (033-6146)** Regular 11 1/4" x 10" **\$10.95**
- 1-3 **\$9.95**
- 4-up **\$9.95**
- (033-2201)** Large 14 1/2" x 10" **\$11.95**
- 1-3 **\$10.95**
- 4-up **\$10.95**



Handpiece Sleeve

- (431-0108)** 1 1/2" x 8". **\$14.95**
- Box/500



Syringe Sleeves. Signature

- (431-0500)** Box/500. **\$8.95**
- 1-5 **\$7.95**
- 6-up

Brixton Air & Water Syringe Sleeves

- (200-8965)** Box/500. **\$14.95**



Tray Covers

- Box/1000. Ritter size B.
- 1-4 **\$23.95**
- 5-up **\$22.99**
- Blue **(722-9336)**
- White **(722-0934)**
- Mauve **(722-4592)**



Tray Sleeves

- Perfect for instrument trays. Box/500.
- Size B 10.5" x 14" **\$21.95**
- (777-2003)** **\$20.95**
- 4-up
- Size A: 11 5/8" x 14 1/2" **\$24.95**
- Box/500 **(435-0500)**



T-Style Sleeves

- (227-9623)** Fit most T-Style lamps. Box/500. **\$17.95**
- 1-3 **\$15.95**
- 4-up **\$15.95**



X-Ray Sleeves. Signature

- (279-0030)** 15" x 26". Roll/250 **\$24.95**
- 1-3 **\$23.95**
- 4-up



Bouffant Caps

- Pkg/100.
- 21" Clear **(971-0021)** **\$12.95**
- 21" Blue **(971-0221)** **\$12.95**
- 24" Clear **(971-0024)** **\$14.95**
- 24" Blue **(971-0224)** **\$14.95**



CSR Wraps

- Case/100.
- 12" x 12" **(971-1212)** **\$17.95**
- 15" x 15" **(971-1515)** **\$20.95**
- 18" x 18" **(971-1818)** **\$23.95**
- 24" x 24" **(971-2424)** **\$47.95**



Sensor Sleeves

- Box/500 **(201-7500)** **\$14.95**



Birex Biotrol

- Introductory Kit-4-pack **(333-0086)** **\$22.99**
- Introductory Kit-24-pack **(333-0087)** **\$114.99**
- Refill Package (Box/4) **(333-0088)** **\$19.99**
- Refill Package (Box/24) **(333-0089)** **\$108.99**
- Refill-Operatory Package (Box/48) **(333-0090)** **\$203.99**
- Refill-Clinic Package (Box/144) **(333-0091)** **\$543.99**
- Spray Bottle **(333-0092)** **\$12.99**



CaviCide
(878-0113) Cavicide Disinfectant 1 Gallon.
 1-2 **\$34.95**
 4-up **\$33.95**



Weltex
(333-0207) Surface Disinfectant, 1 Gallon.
 1-2 **\$24.95**
 4-up **\$23.95**



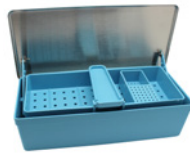
Protectop 28
(333-0206) 2.5% Glutaraldehyde sterilizer solution. EPA Registered. 1 Gallon.
 1-2 **\$25.95**
 3-up **\$24.95**



Coecide XL
(878-0114) 2% Glut. Alkaline Gal/Bt
 1-2 **\$29.95**
 3-up **\$28.95**



Germicide Sterilizer
 An ideal germicide tray for sterilizing instruments. Constructed of durable high impact plastic. Tray automatically lifts and drains when cover is opened. Removable folding tray handle allows easy accessibility for instruments.
 Stainless steel cover **(221-1427)**
 Smoked plastic cover **(221-1428)**
 1 - 2 **\$44.95**
 3 - up **\$43.95**



Germicide Trays
 For cold sterilization and disinfecting of instruments. Includes bur tray. **\$44.95**
 Blue **(200-8485)** Red **(200-8480)**
 Green **(200-8481)** White **(200-8482)**
 Mauve **(200-8483)**



Glasses
(416-0001) Curing light protective glasses
 Filter out over 99% of harmful light.
 Will not fade in normal use.
 1-2 **\$19.95**
 3-up **\$17.95**

Premium Goggle
(296-0811) Comfortable alternative for eyes protection.
 1-2 **\$5.95**
 3-up **\$4.95**



Gloves
 Signature. Disposable fits either hand - ambidextrous. Low Chemical residues through longer leaching, improve shelf life.
 Box/100. 1.5 AQL
 Lightly Powdered. 1 - 9
 10-up **\$8.95**
 XS **(393-1101)** **\$7.95**
 S **(393-1102)**
 M **(393-1103)**
 L **(393-1104)**
 Powder Free. 1-9
 10-up **\$9.95**
 XS **(393-2201)** **\$8.95**
 S **(393-2202)**
 M **(393-2203)**
 L **(393-2204)**



Nitrile Gloves
 Box/100. Powder Free.
 1-19 **\$11.99**
 20-up **\$10.95**
 S **(394-1101)** M **(394-1102)** L **(394-1103)**
 Vinyl Powder Free.
 1-19 **\$7.99**
 20-up **\$6.99**
 S **(394-1111)** M **(394-1112)** L **(394-1113)**
 Vinyl Powdered.
 1-19 **\$6.50**
 20-up **\$5.99**
 S **(394-1121)** M **(394-1122)** L **(394-1123)**



Gowns
 Isolation gowns. Signature. Box/50. Tie back. Knit cuff! **\$59.95**
 Blue **(971-0040)** Pink **(971-0041)**
 Green **(971-0044)**



Lab Coats
 Box/10 **\$19.95**
 5-up **\$18.95**
 S **(207-5130)** M **(207-5132)**
 L **(207-5133)** XL **(207-5134)**

Lab Jackets
 Box/10 **\$18.95**
 5-up **\$17.95**
 S **(207-5141)** M **(207-5142)**
 L **(207-5143)** XL **(207-5144)**



X-Safe Jackets
 Multi Color, Medium. Pkg/10
(333-0070) Small **\$29.95**
(333-0071) Medium
(333-0072) Large
(333-0073) X-Large
 Specify color: Ciel Blue, Sky Blue, Rose



Tartar and Stain Remover
(333-0040) 1 Gallon. **\$21.99**



Harvey Vapo-Sterlie
(065-5700) Barnstead / Thermolyne. 1 liter bottle. Box/4.
 1-2 **\$49.95**
 3-up **\$48.95**



Infectious Waste Collection Bags. Signature
(200-9305) 15" x 9" x 24". Box/100
\$29.95



Ear Loops Face Mask
3 ply. Splash resistant. Soft non-glass. Breath easier. 3 folding. Latex free. Box/50.
1-11 \$6.95
12-23 \$5.50
24-up \$4.95
Blue (410-0050) Pink (410-0051)



Mask Earloop with Eye Shield. Signature
(888-3021) 99.6 % BFE at 1 micron. Pkg/25.
1-2 \$31.95
3-up \$29.95



Mask Molded Face. Signature
Soft, non irritating. Glasses do not fog. Fiberglass free. Bag/50.
1-19 \$7.95
20-up \$6.95
Blue (194-1050) Pink (194-2050)



Isofluid Face Masks. Crosstex
Latex free. Box/50.
1-9 \$12.95
10-up \$11.95
Blue (207-8257)
Pink (207-2100)



Tie-on Masks
(333-0041) Blue. Box/50 \$9.99



Surgical Face Mask. Crosstex
(888-3022) Box/50 \$54.95



Op-d-op
(200-9800) Blue Visor \$54.95



Face Shield
(200-9803) Yellow \$29.95
(200-9804) White \$29.95
(200-9805) Blue \$29.95



SonicTAB. Signature
(740-0014) UltraSonic Enzyme Cleaner. New Anti-Corrosive DFormula. Fast & Easy. Fresh Mint. Cleaning tabs. 2 tablets per gallon. Box/64.
1-2 \$54.95
4-up \$49.95



Sani Cloth Plus
(367-0720) 1-11 \$10.95
12-up \$9.95



Self-Seal Autoclave Bags. Signature
(201-5915) Self seal for steam or chemical. Box/1000 \$59.95



Sterilization Pouches. Signature
Peelable. Self-sealing. Box/ 200 2 3/4" x 9" (333-2880)
1-15 \$8.95
16-up \$7.95
3.5" x 10" (194-3100) 1-15 \$7.95
16-up \$6.95
3.25" x 6" (194-3101) 1-15 \$6.95
16-up \$4.95
5.25" x 11" (333-2990) 1-15 \$13.95
16-up \$10.95
7.5" x 13" (333-2992) 1-15 \$21.95
16-up \$16.95



Sterilization Tubing. Signature
2" (201-2224) 1-5 \$7.95
6-up \$6.95
3" (201-2225) 1-5 \$8.95
6-up \$7.95
4" (201-2226) 1-5 \$9.95
6-up \$8.95
6" (201-2227) 1-5 \$14.95
6-up \$13.95



Sterilizer Indicator Tape. Signature
(200-4715) 60 yd. per roll.
1/2" \$6.95

Amalgam Carriers. Signature

Stainless steel.
 1-3 **\$14.95**
 4-up **\$13.95**
 Double End



Medium-Mini (099-3141)



Medium-Large (099-3145)



Medium-Jumbo (099-3150)



Large-Jumbo (099-3155)



Gun Type (099-2125)

Amalgam Condensers. Signature

Stainless steel **\$7.95**
 Vertical (099-3409)



Black 0/1 Smooth (099-1001)
 Black 0/1 Serrate (099-1002)



Black 1/2 Smooth (099-4001)
 Black 1/2 Serrate (099-1212)
 2/3 Smooth (099-4003)
 Tanner # 1 (099-3001)



Tanner # 2 (099-3002)



Hollenback Smooth H1 (099-7801)



Hollenback Smooth H2 (099-7802)



Hollenback Smooth H3 (099-7803)



Hollenback H4 (099-4144)



Mortenson #2 (099-3317)

Packing Instruments (971-0144)

\$5.95



Articulating Paper Holder. Signature (099-9944)

Stainless steel.
 1-3 **\$6.95**
 4-up **\$5.95**

Aspirating Syringe. Signature

Stainless steel.
 1-3 **\$14.95**
 4-up **\$13.95**



Type "A" (099-6222)



Type "C" (099-6333)

Bone File. Signature

Stainless Steel **\$14.95**
 #11 (099-6211)



#12 (099-6212)



Bur Cleaning & Scratch Brush. Signature

1-3 **\$6.95**
 4-up **\$5.95**



Without handle (005-7430) **\$6.95**

Burnishers. Signature

Stainless steel. All styles available.
 1-3 **\$7.95**
 4-up **\$6.95**



#25-26 (099-7345)



#26-27 (099-2627)



#28-29 (099-2829)



#29-30 (099-2930)



#27-30 (099-2730)



#27-29 (099-2729)



#21B (099-1021)



#21 (099-0021)
 #29 (099-0029)

Carvers. Signature

Stainless steel.
 1-3 **\$7.95**
 4-up **\$6.95**
 Wax Carvers



Hollenback #3 (099-3303)



Hollenback #3S (099-1313)



Ward #1 (099-0246)

Cleoid Discoid. Signature

Stainless steel.
 1-3 **\$7.95**
 4-up **\$6.95**



3/6 (099-0036)



89/92 (099-8992)



Composite Instruments. Signature

White for autocurable, clear for photocurable.

1-4 **\$6.95**
5-up **\$5.95**

Clear
Placing #1 **(301-3301)**
Placing #2 **(301-3302)**
Placing/plunger - L #3 **(301-3303)**
Placing/plunger - S #4 **(301-3304)**
Placing/plunger - S #24 **(301-3324)**

White
Placing #1 **(301-5501)**
Placing #2 **(301-5502)**
Placing/plunger - L #3 **(301-5503)**
Placing/plunger - S #4 **(301-5504)**
Placing/plunger - S #24 **(301-5524)**

Cotton Pliers. Signature

Stainless steel.

1-3 **\$5.95**
4-up **\$4.95**



Meriam **(099-5591)**



College # 317 **(099-0317)**



Self Locking Pliers Serrated **(099-5597)**

Crown Removers. Signature

Stainless steel.

1-3 **\$29.95**
4-up **\$24.95**



Morell w/3 attachments **(971-0003)**



1 attachment **(099-5581)**



2 attachment **(099-5582)**



3 attachment **(099-5583)**

Currettes. Signature

Stainless steel. All sizes available.

1-3 **\$7.95**
4-up **\$6.95**

McCalls

11/12 **(786-9370)**

13/14 **(099-7514)**

17/18 **(099-3938)**

Gracey. Signature

1/2 **(099-7012)**

3/4 **(099-7034)**

5/6 **(099-7056)**

7/8 **(099-7078)**

9/10 **(099-7910)**

11/12 **(099-1112)**

13/14 **(099-1314)**

Bone Curettes.

Lucas. Signature

85 **(099-7085)**

86 **(099-7086)**

Cryer. Signature

Stainless steel.

1-3 **\$12.95**
4-up **\$11.95**

44 **(099-8844)**

45 **(099-8845)**

Elevators. Signature

Stainless steel.

1-3 **\$12.95**
4-up **\$11.95**

1L **(099-2011)**

1R **(099-2001)**

4L **(099-9004)**

4R **(099-9014)**

34 **(099-2034)**

34S **(099-2134)**

46 **(099-0046)**

79 **(099-2379)**

80 **(099-2380)**

81 **(099-8881)**

301 **(099-2301)**

302 **(099-2302)**

303 **(099-2303)**

304 **(099-2304)**

INSTRUMENTS



Heidbrink Elevators- Single End
79 (099-3212)



80 (099-3213)



Periosteal Elevators
Seldin # 23 (099-5023)



Molt # 9 (099-5099)

Winter Elevators



11L (099-2611)



11R (099-2612)



12L (099-5045)



12R (099-5067)

Set of 2 handles & 10 points (099-1171)
2, # 4L, # 4R, # 8, # 34 # 34S, # 81, # 301,
302, # 303 **\$ 49.95**

Endo Spoon Excavators
Signature. Stainless steel **\$ 7.95**



31L (099-1231)



89/90 (971-8990)

Gillet



17 (099-1217)



18 (099-1218)

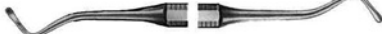


19 (099-1219)

White



14 (099-1214)



17 (099-1317)



18 (099-1318)



19 (099-1319)

Explorers. Signature

Stainless steel. Single and double end available. 1-3 **\$ 5.95**
4-up **\$ 4.95**



5 (099-4305)



17 (099-4217)



23 (099-4323)



23/6 (786-6870)



Root Canal Explorer
DG16 (099-4316) 1-3 **\$ 7.95**
4-up **\$ 6.95**

Filling Instruments. Signature

Stainless steel **\$ 5.95**



1 white (099-9301)



1A white (099-9401)



3 (099-7703)



4 (099-7704)



Woodson

2 (099-7702)



3 (099-7733)



Calcium Hydroxide Placer (099-6002)



Hydroxide Placer (099-6001)

Forceps American Pattern. Signature
Stainless steel.

1-3 **\$39.95**
4-up **\$34.95**



150 (099-1150)



151 (099-1151)



1 (099-1111)



101 (099-3101)



17 (099-0717)



88R (099-9988)



88L (099-0088)



69 (099-1069)



18R (099-9918)



18L (099-1118)



65 (099-9965)



222 (099-0222)



210H (099-7132)



16 (099-1016)



23 (099-9123)



53R Upper Right Molars (099-0053)



53L Upper Left Molars (099-0153)

American Pattern Children



16S Cow Horn (099-9916)



150S Universal (099-9150)



151S Universal (099-9151)

Forceps English Pattern



22 Lower molars, universal (099-5322)



1 Upper central & canines (099-9131)

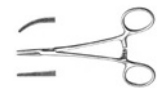


17 Upper molars right (099-0117)



18 Upper molars left (099-0118)

Forceps - Hemostatic. Signature
Stainless steel \$9.95



Halsted Mosquito
5" Straight (099-4444) \$7.95
5" Curved (099-5555)



Kelly 5
1/2 Straight (099-4774) \$7.95
1/2 Curved (099-4775)

Gauges. Signature
Stainless steel \$15.95



Crown gauge Inwanson 2 slide scale
For metal (099-8752) \$19.95
For wax (099-8753) \$19.95



Boley gauge (099-4429) \$19.95



Instrument Mat
Hold 12 instruments. Can be used on trays, brackets, tables, counter tops, storage drawers, lab benches, and many others. May be chemically disinfected and steam autoclaved. \$19.95

White (221-0010)
Yellow (221-0002)
Beige (221-0009)
Blue (221-0001)



Lateral Condensers. Signature
Stainless steel \$7.95
0.30 D-11T (099-0480)



Matrix Band Rolls. Signature
Finest matrix stainless steel rolls supplied in a dispensing box. \$8.95
Roll of 10 feet, Gauge 0.0015
3/16" Approx. 5 mm (300-0316)
1/4" Approx. 6 mm (300-0014)
5/16" Approx. 7 mm (300-0516)

Matrix Band Tofflemire. Signature
Manufactured from the highest quality. Medical grade stainless steel. Available in Gauge 0.0015 (Other Gauges available on request). Pkg/12.

1-3 \$1.19
4-up \$0.99



1 - 0.0015" (358-0015)



2 - 0.0015" (358-1502)



3 - 0.0015" (358-1503)



13 - 0.0015" (358-1513)



Matrix Retainers. Signature
Stainless steel.
1-3 \$8.95
4-up \$7.50
Tofflemire type
Universal (099-9992)



Mirrors - FRONT SURFACE MIRRORS
Signature. Stainless steel. Finest quality rhodium front surface mirror provides the sharpest, distortion free reflection. Unsurpassed durability through repeated sterilizations. Permit every type of sterilization, including all chemicals, steam and dry heat.

1-3 \$17.95
4-up \$15.95

Box of 12
4 Cone Socket (221-3004)
4 Simple Stem (221-2004)
5 Cone Socket (221-3005)
5 Simple Stem (221-2005)
6 Cone Socket (221-3006)
6 Simple Stem (221-2006)



Mirrors - Handles. Signature
\$2.00
Octagonal, cone socket (099-9902)
Octagonal, simple stem (221-9901)



Mirrors - PLANE SURFACE. Signature
Rear reflective surface mirrors are quality constructed from stainless steel and highest quality mirror glass. smooth finish for patient comfort. Sterilized by chemical, or steam autoclave. Durability assured through repeated sterilization.
Box of 12 **\$12.95**
5 Cone Socket (405-0013)
5 Simple Stem (405-0012)

Mouth Gags. Signature
Stainless steel **\$29.95**



Molt 11 cm child (099-1501)



Molt 14 cm adult (099-1502)



Mouth Prop
Made of the finest pure gum rubber. Special finger channel for easy insertion. Fully autoclavable. Non toxic. Taste & odorless. Made in USA **\$8.95**
Small child (221-5900)
Child (221-5952)
Adult (221-5999)



Economically Priced Mouth Prop
(311-0500) Imported. Set of 3: Small, Medium & Large. **\$14.95**



Mouth Wider - Lip retractor
(340-4678) Adult
(431-7709) Child
Plastic retractor that helps give you an unobstructed view of the oral cavity. Its spring expansion will retract both lips away for the operative area. Very useful for bonding orthodontic brackets to anterior teeth and placing Composite Restorative Material. Made of polycarbonate plastic material, very flexible. **\$6.95**

Needle Holders. Signature
Stainless Steel **\$5.95**



Mathieu 5 1/4" (099-0415)
Mathieu 6 1/4" (099-0420)



Mayo-Hegar 5" (099-0405)
Mayo-Hegar 6" (099-0406)

Periodontal Pocket Probers. Signature
Stainless steel.
1-3 **\$5.95**
4-up **\$4.95**



William single end (099-0742)



Goldman fox double end (099-0758)



Williams 23 Probe Explorer (099-4749)



Plaster Nipper. Signature
(099-3183) **\$39.95**



Plastic Cheek Retractor
(047-9931) Very useful for retraction of lips. Specially designed for filling and taking photos of the anterior teeth. Set of 2. **\$6.95**

Pliers - Orthodontic & Laboratory
Signature. Stainless steel. **\$11.95**



How # 110 (099-9110)



Jelenko 16 cm (099-2100)



Angle # 139 (099-9139)



104 Flat nose (099-8104)



Aderer 14 cm (099-9100)



112 Abell cup jaw (099-9112)



114 Johnson (099-9114)



115 Reynolds (099-9115)



137 Gordon (099-9137)



122 (099-9122)



101 Peeso (099-9101)



Adered 3 prongs 13 cm (099-9201)



McKellog Large 16 cm (099-3767)



Young 13 cm (099-3755)



Pluggers. Signature
Stainless steel. All styles available.
1-3 **\$7.95**
4-up **\$6.95**
1/3 (099-1013)
5/7 (099-0507)
9/11 (099-0911)

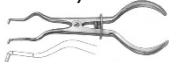


Rongeurs. Signature
Stainless Steel **\$39.95**
(099-8201) Blumenthal 6", 30 standard

Rubber Dam Forceps. Signature
Stainless Steel **\$24.95**



Lightweight, smooth, rubber dam clamp forceps (099-8888)



Brewer rubber dam clamp forceps (099-5448)



Rubber Dam Frames. Signature
Stainless Steel **\$7.95**

Adult 6" (099-1116)
Child 5" (099-1115)

Rubber Dam Punches
Signature. Stainless Steel **\$29.95**



Lightweight (099-7171)



Ainsworth (099-0599)

Scalers. Signature
Stainless steel.
1-3 **\$6.95**
4-up **\$5.95**



30/33 (099-3033)



15/15 (099-0101)



U 15/30 (099-3537)



U 15/33 (786-9480)



CK6 (099-5170)



H6/7 (099-3567)



Jacquette Scalers
2YS/3YS (201-8693)
1-3 **\$6.95**
4-up **\$5.95**



Set-up Trays. Signature
1-5 **\$4.95**
6-up **\$3.95**

PLAIN TRAYS: 12 3/4" x 9 4/16" x 7/8"

Beige (311-1107)
Blue (301-2222)
White (301-1111)
Gray (311-1114)
Mauve (311-1106)
Yellow (311-1109)
Green (301-3334)

DIVIDED COMPARTMENT TRAYS

Blue (311-2510)
White (311-2520)
Gray (311-2530)
Beige (311-2540)
Mauve (311-2550)
Yellow (311-2560)
Green (311-2570)

Spatulas & Knives
1-3 **\$7.95**
4-up **\$6.95**

Plaster Knives



6R (099-7795)



7R (099-7797)



12 (099-4112)

Plaster Spatulas



14R (099-3314)



11R (099-3311)



10R (099-3310)



8R (099-3908)



3R (099-3333)

Cement Spatulas



24A (099-3024)



22/24 (099-2224)



20/22 (099-7770)



313 (099-3313)



322 (099-3322)



324 (099-3324)



Surgical Blades - Carbon Steel. Signature
Sterilized by Gamma Radiation of 2.5 R-Rads. Individually package in pool open aluminum foil. Shelf life 5 years after the date of sterilization. Sizes and shapes go according to the word standards set. The sterile carbon steel surgical blades meet U.S. Federal specification GG-H80. Non toxic. Individually packed with V.P.I. Paper on both sides of the blades to protect against rust. Blades are manufactured under standard GMP. The fitness of the blades is Universal, allowing blades to fit standard handles all over the world. Blades are found to be free of any burs or snag, and to have sufficient strength not to break under normal lateral pressure. Box of 100 sterile blades wrapped in foil paper.

1-3 **\$19.95**
4-up **\$17.95**
10 (219-0010)
11 (219-0011)
12 (219-0012)
15 (219-0015)
20 (219-0020)
21 (219-0021)
22 (219-0022)
23 (219-0023)
24 (219-0024)
25 (219-0025)
15C (219-0115)
12B (219-0112)



Disposable Scalpel
Sterile Stainless Steel surgical blade with plastic handle in single peel pouch. 10/box
#15 (219-0005)
#12B (219-0006)

\$11.95

Surgical Blades Handles. Signature

Stainless Steel.
1-3 **\$5.95**
4-up **\$4.95**



3 (219-0003)



4 (219-0004)

Scissors. Signature

Stainless Steel.
1-3 **\$6.95**
4-up **\$5.95**



Kelly 6 1/4 straight smooth (099-1247)



Kelly 6 3/4 curved smooth (099-1249)



Iris 4 1/2 straight (099-1234)



Iris 4 1/2 curved (099-1235)



Mayo 5 1/2 straight (099-9993)



Littauer 4 1/2 (099-3152)



Wagner 4 1/4 straight (099-1256)



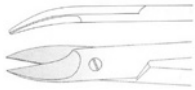
Suture scissors straight 3 1/2 (099-1215)

Scissors - Crown & Bridge Scissors. Signature. Stainless Steel.

1-3 **\$6.95**
4-up **\$5.95**



Straight 12 serrated blade (099-5533)



Curved 12 cm serrated blade (099-5544)



Tongue Depressor. Signature (099-0485)
Universal (Minnesota Retractor)

\$19.95



Triple Syringe

Airwater syringe with metal tip (047-0003) **\$99.95**
Metal Tip (047-7777) **\$6.95**



Dispos-a-trap

Reliable and sanitary alternative to metal and plaster traps.

Complete-unit 3.5 Gal. (333-0042) **\$46.99**

Complete-unit 5 Gal. (333-0043) **\$47.99**

Refill - 3.5 (333-0044) **\$20.99**

Refill - 5 (333-0045) **\$22.99**

Wax and Modeling Instruments. Signature

Stainless Steel. **\$5.95**



1 Fahnenstock (099-5000)



2 Fahnenstock (099-5001)



Le Cron (099-3460)



31 Gritman (099-3470)



7A (099-3471)



7 Beale (099-3498)



Roach (099-3748)

P. K. Thomas



1 (099-8001)



2 (099-8002)



3 (099-8003)



4 (099-8004)



5 (099-8005)

Acrylic Stones

Heat less. Clog-free trimming of acrylics. Gives smooth surfaces. **\$2.50/each**



White Stones

RD # 1 (345-9111)
RD # 2 (345-9222)
RD # 3 (345-9333)
RD # 5 (345-9555)



Alcohol Torch
(047-7799)

\$14.95



Bunsen Burner. Buffalo
(200-4007) Natural Gas only.

\$24.95



Articulators - Chrome / Plated
(345-9000) Heat less. Clog-free trimming of acrylics. Gives smooth surfaces. Full arch articulator. **\$9.95**



Base Former
(311-0018) Set of 3: Small, Medium & Large. Each size with his own color. **\$8.95**
(400-0005) Set of 5: Extra Small, Small, Medium, Large & Extra Large. **\$14.95**



Base Plates

Our shellac base plates are one of the best manufactured in U.S.A. Easily manipulated when heated. When chilled becomes hard without warping. Single or double thickness. Box/400. **\$199.95**
Regular Upper (164-1400)
Regular Lower (164-2400)



Bite Block Wax Forming

(400-9902) Set of 2. One for making wax bite stick, and another for making wax bite horseshoe. Very flexible, very easy to remove the wax from the model. Many years of use. **\$14.95**



Burley Arbor

(099-1928) For use with emery cloth band to dress down denture. Simple adjustment by turning the knurled nut in the middle of the arbor. **\$11.95**



Butane Lab Burner

7 hours of clean flame. (200-8842) **\$49.95**
5.5 oz refills (200-8188) **\$9.99**



Butane Micro Torch

(340-0005) Applications: auto repairing, jewelry repairing, camping & B.B.Q., dental, medical & laboratory, electrical & electronic repairing. Plastic pipe bending. Melting gold, silver copper & small rods. Fusing & melting. Plastic & rubber materials. **\$49.95**



Chuck # 200

For lab. engine table. (099-0200) **\$16.95**



Dentstone

(082-0099) Modern material. Yellow. 50 lb. **\$49.95**



Lab Plaster

(669-0573) Modern material. 50 lb. **\$44.95**



Denture Flask

Forged in bronze and built to last. Flask halves fit tightly together with stainless steel guide pins. **\$79.95**

Upper (082-9955)
Lower (082-9966)



Aluminium Oxide

50 microns. 1 lb. (047-7800) **\$11.95/pound**



Dowel Pins

All brass pins. Bag/1000
1 (225-0001) **\$59.95**
2 (225-0002) **\$59.95**



Duplicating Material - All Purpose

No wash required. Used with all stone and investment models. Quality reversible material. Manufactured using only the finest premium raw materials. Extremely accurate.

1 lb bag (301-0001) **\$7.95**
1 Gallon (301-9991) **\$34.95**
5 Gallons (301-0005) **\$109.95**



Electric Micro-Motor
The high quality Micro-Motor. Advanced speed system 0-35,000 RPM. Forward and reverse turning available. On/off foot switch for easy use. Foot control speed. **\$295.00**
With laboratory handpiece (239-2042)
With doriot handpiece (239-2041)



Felt Cones
For use with threaded mandrel or tapered spindle. Pointed.
1 - 1" x 1/2" (077-0000) **\$1.50**
2 - 1 1/2" x 3/4" (077-0002) **\$2.59**
3 - 2" x 1" (077-0003) **\$3.95**



Felt Wheels (082-1316) Medium. For Chrome.
1" x 3/16". Bag/100 **\$15.95**



Flexibowls - Green
Flexible mixing bowls. A self cleaning bowl widely used by dental technicians. Plaster, stone, investment and alginate will not stick to this mixing bowl. Just flex and wipe with a damp cloth. Not suitable for mixing acrylics.
Small (082-4578) **\$4.95**
Medium (082-6600) **\$5.95**
Large (082-8002) **\$6.95**
Extra large (082-9905) **\$7.95**



Fox Plane
Made of plastic.
(311-0016) **\$11.95**



Laboratory Brushes
B-4 (207-0004) **\$2.50**
B-12 (207-0012) **\$2.99**
B-20 (207-0020) **\$2.99**
B-25 (207-0025) **\$2.99**
B-27 (207-0027) **\$4.99**
B-29 (207-0029) **\$2.99**



Lab Trays. Signature
Plastic. Includes clip for holding prescription.
1-5 **\$3.50**
6-up **\$2.99**
Blue (976-9412)
Yellow (976-9414)
Green (976-9415)
White (976-9416)



Lingual Bar
Stainless steel lingual bars. End have holes for positive retention. Bag/12 **\$14.95**
Small (099-9501)
Medium (099-9502)
Large (099-9503)
X-Large (095-9504)

Mandrels
Steel Mandrels. The finest of the industry. Extremely concentric, gives extra durability to all fragile separating disks. Call for price



HP (233-1144)



RA (233-0144)



For rubber point (233-2233)



Reinforced (233-2144)



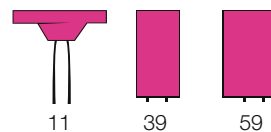
Model Trimmer Wheel
Model trimmer wheel are reversible.
Wheel 10" (208-0010) **\$14.95**
Wheel 12" (082-0012) **\$17.95**



Model Trimmer
Water tight "hinged" cover, tilting work table, 1/3 HP.
10" (333-0421) **\$375.99**
12" (333-0422) **\$399.99**



Lathe Full Side
Polishing and grinding lathe, for use on top of Laboratory bench. 2 speed, R & L Chuck removers. (333-0423) **\$265.99**



Mounted Stones
For chrome cobalt and ceramic. Non contaminating pink.
For chrome-cobalt and ceramic.
Box/72 **\$29.95**
11 (345-0111)
39 (345-0139)
59 (345-0159)



Muslin Buffs
Our muslin buffs are uniform in size and thickness. Each ply is carefully selected and fully cut. Stitching is uniform and will not fall out.
2" x 30 ply (182-0230) **\$1.95**
3" x 24 ply (182-0324) **\$1.95**
3" x 30 ply (182-0330) **\$1.95**
4" x 24 ply (182-0424) **\$1.95**
4" x 30 ply (182-0430) **\$2.50**
4" x 42 ply (182-0442) **\$2.95**
5" x 30 ply (182-0530) **\$3.95**



Pumice. Signature

100% pure italian powdered pumice.
 Fine 1 lb (077-4401) **\$9.95**
 5 lb (077-4405) **\$17.95**
 Medium 1 lb (077-5501) **\$9.95**
 5 lb (077-5505) **\$17.95**
 Coarse 1 lb (077-6601) **\$9.95**
 5 lb (077-6605) **\$17.95**



Separating Medium

Signature. A special formulated multipurpose liquid separator. An excellent Tin Foil substitute, used as a separator between stone and acrylic. Available in pink.
 1 Gallon (077-8001) **\$59.95**
 32 oz (077-8032) **\$29.95**
 16 oz (077-8016) **\$14.95**



Rouge

For final polishing of gold.
 1/8 lb bar (077-0018) **\$6.95**
 1 lb bar (077-0001) **\$14.95**



Rubber Wheel & Rubber Points - Black
 (048-0005) 7/8" x 1/8" Silicone carbide, for finishing and polishing chrome cobalt.
\$19.95

(048-0954) Rubber points clasp polisher
 15/16" x 1/4". Box/100. **\$19.95**



Rubber Wheel - White
 (048-9005) 7/8" x 1/8" Aluminum oxide, soft and flexible for ultra fine polishing porcelain and gold, non contaminating.
\$29.95

Spatulas

1-4 **\$7.95**
 5-up **\$6.95**



Plaster Spatulas

3R (099-3333)
 8R (099-3908)
 10R (099-3310)
 11R (099-3311)
 14R (099-3314)



Cement Spatulas

24A (099-3024)
 # 22/24 (099-2224)
 # 20/22 (099-7770)
 # 313 (099-3313)
 # 322 (099-3322)
 # 324 (099-3324)



Plastic Spatulas

Plastic spatulas for alginate. Different colors to match the same color of the flexibowls.

\$1.99

Yellow (400-2245)
 Blue (400-2246)
 Red (400-2247)



Spring Compress

(082-0002) Made of manganese bronze casting with heavy top and bottom pressure plates. Stainless steel springs. Complete with wrench and handle.
\$129.95



Stone Chuck

(099-4439) Brass chuck fits stone 1/4" hole
 1-3/4 length. **\$11.95**



Tapered Spindle

For brush wheels and buffs.
 3 1/2" length **\$11.95**
 Left (099-7700)
 Right (099-8800)



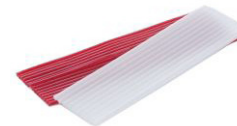
Vacuum Forming Machine. Signature
 (971-0033) Complete w/color swatches and starter packages.

\$395.00



Vibrator. Signature

(971-0034) Very quiet, with preset thermostat.
\$69.95



Wax - Utility Wax

A perfect wax for post damming extending and building up impression trays, etc. The white utility wax is specially useful to alleviate the discomfort that just received an orthodontic appliance. Easily worked, yet retains desire shape. Adheres to itself and other types of waxes without heating.
 Box/1 lb White (245-0003) **\$14.95**
 Box/1 lb Red (245-0004) **\$13.95**



Wax Heater

(345-1115) Controlled temperatures from 120° F to 270° F. Thermostatically controlled. Fast heating. 3 compartment with teflon coating.
\$69.95



Wax-Bite Blocks Occlusal Rims
(245-2224) Box/100. **\$49.95**



Wax - Pink Waxes. Signature
(245-1125) Wax "All Season Pink Wax" Excellent for setups, taking bites and waxing up. Hold teeth firmly. Sets hard without brittle's. Boils out cleanly. Economically priced. Box/5 lb. **\$49.95**



Wax - Sticky Wax
Used in linking stone models prior to articulation. Also used for fastening bridges and clasps prior investing. Used whenever work surfaces must be joined temporarily without changing the contours. Strong adhesive properties (excellent for acrylic). Flow quickly. Long working time.
Box/1 lb Sticks (245-1010) **\$29.95**
Box/1 oz Stick (245-1001) **\$2.25**



Dappen Dishes - Glass. Signature
All colors available.
1-11 **\$2.95**
12-up **\$2.50**
Clear (340-7777)
Brown/Dark (340-7746)
Brown/Clear (340-7711)
Blue/Clear (340-7755)
Blue/Dark (340-7747)
White (340-7722)



Dappen Dishes - Plastic. Signature
Bag/12 **\$6.95**
Green (311-0013)
Yellow (311-0014)
Blue (311-0015)
Red (311-0017)
Assorted (311-0019)
Box/1000 (202-4164) **\$41.95**



Dappen Dishes - Silicone. Signature
Flexible silicone dish.
Small (340-0001) **\$2.95**
Medium (340-0002) **\$3.95**
Large (340-0003) **\$4.95**



Dental Floss
200 yards. **\$2.99**
Waxed (200-2328)
Unwaxed (200-9216)
Mint Waxed (200-3934)
Mint Unwaxed (200-3935)



Dental Floss. Super Dent
12 yards, Case/144. **\$39.95**
Mint Waxed (878-0254)



Chlorhexidine
(878-0250) 0.12% Chlorhexidine Gluconate
Alcohol Free, Net WT 16 oz (473 ml)
1-11 **\$7.99**
12-up **\$5.99**
100-up **\$4.99**



Fluoride Oral Rinse
2% Neutral Sodium Rinse.
1-4 **\$17.95**
5-up **\$16.95**
Spearmint (333-5603)
Fruit Punch (333-5604)



Fluoride Foam
7.4 oz. 60 secs. **\$17.95**
1-4 **\$16.95**
5-up
Strawberry (201-9350)
Bubble Gum (201-1102)



Topical APF - Fluoride Gel
A topical APF anticavities preparation for dental use. Optimized low PH for a complete treatment in 60 seconds. Bottle of 16 oz.
1-5 **\$10.95**
6-up **\$9.95**
Strawberry (300-9916)
Bubble Gum (300-9016)



Fluoride Gel Trays
Double trays. Can be sterilized in cold sterilization. Each size with its own color. Bag of 100 trays of the same size.
1-3 **\$27.95**
4-up **\$24.95**
Small (311-0111)
Medium (311-0222)
Large (311-0333)



Listerine
Gallon refill with pump. 2 per case.
1-5 **\$59.95**
6-up **\$54.95**
Cool Mint (421-8850)
Original (421-2240)



MI Paste Plus
(333-8426) Assortment 40 gm tubes. Box/10,
2 of each flavor (Melon, Mint, Strawberry, Tutti
Frutti & Vanilla). **\$143.95**



Pit & Fissure Sealant Syringes. Signature
(000-1004) 4-1 gm Syringes. **\$29.95**



LATEX Free

Prophy Angles
Original green web. Same as Denticator.
Box/144. **\$77.99**
Firm (877-8868)
Soft (877-1204)
Box/500 **\$245.99**
Firm (877-8568)
Soft (877-8503)

LATEX Free



Prophy Angles. Sultan
Box/1200 **\$539.95**
Firm (877-1208)
Soft (877-1206)
Box/100 **\$49.95**
Firm (877-1207)
Soft (877-1205)

LATEX Free



Disposable Prophy Angles. PacDent
Box/144 **\$49.95**
Firm (207-9748)
Soft (207-6634)
Box/500 **\$189.99**
Firm (207-4609)
Soft (207-0612)

LATEX Free



Disposable Prophy Angles. Signature
Box/144 **\$39.99**
Firm (237-3555)
Soft (237-5674)
Box/500 **\$149.99**
Firm (237-2489)
Soft (237-1309)



Prophy Angles

Snap on (752-8050)
Screw on (752-8060)

\$19.95
\$19.95



Prophy Cups. Signature

Prophy cup.
Box/144
Screw on (340-5144)
Snap on (340-9150)
Latch Type RA (340-1144)

\$19.95
\$19.95
\$29.95



Prophy Brush Latch Type.

Box/200 (340-0200)
Box/144 (340-0144)

\$39.95
\$34.90

Prophy Paste. Signature

Medium Coarse. Jar/12 oz
Mint (301-8891)

\$9.95



Prophy Paste. Qartz

Box/200
Assorted (207-3310)
Fine Assorted (207-1393)
Medium Assorted (207-2265)
1-3
4-up

\$21.95
\$19.95



Prophy Paste. Sultan

Box/200. With fluoride. Medium grit
1-3
4-up
Mint (971-0042)
Cherry (971-0043)

\$44.95
\$39.95

Caries Indicator

(202-8155) Red (202-4453) Green

\$29.95



Piezo Scaler (333-0001)

\$499.99

Scaler - Air Operated Scaler. Signature

Autoclaved, all tips and body. Clog free controlled water spray system. Gentle to the patient yet powerful to remove deposits, stains and calculus. Permits scaling in tight areas. Balanced and slim profile. Economically priced. Included 3 scaler points. 1 year warranty

\$299.95

2 Holes (340-3333)
4 Holes (340-4444)



Bonart Scaler

Ultrasonic Scaler. Free tip included!
25 K (202-9217)
30 K (202-9218)

\$499.95

P-10



P-100



IF-50



IF-100



IF-5



Cavitron Tips. Signature

1-3 \$59.95
4-up \$49.95
P-10 25KHz (202-9230) P-10 30KHz (202-9231)
P-100 25KHz (202-9232) P-100 30KHz (202-9233)
IF-50 25KHz (202-9234) IF-50 30KHz (202-9235)
IF-100 25KHz (202-9236) IF-100 30KHz (202-9237)
IF-5 25KHz (202-9238) IF-5 30KHz (202-9239)



Hemostatic Solution. Signature
Buffered aluminium chloride. 30 cc bottle
(492-0032) **\$24.95**



Gingi-Pak
Z-Twist Weave. 72" per bottle **\$11.99**
4-up **\$10.99**

With Epinephrine
#00 (974-5211)
#1 (974-3338)
#2 (974-3774)
#3 (974-4603)

Plain
#00 (974-2261)
#1 (974-2720)
#2 (974-3217)
#3 (974-3549)



Traxodent
Hemodent Paste Retraction Material.
Contains: 7 syringes and 15 applicator tips.
(452-5420) **\$94.95**



PAPAYA PLUS

New Concept/Multi-functional
Imaging System

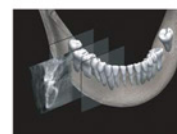
**0% DOWN PAYMENT
NO PAYMENTS
FOR 3 MONTHS**



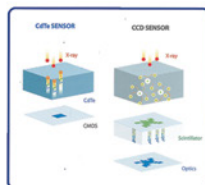
PANORAMIC



CEPHALOMETRIC



TOMOGRAPHY



By choosing a CdTe sensor, which improves the image quality while keeping radiation exposure to a minimum, Genoray has shown that it puts patient safety first.

The CdTe (Cadmium Telluride) sensor overcomes the limitations of a CMOS sensor to always produce high quality images.



**Includes PC with
Pre-installed Software**

RETRACTION MATERIAL



Bite Wing Tabs
(386-0500) Pressure - No peel. Convenient dispenser. Box eliminates individual peeling of tabs. Multipurpose, fits any film.
 Box/500. Flow-X.

1-5	\$6.95
6-up	\$5.95



Bite Block Covers. Palmero
(234-6583) Box/1000 **\$29.95**



Chair Side Darkroom. Signature
(268-1888) Completely portable!!!
\$139.95



Kodak Film

DF 42 (333-0034)	\$117.98
DF 50 (211-1267)	\$73.95
DF 58 (356-0158)	\$57.95
DF 57 (356-0157)	\$71.95
DF 54 (356-0156)	\$48.95



X-Ray Sensor Sheaths for Kodak 6100 TIDI Products
 Disposable X-ray sensor sheaths designed specifically for the Kodak 6100. Soft, latex free plastic provides patient comfort and sanitary coverage.

Size 0 (333-0198) Box/100	\$19.99
5 boxes (case)	\$19.49
Size 1 (333-0199) Box/100	\$19.99
5 boxes (case)	\$19.49
Size 2 (333-0200) Box/100	\$20.99
5 boxes (case)	\$20.49



Sensor Sleeves
 Box/500 (201-7500) **\$14.95**



Maxi-Gard Barrier Envelopes
 For use with phosphor plates to take digital X-rays. Prevents cross-contamination and protects plates from blood and saliva.
 Box/100.

Size 0 (333-0203)	\$12.99
Size 1 (333-0204)	\$12.99
Size 2 (333-0205)	\$36.99



Flow Dental X-Film

#54 (356-0154) Box/100	\$41.95
#57 (356-0153) Box/150	\$63.95
#58 (356-0155) Box/100	\$47.95



Medical X-Ray Film
 Green or Blue. Box/100.

14" x 17" (000-1417)	\$199.95
10" x 12" (000-1012)	\$119.95
8" x 10" (000-0810)	\$99.95



Panoramic Film Kodak
 Box/50. Other sizes available. Just call!!

TMG 15 15x30 (211-1862)	\$99.95
TMG 5 5x12 (211-2889)	\$89.95
XDBF 76 15x30 (211-0278)	\$109.95
XDBF 75 5x12 (211-8466)	\$104.95
Dup 5x12 (211-3147)	\$119.95



Panoramic Film. Signature
 Same as Kodak.

Box/100. 1-2	\$99.95
3-4	\$89.95
5-up	\$79.95

Use this chart to match the Kodak film you are currently using with the Signature equivalent.

Kodak: EKV5, TMG5	Signature: RMG5 Green 5x12 (445-1200)
Kodak: EKV15, TMG15	Signature: RMG15 Green 15x30 (445-1201)
Kodak: XDBF75	Signature: RXB75 Blue 5 x 12 (445-1203)
	Signature: XDBF76 Blue 15x30 (445-1204)



Cephalometric Film. Signature
 Box/100. 8 x 10

RMG Green (211-4508)	\$139.95
RXB Blue (211-8135)	



Duplicating Film. Signature
 Box/100

5 x 12 (332-0020)	\$99.95
15 x 30 (332-1530)	\$109.95
8 x 10 (332-0810)	\$114.95



Processing Liquids - Automatic A & B (211-5178) Premixed, ready to use automatic processing solutions designed for use in all brands of roller-type processors.

1- 3	\$44.95
4-up	\$39.95



Readymatic. Kodak
(356-0169) Ready to use. For use in all automatic dental processors. Fixer & Developer **\$64.95**



Processing Liquids - Peri-Pro Mix
(201-7275) Premixed for rollerless. Type processors. 3 qt each.
 1-3 **\$24.95**
 4 & up **\$23.95**



Processing Liquids - Manual A & B
(971-0026) Signature. Concentrated Solution for manual hand tank. 1 qt. each.
 1-5 **\$14.95**
 6-up **\$13.99**

Processing Cleaners STC. Signature
 Roller transport cleaning liquids.
 1 liter bottle. Liquid, 2 bottles p/ box
(201-4643) \$59.99










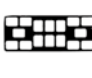



Universal Film Mounts
(971-0020) Perforated, non glare. Vinyl.
 Box/1000. 1-3 **\$49.95**
 4 & up **\$48.95**



Edge-Ease
(333-0065) Small, White. Adheres to all traditional film, phosphor plates and digital sensor barrier sleeves. **\$43.95**

Rinn Cardboard Film Mounts



	1H #0 (200-1010) \$18.95 1H #2 (200-1011) \$18.95
	2H #0 (200-1012) \$17.95 2H #2 (200-1013) \$22.95 2H #3 (200-1014) \$21.95
	8H #2 (200-1015) \$53.95 6V #2 (200-1016) \$26.95 4H #2 (200-1017) \$33.95
	4H #2 (200-1018) \$27.95
	6H #2 (200-1019) \$27.95
	4H 2V #2 (200-1020) \$32.95
	8H #2 (200-1021) \$44.95
	8H #0 (200-1022) \$55.95 6V #0 (200-1023) \$51.95
	8H #2 (200-1024) \$49.95 6V#2 (200-1025) \$74.95 2BW #3 (200-1026) \$48.95
	8H #2 (200-1025) \$74.95 6V#2 (200-1026) \$48.95
	10BW #2 (200-1026) \$48.95

Used Processors
 Full line of used processors. Call for price



X-Ray Aprons
 All colors. Adult **(200-0989) \$79.95**
 All colors. Child **(200-0990) \$69.95**
 Adult with collar **(200-2528) \$99.95**
 Child with collar **(234-2898) \$99.95**



X-Ray Film Hanger - Stainless Steel
 Box/100
 1 clip **(047-4001) \$4.95**
 4 clips **(047-4004) \$6.95**
 6 clips **(047-4006) \$8.95**
 10 clips **(047-4010) \$12.95**
 14 clips **(373-0014) \$24.95**



X-Ray Film Holders
 Can be chemically sterilized.
 Box/3. **\$12.95**
 White **(221-1420)**
 Blue **(221-1422)**
 Cream **(221-1423)**



X-Ray Positioning Kit RAPD
(201-0032) \$69.95
 Can be used for anterior, posterior and bitewing exams. Color-coded parts for easy assembly. Contains: 6 Aiming Rings; 1 Endo, 1 Bite Wing, 2 Anterior, 2 Posterior. 6 Indicator Arms; 1 Endo, 1 Bite Wing, 2 Anterior, 2 posterior. 24 Bite Blocks; 4 Endo, 4 Bite Wing, 6 Anterior, 10 Posterior



Aiming Ring
 Anterior & Bite Wing **(878-0088) \$5.95**
 Posterior **(878-0089) \$5.95**
 Anterior Arm **(878-0090) \$21.95**
 Posterior Arm **(878-0091) \$21.95**
 Bite Wing Arm **(878-0092) \$21.95**



Bite-Blocks
 Box/25 **\$18.99**
 Anterior **(878-0093)** Posterior **(878-0094)**



Bite Wing Bite Blocks
 Box/6 **\$8.49**
 #0/1 Horizontal **(878-0095)**
 #2 Horizontal **(878-0096)**
 #3 Horizontal **(878-0097)**



Bite Wing Blocks
 Box/6 **\$17.99**
 #2 Vertical **(878-0098)**



Sensible Bite Wing Bite Blocks
 Box/4
 Medium **(000-0000) \$17.99**
 Large **(000-0000) \$17.99**

A

Acid Etching Gel.....19
Acrylic & Relines.....4
 Acrylic Stones.....53
 AH 26.....26
 AH Plus.....26
 Aiming Ring.....61
 Airwater Syringe Tips.....24
 Alcohol Torch.....53
 Alginate.....40
 Alginate Tray Cleaner.....42
 Alginate/VPS Tray Adhesive.....42
Alloys.....5
 Aluminium Oxide.....53
 Amalgam Carriers.....5/46
 Amalgam Condenser.....46
 Amalgam Squeeze Cloths.....5
Anesthetics.....6-7
 Aquasil Ultra.....40
Articulating.....8
 Articulating Paper.....8
 Articulating Paper Holder.....8/46
 Articulating Paper Horseshoe.....8
 Articulators.....53
 Aspirating Syringe.....6/46
 Autoclave.....30

B

Bathroom Tissue.....24
 Base Former.....53
 Base Plates.....53
 Bibs.....23
 Bib Clips.....23
 Bite Block.....25/61
 Bite Block Covers.....60
 Bite Block Wax Forming.....53
 Bite Registration Cartridges.....41
 Bite Registration Trays.....42
 Bite Wing Bite Blocks.....61
 Bite Wing Blocks.....61
 Bite Wing Tabs.....60
 Birex Biotrol.....43
 Bouffant Caps.....43
 Bone File.....46
 Brixton Syringe Sleeves.....24/43
 Brush Tips & Handles.....19
 Bunsen Burner.....53
 Burley Arbor.....53
Burs.....9-14
 Bur Block Magnetic.....14
 Bur Cleaning Brush.....14/46
 Bur Holder.....14
 Burnishers.....46
 Butane Lab Burner.....53
 Butane Micro Torch.....53

C

Calcium Hydroxide (USP).....26
 Carbocaine 3%.....6
 Canisters.....25
 Caries Indicator.....57
 Carvers.....46
 CaviCide.....44
 Cavit-G.....17/28
 Cavitron Tips.....58

Cem Tips.....17
 Cement Syringe Paste.....17
Cements & Liners.....15-18
 Cephalometric Film.....60
 Cetacaine Topical.....7
 C-Fold Towels.....23
 Chair Packages & Acc.....32-33
 Chair Side Darkroom.....60
 Charisma.....19
 Chlorhexidine.....57
 Chuck #200.....53
 Clear Celluloid Strip.....19
 Clear Crowns Forms.....22
 Clearfil SE Bond.....20
 Cleoid Discoid.....46
 Coecide XL.....44
 Coe-Flex.....40
 Coe-Pak.....26
 Coe-Soft.....4
 Coe Tray Cleaner.....42
 Cold-Cure.....4
 Composite Instruments.....47
 Composite Restor. Material.....21
 Compressors.....31
 Compule Dispensing Gun.....21
 Copal Varnish & Solvent.....15
 Core Buildup Material.....18
Cosmetics & Bonding.....19-21
 Cotton Pliers.....47
 Cotton Roll.....23
 Cotton Roll Dispenser.....23
 Cotton Roll Holder.....23
 Cotton Tip Applicators.....23
Crown Forms.....22
 Crown Removers.....47
 Cryer.....47
 CSR Wraps.....43
 Cups.....23
 Curing Light.....30
 Currettes.....47

D

Dappen Dishes.....56
 Dental Floss.....57
 Dentinal Retention Pin.....26
 Dentstone.....53
 Denture Boxes.....23
 Denture Flask.....53
 Diamond Polishing Paste.....19/36
 Dimension Penta H.....41
 Dispersalloy Amalgam.....5
Disposable.....23-25
 Disposable Brush Applicators.....19
 Disposable Extension Tubes.....7
 Disposable Impression Syringe.....40
 Disposable Impression Trays.....42
 Disposable Scalpel.....51
 Dispos-a-trap.....52
 Dowel Pins.....53
 Dri-Angles.....23
 Dry Socket Paste.....26
 Duplicating Film.....60
 Duplicating Material.....53
 Duration SE Bond.....20
 Durelon.....15
 Dycal.....15
 Dynamic Desensitizer.....15

E

Edge-Ease.....61
 EDTA Solution.....28
 Electric Micro-Motor.....54
 Elevators.....47-48
 Endo-Ice.....26
 Endo Rulers.....26
 Endo Stops.....26
Endodontics.....26-29
 Enhance Finishing.....36
Equipment.....30-34
 Eugenol (USP).....18/26
Evacuation.....35
 Evacuator System Cleaner.....35
 Evacuator Tips.....23/35
 Exabite II NDS.....41
 Exafast NDS.....40
 Examix NDS.....40
 Excavators.....48
 Explorers.....48
 Express.....41

F

Face Shield.....45
 Fast Tooth Acrylic.....4
 Felt Cones.....54
 Felt Wheels.....54
 Filling Instruments.....48
 Finger Cots.....24
Finishing.....36
 Finishing Stones.....36
 Fit Checker.....8
 Flexi Post.....26
 Flexibowls.....54
 Flow Dental X-Film.....60
 Flowable Composite.....20
 Fluoride Foam.....57
 Fluoride Gel.....57
 Fluoride Gel Trays.....57
 Fluoride Oral Rinse.....57
 Forceps.....48-49
 Fox Plane.....54
 Fuji I.....16
 Fuji II Kit.....16
 Fuji II LC.....16
 Fuji IX A2.....16
 FujiCEM Automix.....16
 Fuji Plus.....16
 Full Chair Covers.....24/43
 Fynal.....15

G

Gates Glidden.....27
 Gauges.....49
 Gauze.....24
 Gauze Dispenser.....23
 G-Bond.....19
 G-Cem Self Adh. Lut. Cement.....17
 GC Metal Strips.....17
 Genie VPS.....41
 Germicide Sterilizer.....44
 Germicide Trays.....44
 Gingi-Pak.....59
 Glass Ionomer Cement.....16
 Glasses.....44

Gloves.....44
 Gluma.....15
 Gluma Comfort & Desens.....20
 Gowns.....44
 Gutta Percha Points.....26

H

Half Chair Covers.....24/43
 Handpiece Sleeves.....24/43
Handpieces.....37-39
 Handpiece Adapters & Acc.....39
 Handpiece Flush Adapter.....39
 Harvey Vapo-Sterlie.....44
 Headrest Covers.....24/43
 Headstrom Files.....27
 Heat-Cure.....4
 Hemostatic Solution.....59
 Herculite.....21
 High Performance Tips.....40
 HVE Screens.....35
 Hybrid Light Cure Composite.....21
 Hygoformic Saliva Ejectors.....35

I

i-Bond Self Etch.....20
 Impregum.....41
 Implant Motors.....31
 Impression Gun.....4/40
Impression Material.....40-42
Infection Control.....43
 Infectious Waste Collec. Bags.....45
Instruments.....46-52
 Instrument Mat.....49
 Intermediate Restor. Material.....18
 Intra Oral Mixing Tips.....40
 IRM.....17
 IRM Caps.....17
 Irrigating Needle Tips.....27
 Irrigating Syringe.....27
 Iso-Form Temporary Crowns.....22

J

Jeltrate Plus.....40

K

Kavo Spray.....39
 Ketac Cement.....16
 Ketac Silver Applicap.....16
 K-File.....27
 Kleenex Facial Tissue.....24
 Knives.....51
 Kodak Film.....60
 Kromatica.....40

L

Lab Coats.....44
 Lab Jackets.....44
 Lab Plaster.....53
 Lab Trays.....54
 Laboratory Brushes.....54
Laboratory Products.....53-56

Lathe Full Side.....54
 Lidocaine 2%.....6
 Light Cure Orthodontic Adhes..21
 Lime-Lite.....15
 Lingual Bar.....54
 Listerine57
 Lubricating Spray.....39
 Lucas.....47
 Luer Lock Irrigation Syringe.....27
 Luxatemp Gun4
 Luxatemp Plus4
 Luxatemp Plus Mixing Tips.....4

M

Magic Brushes.....19
 Mandrels.....54
 Marcaine HCl 0.5%.....6
 Masks.....45
 Matrix Band Rolls.....49
 Matrix Band Tofflemire.....49
 Matrix Retainers.....49
 Maxi-Gard Barrier Envelopes...60
 Medical X-Ray Film.....60
 Medicon Saliva Ejectors.....35
 Mesh Bur & Diamond Holder....14
 Metered Spray.....7
 MI Paste Plus.....57
 Microbrush Applicators.....19
 Miracle Mix.....17
 Mirrors.....49-50
 Mixing Pads Poly.....18
 Mixing Spatulas for Composite..21
 Mixing Tips.....4
 Mixing Wells.....15
 Mizzy Pressure Indicator Paste...8
 Model Trimmer.....54
 Model Trimmer Wheel.....54
 Monojet 412 Utility Syringe.....40
 Monojet Endo Syringe.....27
 Mounted Stones.....54
 Mouth Gags.....50
 Mouth Prop.....50
 Mouth Wider.....50
 Muslin Buffs.....54

N

Needle Holders.....50
 Needles Sterilized.....6
 Nichro Stainless Steel Crowns..22
 Nitrile Gloves.....44

O

Occlude-Pascal.....8
 Optibond.....20
 Orange Solvent.....18
 Orthodontic Resin Bonding.....20

P

Packing Instrument.....46
 Panoramic Film.....60
 Paper Points Sterilized.....27
 ParaPost.....29

Paste Filler.....27
 Peeso Reamers.....27
 Penta Mixing Tips.....40
 Periodontal Pocket Probers.....50
 Permadyne42
 Pit & Fissure Sealant Syringe...57
 Placers.....48
 Plaster Nipper.....50
 Plastic Cheek Retractor.....50
 Plastic Pins.....28
 Pliers.....50
 Pluggers.....50
 Polycarboxylate Cement.....15
 Polishing Strips.....17/36
 Polycarbonate Temp. Crowns..22
 Porcelain Polishing Kit.....36
 Portable Units.....30
 Post System Kit.....28
 Pre-bent Needles Etch Tips.....19
 Premium Goggle.....44
 Pressure Indicator Paste.....8
 Pressure Indicator Paste Brushes.8
Preventives57-58
 Prime & Bond NT.....20
 Prisma Gloss.....19/36
 Processing Liquids.....60-61
 Processing Cleaners STC.....60
 Processors.....61
 Prompt L-Pop.....20
 Prophy Angles.....57-58
 Prophy Brush.....57
 Prophy Cups.....57
 Prophy Paste.....57
 Protectop 28.....44
 Pumice.....55

R

RC Prep.....28
 Readymatic Kodak.....60
 Reamers.....28
 Regisil 2x.....41
 Rely X Automix.....16
 Rely X Intro.....16
 Rely X Luting Plus.....16
 Rely X Unicem.....16
 Rely X Unicem 2.....16
 Retainer Boxes.....23
Retractable Material59
 Revotek LC.....7
 Rinn Cardboard Film Mounts...60
 Roll Towels.....24
 Rongeurs50
 Rouge.....55
 Rubber Dam.....28
 Rubber Dam Forceps.....51
 Rubber Dam Clamp.....51
 Rubber Dam Frames.....51
 Rubber Dam Punches.....51
 Rubber Wheels & Points.....55

S

Safe Tips.....24
 Saliva Ejectors Screens.....35
 Sani Cloth Plus.....35
 Sani Tips.....24
 S-Bond Plus.....20

Scalers51/58
 Scissors.....49/52
 Scotchbond.....20
 Screw Post.....28
 Sealapex28
 Seal-G17/28
 Self-Seal Autoclave Bags.....45
 Sensor Sleeves.....43/60
 Separating Medium.....55
 Septocaine 4%.....6
 Series Dental Cabinets.....34
 Set-Up Trays.....51
 Sharp Containers.....6
 Shofu Abrasives.....36
 Signature-Line.....4
 Signature-Temp.....4
 Silicone Color Code Rings.....26
 Single Bond.....20
 Sodium Hypochlorite.....29
 Sof-Lex.....36
 Sof-Lex Finishing Strips.....17
 Solo Evacuator Cups.....23
 SonicTAB.....45
 Spacer Trays.....42
 Spatulas.....51/55
 Spherodon.....5
 Spring Compress.....55
 Sterilization Pouches.....45
 Sterilization Tubing.....45
 Sterilizer Indicator Tape.....45
 Stone Chuck.....55
 Strainers25
 Superflex.....40
 Superoxol.....29
 Sure Tip Colors.....24
 Surgical Blades.....51-52
 Surgical Tips.....24/35
 Surgifoam7/26
 Sutures29
 Syringe Etch Gel.....19
 Syringe Sleeves.....24/43

T

Tapered Spindle.....55
 Tartar & Stain Remover.....44
 Temp Bond.....17-18
 Temporary Stopping.....29
 Three-Way Syringe Tips.....35
 Tissue Conditioner.....4
 Tongue Depressors.....24/52
 Tooth Acrylic.....4
 Topex Metered Spray.....6
 Topex Topical.....7
 Topical Anesthetic Gel.....7
 Topical Anesthetic Spray.....7
 Topical APF.....57
 TPH321
 T-Style Sleeves.....43
 Traps.....25
 Traxodent.....59
 Tray Covers.....43
 Tray Sleeves.....24/43
 Trays42
 Triple Syringe.....52
 Triple Trays.....42
 Tubli-Seal29

U

Universal Barrier Film.....43
 Universal Film Mount.....61
 Utility Syringe Curved.....40

V

Vacuum.....31
 Vacuum Forming Machine.....55
 Vinyl Polysiloxane.....41
 Vibrator55
 Vitrebond Kit.....18
 Vitrebond Plus.....18

W

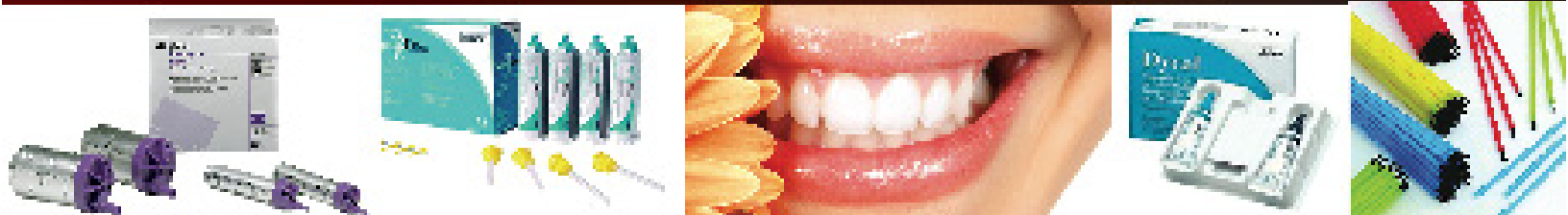
Wax - Bite Blocks Occ. Rims.....56
 Wax - Pink Waxes.....56
 Wax - Sticky Wax.....56
 Wax - Utility Wax.....55
 Wax Heater.....55
 Wax Instruments.....52
 Weltex.....44
 Whitening System.....19
 Wood Wedges.....23

X

X-Ray.....31
 X-Ray Aprons.....61
 X-Ray Film Hanger.....61
 X-Ray Film Holders.....61
 X-Ray Positioning Kit RAPD....61
X-Ray Products.....60-61
 X-Ray Sensor Sheaths.....60
 X-Ray Sleeves.....43
 X-Safe Jackets.....44

Z

Z 100.....21
 Z 250.....21
 Zinc Oxide (USP).....18/29
 Zinc Phosphate Cement.....18
 Zoe B&T.....17



DENTSPLY
PROFESSIONAL
DENTAL

Kerr
DENTAL

KURARAY
DENTAL

3M ESPE