

Fast Ethernet In-band media converter

FMC-10/100i



The FMC-10/100i family are 10/100Base Ethernet to 100Base-FX fiber stand-alone converters designed for fiber connection to FRM220-10/100i card in a managed FRM220-CH20 chassis. With advanced features like bandwidth control, this media converter is targeted for customer premises equipment in metro LAN, campus, enterprise and FTTx applications. By offering in-band management, this converter can be completely controlled and monitored from a centrally located managed rack controlling all converter settings including band-width control, duplex, and speed configuration. This media converter is completely transparent to Layer 2 and Layer 3 protocols including IEEE 802.1q, VLAN tag, Q in Q, STP, IPX, IP, etc.

Features

- 10/100Base-TX to 100Base-FX Converter
- Auto-Negotiation or forced mode
- Auto MDI/MDIX
- Forward 2046 bytes (Max.) packets in switch mode
- Forward 9K jumbo packets in converter mode
- Supports Q in Q double tagged frame transparent
- Supports IEEE 802.1q Tag VLAN pass thru
- Supports local / remote In-band management (Monitor and Configure) by the SNMP manager with FRM220-10/100i.
- Bandwidth control (Nx32K or Nx512Kbps)
- Support flow control (Pause)
- Supports remote CPE power fail detect (dying gasp)
- Supports Far End Fault
- Supports Link Fault Pass through (LFP)
- Supports Loop Back Test
- Supports RMON counter
- D/D function for supported SFP fiber transceiver
- Auto Laser Shutdown (ALS)
- Fiber Hardware Reset (FHR)
- Online local / remote f/w upgrade
- Supports 802.3af Power over Ethernet (only FMC-10/100IP)

Optical Interface

Connector	1x9 (SC, ST, FC), SFP LC
Data rate	100Mbps
Duplex mode	Full duplex
Cable type	MM 62.2/125µm, 50/125µm, SM 9/125µm
Distance	MM 2km, SM 15/30/50/80/120km, WDM 20/40/60/80km
Wavelength	1310, 1550nm

Electrical Interface

Connector	RJ45
Data rate	10Mbps, 100Mbps
Duplex mode	Half / Full duplex
Cable type	10Base-T Cat.3, 4, 5, UTP, 100Base-TX Cat.5, 5e,
Distance	100 meters

Standard

IEEE 802.3, IEEE 802.3u, IEEE802.3ab
Power, FX Link, TX SPD, TX Link, TX Duplex, FEF
DC 12V In

LEDs

Power

Power Consumption

< 4W

Dimensions

108 x 74 x 23mm (D x W x H)

Weight

120g

Temperature

0 ~ 50°C (Operating), -10~70°C (Storage)

Humidity

10~90% non-condensing

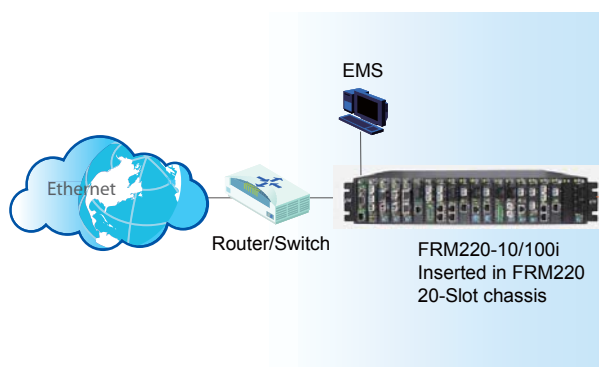
Certification

CE, FCC, RoHS

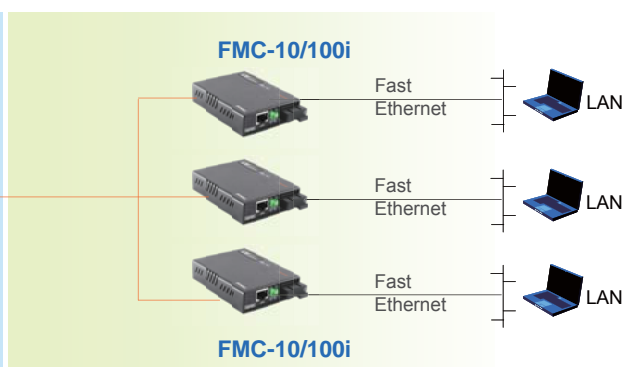
MTBF

65,000 h (25°C)

Central Office (CO)



Customer Premise Equipment (CPE)



Ordering Information

FMC-10/100i: 10/100Base-TX to 100Base-FX w/ In-band Management

FMC-10/100iS: 10/100Base-TX to 100Base-FX SFP w/ In-band Management

FMC-10/100iP: 10/100Base-TX to 100Base-FX w/ In-band Management & Power over Ethernet

FMC-10/100iPS: 10/100Base-TX to 100Base-FX SFP w/ In-band Management & Power over Ethernet

Smart View Element Management System (EMS)

Example: SV-PLF-05(5/ 25/ 50), SV-AGT-50(50/ 100/ 200/ 500), SV-Fiber

(Platform server: 5/ 25/ 50 Client user admission+

50/ 100/ 200/ 500 Device Agents + FRM220 Managed Module)