

L2 Gigabit Carrier Ethernet



MSW-4424A

- 24x 100/1000Mbps SFP slots + 4x 10G/1Gbps SFP+ slots
- Hot swappable power and FAN module

MSW-4424C

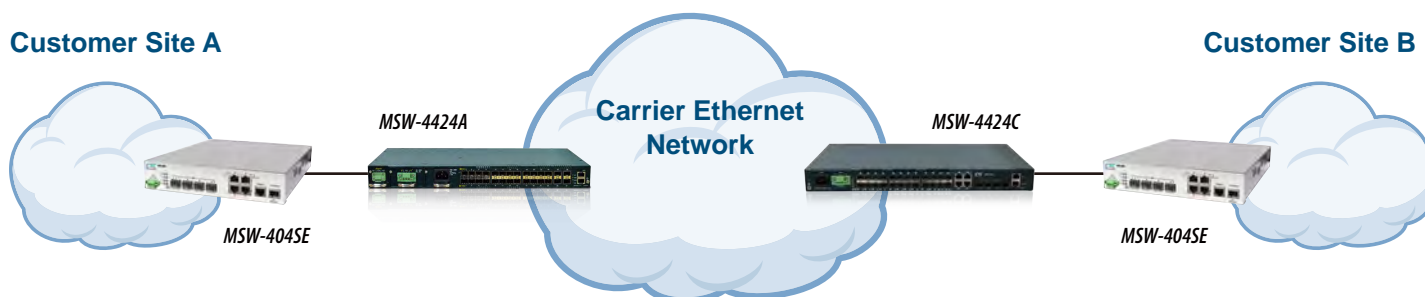
- 20x 100/1000Mbps SFP slots + 4x GbE combo ports + 4x 10G/1Gbps SFP+ slots
- Power and Fan module built-in



Features

- CE 2.0 standard compliant (E-Line/E-LAN/E-Tree service)
- IEEE 802.3ah / IEEE802.1ag / ITU-T Y.1731 Ethernet OAM
- ITU-T G.8032 Ethernet ring protection
- IPv6 support

Business Connection Service



FTTx Application

